



newsletter

JULY
2024
ISSUE

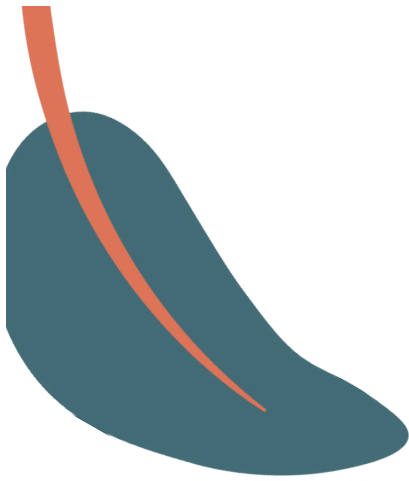
MENTAL HEALTH
IN DESIGN AND FOR
DESIGNERS

MEET-A-MEMBER
**RICHARD
RAMIREZ**

UPCOMING
EVENTS
AND MORE



ASLA
NEVADA



UPCOMING EVENTS

Las Vegas, Nevada



EXERPLAY LUNCH & LEARN

1 CEU/PDH

Wednesday, July 31, 2024

12:00 PM - 1:00 PM

Location: Virtual

WYNN GARDEN TOUR

Saturday, August 10, 2024

7:00 AM - 09:30 AM

Wynn: 3131 Las Vegas Boulevard South
Las Vegas, NV 89109

GREEN VALUES STORMWATER

CALCULATOR

1 CEU/PDH

Tuesday, August 20, 2024

12:00 PM

Virtual

INCLUSIVE PLAY MATTERS

1 CEU/PDH

Thursday, August 29, 2024

5:30 PM - 7:00 PM

Location: Top Bar Restaurant
6160 W Tropicana Ave E8, Las Vegas, NV 89103

GOLF TOURNAMENT

Friday, September 13, 2024

12:00 PM - 6:30 PM

Boulder Creek Golf Club

1501 Veterans Memorial Drive Boulder City, NV,
89005 United States

For more information: wayne@jwzunino.com

PARK-(ING) DAY

Friday, September 20, 2024

4:00 PM - 8:00 PM

4205 Spring Mountain Rd, Las Vegas, NV 89102

ASLA CONFERENCE

From Sunday, October 06, 2024
to Wednesday, October 09, 2024
Washington D.C.

GPH LUNCH & LEARN

Friday, October 18, 2024

11:30 AM - 1:00 PM

Location: TBA

PARKPRO PLAYGROUNDS TOUR

Saturday, October 19, 2024

Time: TBA

Ice Age Fossils State Park

8660 N Decatur Blvd, North Las Vegas, NV 89085



nvasla.com



UPCOMING EVENTS

Reno, Nevada

BRIGHTVIEW - LUNCH & LEARN

**We're excited
to announce
the highly
anticipated
Bright View
Lunch coming
this Fall 2024!**

Enjoy delicious food, refreshing drinks, and a breathtaking view of the autumn foliage. It's the perfect opportunity to meet new people, network with industry professionals, and have a great time.

#BrightViewLunchParty #Fall2024
#NetworkingEvent #Foodie #JoinTheFun



nvasla.com

President's Message



MICHAEL HERNANDEZ
PRESIDENT

Have you designed something recently?

Beyond the requirements and challenges of a project, the excitement of design can end abruptly. It can seem like the rush of the design process ends and leaves you with an emotional gap. This often blocks your creativity for the next project you must begin.

If you have not experienced this, consider yourself lucky. For others, there are solutions to bridge the emotional gap in the design process, especially if multiple projects are within the same phase. Focus on making a recovery plan, and analyzing what helps you recover sustainably so that the next design does not feel like a struggle.

Design takes a lot of mental power and if you do not recharge, it can affect you.

"Design is for me a frame of mind, a habit of looking for opportunities where others see problems and then of devising solutions that combine function, form, poetry, and justice."

Anne Whiston Spirn



It's Your World.

TAKE CONTROL

Introducing IQ4.

The future of central control.

- Real-time, full-remote access
- Diagnose and solve customer problems fast
- Advanced and simple ET capabilities



Learn about IQ4 and our full lineup of control solutions at rainbird.com/TakeControl-IQ4.

Questions? Contact Tiffany Haveron
435-720-3897 | thaveron@rainbird.com





ASLA
NEVADA

explore nvasla

Network, learn, and grow with NVASLA. Access exclusive resources, exciting events, and the chance to make a real impact in the field of landscape architecture.

#Joinustoday!

now open for the

NVASLA Executive Committee!

Are you ready to take your involvement with NVASLA to the next level? We're excited to announce that nominations are now open for the 2024-2025 NVASLA Executive Committee! This is your chance to be part of a dynamic team dedicated to shaping the future of landscape architecture in Nevada.

We have **five fantastic positions** up for grabs:



**President
Elect**



Secretary



Treasurer



Trustee



**Northern
Section
Chair**

Who can apply?

Whether you're a **seasoned professional or a new student, we welcome all enthusiastic and passionate members of our community to apply.** If you're committed to advancing the profession and ready to contribute your unique perspective, we want you on our team!

How to Nominate

Nomination is simple!

Just send an email to info@nvasla.com with:

- Your name
- The position you're interested in
- A brief statement about why you want to join the Executive Committee

JULY

MENTAL HEALTH IN DESIGN AND FOR DESIGNERS

"If we had a medicine that delivered as many benefits as parks, we would all be taking it. Parks deliver cardiovascular benefits, fight loneliness, combat osteoporosis, counter stress anxiety, and more. And they do those things without adverse side effects and at minimal costs." —D R. HOWARD FRUMKIN, Senior Vice President at Trust for Public Land and former dean of the University of Washington School of Public Health

The Dirt Uniting and Natural Environments
Urban Parks Should Be a Greater Part of the Healthcare System

[Read It Here](#)

The Power of Parks to Promote Health
A Special Report


[Read It Here](#)

Creative Burnout: Suffocating the Future of Design
A Detailed Analysis of the Effects of Creative Burnout Among Design Students and Professionals

[Read It Here](#)

"Design is not a linear, predictable process; it's a cycle of highs and lows. The joys are invigorating — when your design solves a complex problem or when the user experience is seamless. However, the lows, like critical feedback, revisions, or even failure, can be disheartening. This emotional roller coaster can take a toll on our mental health if we don't manage it properly." by Elizabeth Eagle-Simbeye

[Read It Here](#)

A close-up photograph of a pink flower with many thin, pointed petals, growing on a green stem. The background is a soft-focus green.

DISCOVER
NATURE'S
BEAUTY

LAS VEGAS BLOOMING GARDENS

JOIN US FOR A GARDEN TOUR

Saturday, August 10 •
7 - 9:30am PDT

Wynn

3131 Las Vegas Boulevard South
Las Vegas, NV 89109

[RSVP: Here](#)



Richard Ramirez

Senior Project Manager
Conceptual Design + Planning Company

What projects have you worked on bring you the most joy?

Over the course of my career, I was fortunate enough to work on some amazing projects ranging from Skateparks to housing and retail, but one particular project I enjoyed most was a senior living project in Oceanside California. This project opened another door to my career as this community showed me that seniors also enjoy their outdoor time and providing them with the proper amenities and space gave me the feeling of accomplishment.

Is there a type of project that you have not been part of that you would like to be?

I would like to get myself involved in more master planning projects. I feel with the growing population and the demand for more housing, we tend to forget what an outdoor space should feel like in a new community and end up creating the space after roads and buildings have been laid out. It would be great to see a community that is built around open space. Las Vegas has all the potential in my eyes.

As a member of NVALA, I would like to...

Share some of my knowledge and experiences with young up and coming professionals and provide mentorship and guidance. I feel that it's a great way in giving back as many have helped me get to where I am at today and sharing that experience would be an honor.

What aspect of Landscape Architecture interests you?

I've always been intrigued in seeing how an empty space comes to life. From the challenges to push the boundaries in creating a space that is unique and enjoyable to a space that is ever so memorable are what makes me enjoy what I do for a living. I continue to enjoy seeing the evolution of design grow with ideas that are sustainable, unmatched and adaptive to its location. It shows that we as Landscape Architects care about our environment and the people around us.

Do you have a role model that you look to for inspiration?

Ever since I started my path into Landscape Architecture, I had a project manager at my first job take me under his wing and show me the ropes in all aspects of design and management. He once told me "Its not just your company's name on it, its also your name as well", since that day he became a role model I always looked up to for guidance and inspiration to be a great leader. We still keep in touch and have become great friends.



Summer's *gathering* spot

exerplay

Ether Wong
725-226-6024
ether@exerplay.com

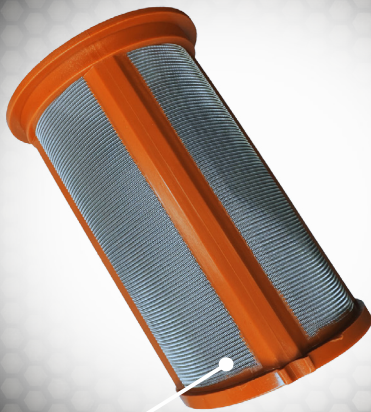
SLR
landscape
structures

Site Tour Month Call for Action

August is Site Tour Month and we are looking for designers to step up and give a tour of their projects to local officials if they are available.

See the 'how-to' booklet here:
<https://www.asla.org/sitetours/>

JARTOP BASKET FILTER



DIAGONAL MATRIX SCREEN™
Copper Infused Reinforced Frame
Pressure Activated Inlet Seal
Industries Largest Filtration Area



X-RING SEALED JARTOP CAP™

Reinforced Engineered
Grade Polymer

Threads Available in
3/4" or 1" NPT

PART NUMBERS
3/4" - GJT-075
1" - GJT-100



More Information



www.gphirrigation.com

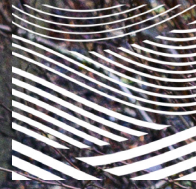


866.582.9684



MADE IN

THE USA



ASLA
NEVADA

**Learn how to manage stormwater using the
Green Values Stormwater Calculator**

Presented by: Phillip Zawarus

Tuesday, August 20th

Virtual Event - Zoom

At 12:00pm

RSVP here: [Eventbrite](#)

1 CEU | LU

FREE



KORNEGAY DESIGN®

Fine precast concrete amenities

a landscapeforms® company

Paseos Line LANDSCAPE PLANTERS & SEATING

Designed by ceramicist Claudia Issa, Paseos are public scale, cast concrete elements that capture a kinetic energy.



**Nevada
Sales
Agency**

Ed Forlani eforlani@nevadasalesagency.com

Jazmin Miller jmiller@nevadasalesagency.com

Kathy Wilson kwilson@nevadasalesagency.com

landscapeforms®

Join NVASLA's Climate Action Committee



Why should I join?

- (A) Promote Innovation
- (B) Scale the Issue
- (C) Voice our Concerns
- (D) Make a Difference

What is the current objective?

- (A) Establish goals
- (B) Foster initiatives
- (C) Review local regulations

What is my role?

- (A) Collaborate with other professionals
- (B) Review and comment on local documents
- (C) Advocate for change
- (D) Report to the Chair of the Committee



CLIMATE RESILIENCE – WE COMMIT TO ENHANCING CAPACITY, BIODIVERSITY, AND RESILIENCE OF LIVABLE CITIES AND COMMUNITIES

Goal 1: Practice - Scale Up Climate | Positive Approaches

- Objective 1: Expand ecological services to improve climate resilience
- Objective 2: Protect, conserve, and enhance biodiversity
- Objective 3: Incorporate ecologically-sound land management practices
- Objective 4: Support regenerative local agriculture and increase food security

Issue #1

Clark County's Title 30

Goal 2: Equity - Empower Communities Climate Agency | We commit to advocating for climate equity and social well-being

- Objective 1: Build community
- Objective 2: Understand climate injustices
- Objective 3: Utilize communication tools and techniques
- Objective 4: Share financial access guidance for communities



Goal 3: Advocacy- Build Coalitions Climate Leadership | We commit to galvanizing climate champions

- Objective 1: Engage the public
- Objective 2: Work with elected officials and public servants
- Objective 3: Support employee health and wellbeing
- Objective 4: Build climate coalitions
- Objective 5: Guide policies

Next Steps

- (1) Contact/Email **Barb** and **Anna**
- (2) Review CC's Title 30
- (3) Join a meeting
- (4) Provide comments and concerns
- (5) Brainstorm alternatives



trustee@nvasla.com | pastpres@nvasla.com

landscapeforms®

Every Day Chair

Making Every Day a Little Less Everyday

**N
S
A**

**Nevada
Sales
Agency**

Ed Forlani
eforlani@nevadasalesagency.com
702.468.9655

Jazmin Miller
jmiller@nevadasalesagency.com
702.343.7434

Kathy Wilson
kwilson@nevadasalesagency.com
702.371.5045

Inclusive Play Matters: Innovating Outdoor Play Destinations for People of All Ages and Abilities



August 29, 2024



5:30 - 7:00 PDT



**Top Bar Restaurant
6160 W Tropicana Ave E8
Las Vegas, NV 89103**



Speaker:

Jennie Sumrell
*CORE Community
Outreach Director*

CORE
Center for Outreach, Research & Education

In partnership:



Register:

education.playcore.com/p/inclusion-asla-nevada-2024

Be inspired to innovate high quality outdoor play experiences for people of all ages and abilities by aligning evidence-based design best practices to inclusive play destinations to encourage active, independent, and meaningful play for all. Both a physical and social event, inclusive play is not solely about physically accessing an environment, but what experiences happen once an individual gets there. Learn inclusive design principles that go beyond minimum accessibility and intentionally address the needs of the whole child.

1. Describe the difference between accessible design, universal design, and inclusive playground design.
2. Identify five design features or considerations that address the physical, social-emotional, sensory, cognitive, and communication needs of the whole child
3. List the 7 Principles of Inclusive Playground Design and at least three ways that these best practices intentionally create outdoor environments where physical and social inclusion can occur
4. Summarize the need, value, and importance of inclusive, multigenerational play environments to effectively advocate and fund community lead initiatives

How to Register

Step 1:

Log into your education.playcore.com account (if you haven't created an account yet, sign up before registering for the event).

Step 2:

Register for the event by clicking the link above or visiting the following page: <https://tinyurl.com/2d598hsu>

For questions about the session or CEUs, please contact the Center for Outreach, Research & Education at core@playcore.com

.1 IACET CEU / 1 AIA HSW LU / 1 LA CES HSW PDH

Less time collecting waste, more time keeping Pittsburgh beautiful.



VICTOR STANLEY RELAY™

STREET LEVEL SENSING™ & WASTE CONTROL SERVICE

Relay technology has helped make Pittsburgh an even better place to live. Sensor-equipped waste bins send the city real-time data, monitoring everything from fullness to street-level conditions. Now that crews can optimize their collection routes, a job that once required 25 people now only takes 9. Allowing workers to focus on other pressing tasks, including street repairs, cleaning up vacant lots, and improving street-level conditions in disadvantaged areas.

What can we do for your city?

Contact Gibbs LaMotte at gibbsl@victorstanley.com

VICTOR  STANLEY®



victorstanleyrelay.com



ASLA
NEVADA

GOLF TOURNAMENT

Friday, September 13th
Boulder Creek Golf Club, Boulder City
Check-in at 12pm
Shotgun starts at 1pm

Sign Up Form

Here

Custom is Standard

Tradition Redefined



**Call Rhetta
385 222 1030
To Learn More!**


Berliner
Play equipment for life

Silver State Award 2024



ASLA, as a professional organization in Nevada,

is proud of its impact on the community through environmentally sound, sustainable, and innovative landscape architectural planning and design. The Silver State Award is the highest honor the Nevada Chapter of the American Society of Landscape Architects (NVASLA) can bestow upon an individual. It is given in recognition of the most distinguished service to the profession of landscape architecture and/or a significant body of work having a lasting influence on the theory, practice, and advancement of the profession in Nevada.

A. Eligibility Requirements

Prospective candidates must comply with the below eligibility requirements.

- 1. Membership:** The prospective candidate shall be an NVASLA full member in good standing for 10 continuous years before nomination.
- 2. Knowledge Skills and Abilities:** The Qualified Candidate shall have demonstrated exceptional abilities in professional areas of practice, administration, management, education, and/or governance over the prior ten years.
- 3. Influence:** The Qualified Candidate shall have made a clearly positive impact on the profession and/or the state of landscape architecture in Nevada.

B. Sponsor

- 1.** Any NVASLA Member in good standing may sponsor another member for consideration of their qualifications to be a prospective candidate for award.
- 2.** The sponsor should determine the degree of interest on the part of a prospective candidate.
- 3.** Any NVASLA member in good standing may choose to act as their own sponsor for consideration of their qualifications to be a prospective candidate for the award.

C. Sponsorship Letter

The sponsorship/credential letter shall address all the eligibility requirements.

Illuminate the Night

Play Never has a Bedtime



**Call Rhetta
385 222 1030
To Learn More!**


Berliner
Play equipment for life



RainBird Lunch and Learn | Recap



We recently had a fantastic turnout for our Lunch and Learn with our awesome sponsor, Rainbird, and learned about their latest Central Control products. We deep-dived into the nuances of evapotranspiration and the importance of using sensor technology to help reduce ineffective irrigation techniques.

Thank you to Rainbird, Tiffany, and everyone who attended our Lunch and Learn.

thank you to all of our



ASLA
NEVADA

SPONSORS

PLATINUM



SILVER



GOLD



NORTHERN SECTION

landscapeforms®

IRONSMITH