



ADVANCING INTEGRATED HEALTHCARE

Clinical Strategy Meeting: Approaches to Dementia Care

January 20th, 2023

Care Transformation Collaborative of RI

Agenda

Introduction/Overview

Pano Yeracaris

5 min

Presentation: Approaches to Dementia Care & Panel and Group Discussion

Moderator: Victoria Parker, MS - **Alzheimer's Disease and Related Disorders Program Manager**

Tom Bayer, MD - **Brown Medicine Division of Geriatrics and Palliative Medicine**

Ana Tuya Fulton, MD, MBA, FACP, AGSF – **Chief Population Health Officer, Care New England & Executive Chief of Geriatrics, and Chief Medical Officer, Integra Community Care Network**

Reactants

Kelley Hurley, BS, PTA- **ADPI Grant Program Coordinator, CareLink**

Matt Collins, MD, MBA, **Executive Vice President and Chief Medical Officer, BCBSRI**

80 min

Objectives

- Learn about and discuss the RI Alzheimer's Disease and Related Disorders Project by the RI Dept of Health
- Hear about and discuss efforts to improve patient outcomes at Brown Medicine and Integra
- Learn about RI resources to assist patients and care givers with Alzheimer's Disease

CTC-RI Conflict of Interest Statement

Session presenters have no financial relationships with a commercial entity producing healthcare-related products used on or by patients.

If CME credits are offered, all relevant financial relationships of those on the session planning committee have been disclosed and, if necessary, mitigated.

Claim CME credits here: <https://www.surveymonkey.com/r/ZDZS5HG>



The AAFP has reviewed 'Advancing Comprehensive Primary Care Through Improving Care Delivery Design and Community Health,' and deemed it acceptable for AAFP credit. Term of approval is from 03/18/2022 to 03/18/2023. Physicians should claim only the credit commensurate with the extent of their participation in the activity. NPs and RNs can also receive credit through AAFP's partnership with the American Nurses Credentialing Center (ANCC) and the American Academy of Nurse Practitioners Certification Board (AANPCB).

Approach to Dementia Care

Victoria Parker, MS - **Alzheimer's Disease and Related Disorders Program Manager**

CTC-RI Clinical Strategy Meeting

January 20, 2023

Meet the Panelists

- Victoria Parker, MS - **Alzheimer's Disease and Related Disorders Program Manager**
- Tom Bayer, MD - **Brown Medicine Division of Geriatrics and Palliative Medicine**
- Ana Tuya Fulton, MD, MBA, FACP, AGSF – **Chief Population Health Officer, Care New England & Executive Chief of Geriatrics, and Chief Medical Officer, Integra Community Care Network**

Approach to Dementia Care

How do you / your practice view the patient population with dementia? – what are the current or potential challenges in managing this population?

How do you / your practice approach screening for cognitive impairment? Which members of the care team are involved in screening?

Does your organization have an approach to managing patients with dementia? How is the approach meeting or not meeting your goals as a practice?

Approach to Quality Improvement

What has been your experience - successes/challenges - with implementing quality measures?

What approach has your organization taken to implementing quality measures? How easy or difficult is that approach?

What features of a quality measure would make it more easy or difficult for your practice to implement?

Age Friendly Health Systems, 4M Framework

- How do you think focusing on care and management of patients with dementia aligns with the 4M, Age Friendly Framework?
- What (if any) interest does your practice have in pursuing Age Friendly recognition?

All Questions

- How do you / your practice view the patient population with dementia? – what are the current or potential challenges in managing this population?
- How do you / your practice approach screening for cognitive impairment? Which members of your team are involved in screening?
- Does your organization have an approach to managing patients with dementia? How is the approach meeting or not meeting your goals as a practice?
- What has been your experience - successes/challenges - with implementing quality measures?
- What approach has your organization taken to implementing quality measures? How easy or difficult is that approach?
- What features of a quality measure would make it more easy or difficult for your practice to implement?
- How do you think focusing on care and management of patients with dementia integrates with the 4M Age Friendly framework?
- What (if any) interest does your practice have in pursuing age friendly recognition?

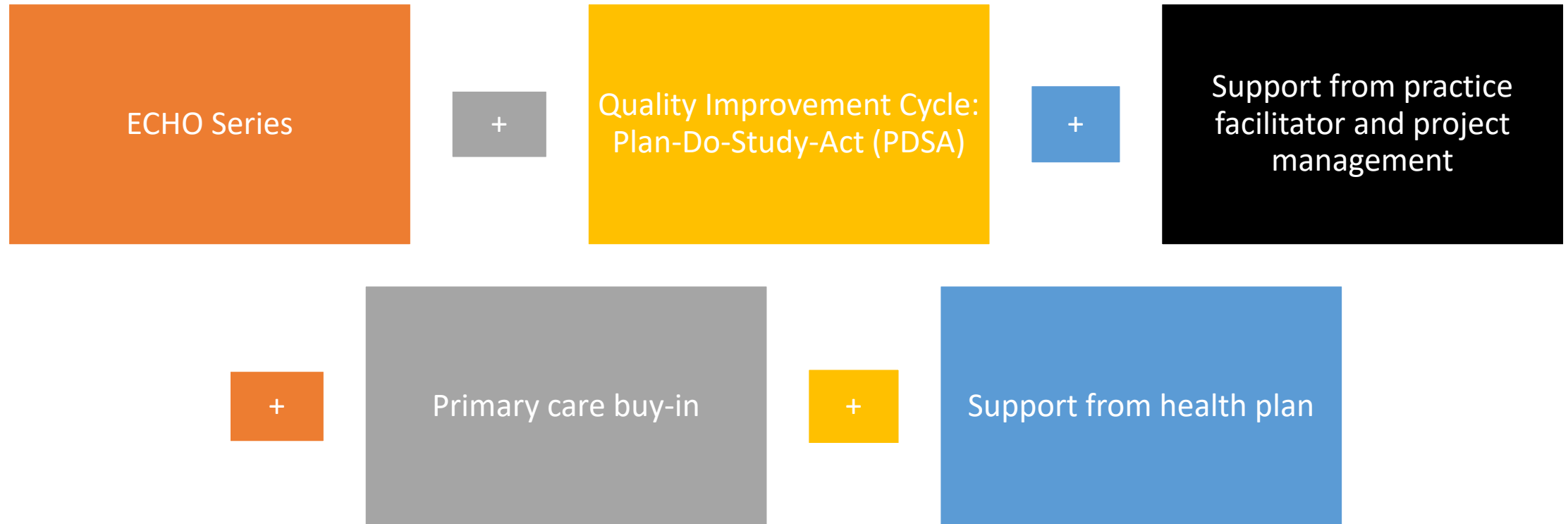
RIDOH Quality Improvement Collaborative

RIDOH ADRD Program is supported by CDC BOLD Funding to address Alzheimer's Disease through a public health approach.

OBJECTIVES OF QI COLLABORATIVE

- Convene subject matter experts, state agencies, community-based organizations, and health system partners to understand and identify opportunities to support the care and management of patients with dementia in RI
- Identify dementia-focused quality improvement measures
- Design a pilot model for measure implementation that meets the needs of primary care – *see next slide*
- Collaborate with key stakeholders to engage primary care and long-term care agencies in a learning collaborative that promotes best practice and shared learning
- Recruit primary care practices to participate in quality measure implementation

Pilot Model



Tom Bayer, MD - **Brown Medicine Division of Geriatrics and Palliative Medicine**

| | Major Examples | Key features |
|-----------------------|--|--|
| Collaborative Care | Aging Brain Care, COACH-VA, ADC | Skilled/Advanced clinician collaborates with PCP |
| Community Partnership | Cleveland Clinic, Partners in Dementia Care, BRI Care | Protocol-based, telephone-based, connected with advocacy/support organization. |
| Care Management | REACH-VA, system navigation, Care Ecosystem | Similar to other chronic disease-focused care management |



Ana Tuya Fulton, MD, MBA, FACP, AGSF

Chief Population Health Officer, & Executive Chief of
Geriatrics & Palliative Care
Care New England Health System

Chief Medical Officer
Integra Community Care Network

Associate Professor of Medicine and Associate
Professor of Psychiatry and Human Behavior
The Warren Alpert Medical School of Brown University

Becoming Age Friendly

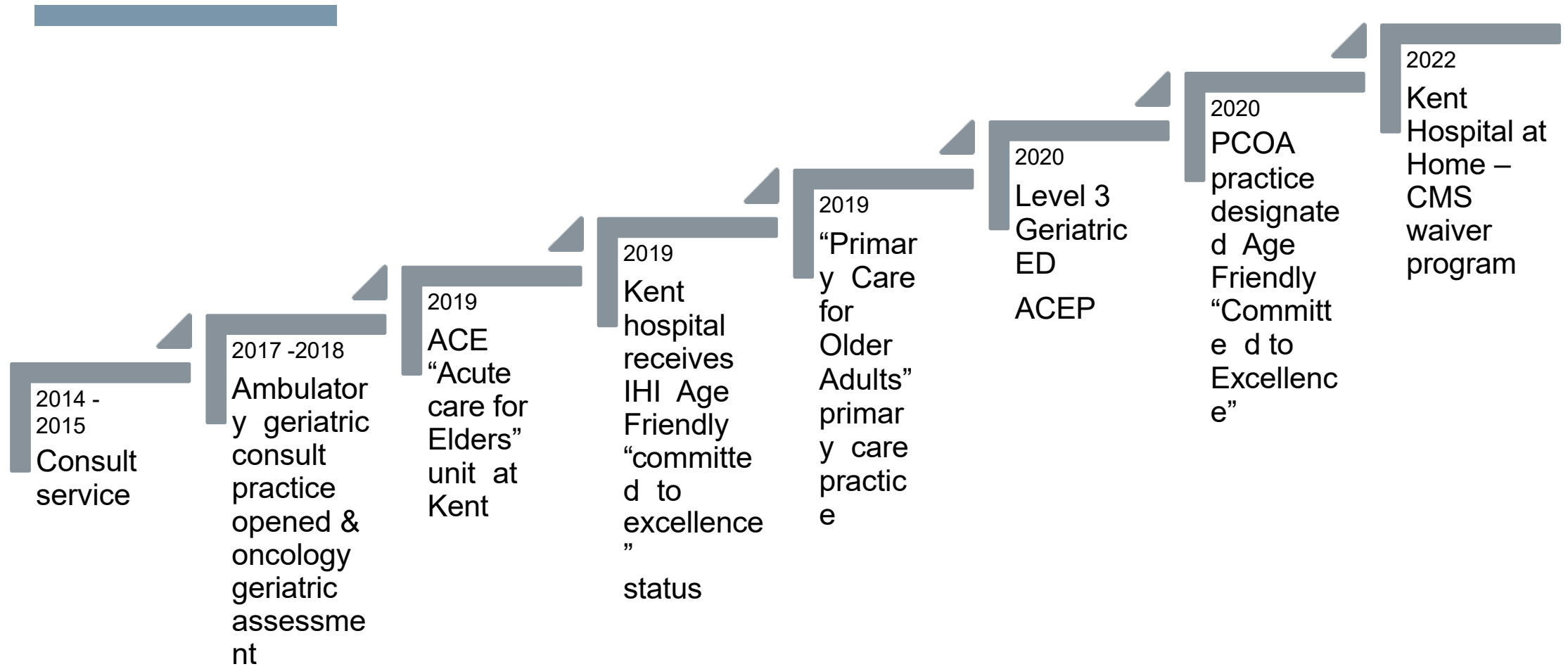
Geriatrics service line

Age-Friendly 
Health Systems

Committed to
Care Excellence
for Older Adults

Hospital and Ambulatory care
efforts

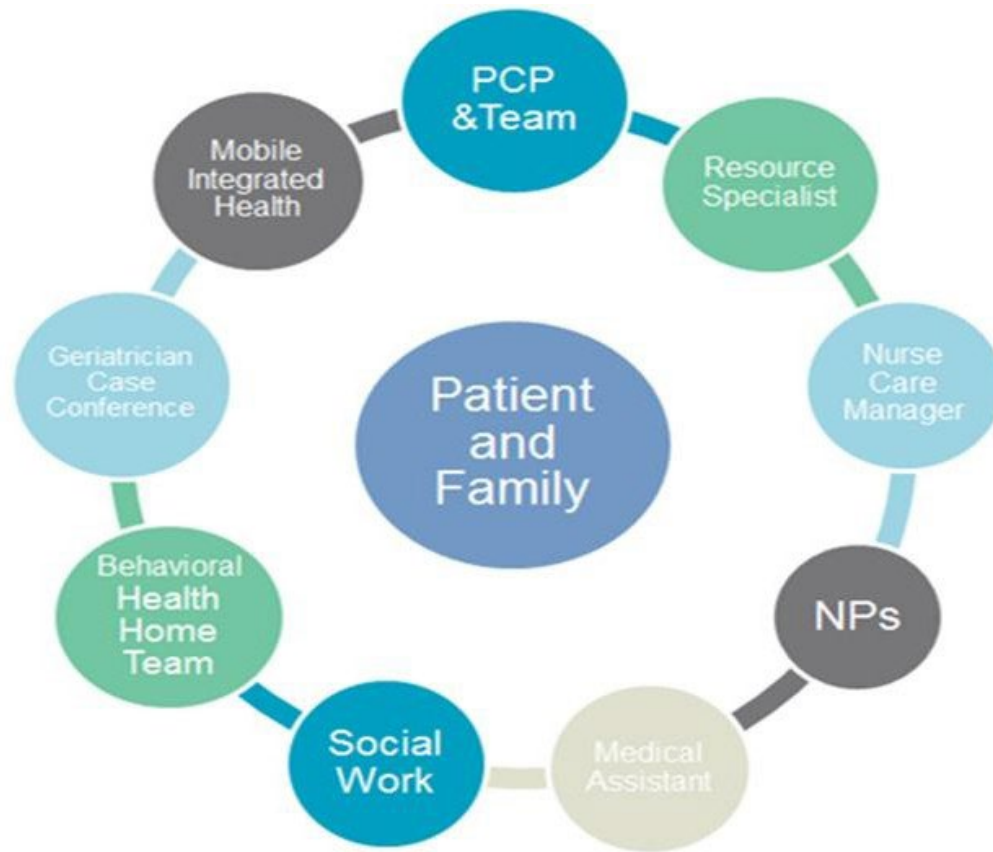
Efforts to date....



ACO based

Integra community care
network

Our Model:

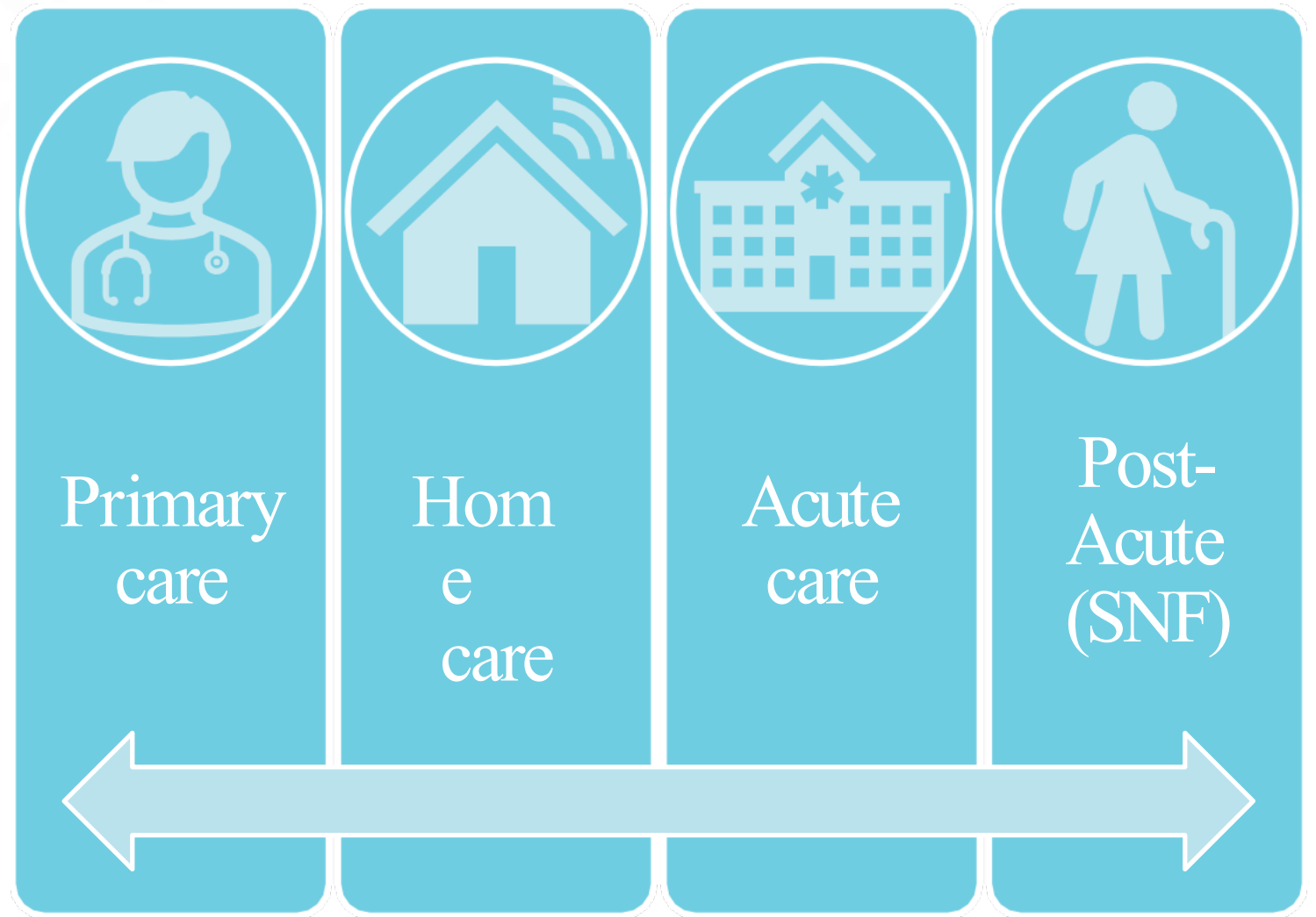


Integra @ Home
in the Comfort
of your Home

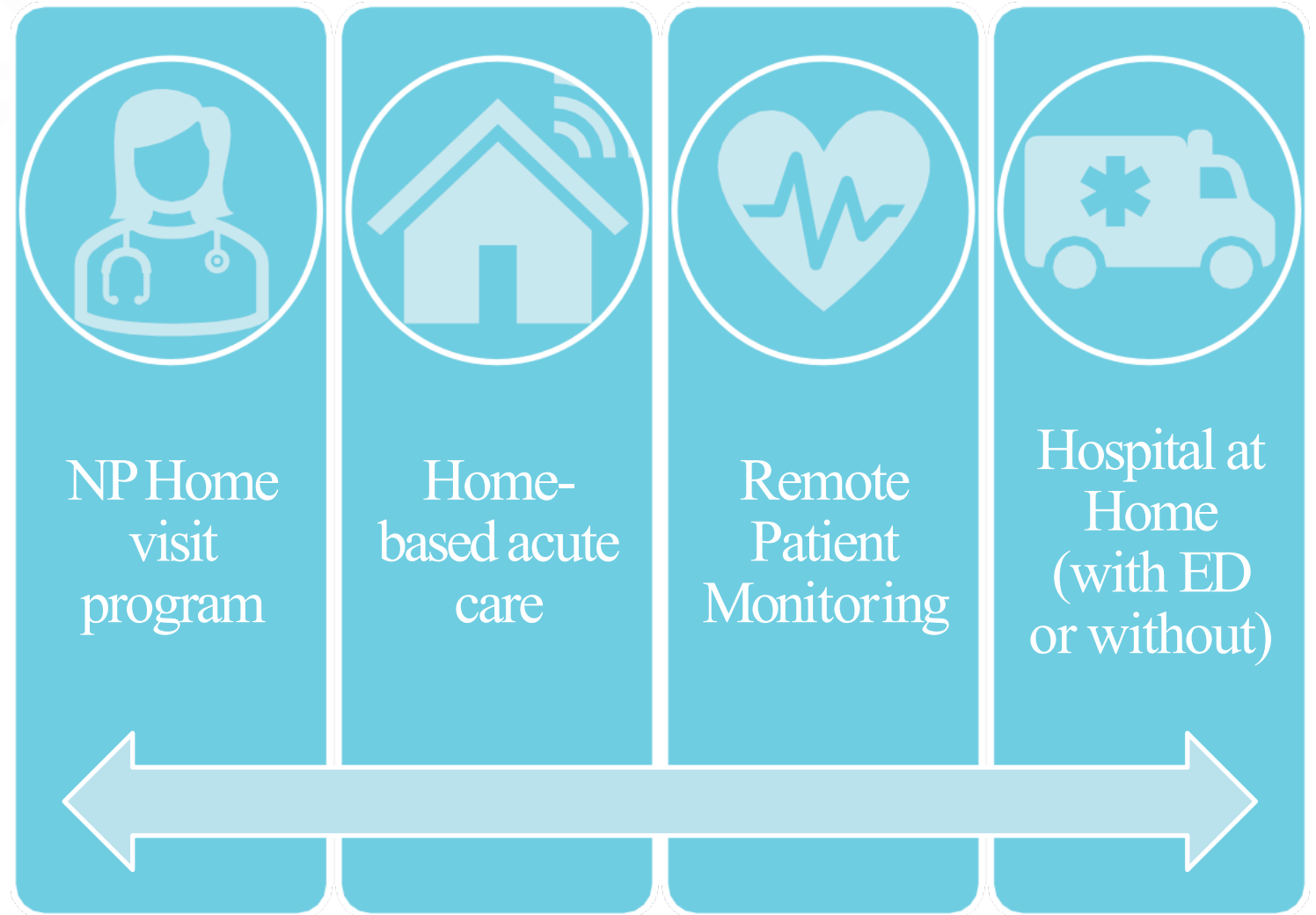
 **integra**
Community Care Network



Traditional care continuum options



Integra “gap filling programs”





“This has to be the best program your hospital has!”

“I want you to know how much I liked the program and I think it was really great.”



“An excellent program with compassionate + skilled individuals. They have been an integral part of my father’s care and have helped to avoid multiple ER visits + unnecessary phone calls to his doctors. This program is a godsend not only to the patient but to the family.”

CareLink

Kelley Hurley, BS, PTA
ADPI Grant Program Coordinator

Robyn Early, MA
Chief Growth Officer



CareLink
One partner for community
and post-acute solutions.



CareLink

Non-profit, mission-based healthcare network and provider of post-acute and community-based services for Rhode Island older adults and adults with disabilities serving Rhode Islanders since 1997.

CareLink is also a direct provider of rehabilitation services, mobile dental, podiatry, audiology, and psychiatry services.

CareLink has also expanded its programs for individuals living in the community including wellness programs that included fall prevention, Reiki, outpatient therapy, hearing health/audiology and mental wellness.



CareLink

One partner for community
and post-acute solutions.



Alzheimer's Disease Program Initiative Grant

Bringing evidence-based care, treatment, case management and education to Rhode Islander's living at home with dementia

- Skills2Care®
- Cognitive Stimulation Therapy

Qualifications to participate:

- Community-dwelling
- Cognitive impairment
- Rhode Island resident

To make a referral:

Contact Grant Coordinator
Kelley Hurley

401-490-7610 ext. 116

khurley@carelinkri.org



Evaluation & CME Credits

Please complete the evaluation even if you are not claiming CME credits!

Claim CME credits here:

<https://www.surveymonkey.com/r/ZDZS5HG>

The AAFP has reviewed 'Advancing Comprehensive Primary Care Through Improving Care Delivery Design and Community Health,' and deemed it acceptable for AAFP credit. Term of approval is from 03/18/2022 to 03/18/2023. Physicians should claim only the credit commensurate with the extent of their participation in the activity. NPs and RNs can also receive credit through AAFP's partnership with the American Nurses Credentialing Center (ANCC) and the American Academy of Nurse Practitioners Certification Board (AANPCB).

