



**BURDEKIN GRAZING**

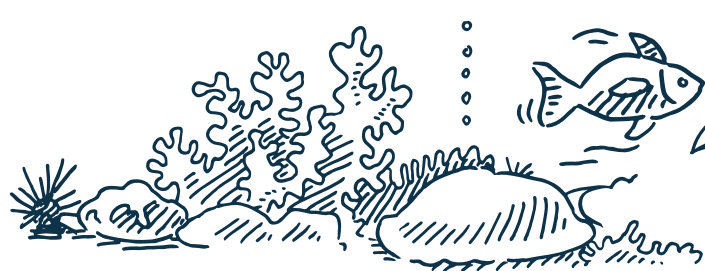
# ENHANCED EXTENSION COORDINATION

| **Summary**



FUNDED THROUGH THE QUEENSLAND GOVERNMENT  
REEF WATER QUALITY PROGRAM

# ENHANCED EXTENSION COORDINATION IN GBR PROJECT



**THIS PROJECT  
SUPPORTS GRAZIERS  
TO ACHIEVE REEF 2050 WATER  
QUALITY TARGETS**

The **Enhanced Extension Coordination in GBR Project** is operating in six GBR Natural Resource Management regions in Queensland. The Burdekin Grazing Regional Extension Coordinator is delivering the project in partnership with the Burdekin Regional Extension Network to improve extension services supporting the grazing industry throughout the Burdekin.

## SOME KEY PROJECT OUTCOMES:



- Enhanced communication, coordination and planning
- A Community of Practice to coordinate extension delivery
- A framework to co-design and implement effective collaboration
- Empowering local decision making
- Improving extension officers' skills and capacity
- New ways of working together

## BENEFITS...

### FOR GRAZIERS:

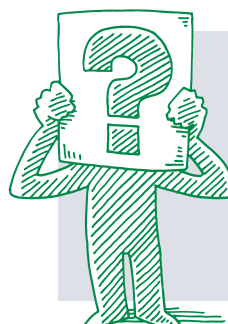
- ✓ Improved coordination of extension services
- ✓ Increased awareness of grazing projects and peer group activities
- ✓ Improved access to information and services by skilled extension officers
- ✓ Opportunities to participate in small, locally-relevant projects



**Did you know funds have already supported five projects in the Burdekin including soil health and grazing workshops**

### FOR EXTENSION STAFF:

- ✓ Connection to the regional extension network
- ✓ Up-to-date information on project work, funding programs and opportunities to collaborate with colleagues
- ✓ Opportunities to be part of decision-making and coordinated program design
- ✓ Access to training and professional development opportunities and specialised expertise



**Did you know funds have already supported staff training workshops including peer to peer work and training in leadership and negotiation skills**

# REGIONAL EXTENSION PLAN

A Regional Extension Plan for Grazing in the Burdekin Dry Tropics was developed with the support of the Regional Extension Network to improve grazing extension service delivery.

The plan identifies current activities and opportunities to build on current programs as well as fill gaps

in skills and service delivery. The plan supports a collaborative approach to ensure graziers can access the advice, information and support they need to make informed decisions around grazing practices to improve water quality and profitability.



## THE BURDEKIN GRAZING REGIONAL EXTENSION NETWORK

Graziers have access to a range of extension providers including industry organisations, not-for-profit community organisations, landcare networks, private consultations, agri-businesses, Natural Resource Management and research organisations, universities and government agencies. These organisations and bodies comprise the Burdekin Regional Extension Network.

Through this network, the Burdekin Grazing Regional Extension Coordinator has developed a collaborative and coordinated approach to extension delivery in the Burdekin.

This means better support for graziers to trial and adopt practices that improve water quality and profitability.

## EXTENSION NETWORK MEMBERS:

- NQ Dry Tropics
- Department of Agriculture and Fisheries
- Central Highlands Regional Resource Planning and Use Committee (CHRRUP)
- Dalrymple Landcare Committee
- Bowen Collinsville Landcare
- Desert Uplands Committee
- Resource Consulting Services
- CSIRO
- James Cook University
- Agforce North

# GRAZING PROJECTS FUNDED IN THE BURDEKIN

All decisions on projects are made through representatives of the Regional Extension Network.

## PROJECT HIGHLIGHTS SO FAR:

- ✓ A peer group in the Alpha area received guidance on forage budgeting and planned grazing practices
- ✓ Extension officers and graziers in the Bowen, Broken and Bogie Basin undertook soil health training
- ✓ Landholders in the Charters Towers area were supported to improve grazing practices and soil health
- ✓ Grazing extension staff were trained to develop ecologically sustainable rangeland management plans



*A Charters Towers landholder group learns how to assess soil health from grazing and pasture expert Judi Earl.*

## TRAINING AND CAPACITY BUILDING:

A subsidised training and development program, based on identified regional needs, is supporting local extension providers to improve their skills and knowledge.

Training for extension staff has included topics on: facilitation and communication skills, soil health and behavioural science.



**To find out more about the Burdekin Grazing Regional Extension Plan and extension networks please contact the Regional Extension Coordinator based at NQ Dry Tropics in Townsville on 4799 3500.**

*Photos courtesy of CHRRUP and NQ Dry Tropics*

This program is funded by the Queensland Government Reef Water Quality Program and delivered by the Department of Agriculture and Fisheries with partner organisations: Cape York NRM, Terrain NRM, NQ Dry Tropics, Fitzroy Basin Association and Burnett Mary Regional Group.

