



**CAPE YORK**

# ENHANCED EXTENSION COORDINATION

**Summary**

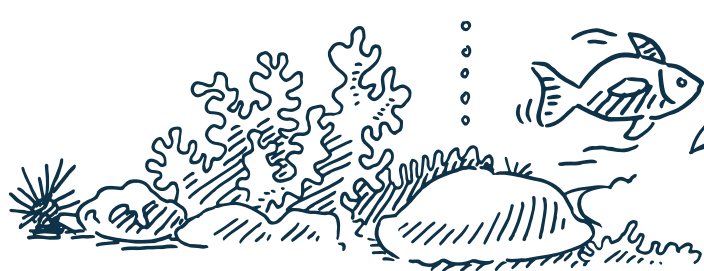


**Queensland  
Government**

FUNDED THROUGH THE QUEENSLAND GOVERNMENT  
REEF WATER QUALITY PROGRAM



# ENHANCED EXTENSION COORDINATION IN GBR PROJECT



THIS PROJECT SUPPORTS  
GROWERS AND GRAZERS TO  
ACHIEVE REEF 2050 WATER  
QUALITY TARGETS

The **Enhanced Extension Coordination in GBR Project** is operating in six GBR Natural Resource Management regions in Queensland. The Cape York Regional Extension Coordinator is delivering the project in partnership with regional grazing and mixed cropping producers and extension teams to improve extension services and better support producers.

## SOME KEY PROJECT OUTCOMES:



- Enhanced communication, coordination and planning
- A Community of Practice to coordinate extension delivery
- A framework to co-design and implement effective collaboration
- Empowering local decision making
- Improving extension officers' skills and capacity
- New ways of working together

## BENEFITS...

### FOR PRODUCERS:

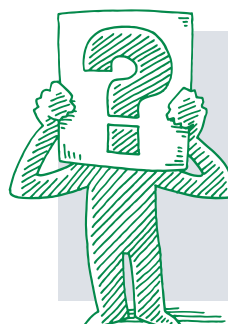
- ✓ Enhanced delivery of extension services
- ✓ More coordinated and effective support for growers
- ✓ Better access to improved information and highly skilled extension officers
- ✓ Opportunities for Peer to Peer grower groups



Did you know funds supported an on-farm pig trapping workshop?

### FOR EXTENSION STAFF:

- ✓ Connection to regional extension networks
- ✓ Up-to-date information on project work, funding programs and opportunities to collaborate with colleagues
- ✓ Opportunities to be part of decision-making and coordinated program design
- ✓ Access to training and professional development opportunities and specialised expertise



Did you know funds have supported training workshops including Soil Health?

# REGIONAL EXTENSION PLAN

A Regional Extension Plan (REP) for Cape York and Wet Tropics Dairy and Grazing and Mixed Cropping and Horticulture was developed to improve coordination and collaboration in both these regions and more efficiently target delivery of agronomic extension advice to industry.

A collaborative approach will enhance extension capacity at the local level by linking local groups

to the wider extension network, ensuring improved producer access to information, technology and technical support. This enables graziers and growers to make informed decisions around optimal farming practices to improve water quality and profitability of the Dairy and Grazing and Mixed Cropping and Horticulture sections.



## EXTENSION GROUPS DEVELOPED IN THE WET TROPICS AND CAPE YORK REGIONS

**Extensive Grazing:** • Mareeba and Cairns Department of Agriculture and Fisheries • Cape York Weeds and Feral Animals Incorporated • Southern Cape York Catchments • Terrain NRM • Cape York NRM • Barron Catchment Care

**Dairy and Intensive Grazing:** • Mareeba and Cairns Department of Agriculture and Fisheries • Johnstone River Catchment Management Association • Malanda and Upper Johnstone Catchment Care Group • Malanda Beef Plan Group • Terrain NRM • Cape York NRM • Remarkable NRM • Inner Boss Consultancy • Sweeter Soils • Bioactive Soil Solutions • Lion Milk Suppliers

**Mixed Cropping and Horticulture:** • Mareeba and Cairns Department of Agriculture and Fisheries • Terrain NRM • Cape York NRM • Barron Catchment Care • Australian Banana Growers Council • Horticulture Innovations • Farmacist

# PROJECTS FUNDED IN THE CAPE YORK AND WET TROPICS REGIONS

All decisions on projects are made locally through a collaborative approach by extension providers.

## PROJECT HIGHLIGHTS SO FAR:

- ✓ Weather Stations installed with data streaming to BOM
- ✓ Regional Forum for Extension and Communications staff
- ✓ Sustainable Dairy and Beef Productivity, Endeavour River Progressive Grazing and Cape York precision networks established
- ✓ Developments towards a Focus Farm demonstrating Holistic Grazing Management Principles as solutions to reducing gully head advancement
- ✓ Focus Farm in the Johnstone - trialing Microbial Soil Conditioners as a means of reducing dissolved inorganic nitrogen run-off



*Cape York NRM Regional Extension Coordinator Oliver McConnachie participating in the Precision Agriculture Network's Pig Trapping Workshop which was supported through Flexible Funds*

## TRAINING AND CAPACITY BUILDING:

The Training Development Manager is providing training and capacity building to local extension providers by identifying and delivering regional needs and providing subsidies for participants on completion of courses.

Training for extension staff has included: facilitation and communication skills, irrigation management, soil health and social science.



**To find out more about the Cape York Regional Extension Plan and extension networks, please contact the Regional Extension Coordinator based at Cape York NRM.**

**[oliver.mcconnachie@capeyorknrm.com.au](mailto:oliver.mcconnachie@capeyorknrm.com.au) or phone 1300 132 262**

This program is funded by the Queensland Government Reef Water Quality Program and delivered by the Department of Agriculture and Fisheries with partner organisations: Cape York NRM, Terrain NRM, NQ Dry Tropics, Fitzroy Basin Association and Burnett Mary Regional Group.

