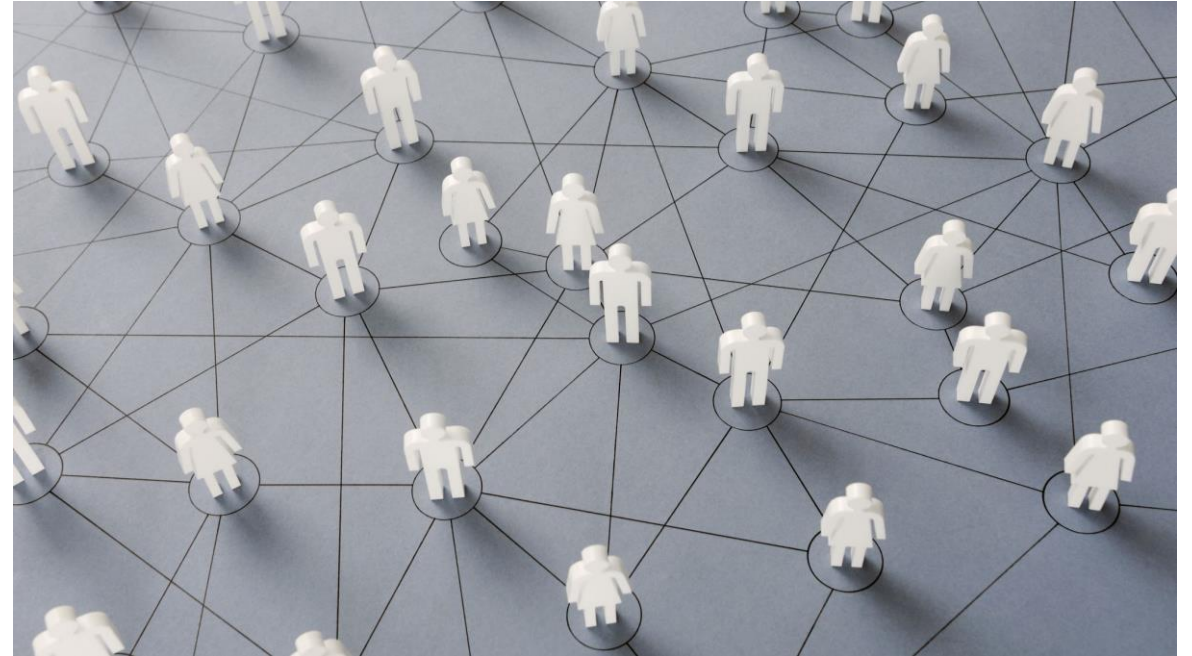
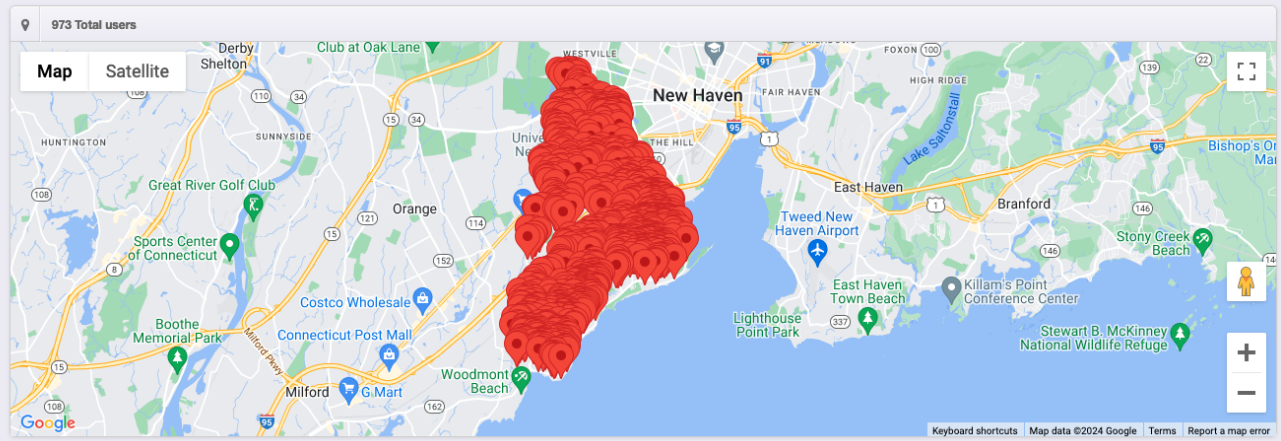




Community Connect



- Home
- Alerts
- Pick up calendar
- Build calendar
- Regular Collections
- On Demand Collections
- Routes
- Surveys
- Address
- Route Map
- Payment Details
- Voucher Details



New Users
No history of last 7 days

Next 7 Days Appointments
No Appointments

Easy to use dashboard with controls for:

- Calendar management
- Route building
- Collection types
- Addresses
- Surveys
- Voucher programs
- Payments

Dashboard tracks number of resident signing up for the program

Home > Pick up calendar

Calendar

February 2024

month week day

Sun	Mon	Tue	Wed	Thu	Fri	Sat
28	29	30	31 Trash, Recycling	1	2	3
4	5	6	7 Trash, Recycling	8	9	10
11	12	13	14 Trash, Recycling	15	16	17
18	19	20	21 Trash, Recycling	22	23	24

Home > Pick up calendar

Build calendar >

Regular Collections

On Demand Collections

Routes

Surveys

Address

Calendars can track multiple collection types. In addition to regular items community connect can help resident with:

- Brush/leaf
- Electronics
- Textiles
- Bulk items
- Christmas trees
- Hazardous waste (collection or drop off)

- Home
- Alerts
- Create Manual Alert
- Alert Log
- Pick up calendar
- Build calendar
- Regular Collections
- On Demand Collections
- Routes
- Surveys
- Address
- Route Map
- Payment Details
- Voucher Details

Home > Alerts > Alert Log >

Alert Show 10 entries

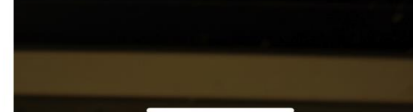
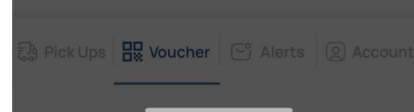
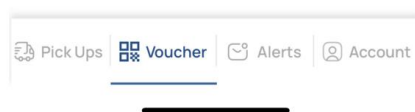
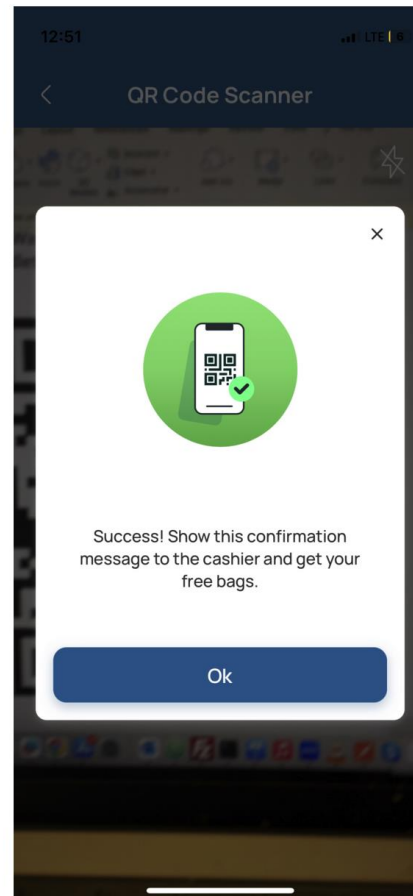
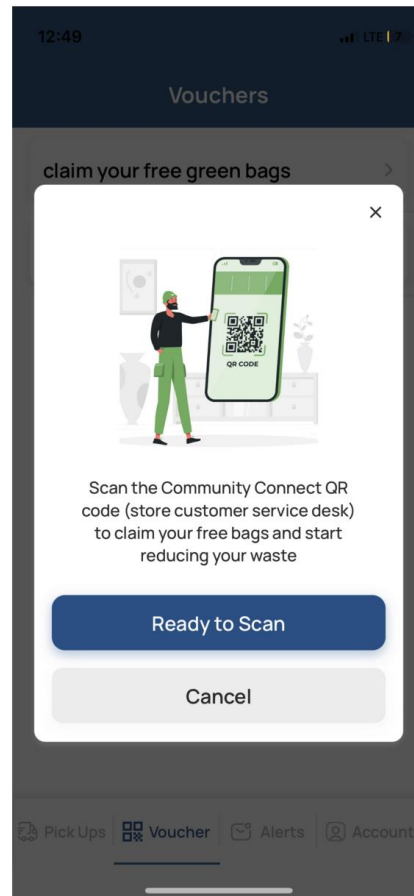
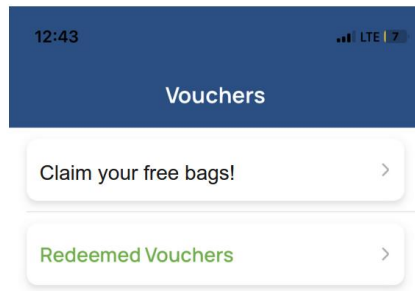
Date	Route	Message	Status	Delete
09/14/2023 12:00 PM	District 1 - Mon Trash/Recycle , District 2 - TueTrash/Recycle , District 3 - Mon Trash/Recycle , District 4 - Wed Trash/Recycle , District 5 - Tue Trash/Recycle , District 6 - Wed Trash/Recycle , District 7 - Thu Trash/Recycle , District 8- Thu Trash/Recycle , District 9- Fri Trash/Recycle , District 10- Fri Trash/Recycle	New survey alert! We're looking for Community Champions!	sent	---
09/13/2023 10:00 AM	District 1 - Mon Trash/Recycle , District 2 - TueTrash/Recycle , District 3 - Mon Trash/Recycle , District 4 - Wed Trash/Recycle , District 5 - Tue Trash/Recycle , District 6 - Wed Trash/Recycle , District 7 - Thu Trash/Recycle , District 8- Thu Trash/Recycle , District 9- Fri Trash/Recycle , District 10- Fri Trash/Recycle	Did you see our latest survey? We're looking for your feedback!	sent	---
09/12/2023 1:10 PM	District 1 - Mon Trash/Recycle , District 2 - TueTrash/Recycle , District 3 - Mon Trash/Recycle , District 4 - Wed Trash/Recycle , District 5 - Tue Trash/Recycle , District 6 - Wed Trash/Recycle , District 7 - Thu Trash/Recycle , District 8- Thu Trash/Recycle , District 9- Fri Trash/Recycle , District 10- Fri Trash/Recycle	Our latest survey is a search for Community Champions! Love the program? Now's your chance to let it be known.	sent	---
09/12/2023 1:09 PM	District 1 - Mon Trash/Recycle , District 2 - TueTrash/Recycle , District 3 - Mon Trash/Recycle , District 4 - Wed Trash/Recycle , District 5 - Tue Trash/Recycle , District 6 - Wed Trash/Recycle , District 7 - Thu Trash/Recycle , District 8- Thu Trash/Recycle , District 9- Fri Trash/Recycle , District 10- Fri Trash/Recycle	New survey out! Check the surveys tab to answer.	sent	---
08/24/2023 10:00 AM	District 1 - Mon Trash/Recycle , District 2 - TueTrash/Recycle , District 3 - Mon Trash/Recycle , District 4 - Wed Trash/Recycle , District 5 - Tue Trash/Recycle , District 6 - Wed Trash/Recycle , District 7 - Thu Trash/Recycle , District 8- Thu Trash/Recycle , District 9- Fri Trash/	If you need tips & tricks to make food scrap separation work in your household-- follow us on Instagram @ReduceTheTrash-- we'll show you how to make it easy	sent	---

Alerts and notifications are at the core of communication between residents and the town.

When collections are disrupted, alerts can be sent to just those on the affected routes/days.

Notifications are used to encourage behavior and inform residents about upcoming events.

Residents can message the town with comments and questions.



community  nnect

Free mobile app for residents works on Apple and Android (Google) devices, as well as iPads and other tablets.

We do not require personally identifiable information, but residents may choose to create a profile to save preferences, provide payment for collections and redeem vouchers or incentives.



PLATFORM DEMONSTRATION

community  nnect

Contacts:

Tom Cherry – tom@remyindr.org

David Lawrie – david@remyindr.org

THANK YOU!

community  nnect