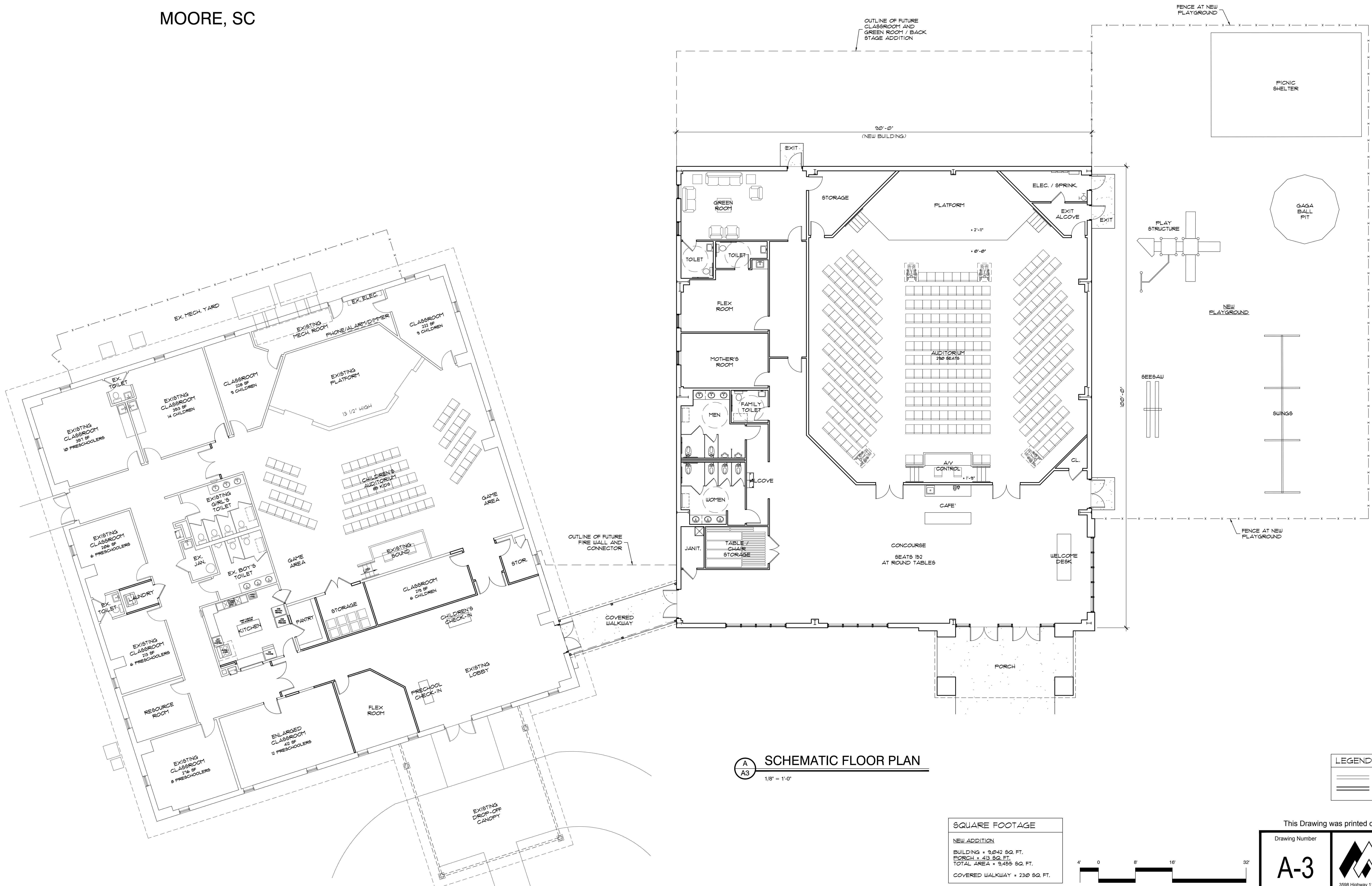


SCHEMATIC DRAWINGS FOR GRACE BIBLE CHURCH

MOORE, SC

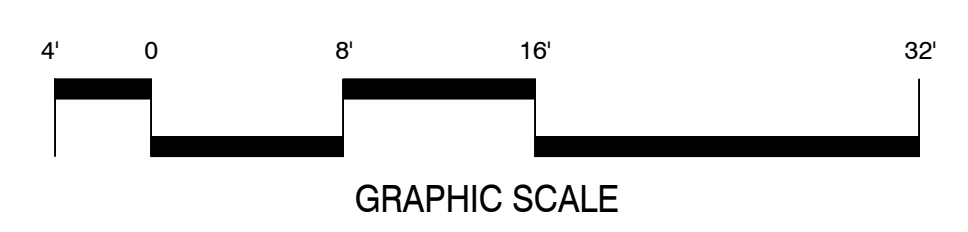
THIS DRAWING IS AN INSTRUMENT OF SERVICE. IT SHALL NOT BE REPRODUCED, ALTERED OR MISUSED IN WHOLE OR IN PART WITHOUT THE WRITTEN PERMISSION OF THE ARCHITECT. ARCHITECTURAL DRAWINGS ARE PROTECTED BY THE U.S. GOVERNMENT COPYRIGHT LEGISLATION. © COPYRIGHT 2024, MCABEE ARCHITECTS, INC. ALL RIGHTS RESERVED.



A SCHEMATIC FLOOR PLAN
A3 1/8" = 1'-0"

LEGEND	
	EXISTING TO REMAIN
	NEW WALL

SQUARE FOOTAGE	
NEW ADDITION	
BUILDING	9,042 SQ. FT.
PORCH	413 SQ. FT.
TOTAL AREA	9,455 SQ. FT.
COVERED WALKWAY	230 SQ. FT.



This Drawing was printed on August 01, 2024

Drawing Number
A-3

McAbee
architects

3598 Highway 11, Suite 218
Travelers Rest, SC 29690
Phone (864) 610-6133

Design
Code Analysis
www.mcabeearch.com