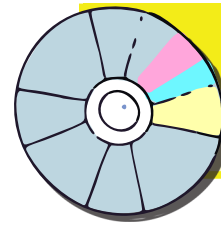


# POINTE

## Costume Requirements Sheet



SONG

"Thunderstruck"

### COSTUME

**LEOTARD:** 4-way stretch matte nylon/spandex leotard with power mesh neckline, sleeves and back, with strappy back detail.

Costume **MUST** be steamed and kept on a hanger in a garment bag until the show. Write your child's name on tag.



### HAIR

**LOW BUN**  
at the nape of the neck



### SHOES

**POINTE SHOES**



### TIGHTS

**CONVERTIBLE**



**LIGHT SUNTAN**

Light skin tones



**SUNTAN**

Medium skin tones



**COFFEE**

Dark skin tones



Tights can be purchased at the front desk!

### VISIT THE [RECITAL PAGE](#)

- Download recital packet
- Watch practice videos or download music



### SHOW ASSIGNMENTS & CALL TIMES

CLASS NAME	TEACHER CLASS TIME	6/7 SHOW ASSIGNMENT	6/7 SHOW CALL TIME	THU 6/5 DRESS REHEARSAL #1 CALL TIME	FRI 6/6 DRESS REHEARSAL #2 CALL TIME	DANCERS ASSIGNED
POINTE	Monica Thu 6:30	SHOW 1 @ 1:30 PM	1:15 PM		2:15 PM	Gabriella Ballard, Kayleigh Braga, Morgan Lodge, Naomi Overocker, Natalie Overocker
		SHOW 2 / SHOW 3	3:00 PM	1:40 PM		Gabriella Ballard, Kayleigh Braga, Morgan Lodge, Naomi Overocker, Natalie Overocker

### RECITAL LOCATION

Del Sol Academy of the Performing Arts  
3100 E. Patrick Lane | Las Vegas, NV 89120



### BUY TICKETS

Scan the QR code  
with your mobile device

