



FITZROY BASIN

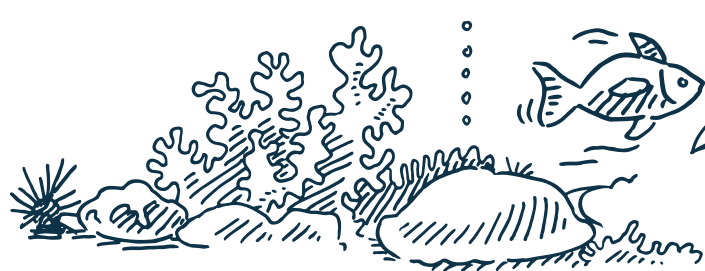
ENHANCED EXTENSION COORDINATION

| Summary



FUNDED THROUGH THE QUEENSLAND GOVERNMENT
REEF WATER QUALITY PROGRAM

ENHANCED EXTENSION COORDINATION IN GBR PROJECT



**THIS PROJECT SUPPORTS
OUR PRIMARY PRODUCERS TO
ACHIEVE REEF 2050 WATER
QUALITY TARGETS**

The **Enhanced Extension Coordination in GBR Project** is operating in six GBR Natural Resource Management regions in Queensland. The Fitzroy Basin Regional Extension Coordinator is delivering the project in partnership with the regional extension network to improve extension services supporting the growers and graziers in the region.

SOME KEY PROJECT OUTCOMES:



- Enhanced communication, coordination and planning
- A Community of Practice to coordinate extension delivery
- A framework to co-design and implement effective collaboration
- Empowering local decision making
- Improving extension officers' skills and capacity
- New ways of working together

BENEFITS...

FOR GRAZIERS & GROWERS:

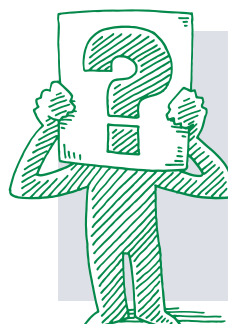
- ✓ Enhanced delivery of extension services
- ✓ More coordinated and effective support for growers and graziers
- ✓ Better access to improved information and highly skilled extension officers
- ✓ Opportunities for peer-to-peer groups



Did you know funds have already supported 13 projects including the pilot Regenerative Agriculture peer-to-peer group

FOR EXTENSION STAFF:

- ✓ Connection to regional extension networks
- ✓ Up-to-date information on project work, funding programs and opportunities to collaborate with colleagues
- ✓ Opportunities to be part of decision-making and coordinated program design
- ✓ Access to training and professional development opportunities and specialised expertise



Did you know funds have supported the formation of Fitzroy Regional Extension Network with over 70 members

REGIONAL EXTENSION PLAN

A Regional Extension Plan (REP) was developed in the Fitzroy NRM region to facilitate collaboration and coordination between extension providers, for the widespread benefit of Fitzroy growers and graziers.

Capacity building, knowledge transfer and increased engagement between extension providers and in turn, with landholders, will empower and influence the full breadth of our region - home to the largest river system draining to the Great Barrier Reef lagoon.



THE FITZROY EXTENSION NETWORK

The influential and prominent community forged as a result of the Fitzroy Extension Network.

Industry bodies, local government, technical consultants, valuers, wholesalers, suppliers, agents, NRM organisations and agri-businesses shape the Fitzroy Extension network, covering all aspects of extension advice currently delivered in the agricultural

landscape of the Fitzroy region.

All representatives within this network concur that effective collaboration, will have a greater impact on agricultural practice change in the region. Thus, collectively achieving improved production outcomes with environmental benefits.



PROJECTS FUNDED IN FITZROY BASIN

All decisions on projects are made locally through a collaborative approach by extension providers.

PROJECT HIGHLIGHTS SO FAR:

- ✓ 24 landholders have successfully reduced chemical inputs on their properties, which as resulted in substantial water and soil quality benefits
- ✓ 17 women representing some of the Fitzroy's most successful grazing enterprises have convened to form Fitzroy Women in Grazing (FWIG)
- ✓ Peer-to-peer learning in agricultural extension is mitigating the risks associated with practice change to the landholder
- ✓ Access to training (for landholders) incorporated the latest science and best minds



The Fitzroy Women in Grazing Group.

TRAINING AND CAPACITY BUILDING:

The Training Development Manager is providing training and capacity building to local extension providers by identifying and delivering regional needs and providing subsidies for participants on completion of courses.

Training for extension staff has included: facilitation and communication skills, soil health and behavioural science around practice change.



To find out more about the Fitzroy Regional Extension Network and other enhanced extension opportunities, please contact Kate Crozier, the Fitzroy Regional Extension Coordinator based at Fitzroy Basin Association Inc. in Rockhampton.

Katie.Crozier@fba.org.au or phone 0408 874 042

This program is funded by the Queensland Government Reef Water Quality Program and delivered by the Department of Agriculture and Fisheries with partner organisations: Cape York NRM, Terrain NRM, NQ Dry Tropics, Fitzroy Basin Association and Burnett Mary Regional Group.

