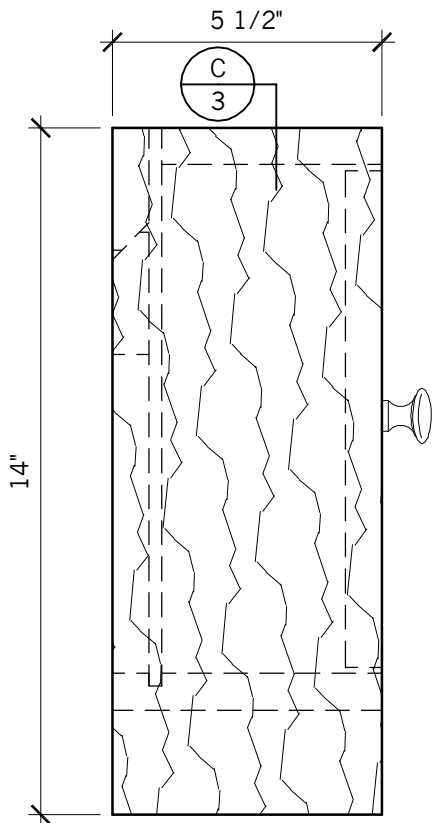
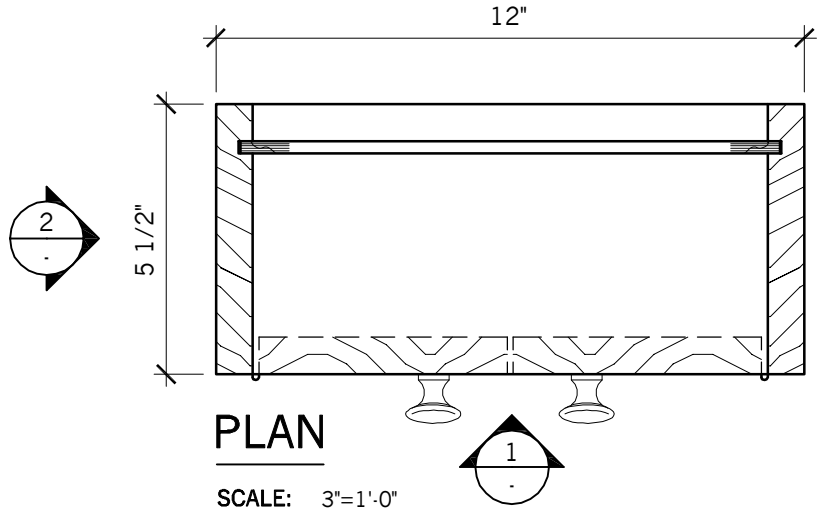
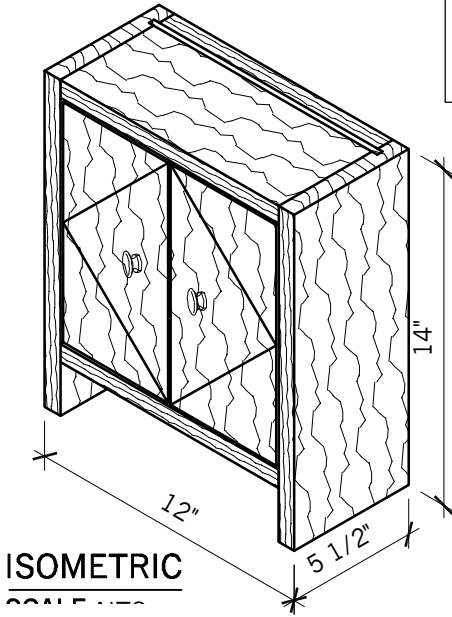


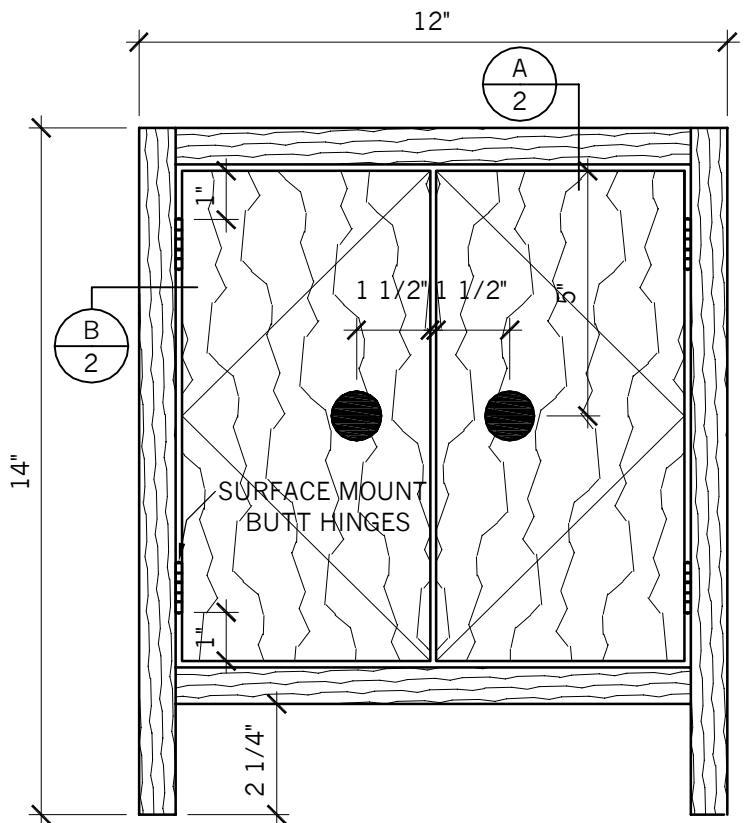
GENERAL INSTRUCTIONS

- 1.) Cut & assemble case with glue and 1 3/4" screws
  - 2.) Pre-drill holes, surface mount hinges and knobs
  - 3.) After assembly ease all sharp edges and corners
- ALL DIMENSIONS HAVE A 1/32" ± TOLERANCE

CONTESTANT # \_\_\_\_\_



**2** ELEVATION  
SCALE: 3"=1'-0"



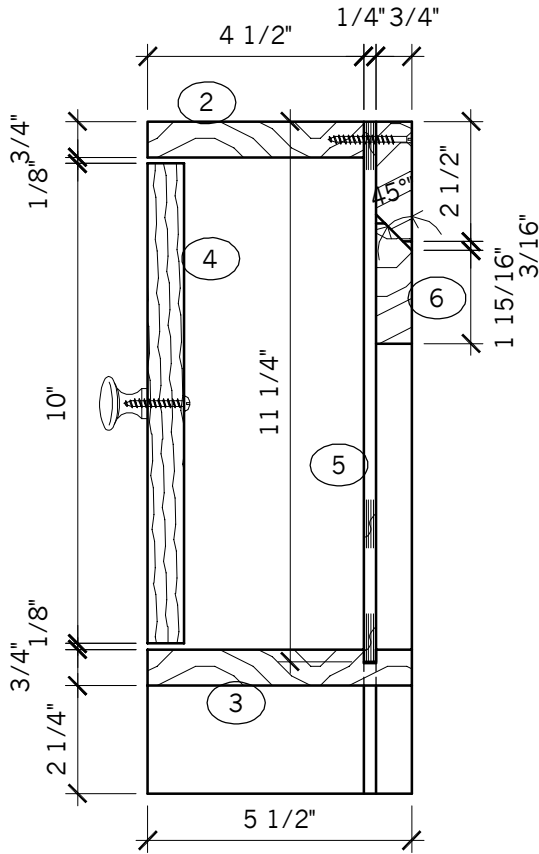
**1** ELEVATION  
SCALE: 3"=1'-0"

12/24/2022

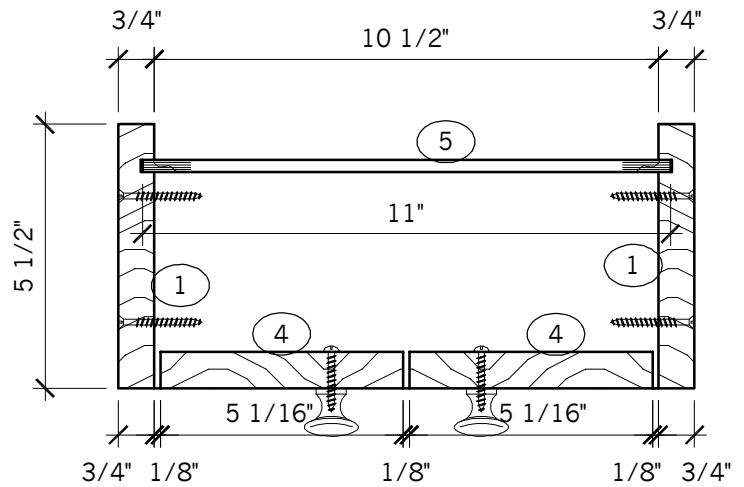


**CABINETMAKING**  
**2 DOOR HANGING CAB.**  
**CALIFORNIA REGIONAL**

DATE: 2023	JOB #: <b>CM</b>
DRAWN BY: sm	SCALE: 3"=1'-0"
DWG. NO. <b>1</b>	

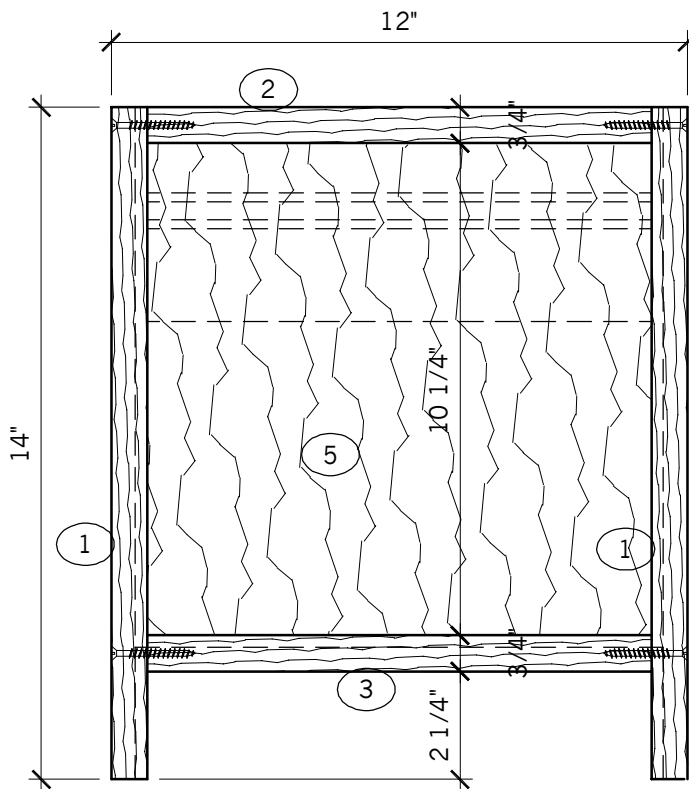


**A** VERT SECTION  
SCALE: 1 1/2"=1'-0"



**B** PLAN SECTION  
SCALE: 1 1/2"=1'-0"

CONTESTANT #



**C** LONGIT SECTION  
SCALE: 1 1/2"=1'-0"

12/24/2022



**CABINETMAKING**  
**LONGITUTINAL SECTION**  
**CALIFORNIA REGIONAL**

DATE: 2023	JOB #: <b>CM</b>
DRAWN BY: sm	SCALE: 3"=1'-0"
DWG. NO. <b>3</b>	

# BILL OF MATERIALS

#	QTY	DESCRIPTION	MATERIAL	THICKNESS	WIDTH	LENGTH	NOTES
1		Sides	Solid Stock	$\frac{3}{4}$ "	$5\frac{1}{2}$ "		
2	1	Top	Solid Stock	$\frac{3}{4}$ "	$4\frac{1}{2}$ "		
3	1	Bottom	Solid Stock	$\frac{3}{4}$ "	$5\frac{1}{2}$ "		Groove for back
4	2	Doors	Solid Stock	$\frac{3}{4}$ "			Drill hole for knob
5		Back	Sheet Stock	$\frac{1}{4}$ "		$11\frac{3}{8}$ "	
6		Hook Cleats	Solid Stock	$\frac{3}{4}$ "	$2\frac{1}{2}$ "		Miter one long (pair-set)
7							
8	4	Butt Hinges	Gatehouse	$\frac{1}{8}$ "	1"	2"	LOWE'S Item #352943 Model #S841-552
9	2	Cabinet Knob	Brainerd Rowland	N/A	$1\frac{1}{4}$ "	N/A	LOWE'S Item #362799 Model #P10512V·BIR·C7
10							

**NOTE: MAY USE EQUIVALENT HARDWARE**

***NO POINT DEDUCTION ON HARDWARE***

NOTES:

## BILL OF MATERIAL INSTRUCTIONS

In this phase of the competition you will have to look at Sheets 1, 2 & 3.

You will have to calculate some dimensions while others are given.

This portion of the competition is worth 85 of 1000 points.

***ALL DIMENSIONS HAVE A  $\pm \frac{1}{32}$ " TOLERANCE***

12/24/2022

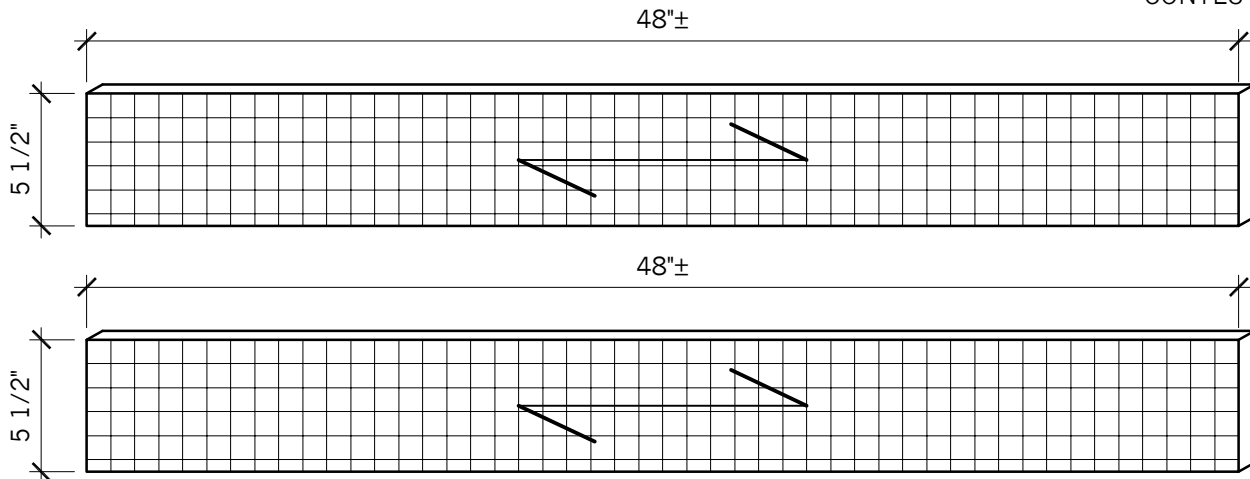


**CABINETMAKING**

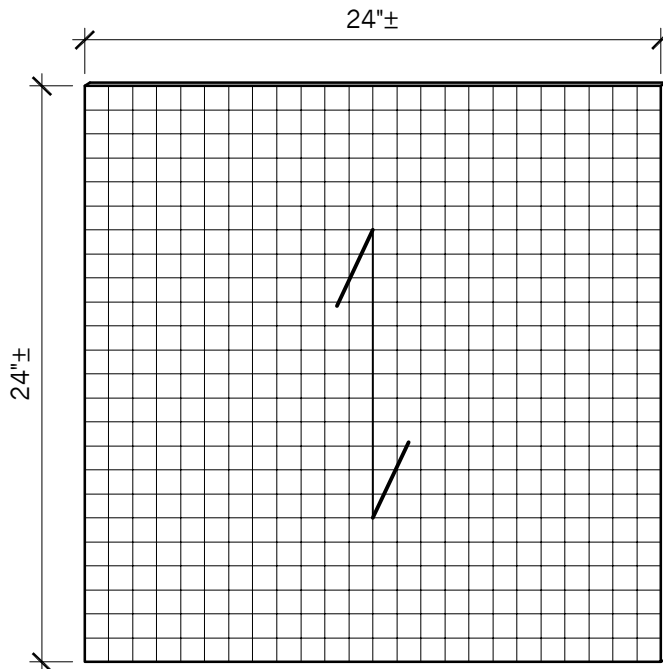
**BILL OF MATERIALS  
CALIFORNIA REGIONAL**

DATE: 2023	JOB #: <b>CM</b>
DRAWN BY: sm	SCALE: NTS
DWG. NO. <b>4</b>	

CONTESTANT #



-YOU WILL RECEIVE ONE PIECE OF SOLID STOCK  
1 @  $\frac{3}{4}$ " x  $5\frac{1}{2}$ "± x  $96$ "± (CUT IN HALF)



-YOU WILL RECEIVE ONE PIECE OF SHEET STOCK  
1 @  $\frac{1}{4}$ " x  $24$ "± x  $24$ "±

### MATERIAL LAYOUT INSTRUCTIONS

Once you've completed your Bill of Materials, lay out your parts on the corresponding material by drawing a line vertically and/or horizontally to represent the part. Hint: Label your part with Item #, Description or Size; sketch any details the part may have.

This portion of the competition is worth 150 of 1000 points.

Note: Each square is scaled to 1" Squared.



**CABINETMAKING**  
**MATERIAL LAYOUT**  
**CALIFORNIA REGIONAL**

DATE: 2023	JOB #: <b>CM</b>
DRAWN BY: sm	SCALE: 3"=1'-0"
DWG. NO. <b>5</b>	