

# RCA



## Reference CCS Architecture

*An initiative facilitated by the ERTMS Users Group  
and the EULYNX consortium*

### A. Interface Specification SCI\_8

**This is a snapshot version. Please use it with caution.**  
There is ongoing work. The content of this document  
may be unfinished, will likely contain errors and can be  
changed without prior notice.

	<b>Document Number and Issue</b>	<b>RCA.Doc.38, Public Snapshot (v0.0.7)</b>
	<b>Date of Publish</b>	<b>06-12-2019</b>
	<b>Page No</b>	<b>2</b>

## REVISION HISTORY

Version	Date	Superseded documents/description/details	Change Request No
0.0.7	06-12-2019	Initial version of component specification	n/a

	<b>Document Number and Issue</b>	<b>RCA.Dok.38, Public Snapshot (v0.0.7)</b>
	<b>Date of Publish</b>	<b>06-12-2019</b>
	<b>Page No</b>	<b>3</b>

## TABLE OF CONTENTS

1. Concept (Phase 1).....	6
2. System Definition (Phase 2) .....	7
3. Risk Analysis and Evaluation (Phase 3).....	8
4. System Requirements (Phase 4) .....	9
4.1. Class Diagram: SCI_8 IO Items .....	9

	<b>Document Number and Issue</b>	<b>RCA.Doc.38, Public Snapshot (v0.0.7)</b>
	<b>Date of Publish</b>	<b>06-12-2019</b>
	<b>Page No</b>	<b>4</b>

## **TABLE OF FIGURES**

Figure 1 Class Diagram: SCI\_8 IO Items.....9

	<b>Document Number and Issue</b>	<b>RCA.Dok.38, Public Snapshot (v0.0.7)</b>
	<b>Date of Publish</b>	<b>06-12-2019</b>
	<b>Page No</b>	<b>5</b>

## LIST OF TABLES

Table 1 Description of Classes ..... 10

	<b>Document Number and Issue</b>	<b>RCA.Doc.38, Public Snapshot (v0.0.7)</b>
	<b>Date of Publish</b>	<b>06-12-2019</b>
	<b>Page No</b>	<b>6</b>

**1. CONCEPT (PHASE 1)**

Cenelec Phase 1 is not covered in this document

	<b>Document Number and Issue</b>	<b>RCA.Dok.38, Public Snapshot (v0.0.7)</b>
	<b>Date of Publish</b>	<b>06-12-2019</b>
	<b>Page No</b>	<b>7</b>

**2. SYSTEM DEFINITION (PHASE 2)**

Cenelec Phase 2 is not covered in this document

	<b>Document Number and Issue</b>	<b>RCA.Doc.38, Public Snapshot (v0.0.7)</b>
	<b>Date of Publish</b>	<b>06-12-2019</b>
	<b>Page No</b>	<b>8</b>

**3. RISK ANALYSIS AND EVALUATION (PHASE 3)**

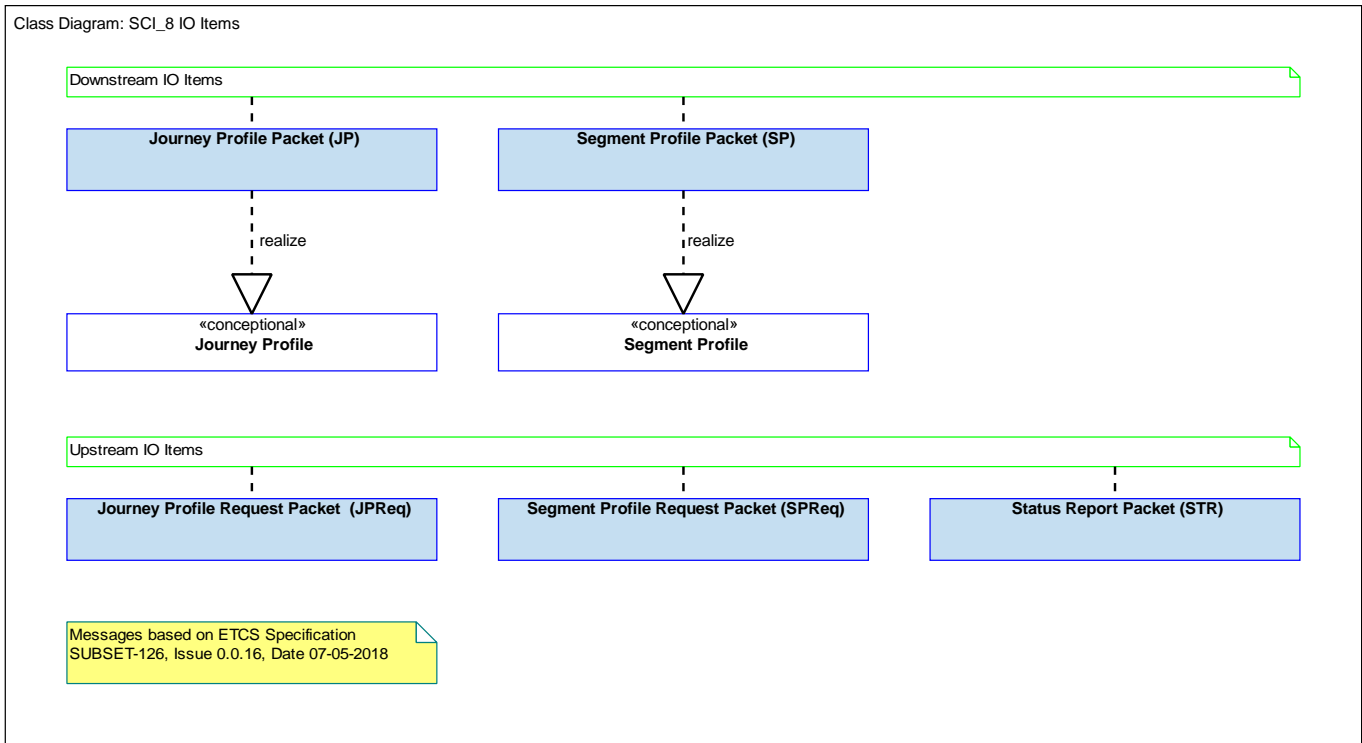
Cenelec Phase 3 is not covered in this document



	<b>Document Number and Issue</b>	<b>RCA.Dok.38, Public Snapshot (v0.0.7)</b>
	<b>Date of Publish</b>	<b>06-12-2019</b>
	<b>Page No</b>	<b>9</b>

## 4. SYSTEM REQUIREMENTS (PHASE 4)

### 4.1. Class Diagram: SCI\_8 IO Items



**Figure 1 Class Diagram: SCI\_8 IO Items**

Description:

DynamicUmlClassName: Class Diagram

Name	Description
Journey Profile Packet (JP)	<a href="#">ETCS</a> Message according to specification ATO over ETCS SUBSET-126
Journey Profile Request Packet (JPReq)	<a href="#">ETCS</a> Message according to specification ATO over ETCS SUBSET-126
Segment Profile Packet (SP)	<a href="#">ETCS</a> Message according to specification ATO over ETCS SUBSET-126
Segment Profile Request Packet (SPReq)	<a href="#">ETCS</a> Message according to specification ATO over ETCS SUBSET-126
Status Report Packet (STR)	<a href="#">ETCS</a> Message according to specification ATO over ETCS SUBSET-126

	<b>Document Number and Issue</b>	<b>RCA.Doc.38, Public Snapshot (v0.0.7)</b>
	<b>Date of Publish</b>	<b>06-12-2019</b>
	<b>Page No</b>	<b>10</b>

**Table 1 Description of Classes**