



Newsletter

AUGUST
2024

ISSUE

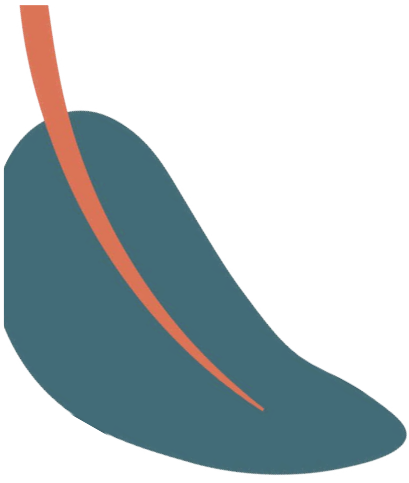
17 MINUTES OUTSIDE
IS THE NEW
10,000 STEPS

MEET-A-MEMBER
**MELINDA
GUSTIN**

UPCOMING
EVENTS
AND MORE

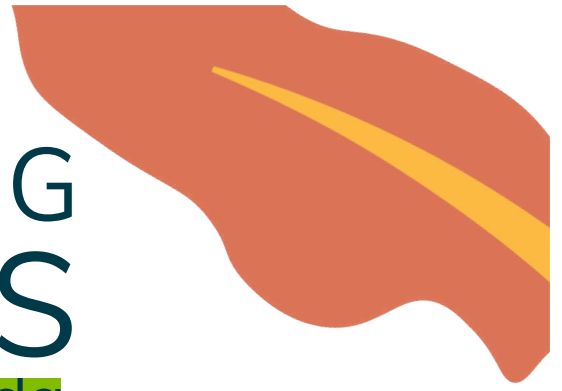


ASLA
NEVADA



UPCOMING EVENTS

Las Vegas, Nevada



PARK(ING) DAY DESIGN WORKSHOP

Saturday, August 24, 2024
11:00 AM - 1:00 PM
Public Works Coffee Bar
314 South Water Street, Henderson, NV, 8901

INCLUSIVE PLAY MATTERS

1 CEU/PDH
Thursday, August 29, 2024
5:30 PM - 7:00 PM
Location: Top Bar Restaurant
6160 W Tropicana Ave E8, Las Vegas, NV 89103

GOLF TOURNAMENT

Friday, September 13, 2024
12:00 PM - 6:30 PM
Boulder Creek Golf Club
1501 Veterans Memorial City, NV, 89005

PARK-(ING) DAY

Friday, September 20, 2024
4:00 PM - 8:00 PM
4205 Spring Mountain Rd, Las Vegas, NV 89102

CONNECTING COMMUNITIES TO TRANSIT WITH JEFF SPECK

1 AICP/ 1 PDH
Wednesday, September 25, 2024
4:00 PM - 5:30 PM
America First Center
222 South Water Street, Henderson, Nevada

ASLA CONFERENCE

From Sunday, October 06, 2024
to Wednesday, October 09, 2024
Washington D.C.

GPH LUNCH & LEARN

Friday, October 18, 2024
11:30 AM - 1:00 PM
Location: TBA

PARKPRO PLAYGROUNDS TOUR

Saturday, November 09, 2024
Time: 12:00 - 1:00 PM
Ice Age Fossils State Park
8660 N Decatur Blvd, North Las Vegas, NV 89085



nvasla.com



Reno, Nevada

BRIGHTVIEW - LUNCH & LEARN

We're excited to announce the highly anticipated Bright View Lunch coming this Fall 2024!

Enjoy delicious food, refreshing drinks, and a breathtaking view of the autumn foliage. It's the perfect opportunity to meet new people, network with industry professionals, and have a great time.

#BrightViewLunchParty #Fall2024
#NetworkingEvent #Foodie #JoinTheFun



Smart Play,[®]
meet affordable,
custom design

exerplay

Ether Wong
725-226-6024
ether@exerplay.com

landscape structures[®]

President's Message



MICHAEL HERNANDEZ
PRESIDENT

August is one of those months that seem to be very short.

Perhaps it is a month of transition? Perhaps it is the absolute desire to enjoy cooler weather? I am not sure of the reason, but for me, it is when I begin to look outside and think about what plants did not survive the summer heat and what can go in their place.

Although the weather is starting to dip and cool down, NVALSA's events are heating up! We have back-to-back events lined up for you all to participate in! If you are looking for professional development hours (PDH), social events, advocacy events, and or golfing, we have it covered! I am excited to say that this half of the year is packed with opportunities for both professionals, emerging professionals, and students!

We have provided a PDH opportunity nearly every month for licensed professionals – isn't that fantastic?! You will have the chance to enter next year with four rollover credits, believe it or not! Emerging professionals and students have the opportunity to network with potential employers and mentors if they carve time into their schedules – I don't want to hear excuses about not knowing where to look for a job – check the website, we have many firms and companies listed. If you want to go the extra mile and meet those employers, go where they go, and socialize, it is easy.

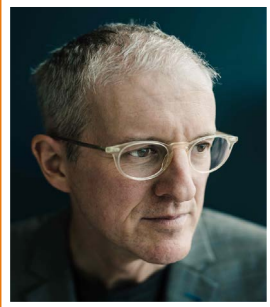
As always, stay informed, check our website, follow us on our socials, and stay cool.

Sincerely,

Michael

CONNECTING COMMUNITIES

to TRANSIT *a part of the Reimagine Boulder Highway project*



Walkability Forum featuring *Walkable City* author Jeff Speck!

September 25, 4:00-5:30PM

WHERE?

America First Center
Look Out Room, 2nd Floor
222 South Water Street
Henderson, NV 89015

Now that enhanced transit is coming to Boulder Highway, join us for a discussion on how we can safely connect our community to the corridor!

AGENDA

- **4:00-4:15-** Welcome
- **4:15-5:15-** Jeff Speck Presentation on Walkability and Boulder Highway with Discussion
- **5:15-5:30-** Wrap-Up

(light refreshments will be provided)



ASLA
NEVADA



RSVP here:



Please RSVP to earn
1 AICP or 1 PDH credit



HENDERSON™



For more information about this project-
Contact: Alejandra Fazekas
Email: cc2t@stantec.com
Visit: <https://tinyurl.com/BoulderCC2T>

Discover the Joy of Trii Climbing

A New Form of Playhouse!



Get in touch:
rhetta@berliner-playequipment.com


Berliner
Play equipment for life

Silver State Award 2024



ASLA, as a professional organization in Nevada,

is proud of its impact on the community through environmentally sound, sustainable, and innovative landscape architectural planning and design. The Silver State Award is the highest honor the Nevada Chapter of the American Society of Landscape Architects (NVASLA) can bestow upon an individual. It is given in recognition of the most distinguished service to the profession of landscape architecture and/or a significant body of work having a lasting influence on the theory, practice, and advancement of the profession in Nevada.

Deadline
Monday, September 15, 2024 @ Midnight

Nominate at
trustee@nvasla.com

A. Eligibility Requirements

Prospective candidates must comply with the below eligibility requirements.

- 1. Membership:** The prospective candidate shall be an NVASLA full member in good standing for 10 continuous years before nomination.
- 2. Knowledge Skills and Abilities:** The Qualified Candidate shall have demonstrated exceptional abilities in professional areas of practice, administration, management, education, and/or governance over the prior ten years.
- 3. Influence:** The Qualified Candidate shall have made a clearly positive impact on the profession and/or the state of landscape architecture in Nevada.

B. Sponsor

- 1.** Any NVASLA Member in good standing may sponsor another member for consideration of their qualifications to be a prospective candidate for award.
- 2.** The sponsor should determine the degree of interest on the part of a prospective candidate.
- 3.** Any NVASLA member in good standing may choose to act as their own sponsor for consideration of their qualifications to be a prospective candidate for the award.

C. Sponsorship Letter

The sponsorship/credential letter shall address all the eligibility requirements.



US Patent D999,802 S.

US Patent D952,383 S.

Setting the stage since 1962.

THE STELLA OF SUNNE™ COLLECTION.

Celebrating over 60 years, Victor Stanley designs, engineers and manufactures timeless site furnishings so you can bring communities to life. Our Stella of Sunne™ collection features a classic, minimalist look inspired by Scandinavian design aesthetics. Its eased edges and clean lines transform any environment into a comfortable and inviting space.

Contact Florence Gbenro at florenceg@victorstanley.com

VICTOR  STANLEY®

Create a timeless moment.®



VICTORSTANLEY.COM



MELINDA GUSTIN

As a member of NVALSA, I would like to...

Continue to inform the general population of the important contributions landscape architecture makes to enhance our outdoor experiences. Whether it's public spaces or private landscapes we work to share our knowledge and skills, from one-on-one conversations, to public collaborations and meetings. I've found that Nevada Landscape Architects are a particularly friendly and capable group of individuals that I've thoroughly enjoyed being a part of.

What aspect of Landscape Architecture interests you?

The field of Landscape Architecture offers many, diverse branches, (pun intended), of involvement. I really enjoy site visits and being involved in developing a plan which best meets the needs of the client, while respecting the existing conditions of the site. Site circulation and how people may interact within a completed project and the selection of appropriate plant materials, which enables them to do so, are the aspects that appeal most to me. Historic landscapes are my specialty.



Did you choose landscape architecture or did it choose you?

That's an interesting question. I'd have to say, I moved into the profession rather circuitously. **My wonderful parents were fabulous organic gardeners and had an interest in historic sites. Consequently, I too developed the same interests. My husband and I purchased a National Historic Landmark in Reno, and have spent years rehabilitating the mansion, and the historic, award-winning landscape.** (We've also owned and restored several other important, historic buildings in town.) I've been fortunate to be the Nevada Advisor to the National Trust for Historic Preservation since 2006, which has led to some great experiences which have enlarged my scope in better understanding and "reading" historic landscapes. I was a Harrison Fellow at the University of Virginia's Land Institute program, studying and documenting historic landscapes which included Monticello, Tufton Farms, Poplar Forest Plantation and President James Madison's plantation where they were in the process of conducting restoration pruning of the famed boxwood hedges along his terraced garden.

These experiences allowed me to work closely with the Nevada State office of Historic Preservation, (NVSHPO). I've served as the past NVALA HALS state liaison, and just this summer assisted Amanda Rookey, (the current HALS liaison), with the first HALS Challenge submission ever completed for Nevada. It was a terrific experience working with her team to document the history of the Cochran Ditch and Flume, and how it ultimately influenced the growth of the Reno area.



As President of the Nevada State board, what advice would you give to people who are not sure about getting licensed?

To begin with, it's a Nevada state statute that requires individuals to be licensed, in order to use the titles of Landscape Architect or designer. There are several avenues to licensure, (various combinations of education and experience), which permit an applicant to take the necessary national LARE examinations, or to be licensed via reciprocity for those already licensed in another state. These requirements may be viewed on the Nevada State Board of Landscape Architecture website, (www.nvbla.org). I must say, serving on this board has been an absolute pleasure. The Executive Director, Ellis Antunez, does a superb job conducting board business, which enables the board members to be fully briefed and prepared for each quarterly meeting. Ellis is always mindful of how best to serve current, as well as potential licensees and is happy to answer questions regarding licensing procedures and regulations. The goal of the board is to assist with increasing the number of qualified professionals gain licensure in Nevada.



What are your favorite markers, pens, or pencils you like to design with?

I find, when working with historic sites, my best initial tool is a camera. Each site is typically unique, and because design elements and features already exist, they may be required to remain intact. I refer to the U.S. Secretary of the Interior's Guidelines for Historic Preservation and the National Park Service's Preservation Briefs for guidance. Conducting research is an important component when it comes to making treatment recommendations for historic landscapes and gardens. Of course, a pencil with a #2 lead as well as a red pencil are always useful when dealing with trace overlays on historic and current photographs. I always include a licensed Landscape Architect on the team, when stamped drawings are required, to complement my work as a landscape historian.

THE POWER OF COLOR SELECTION

VIRTUAL CEU WORKSHOP

The Power of Color

Sept 11, 2024 | 12:00 - 1:00 pm PST



Scott Roschi
Creative Director,
Landscape Structures Inc

With a professional design background ranging from custom exhibits and displays to children's museums, Scott understands the intricacies of how to make a stunning visual impact while also offering a very personal experience. Scott is a seasoned creative leader, inspired by great strategy as well as execution. Scott believes that every playground should strive to inspire the imagination of children, and they will most certainly take it from there.

PLACE: Join us from anywhere, this course is virtual.

RSVP: Please RSVP by Sept 9, 2024
Call: 909-499-1896 | [email: lauren@exerplay.com](mailto:lauren@exerplay.com)
Meeting link will be provided upon registration.

Color is vital to the human experience. Through color, we feel; we communicate; we heal. In advertising it is used to sell products; in our lives, in our schools and offices use it to increase productivity.

When it comes to communication, color is unbeatable. Unconscious or otherwise, color can evoke emotions, inspire reactions, and change modes of thinking. It can excite or soothe your mood, raise, or lower your blood pressure, and even whet your appetite! Whether it's innate or learned, it's undeniable that color has a vital impact on how we go about our lives. It can affect the way we feel, how we think, how we interact with one another, and whether we buy a specific item. Color is a subtle yet powerful communication tool, and it informs the way we see and how we feel about the world.

.1 CEUS, 1 LUS AND 1 PDHS, WHICH MEET HEALTH, SAFETY AND WELFARE CREDITS. AIA CREDIT INCLUDING NANO UNITS ALSO AVAILABLE.

LEARNING OBJECTIVES:

After this 60-minute Learning Academy session, you'll have an understanding of the following learning objectives:

1. The basics of color theory and how the development of children's visual skills can be used to influence childhood wellbeing.
2. That preferences for colors evolve and develop just as children/individuals evolve and develop.
3. The importance of using research over preference when it comes to selecting color.
4. The impact color has in the built environment including on the playground.

hosted by

NO COST TO ATTEND



ExerPlay, Inc. | PO BOX 1160 | Cedar Crest, NM 87008 | 800-457-5444 | exerplay.com



All you need is **17 minutes**

A growing body of epidemiological evidence indicates that greater exposure to, or 'contact with', natural environments (such as parks, woodlands and beaches) is associated with better health and well-being, at least among populations in high income, largely urbanised, societies. While the quantity and quality of evidence varies across outcomes, living in greener urban areas is associated with lower probabilities of cardiovascular disease, obesity, diabetes, asthma hospitalisation, mental distress, and ultimately mortality, among adults; and lower risks of obesity and myopia in children. Greater quantities of neighbourhood nature are also associated with better self-reported health, and subjective well-being in adults, and improved birth outcomes, and cognitive development, in children.





BIKING



ASLA
NEVADA



BLICK
art materials



PARK

UP!

park(ing) day is a 'pop-up' single-day event to reprogram vehicular space for social exchange, artistic expression and play.

**Chinatown
New Address!**

4050 Vanessa Dr,
Las Vegas, NV 89103

**Friday,
September 20, 2024
5:00 - 8:00 pm**

For more information visit our website
nvasla.com/2024-parking-day

Volunteer Here:



landscapeforms®

Monterey

Softly Sophisticated, Comfortably Composed



**Nevada
Sales
Agency**

Contact us today!

Ed Forlani
702.468.9655
eforlani@nevadasalesagency.com
Jazmin Miller
702.343.7434
jmill@nevadasalesagency.com

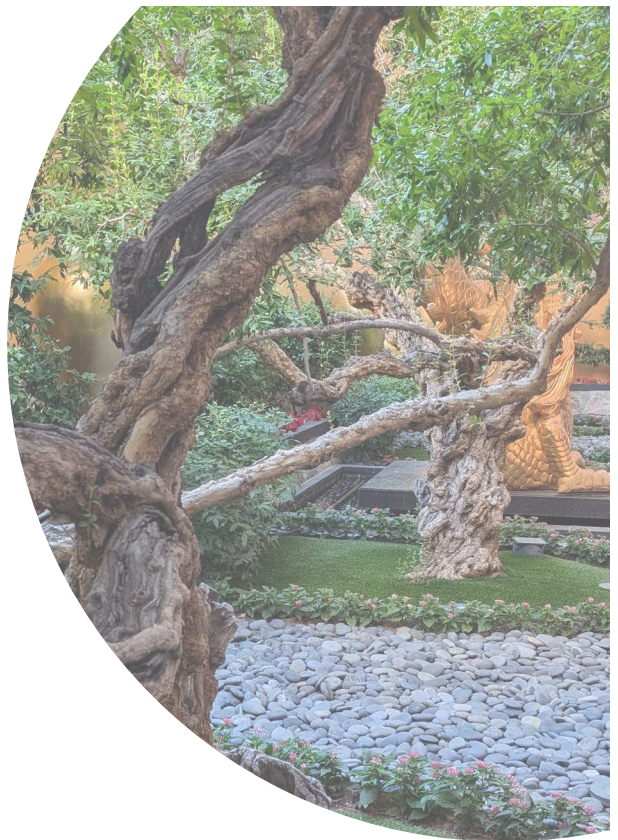
Kathy Wilson
702.371.5045
kwilson@nevadasalesagency.com
Lizzy Bradley
702.278.3655
ebradley@nevadasalesagency.com

Wynn Tour Recap

From the front of the house to the back of the house, we got to see it all!

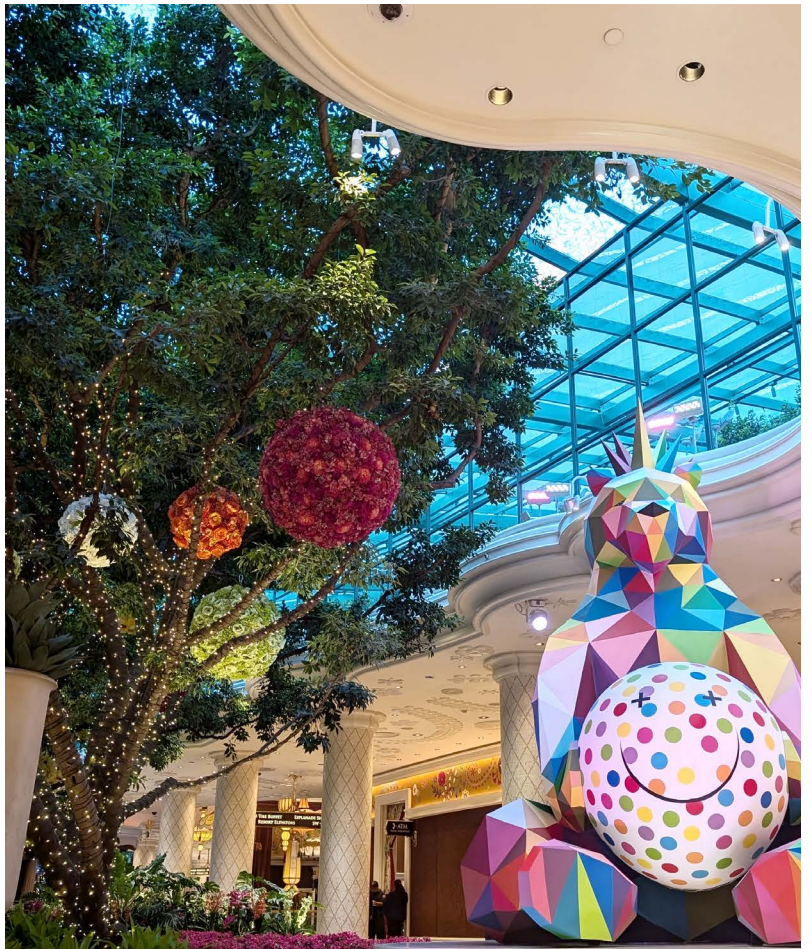
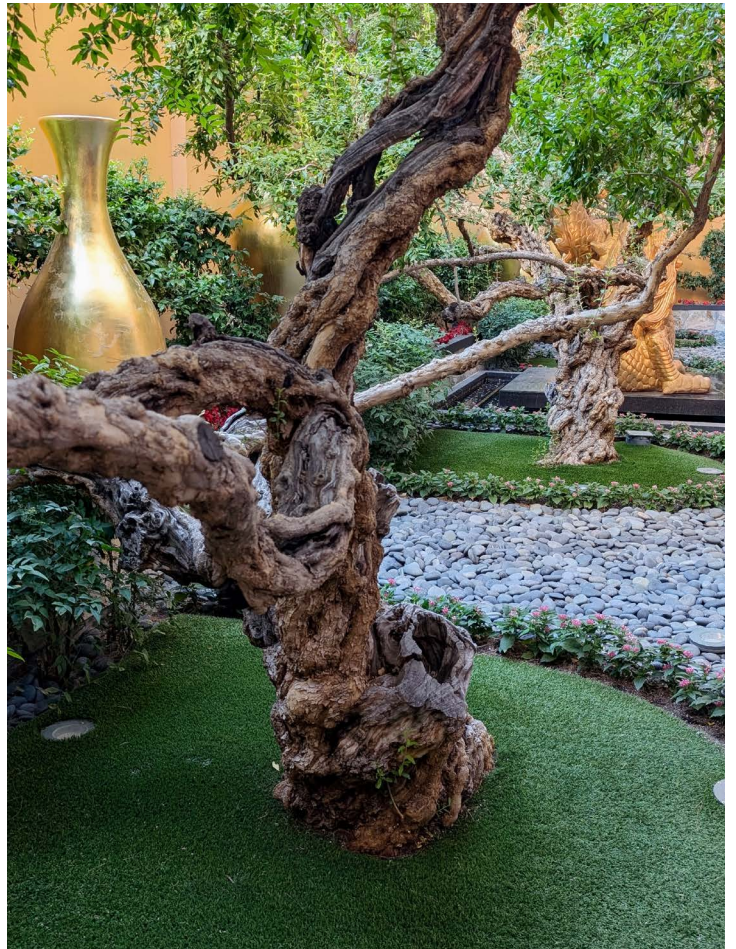
Did you know that Wynn Las Vegas is home to trees over 100 years old? In the Lake of Dreams area, there are some of the largest and oldest Afghan Pine trees in Las Vegas. These pines are transplants from the Desert Pines Golf Course. **If you have the opportunity to eat at Wing Lei, you will be able to see the highly maintained and beautiful, pomegranate trees that are over 110 years old.**

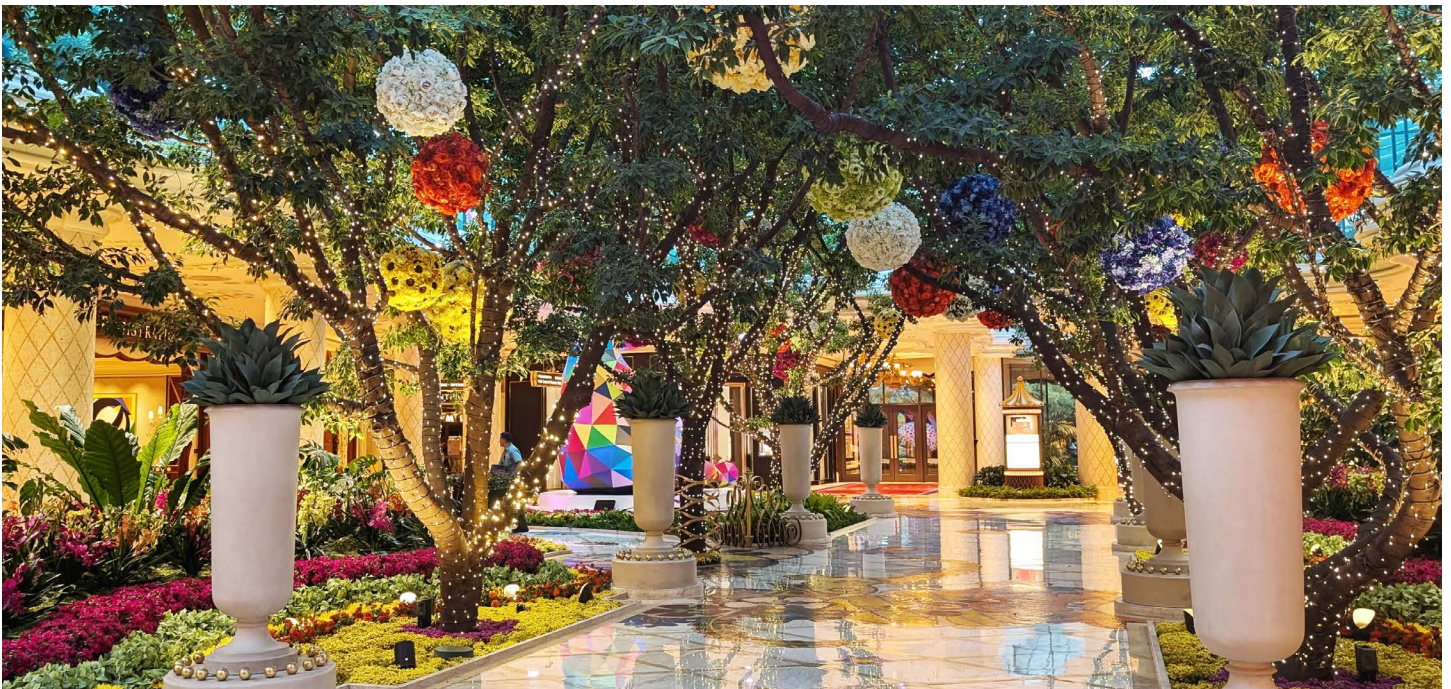
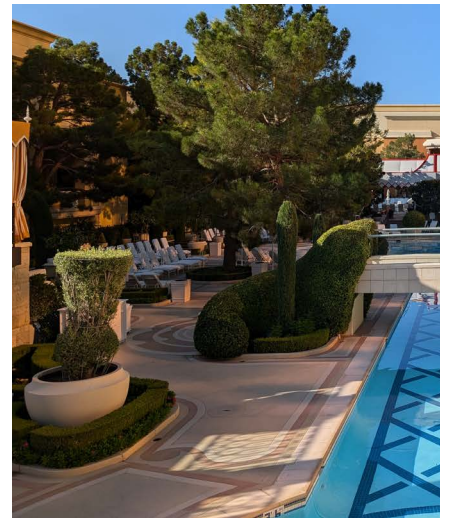
Our group learned many things about the Wynn and its operations. We learned that the trees in the atrium are real and are planted in soil, a few feet deep. We were told that the Wynn has separate budgets for their horticulture and floral divisions. **The horticulture division is responsible for all the outdoor areas and grounds while the floral division handles arrangements for large events and private individuals.**



The back of the house, where the designs and ideas come to life, is along a large network of halls and rooms. Here, orders are taken and fulfilled and stored in large refrigerated rooms. The walls are filled with pots, planters, soils, and decorations – a florist’s dream. Luckily, our tour happened early on the weekend so we saw what a “calm” day looked like.

In conclusion, **I would like to thank Fausto, Freddy, and Arcy**, for allowing us to take the tour and providing a great learning experience. Thank you to everyone who showed up on a very early Saturday morning!







CLIMATE PROGRAM OFFICE

ADVANCING SCIENTIFIC UNDERSTANDING OF CLIMATE, IMPROVING SOCIETY'S ABILITY TO PLAN AND RESPOND

Please join us for the NOAA Learning Series as we host three (3) virtual sessions featuring the Climate Adaptation Partnerships (CAP) program's work in your part of the country. Please see below for specific dates, geographic scope, and additional information.

WHAT: NOAA Learning Series on the Climate Adaptation Partnerships

(CAP) program in three geographic-specific sessions: A NOAA and regional partners briefing on how the CAP program builds localized capacity to inform on the ground adaptation solutions and better meet community goals when addressing complex climate hazards. Examples of complex climate hazards include compounding risks such as those posed by wildfire, smoke, and heat; or unexpected and overwhelming flooding and its impacts to human health and food sources, etc.

WHEN:

WESTERN REGION: Wed., Sept. 4, 2024, 1-2 PM PT/4-5 p.m.

ET(States/Territories: AK, AS, AZ, CA, CO, FM, GU, HI, ID, MH, MP, MT, NM, NV, OR, PW, UT, WA, WY)

CENTRAL REGION: Tue., Sept. 10, 2024, 2-3 PM CT/3-4 pm

ET(States/Territories: AR, IA, IL, IN, KY, KS, LA, MI, MN, MO, NE, OH, OK, TN, TX, WI, WV)

EASTERN REGION: Wed., Sept. 12, 2024, 1-2 PM CT/2-3 pm ET

(States/Territories: AL, CT, DE, FL, GA, MA, MD, ME, MS, NC, NH, NJ, NY, PA, PR, RI, SC, VA, VI, VT)

WHERE: Virtual

WHO: Jainey Bavishi, Assistant Secretary of Commerce for Oceans and Atmosphere and Deputy NOAA Administrator; Chelsea Combest-Friedman, Director of the NOAA Climate Adaptation Partnerships Program, and; Representatives from the 13 regional Climate Adaptation Partnerships teams

RSVP: Please click on the links above to register!



VIRTUAL CEU WORKSHOP

Continuing Education: Poured-In-Place

September 12, 2024 | 11 am - 12:30 pm PDT

Jenn Cutrona is a National Sales Manager for DuraPlay, Inc. who partners with Exerplay to create beautiful and safe playspaces for communities to enjoy.

DuraPlay, Inc. is a safety surfacing corporation with over 35 years of industry experience and over thousands of successful installations across the nation.

PLACE: Anywhere in the world! Time listed is in Pacific Time Zone. *Meeting link will be provided upon registration.*

RSVP: Please RSVP by September 9, 2024
Call: 909-499-1896 | [email: lauren@exerplay.com](mailto:lauren@exerplay.com)

- 1.5 CEUS:**
- Identify various substrate options and drainage plans
 - Understand installation specifics including edge details and critical fall height
 - Review considerations that impact cost
 - Learn about color blends, design ideas and best maintenance practices

NO COST TO ATTEND

hosted by



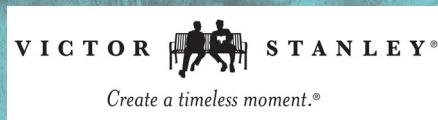
ExerPlay, Inc. | PO BOX 1160 | Cedar Crest, NM 87008 | 800-457-5444 | exerplay.com

thank you to all of our sponsors

platinum



gold



northern section



silver

