

Person County & City of Roxboro

Joint Comprehensive Land Use Plan



Meeting Agenda

1. Welcome
2. Initial Background Research
3. Existing Plan Review
4. Community Engagement Discussion
5. Upcoming Steering Committee Meetings

Overview

- County and City adopted individual plans in 2001
- Joint effort to update plans in 2020
 - Utilize shared resources
 - Develop a shared vision
 - Coordination / collaboration on land use decisions
 - Shared strategies between the County and City
 - Specific strategies for each jurisdiction as well

Purpose of the Plan

- The Plan will serve as the primary policy guide over the next decade and beyond for:
 - Land use;
 - Development;
 - Capital investments; and
 - Growth management decisions
- The plan will include clearly stated strategies for development that prioritizes key projects for implementation by both the public and private sectors.

LISTENING SESSIONS – MAJOR THEMES

GOVERNMENT
COORDINATION

RTP
INFLUENCE

POTENTIAL
JOB / REVENUE
LOSSES

UPTOWN
ROXBORO

INTERNET /
TELECOM

HOUSING

SLOW PACE OF
DEVELOPMENT

AMENITIES /
RECREATION

AGING
POPULATION

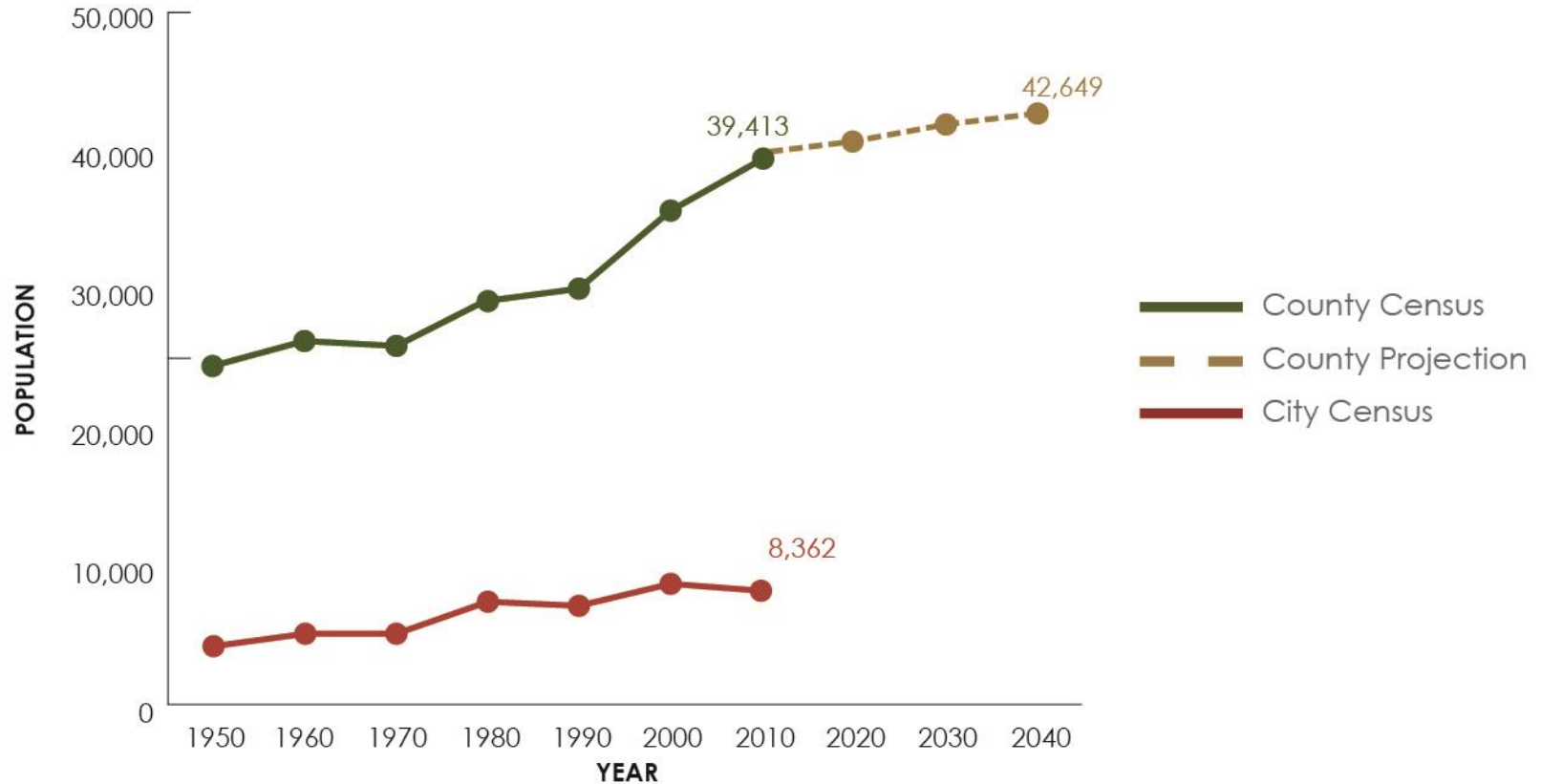
MEGA
PARK

Background Research

- Demographics
- Housing
- Economic Indicators
- Agriculture
- Land Cover and Natural Resources
- Existing Plan Review

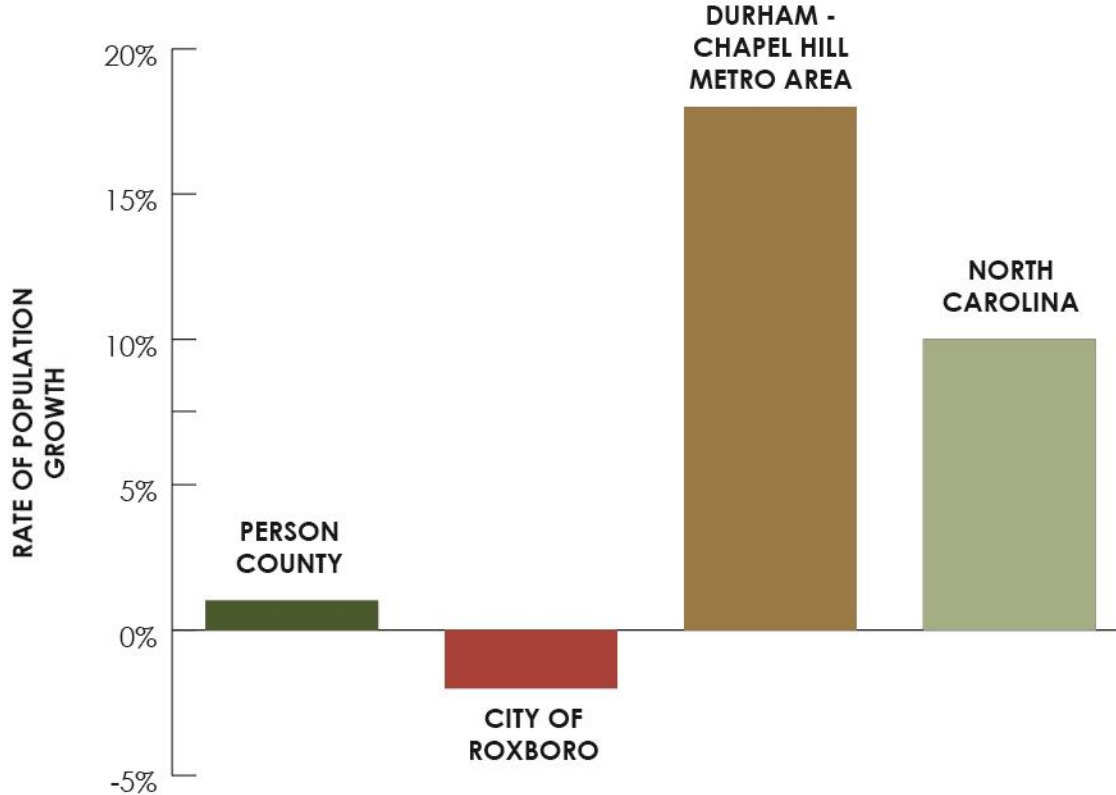
HISTORIC POPULATIONS & POPULATION PROJECTION

Source: United States Census & North Carolina Office of State Budget and Management



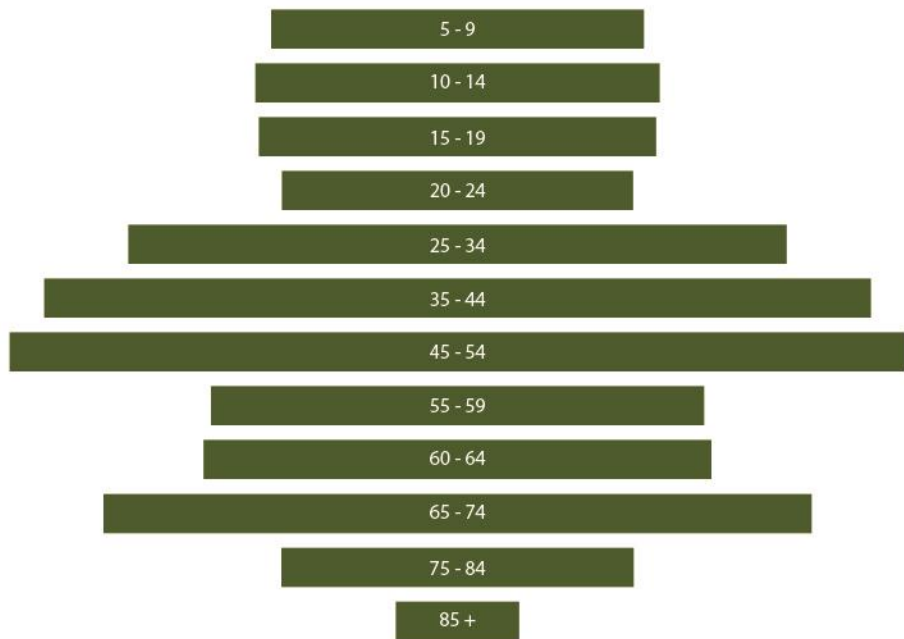
REGIONAL POPULATION GROWTH RATE (2010 - 2018)

Source: United States Census & American Community Survey

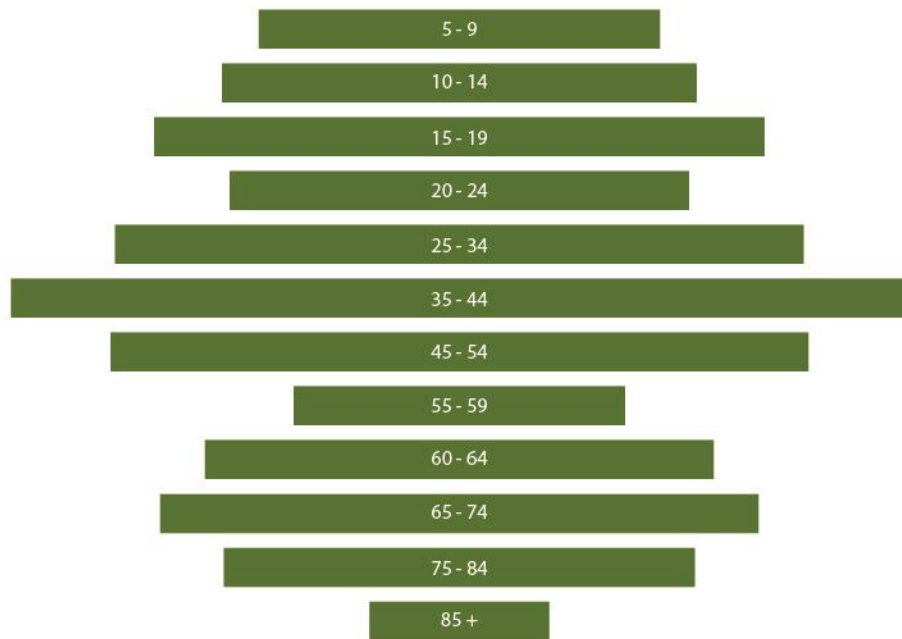


POPULATION PYRAMIDS

Source: American Community Survey, 2018



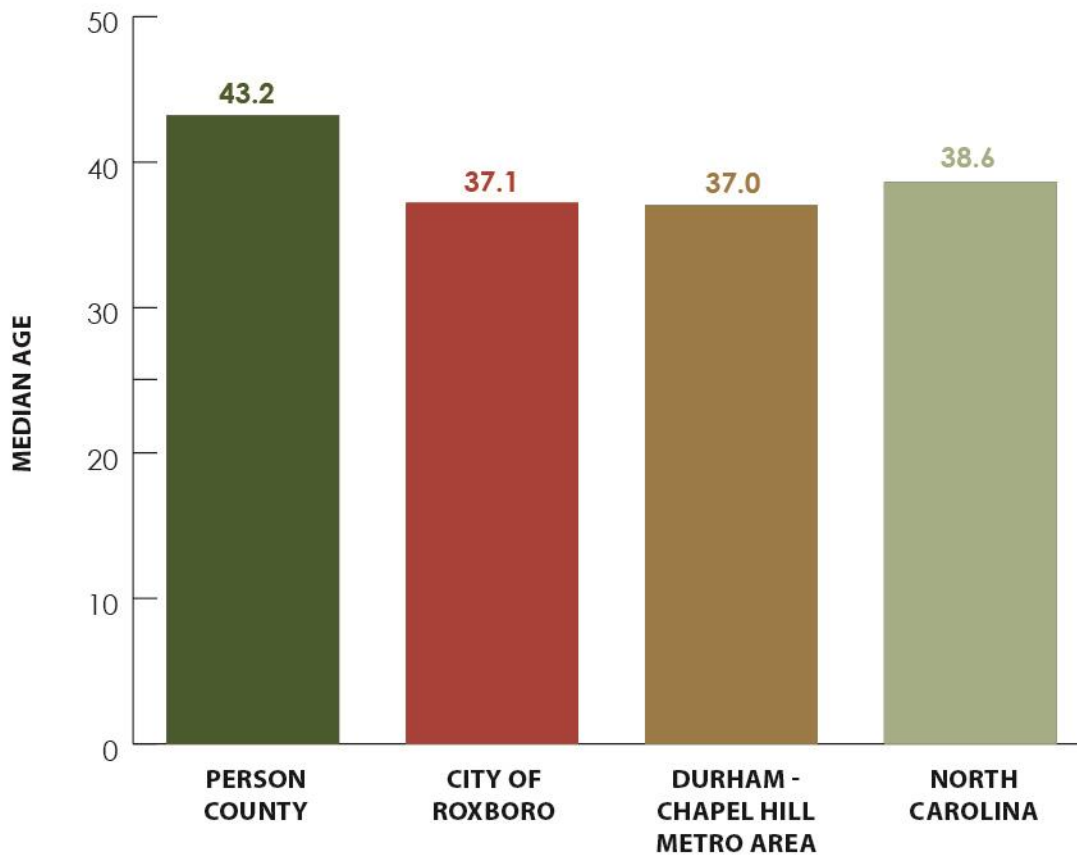
PERSON COUNTY



CITY OF ROXBORO

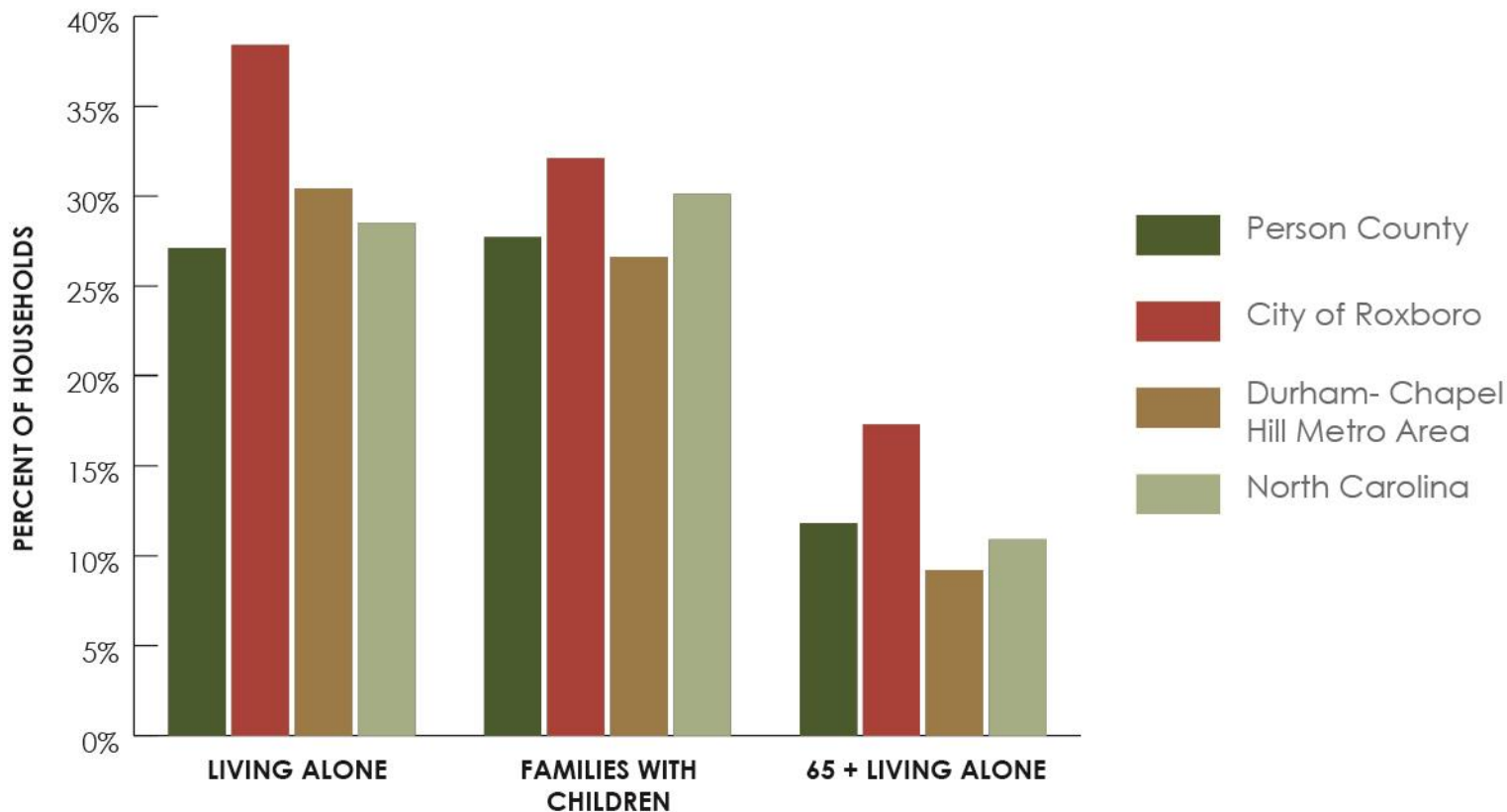
MEDIAN AGE

Source: American Community Survey, 2018



HOUSEHOLDS


Source: American Community Survey, 2018



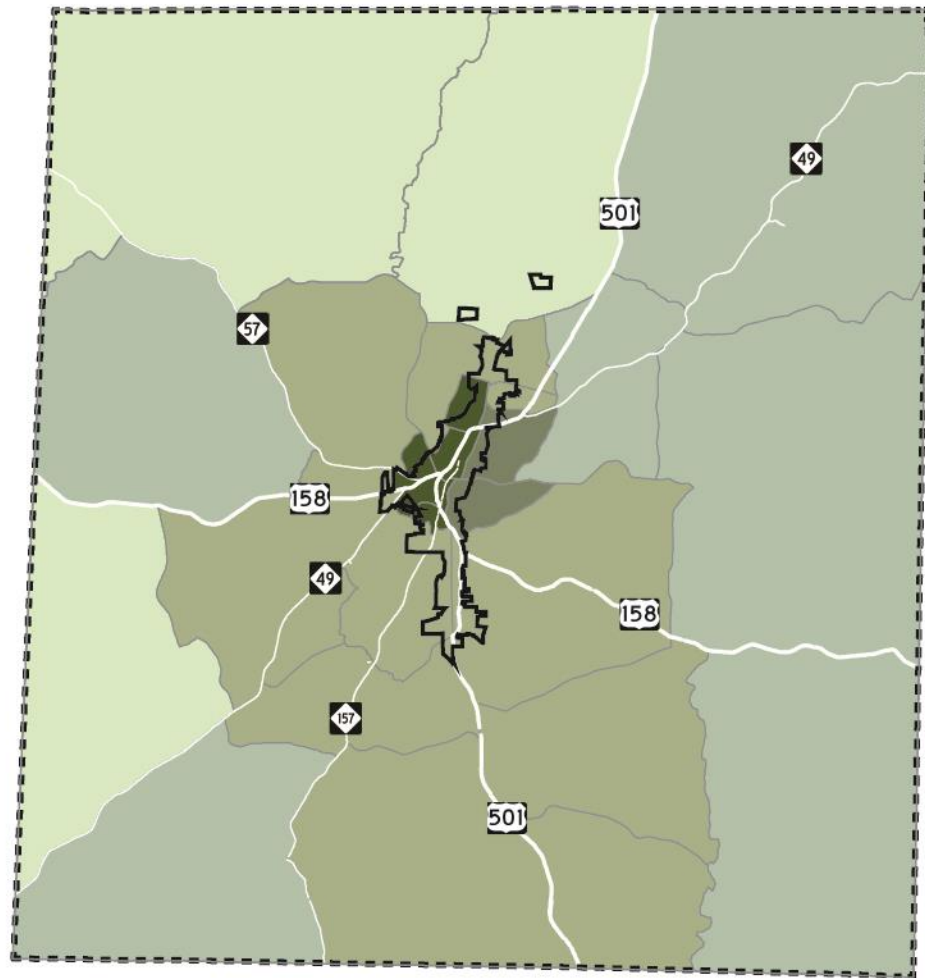
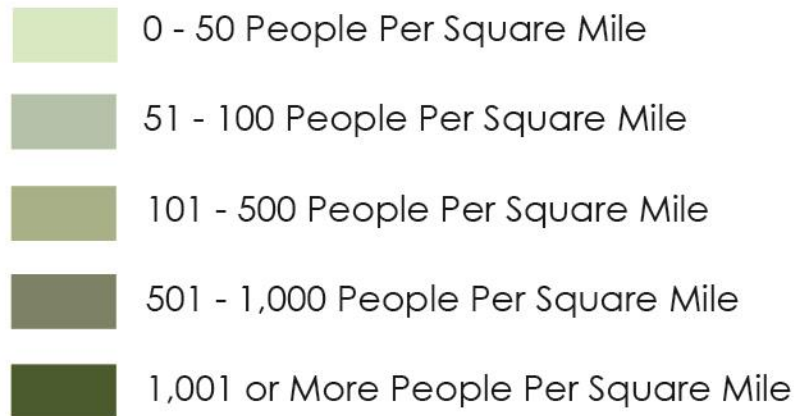
POPULATION DENSITY

Source: American Community Survey, 2018

 Person County

 City of Roxboro

Population Density Per Census Block Group

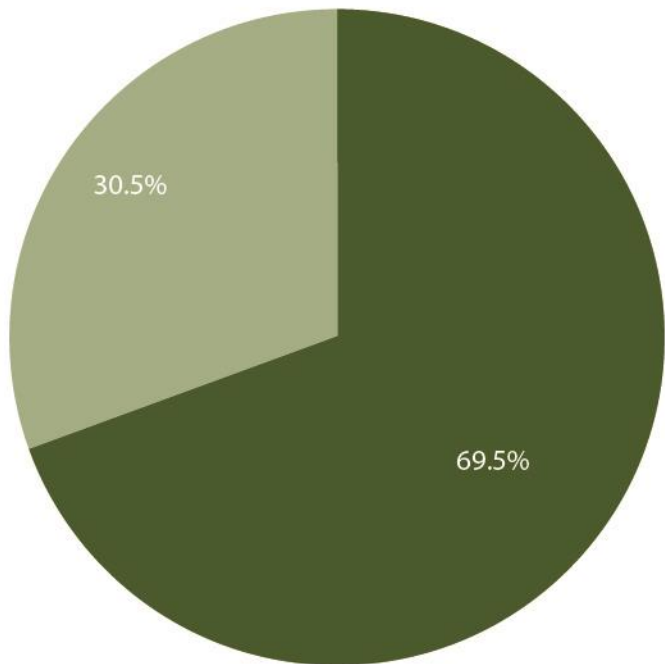


Background Research

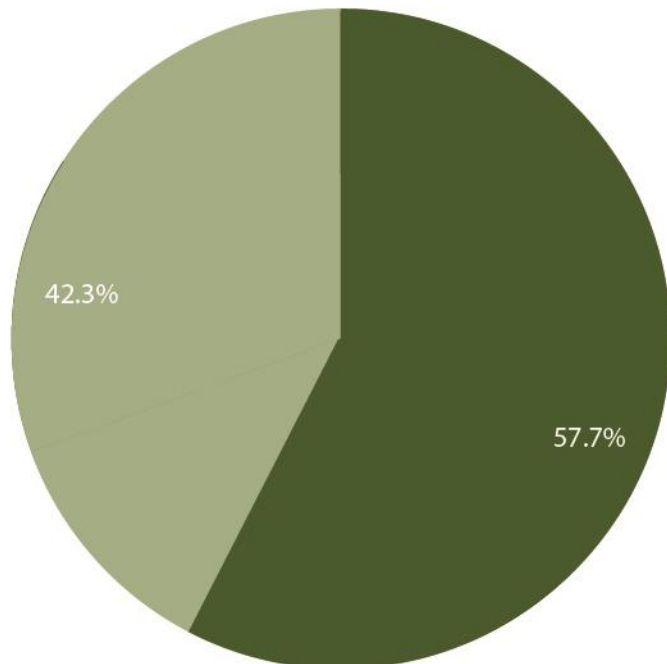
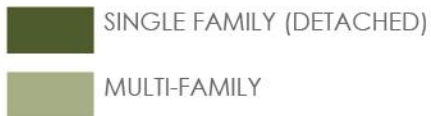
- Demographics
- Housing
- Economic Indicators
- Agriculture
- Land Cover and Natural Resources
- Existing Plan Review

HOUSING TYPES

Source: American Community Survey, 2018



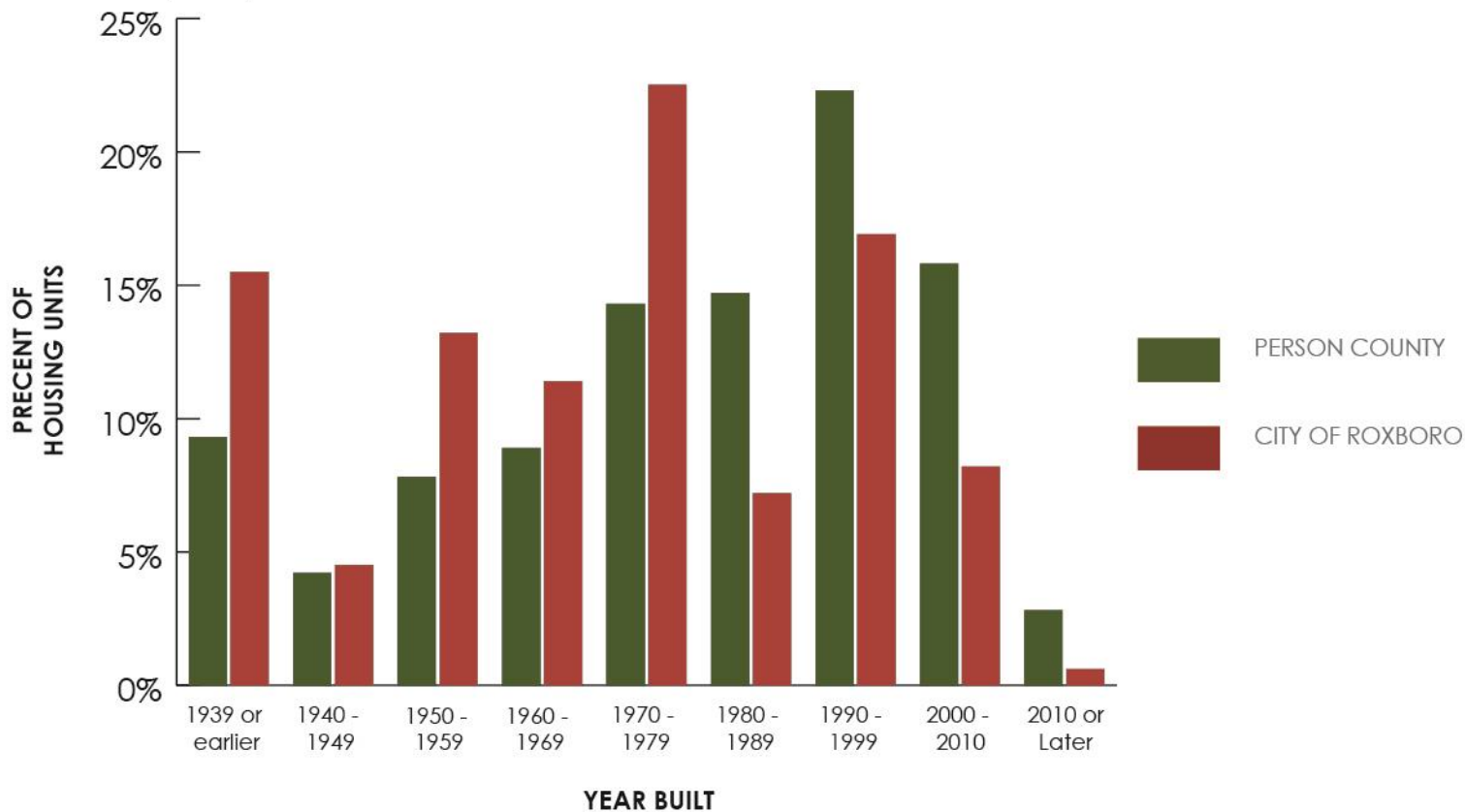
County



City

HOUSING AGE


Source: American Community Survey, 2018



HOUSING DENSITY

Source: American Community Survey, 2018

 Person County

 City of Roxboro

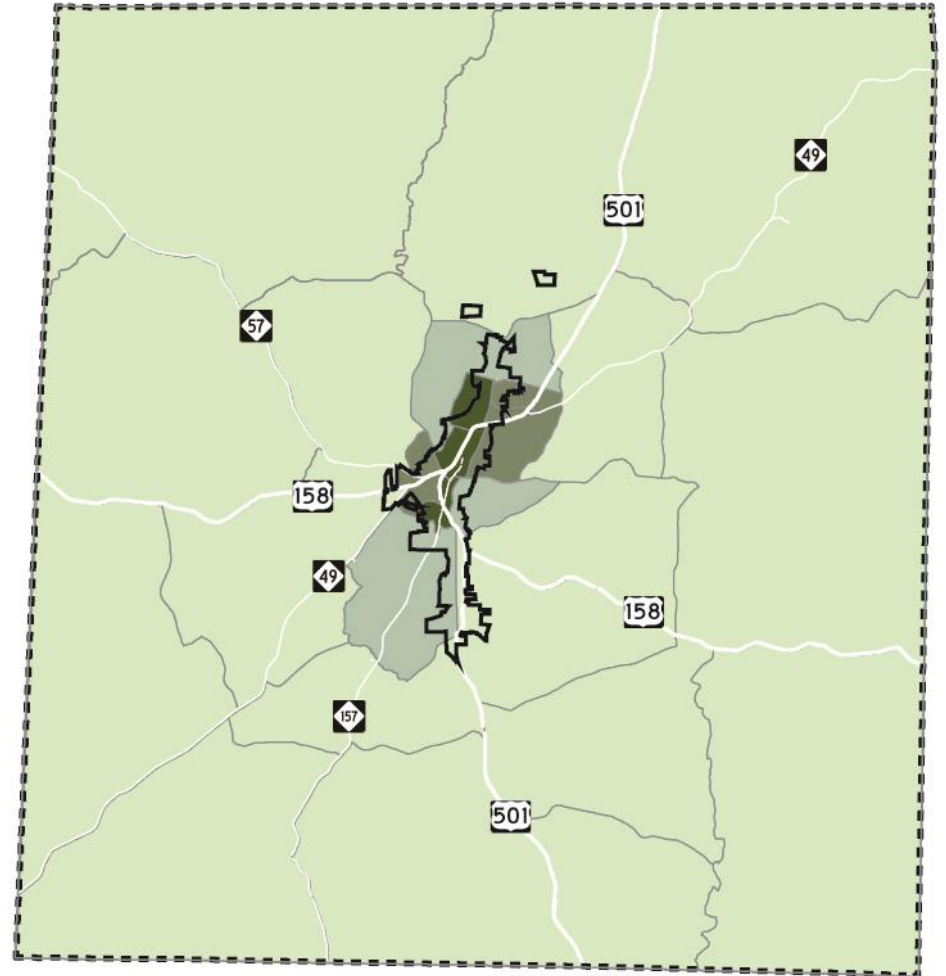
Housing Density By Census Block Group

 0 - 0.2 Units Per Acre

 0.3 - 0.5 Units Per Acre

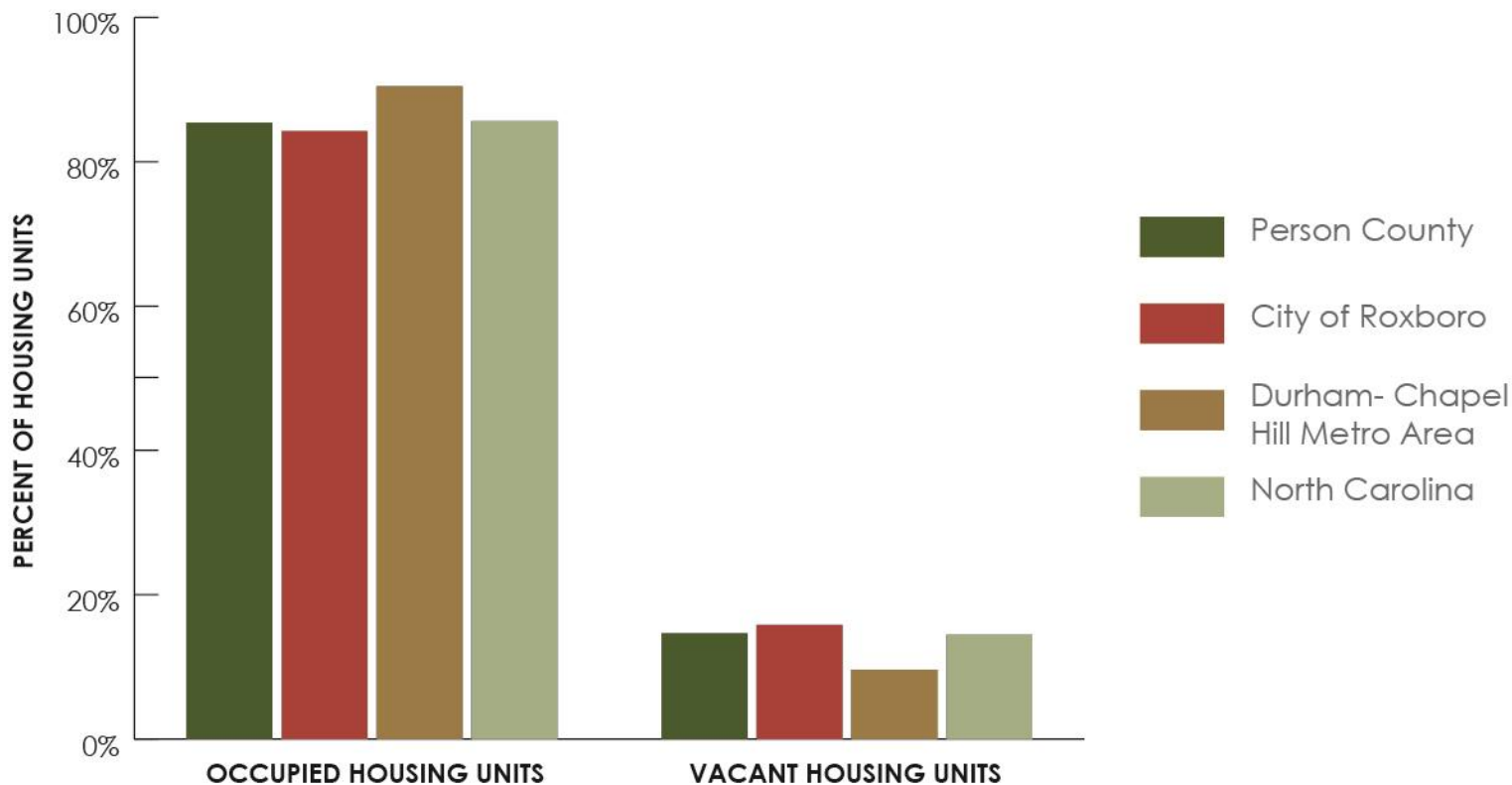
 0.6 - 1 Units Per Acre

 1 or More Units Per Acre



HOUSING OCCUPANCY

Source: American Community Survey, 2018



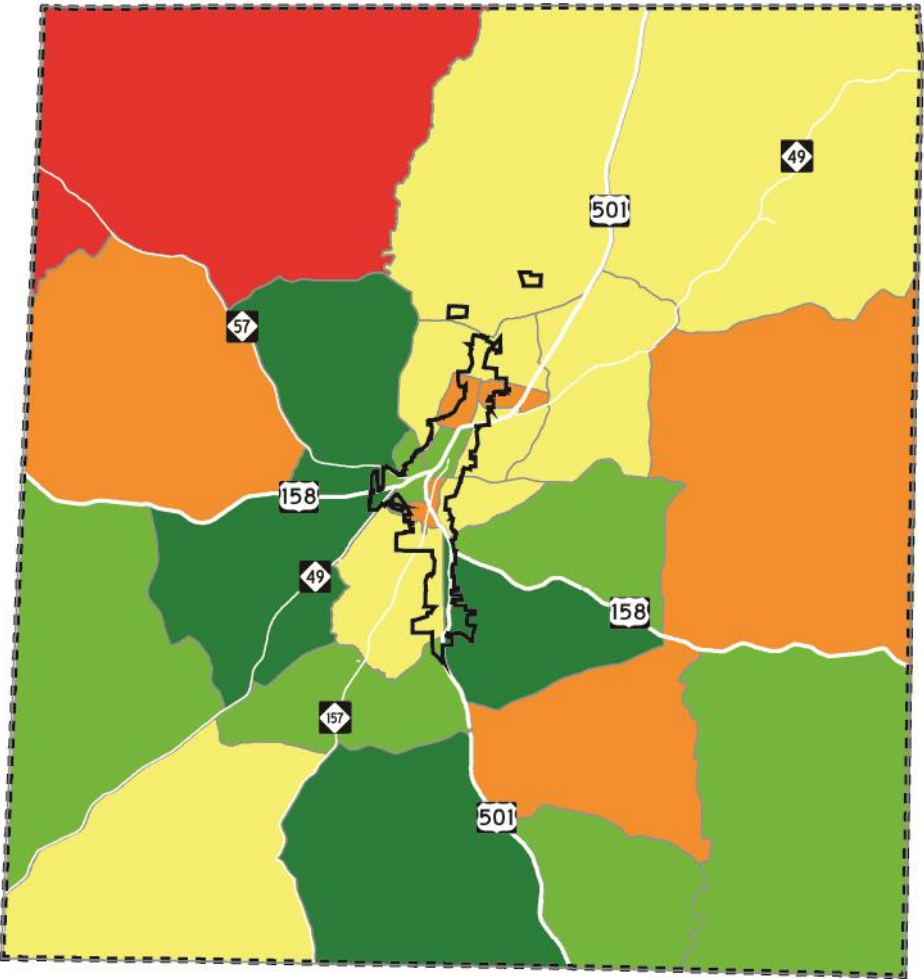
HOUSING VACANCY RATES

Source: American Community Survey, 2018

- Person County
- City of Roxboro
- Roads

VACANCY RATE PER CENSUS BLOCK GROUP

- 0 - 2%
- 3 - 10%
- 11 - 17%
- 18 - 30%
- 30% or Higher

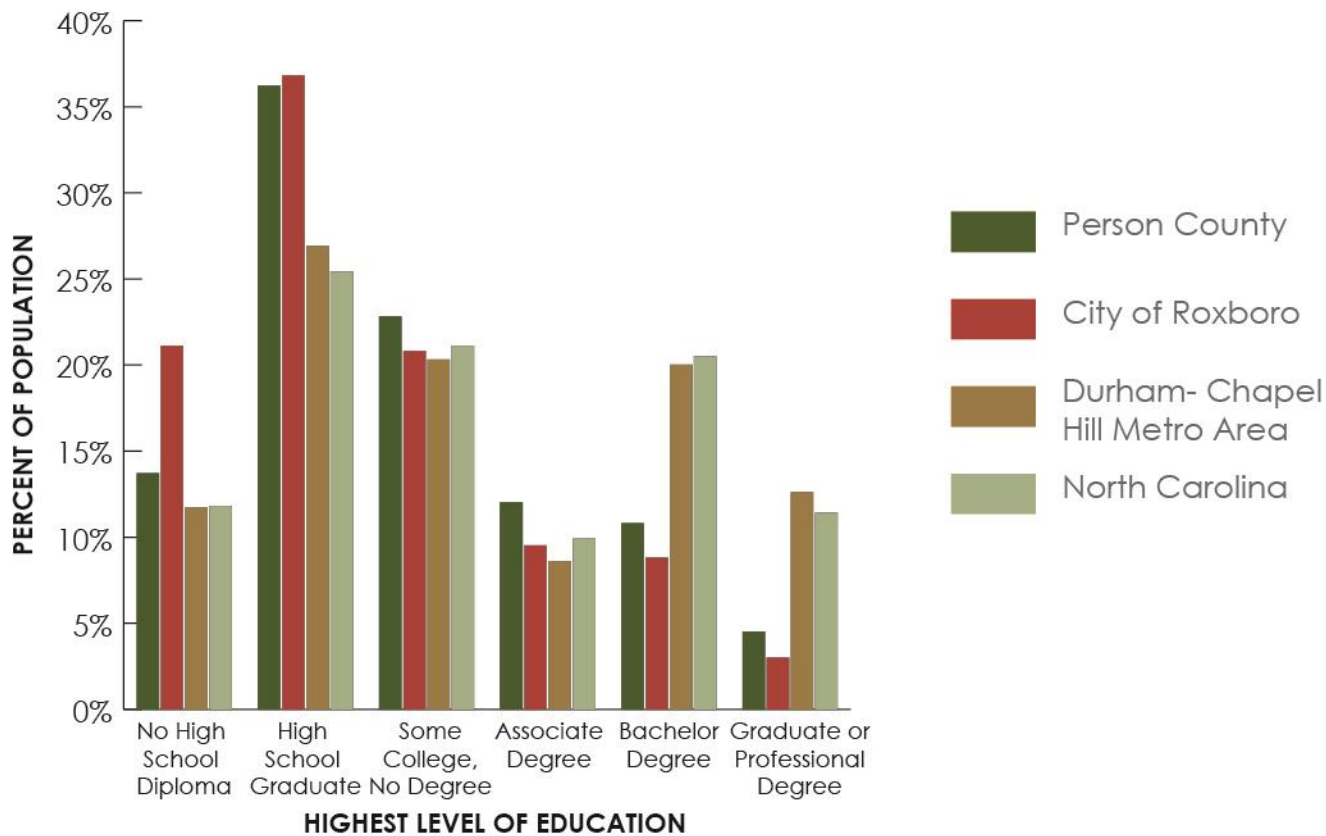


Background Research

- Demographics
- Housing
- Economic Indicators
- Agriculture
- Land Cover and Natural Resources
- Existing Plan Review

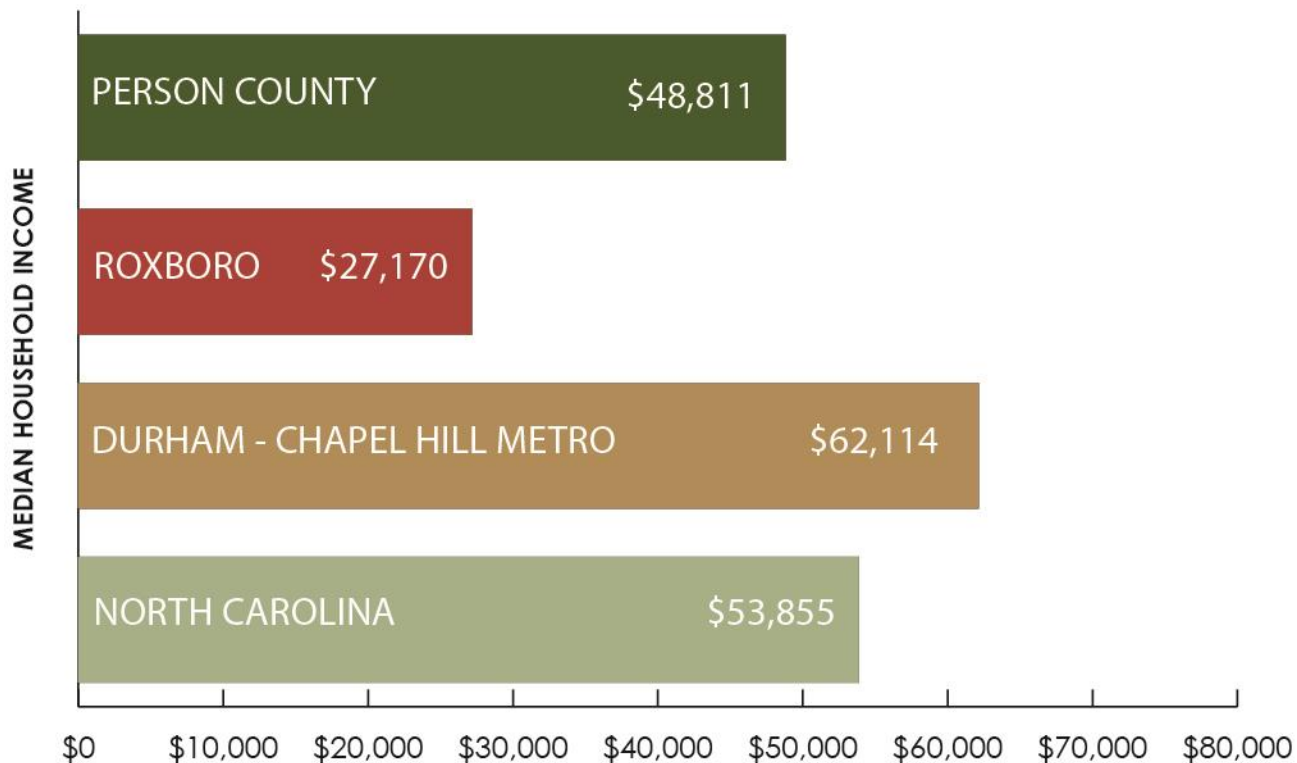
EDUCATIONAL ATTAINMENT

Source: American Community Survey, 2018



MEDIAN HOUSEHOLD INCOME

Source: American Community Survey, 2018



KEY INDUSTRY SECTORS

Source: American Community Survey, 2018

INDUSTRY SECTOR	NUMBER OF WORKERS IN COUNTY	PERCENT OF COUNTY WORKFORCE	NUMBER OF WORKERS IN ROXBORO	PERCENT OF CITY WORKFORCE
Agriculture	236	1.31%	14	0.43%
Construction	1,596	8.83%	410	12.59%
Manufacturing	2,781	15.39%	679	20.85%
Wholesale Trade	107	0.59%	10	0.31%
Retail Trade	1,868	10.34%	348	10.69%
Transportation, Warehousing, Utilities	1,094	6.10%	80	2.46%
Information	327	1.81%	6	0.18%
Finance, Insurance, and Real Estate	451	2.50%	60	1.84%
Professional, Scientific, Management, Administrative	1,449	8.02%	200	6.14%
Educational Services, Health Care, Social Assistance	5,210	28.84%	728	22.36%
Arts, Entertainment, Recreation, Accommodations	1,325	7.33%	517	15.88%
Other Services, Except Public Administration	801	4.43%	80	2.46%
Public Administration	820	4.54%	124	3.81%

ANNUAL PRIVATE EMPLOYMENT LOCATION QUOTIENTS

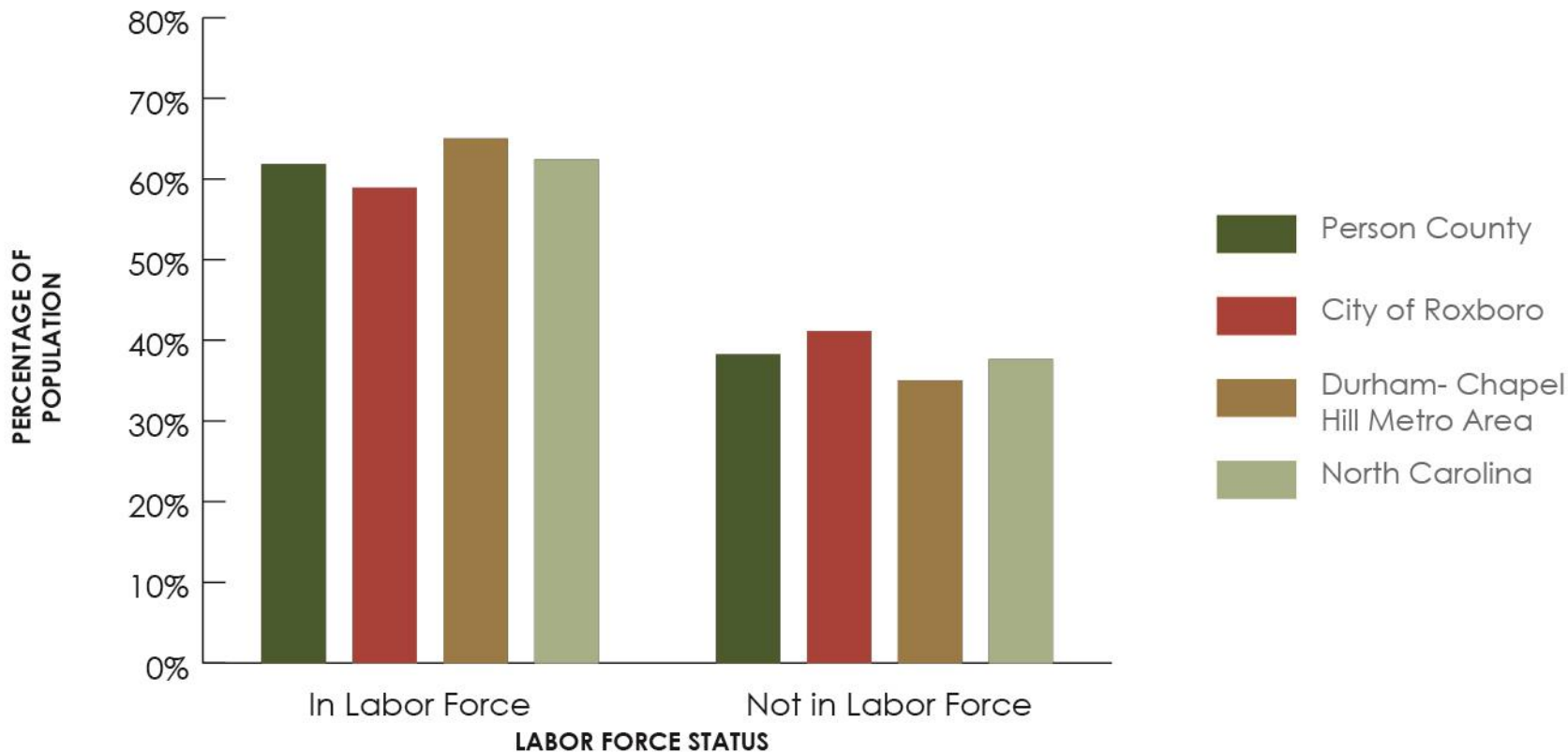
Source: Bureau of Labor Statistics, Quarterly Census of Employment and Wages, 2018

NAICS CODE	LOCATION QUOTIENT
NAICS 11 Agriculture, Forestry, Fishing, and Hunting	1.19
NAICS 22 Utilities	9.88
NAICS 23 Construction	1.17
NAICS 31 - 33 Manufacturing	1.85
NAICS 42 Wholesale Trade	0.47
NAICS 44 - 45 Retail Trade	1.43
NAICS 48 - 49 Transportation and Warehousing	0.17
NAICS 51 Information	0.28
NAICS 52 Finance and Insurance	0.50
NAICS 53 Real Estate and Rental and Leasing	0.31
NAICS 54 Professional and Technical Services	0.39
NAICS 55 Management of Companies and Enterprises	0.40
NAICS 56 Administration and Waste Services	0.70
NAICS 61 Educational Services	0.84
NAICS 62 Health Care and Social Assistance	0.95
NAICS 71 Arts, Entertainment, and Recreation	0.55
NAICS 72 Accommodation and Food Services	0.97
NAICS 81 Other Services, Except Public Administration	0.83

- Utilities
- Manufacturing

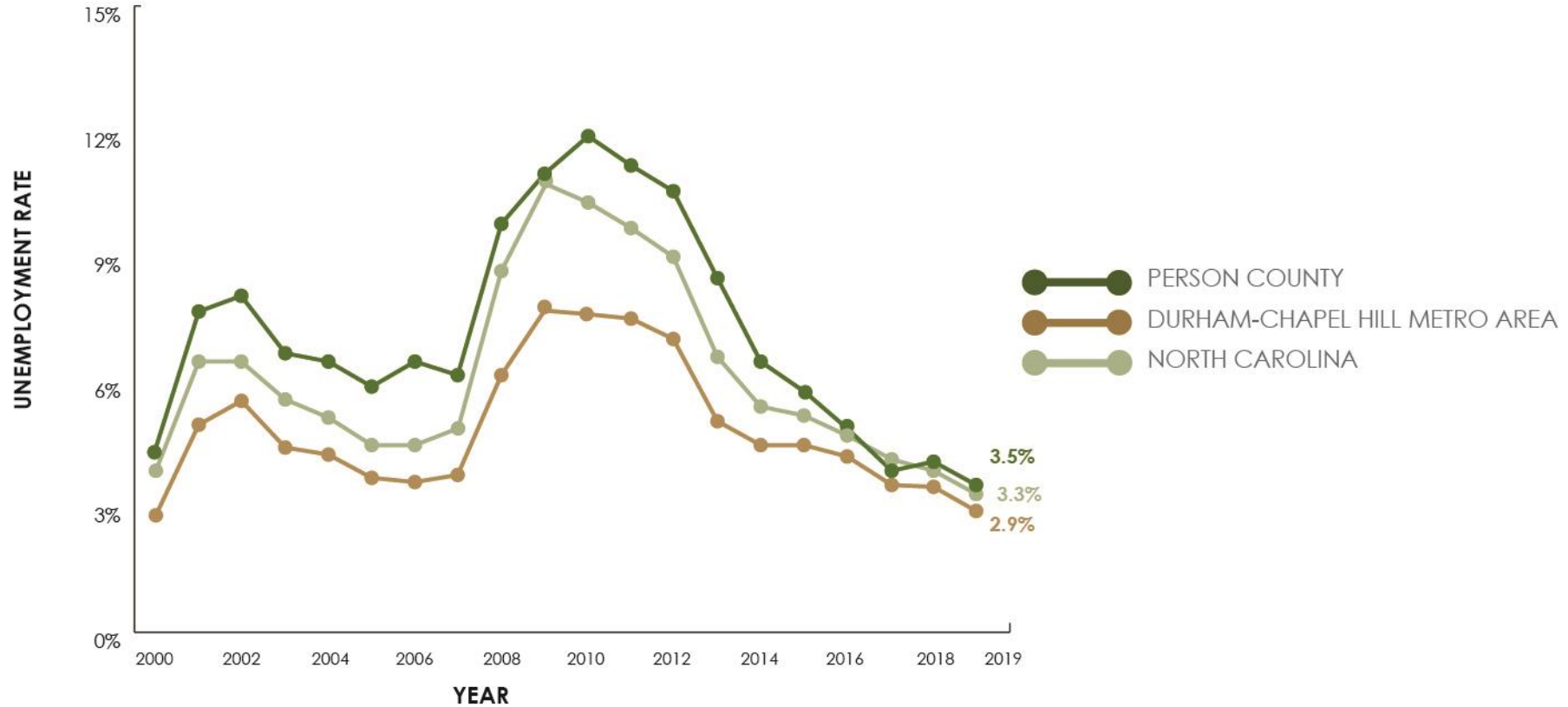
LABOR FORCE PARTICIPATION

Source: American Community Survey, 2018



UNEMPLOYMENT RATES

Source: Federal Reserve Bank of St. Louis Economic Research Data



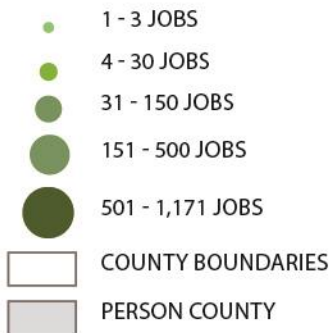
COMMUTING PATTERNS

Source: American Community Survey, 2017

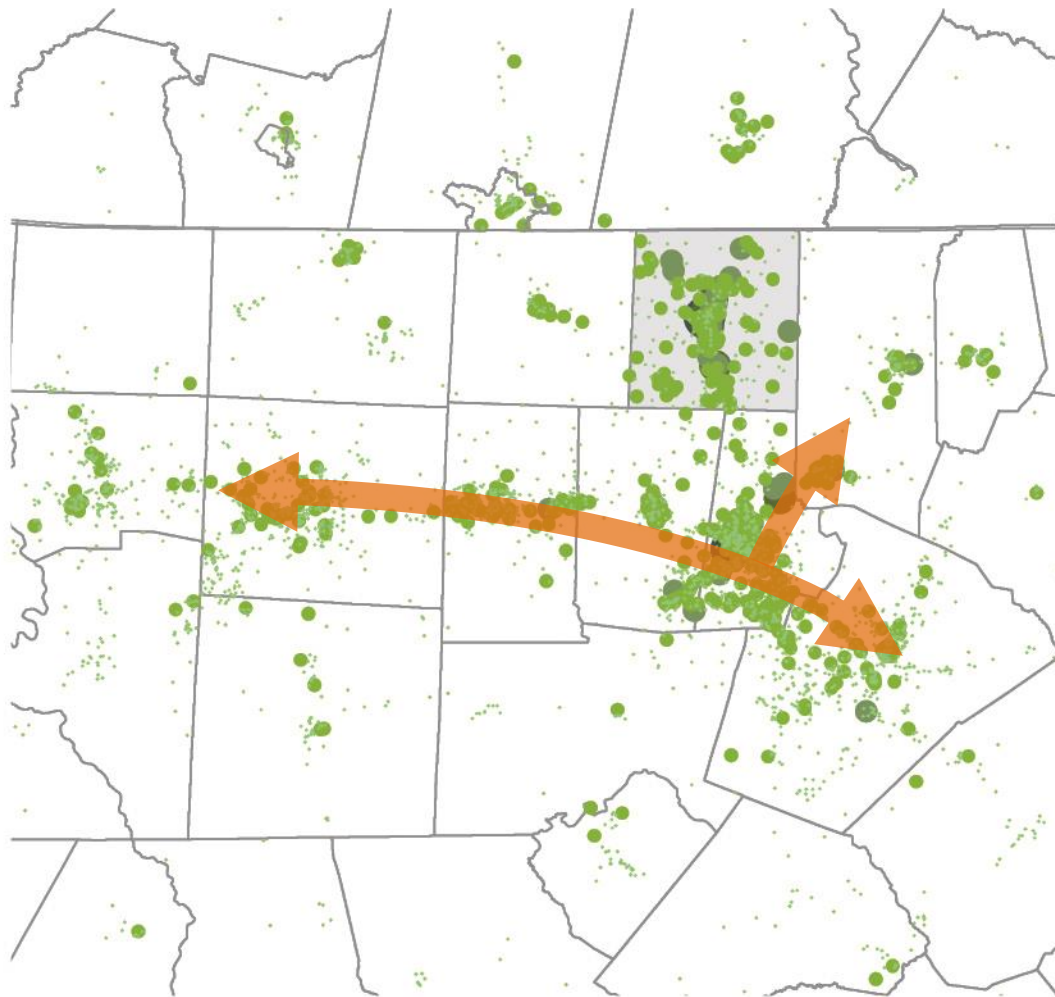


RESIDENTS' WORK LOCATIONS

Source: American Community Survey, 2017

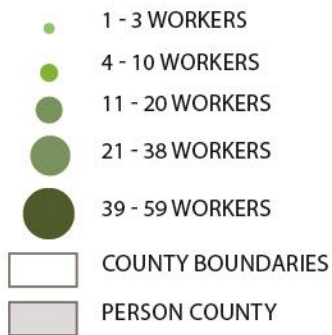


TOTAL ALL JOBS	COUNT	PERCENT
Less than 10 Miles	4,333	26.3%
10 to 24 Miles	4,093	24.8%
25 to 50 Miles	4,328	26.3%
Greater than 50 Miles	3,726	22.6%

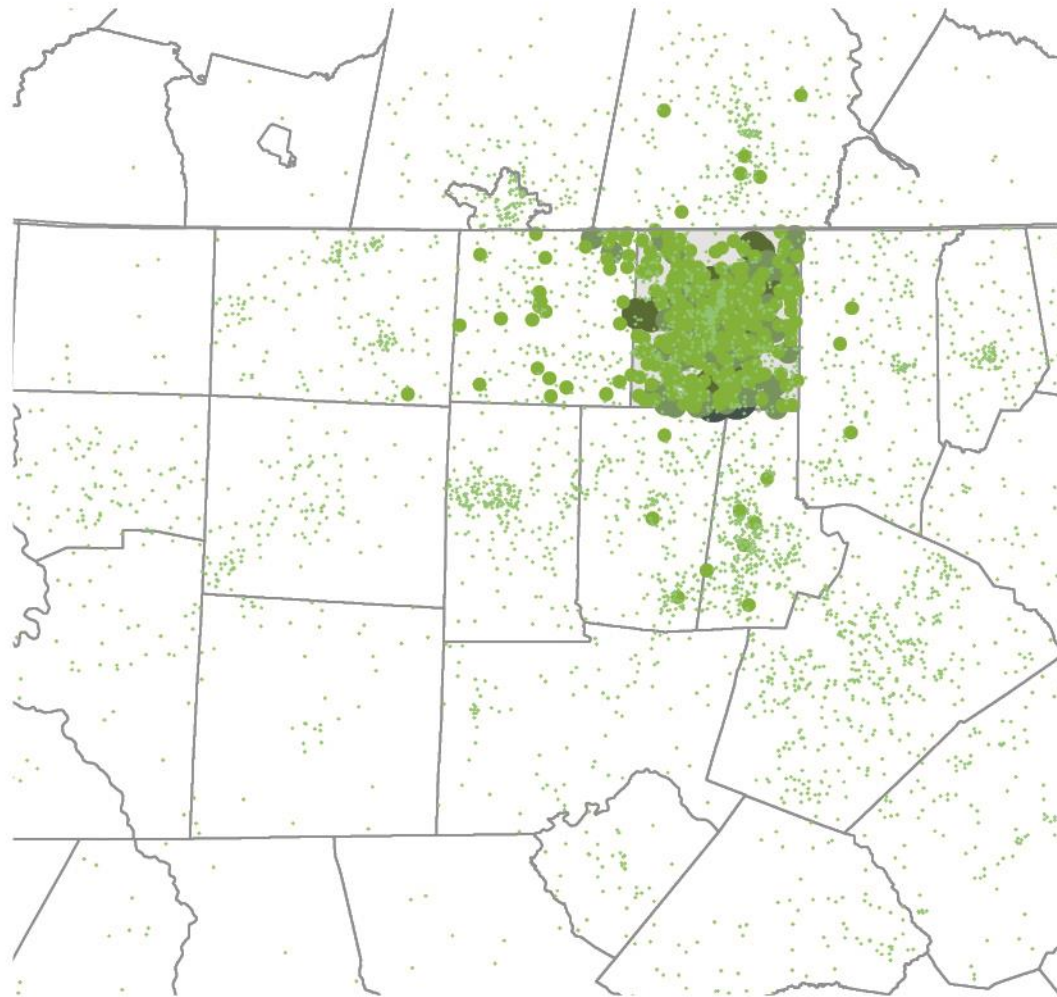


WORKER'S HOME LOCATIONS

Source: American Community Survey, 2017

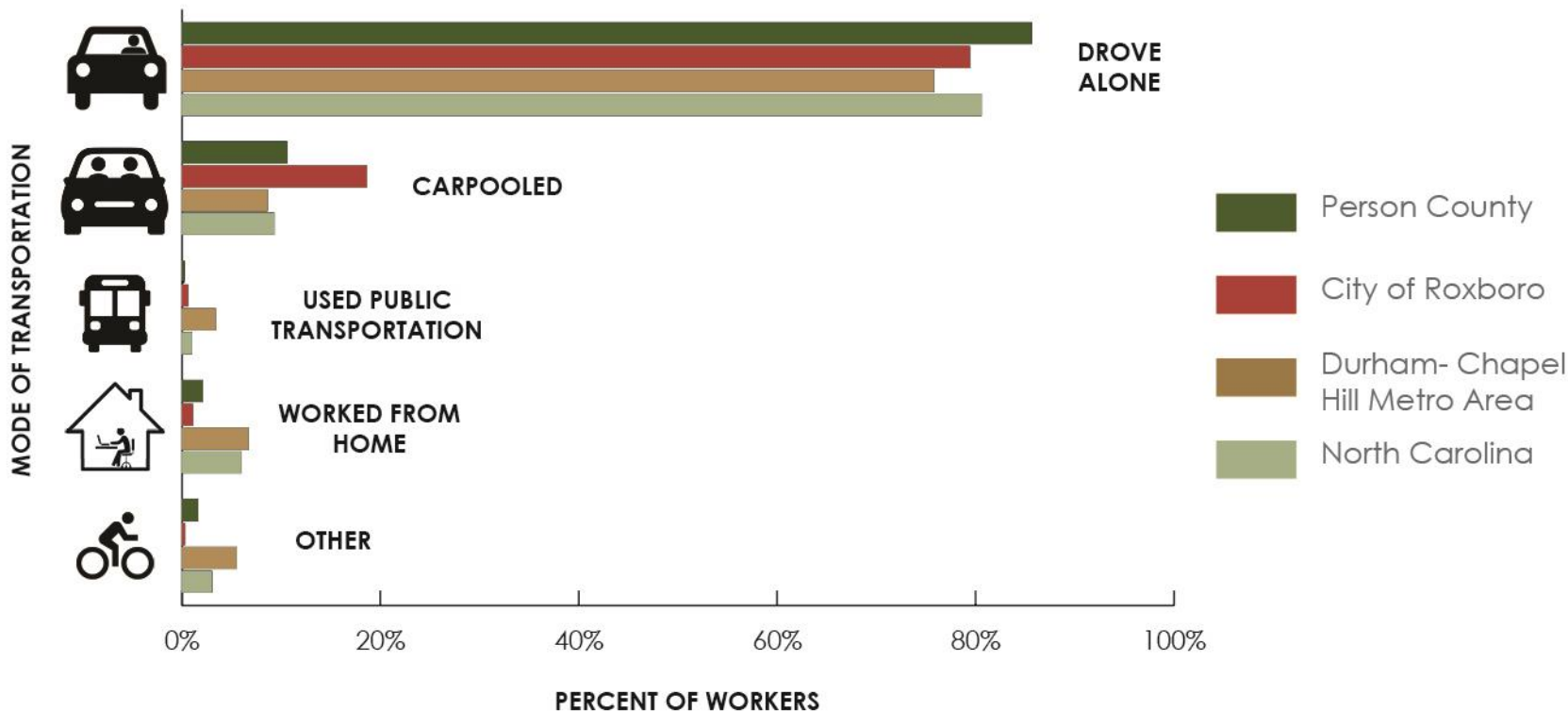


TOTAL ALL JOBS	COUNT	PERCENT
Less than 10 Miles	4,335	43.4%
10 to 24 Miles	1,926	19.3%
25 to 50 Miles	1,821	18.2%
Greater than 50 Miles	1,906	19.1%



MEANS OF TRANSPORTATION TO WORK

Source: American Community Survey, 2018



Background Research

- Demographics
- Housing
- Economic Indicators
- Agriculture
- Land Cover and Natural Resources
- Existing Plan Review

Agriculture

- Total number of farms is stable with a slight increase of +5% since 2002.
- Total land in farms is just over 82,000 acres; a -14% decline since 2002.
 - NC ranked 2nd in percent of agricultural lands converted ('01 – '16)
- Average farm size is down -17% from 254 acres in '02 to 209 acres in '17.

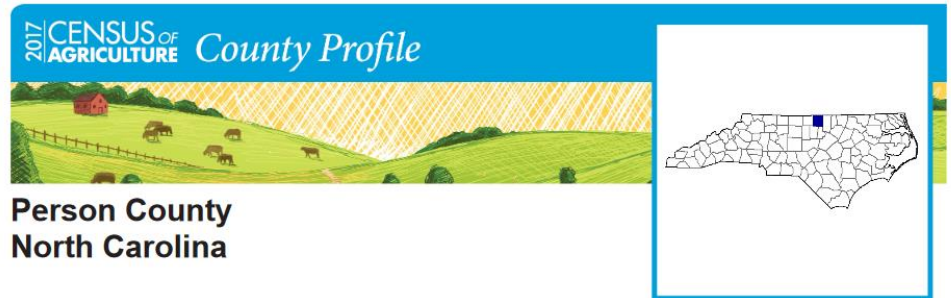


Agriculture

- Market value down -4% and net cash income down by -9% since 2012
- Crops accounted for 88% of total sales
 - Tobacco top crop in total sales; followed by: grains, beans and peas
 - Cropland - Soybeans 15,000 acres; Tobacco only 5,000 acres
- Livestock, poultry, and products 12% of total sales
 - Main inventory: 7,000 cattle/calves; 3,200 hogs/pigs; 1,500 layers

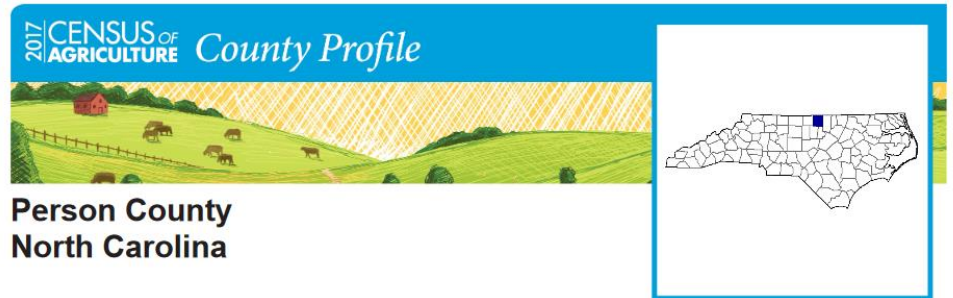
Agriculture

- Of the 82,194 acres in farmland for 2017:
 - Cropland represented 55% of land in farms
 - Pastureland represented 15% of land in farms
 - Woodland represented 25% of land in farms
 - Other (4%)



Agriculture

- 73% of farms have internet access
- 3% farm organically
- 12% sell directly to consumers
- 31% hire farm labor
- 97% are family farms

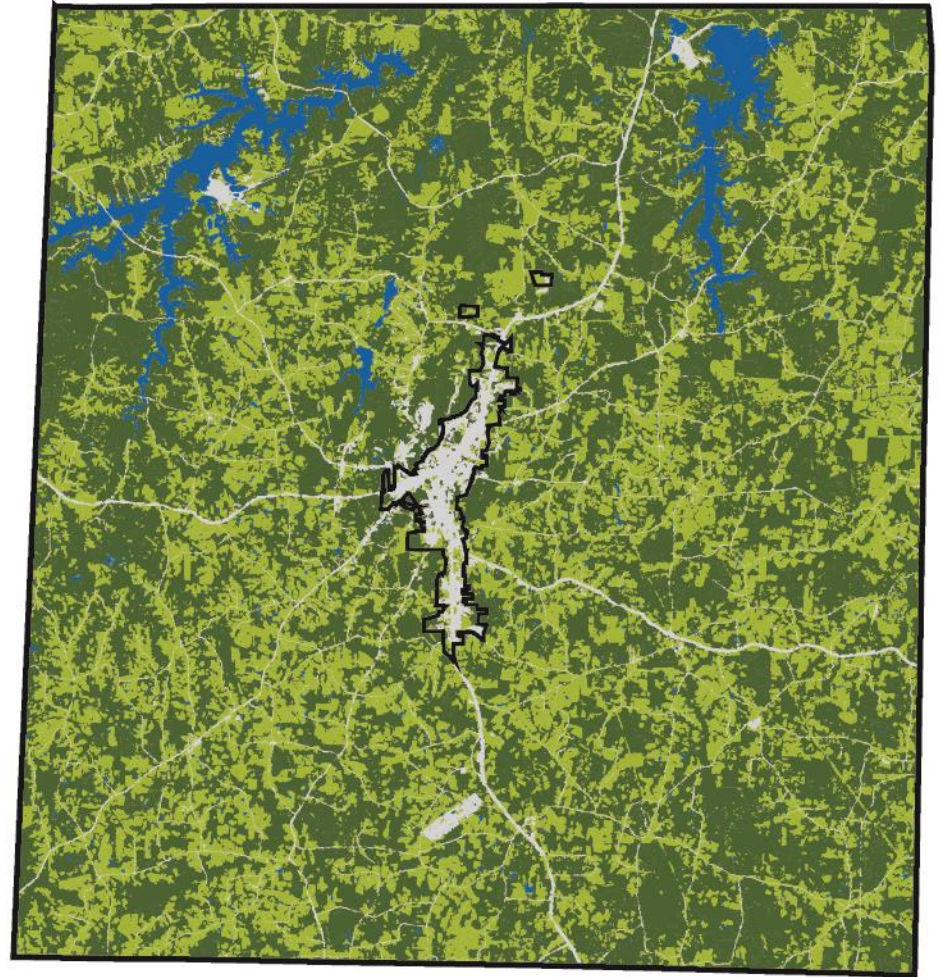


Background Research

- Demographics
- Housing
- Economic Indicators
- Agriculture
- Land Cover and Natural Resources
- Existing Plan Review

2009 LAND COVER

USDA National Agricultural Statistics Service



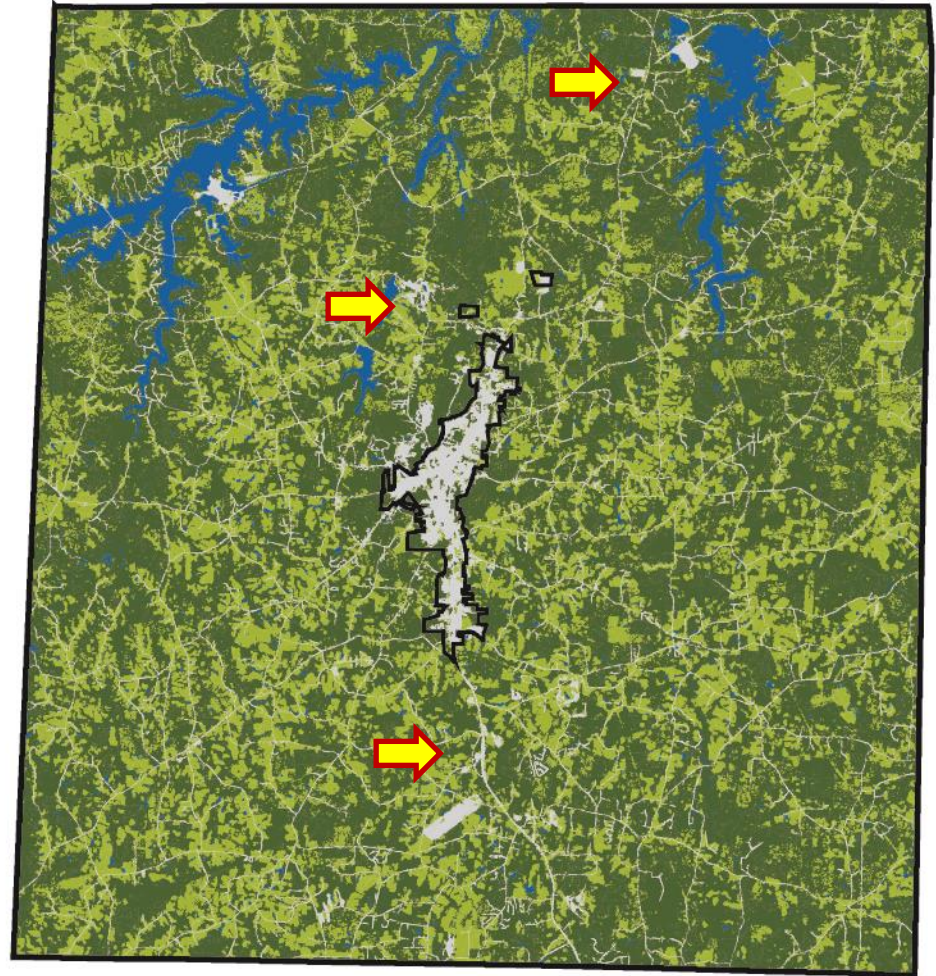
2019 LAND COVER

USDA National Agricultural Statistics Service



Most Change

- Agriculture/Pasture conversion to forested land
- Limited growth
 - Louisiana Pacific
 - Northwest of City Limits
 - South 501 Corridor




TOPOGRAPHY

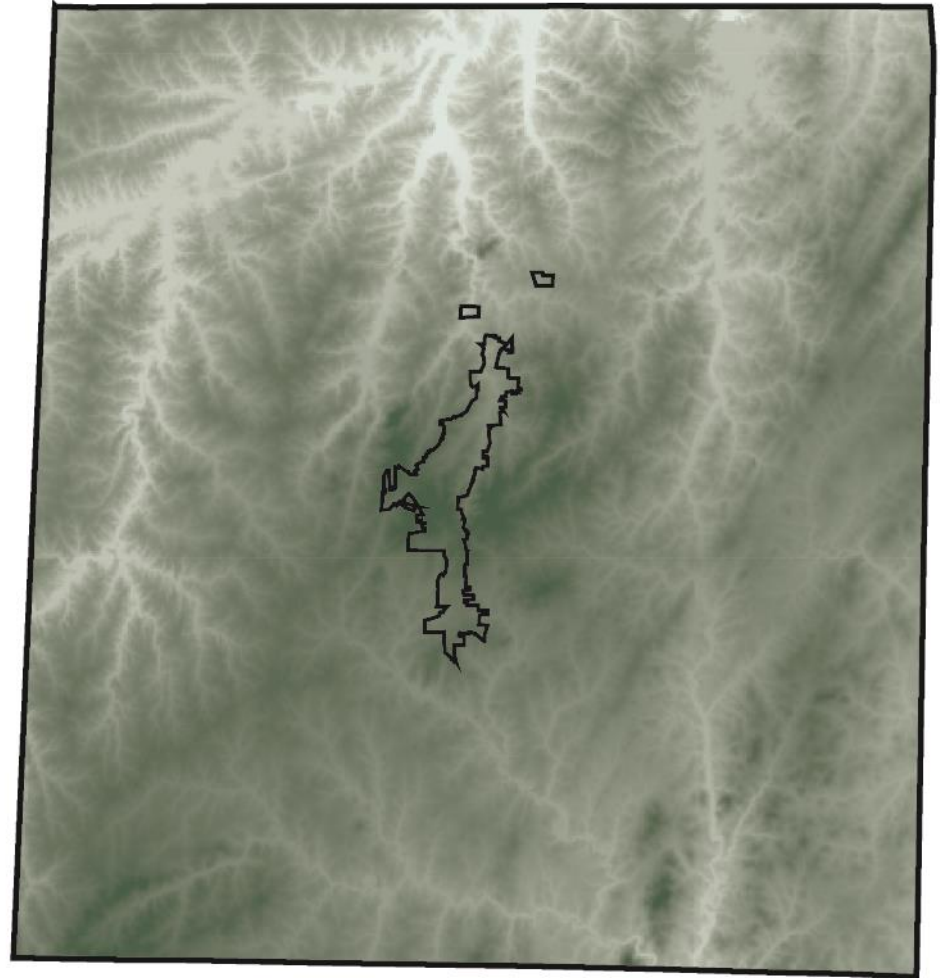
USDA National Agricultural Statistics Service

ELEVATION



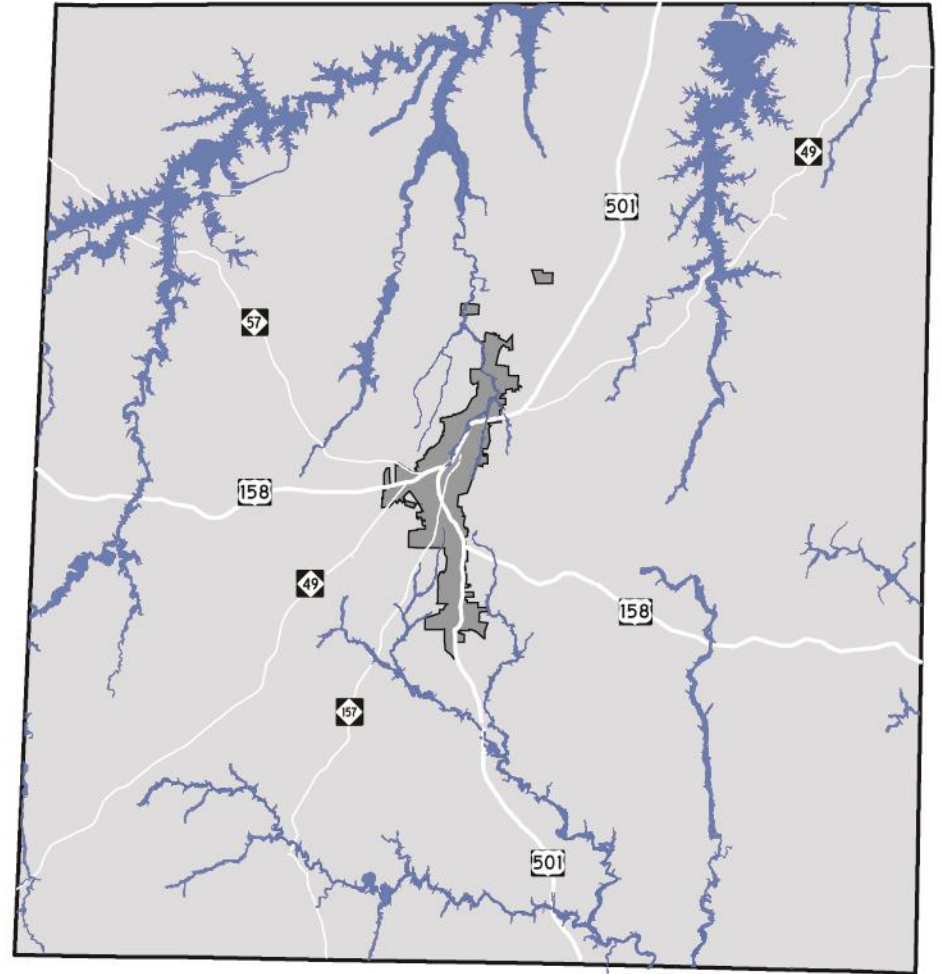
 Person County

 City of Roxboro



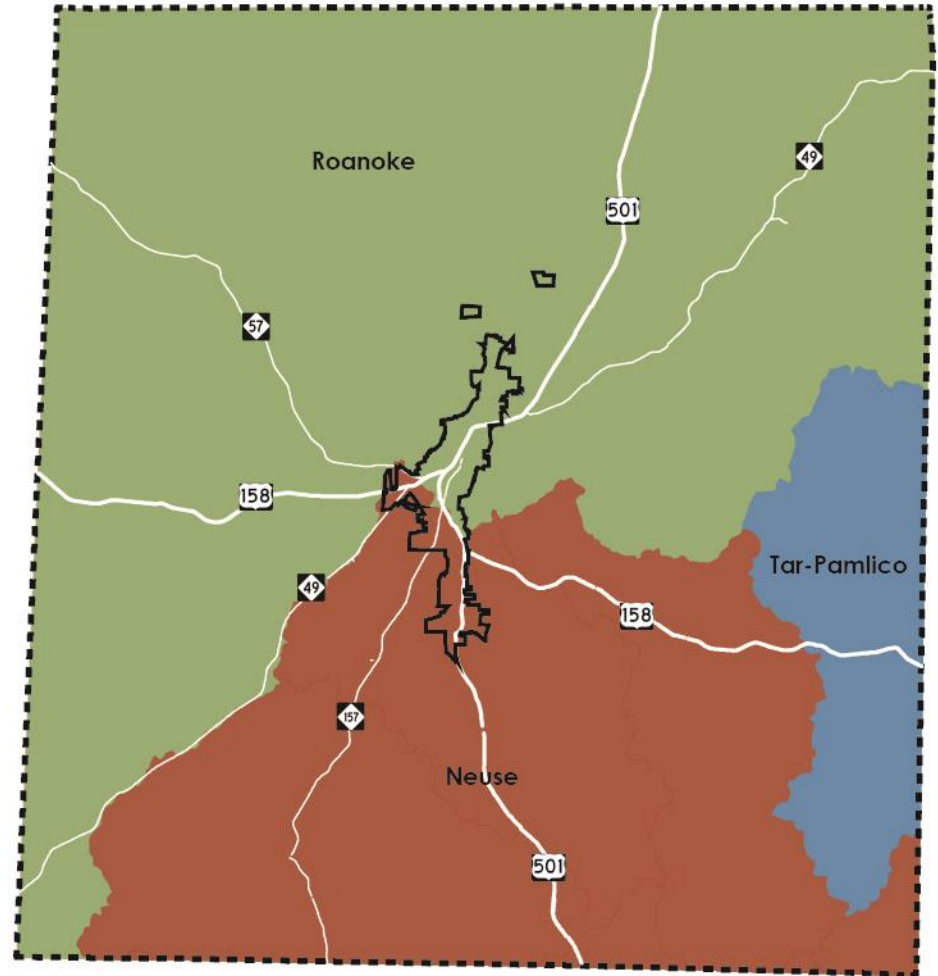
FLOODPLAIN

-  100 - Year Floodplain
-  Person County
-  City of Roxboro
-  Major Roads



WATERSHEDS

-  Roanoke River
-  Neuse River
-  Tar-Pamlico River
-  Person County
-  City of Roxboro
-  Major Roads



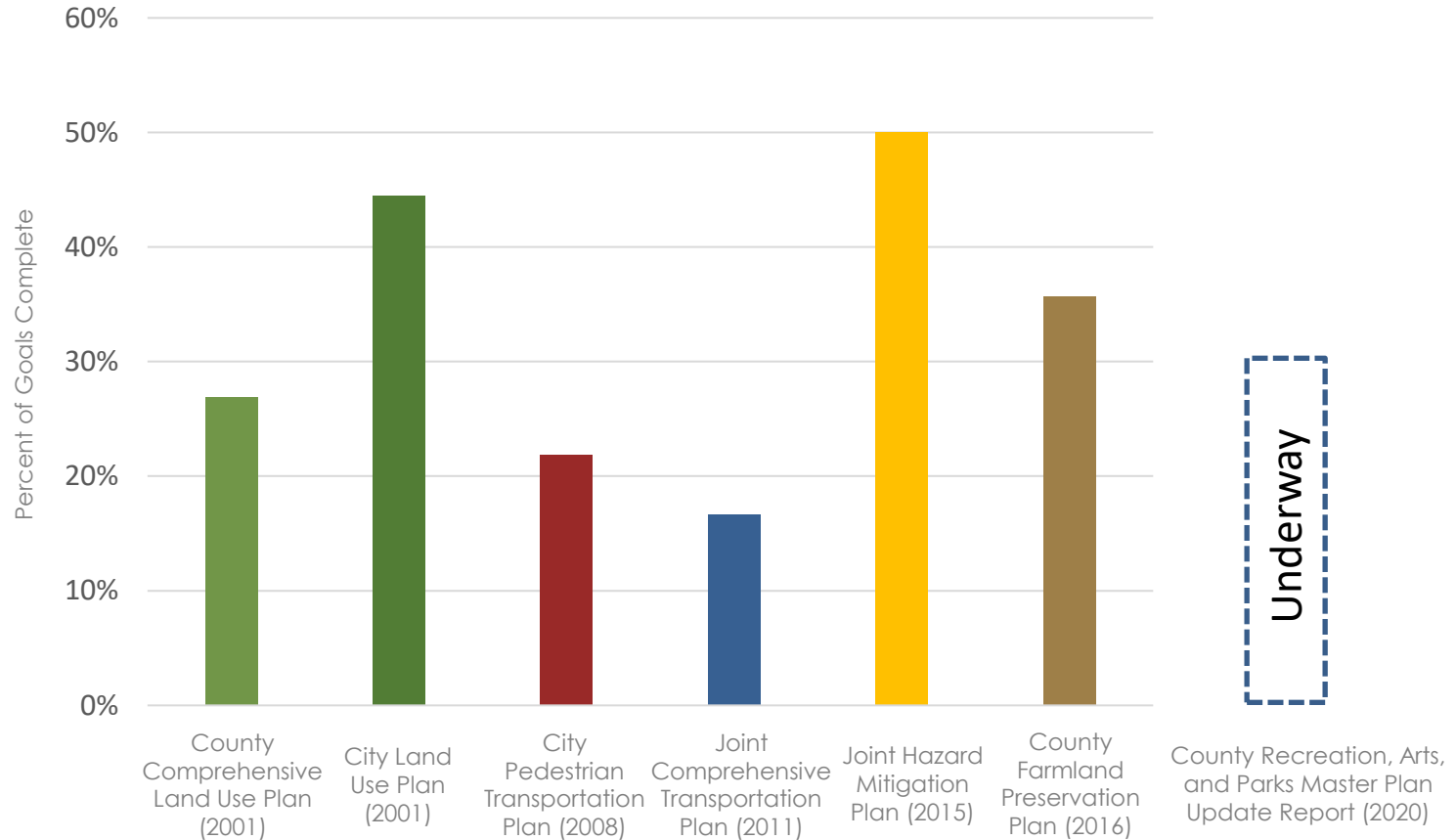
Background Research

- Demographics
- Housing
- Economic Indicators
- Agriculture
- Land Cover and Natural Resources
- Existing Plan Review

Existing Plan Review

- Person County Comprehensive Land Use Plan (2001)
- City of Roxboro Land Use Plan (2001)
- City of Roxboro Pedestrian Transportation Plan (2008)
- City and County Comprehensive Transportation Plan (2011)
- City and County Hazard Mitigation Plan (2015)
- County Farmland Preservation Plan (2016)
- County Recreation, Arts, and Parks Master Plan Update Report (2020)

Existing Plan Review



Background Research

Next Meeting

- Utilities
- Transportation
- Land Use & Zoning
- Parcel Development

Public Engagement

- Community Survey
- Online / Digital Outreach
- Public Meetings

Community Survey



- Open through August 7
- Available online (website/Facebook)
 - 550 responses so far!

Person County and City of Roxboro Joint Comprehensive Land Use Plan Survey

Introduction

Person County and the City of Roxboro are in the early stages of creating a Joint Comprehensive Land Use Plan ([Click here to learn more about the Plan](#)). This survey will serve as an important step in guiding the process so that we have a clear understanding of the ideas, perceptions, and concerns that residents and others with an interest in our community have about the future of the County and the City. Please take a few minutes to complete the survey and share your thoughts with us as we develop a forward-looking and action-oriented plan to guide the County and City over the next ten to twenty years. Please complete this survey before August 7, 2020.

1. Which of the following best describes you? Please select all that apply:

- I live in Unincorporated Person County (outside of the City of Roxboro)
- I live in the City of Roxboro
- I do not live in Person County or the City of Roxboro

Public Engagement

- Community Survey
- Online / Digital Outreach
- Public Meetings

Project Website



[Home](#) [Steering Committee](#) [Document Center](#) [Contact Us](#)

About the Planning Process

In 2001, Person County adopted its current Comprehensive Land Use Plan. In that same year, the City of Roxboro adopted its current Comprehensive Land Use Plan. This Joint Comprehensive Land Use Plan process is a collaborative effort by the City and County to update their plans together, considering ways they can work toward a shared vision. This Plan will establish a common vision, goals and overall objectives for the County and City with implementation strategies that are shared by each jurisdiction and some that are specific to each jurisdiction to implement the shared vision.



The Comprehensive Land Use Plan establishes the "blueprint" or "roadmap" for the future of the County and City with a bold, clear, vision and focused goals. The Plan looks at past and current development trends, previously approved plans, demographic and economic data, and community perceptions, in order to prioritize methods to fulfill the County's and City's vision for the future. The Plan is comprised of goals and strategies that provide a framework for decision-making and the allocation of resources as they relate to long-term development. It builds upon existing assets while taking advantage of opportunities for improvement and growth. The Plan is implemented over time through annual budgeting, departmental work programs, zoning decisions, and development projects. While local governments must have a comprehensive land use plan / comprehensive plan as condition of adopting and applying zoning regulations in North Carolina, the Comprehensive Land Use Plan is not a zoning or regulatory document.

Take the Survey!

[Click here](#) to complete the survey.

The County and City encourage participation from the entire community throughout the planning process. Please take the survey and share it with your friends and neighbors. Then, come back and visit this site to review background information and learn about opportunities to attend online presentations and meetings about the Joint Comprehensive Land Use Plan. Thank you for participating!



www.PlanPCR.com

- 315 Unique Page Views

Facebook Page

The screenshot shows the Facebook page for 'Person County / City of Roxboro Joint Comprehensive Land Use Plan'. The page header includes the Facebook logo, a search bar, and a 'Log In' button. The profile picture is a circular logo with the letters 'PR' in green and white. The cover photo features a large 'PR' logo and the text 'Person Roxboro Joint Comprehensive Land Use Plan'. Below the cover photo are buttons for 'Like', 'Share', 'Suggest Edits', and 'Send Message'. The main content area shows a post from 'Person County / City of Roxboro Joint Comprehensive Land Use Plan' with the text: 'PERSON COUNTY / CITY OF ROXBORO COMMUNITY SURVEY NOW OPEN: Person County and the City of Roxboro have recently begun working together to prepare a Joint Comprehensive Land Use Plan to guide future growth and development. Please take a few minutes to lend your voice to this important effort by completing the survey linked in this post. To learn more about the plan, visit www.PlanPCR.com and follow our Facebook page for updates as the process moves forward.' Below the post is a survey link from 'SURVEYMONKEY.COM' titled 'Person / Roxboro Joint Comprehensive Land Use Plan Survey' with a 'Learn More' button. The right sidebar contains sections for 'No Rating Yet', 'About' (with links to contact via Messenger and website), 'Page Transparency', and language options.

@PlanPCR

- 3,500 people reached to date
- 650 post clicks
- 4,700 total impressions

Public Engagement

- Community Survey
- Online / Digital Outreach
- Public Meetings

Public Kickoff

- Public Kickoff for the Project (Month of September)
 - Press release to announce when presentations will become live
 - Joint video message from Commissioners Chair & Mayor
 - Pre-recorded presentation(s)
 - Joint message, introduction to the project, survey results, and background research
 - Ability to provide comments online and/or in writing
 - Presentations available online for the remainder of the project

Future Public Engagement

- Future public input meetings :
 - 3 Topic/Focus Area Workshops (October - December / TBD)
 - Final format to be determined
 - Strategies for digital and in-person meetings
 - Public Meeting to Review Draft (February / TBD)

Upcoming Steering Committee Meetings

- **August**
 - Hold Meeting on August 26th at 2pm
 - Final Preparation/Discussion of September public kickoff
 - Review Additional Background Research & Survey Results
 - Identify Meeting Topics/Focus Areas for October/November
 - Discuss format for Topic/Focus Area meetings
- **November / TBD**
 - Steering Committee Update

Person County & City of Roxboro

Joint Comprehensive Land Use Plan

