



MACKAY WHITSUNDAY

ENHANCED EXTENSION COORDINATION

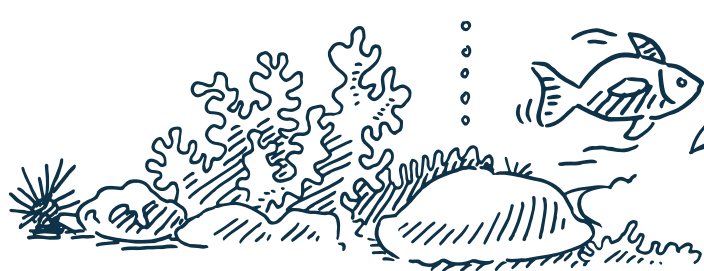
| **Summary**



FUNDED THROUGH THE QUEENSLAND GOVERNMENT
REEF WATER QUALITY PROGRAM

Queensland
Government

ENHANCED EXTENSION COORDINATION IN GBR PROJECT



THIS PROJECT SUPPORTS
OUR PRIMARY PRODUCERS TO
ACHIEVE REEF 2050 WATER
QUALITY TARGETS

The **Enhanced Extension Coordination in GBR Project** is operating in six GBR Natural Resource Management regions in Queensland. The Mackay Whitsunday Regional Extension Coordinator is delivering the project in partnership with the regional cane and grazing extension working groups to improve extension services supporting the cane and grazing industries in the Mackay Whitsunday region.

SOME KEY PROJECT OUTCOMES:



- Enhanced communication, coordination and planning
- A Community of Practice to coordinate extension delivery
- A framework to co-design and implement effective collaboration
- Empowering local decision making
- Improving extension officers' skills and capacity
- New ways of working together

BENEFITS...

FOR GRAZIERS & GROWERS:

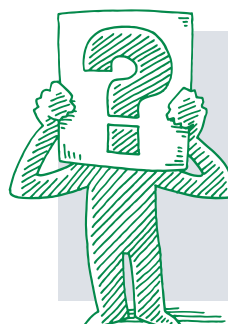
- ✓ Enhanced delivery of extension services
- ✓ More coordinated and effective support for growers and graziers
- ✓ Better access to improved information and highly skilled extension officers
- ✓ Opportunities for Peer to Peer groups



Did you know funds have already supported 17 projects in the Mackay Whitsunday including improved pesticide management projects

FOR EXTENSION STAFF:

- ✓ Connection to regional extension networks
- ✓ Up-to-date information on project work, funding programs and opportunities to collaborate with colleagues
- ✓ Opportunities to be part of decision-making and coordinated program design
- ✓ Access to training and professional development opportunities and specialised expertise



Did you know funds have already supported eight training workshops for Extension Officers including Soil Health

REGIONAL EXTENSION PLAN

A Regional Extension Plan (REP) for cane and grazing was developed to improve coordination and collaboration in the Mackay Whitsunday extension network and more efficiently target delivery of agronomic extension advice to growers and graziers.

A collaborative approach will enhance local capacity and ensure these farmers can easily access information, technology and technical support. This enables farmers to make informed decisions around optimal farming practices to improve water quality and profitability of the their sector.



THE MACKAY WHITSUNDAY EXTENSION NETWORK

Growers and graziers have access to a wide range of extension providers including industry organisations, private consultants, agri-businesses, NRM organisations and government agencies. These organisations and bodies comprise the Mackay Whitsunday extension network. The Mackay Whitsunday Regional Extension Coordinator has developed a collaborative and coordinated approach to extension delivery in the Mackay Whitsunday

region through cane and grazing regional extension working groups. These groups includes partner organisations that either provide extension advice or manage water quality projects. These groups recognise that by working collectively together they can better service the needs of farmers and help them to improve farming practices, profitability and demonstrate associated benefits to water quality.

MACKAY WHITSUNDAY CANE REGIONAL EXTENSION GROUP

- Mackay Area Productivity Services • Sugar Services Proserpine • Plane Creek Productivity Services
- Canegrowers Mackay • Department of Agriculture and Fisheries • Farmacist • Reef Catchments
- Sugar Research Australia and Mackay Sugar.

MACKAY WHITSUNDAY GRAZING REGIONAL EXTENSION GROUP

- Reef Catchments • Department of Agriculture and Fisheries

PROJECTS FUNDED IN MACKAY WHITSUNDAY

All decisions on projects are made locally through a collaborative approach by extension providers.

PROJECT HIGHLIGHTS SO FAR:

- ✓ Supporting grower led water quality monitoring, communication and engagement in high priority cane catchments
- ✓ Supporting priority grazing group extension activities including the Grazing Forum / Field Day and Healthy Soils Symposium / Field Day with Reef Catchments
- ✓ Access and links to innovative practices, ideas and technology from other regions and industries
- ✓ Supporting existing and new Peer to Peer Farmer groups to increase their knowledge and skills



Peer to peer network members inspecting on-farm sediment basin at Jane Creek.

TRAINING AND CAPACITY BUILDING:

The Training Development Manager is providing training and capacity building to local extension providers by identifying and delivering regional needs and providing subsidies for participants on completion of courses.

Training for extension staff has included: facilitation and communication skills, soil health and behavioural science around practice change.

To find out more about the Mackay Whitsunday Regional Extension Plan and extension networks, please contact Phillip Trendell, the Mackay Whitsunday Regional Extension Coordinator based at the Department of Agriculture and Fisheries in Mackay.

Phillip.Trendell@daf.qld.gov.au or phone 07 4967 0604.

Photos courtesy of Reef Catchments

This program is funded by the Queensland Government Reef Water Quality Program and delivered by the Department of Agriculture and Fisheries with partner organisations: Cape York NRM, Terrain NRM, NQ Dry Tropics, Fitzroy Basin Association and Burnett Mary Regional Group.

