



# BOOK OF WISDOM<sup>©</sup>

AUTHOR - HARRY B JOSEPH (REVIVAL OF WISDOM)

# COPYRIGHT

**WORK TITLE: "THE BOOK OF WISDOM"**

**IS REGISTERED WITH UK COPYRIGHT SERVICE.  
MARKETING, RE-SALE, AND CLAIMING "THE  
BOOK OF WISDOM" WITHOUT CONSENT WILL  
RESULT IN VIOLATING THE LEGAL PROTECTION  
RIGHT, WHICH CAN RESULT IN LEGAL ACTION  
TOWARDS THE INDIVIDUAL.**

**AUTHOR: REVIVAL OF WISDOM**



**REVIVALOFWSIDOM**



**REVIVALOFWISDOM3**



**REVIVALOFWISDOM**

# INTRODUCTION

THE BOOK OF WISDOM IS A BOOK CONTAINING ESOTERICISM, OCCULTISM, SYMBOLISM, AND MOST IMPORTANTLY, SYNCRETISM. SYNCRETISM IS THE METHOD THAT I, REVIVAL OF WISDOM, HAVE USED TO SYNC/COMBINE ALL FIELDS OF KNOWLEDGE. SYNCRETISM UNITES ALL SUBJECTS OF MATTER INTO ONE HOLY SCIENCE. ALL THINGS COME FROM THE ONE, THEREFORE ALL THINGS ARE ONE. THE WORLD WE LIVE IN IS A FRACTIONAL WORLD WHERE ALL THINGS CONTAIN ALL THINGS FROM A MICRO AND MACRO PERSPECTIVE.

THE AVERAGE INDIVIDUAL OF TODAY'S DAY AND AGE IS LIVING THEIR LIFE LEFT HEMISPHERE DOMINANT. THE LEFT HEMISPHERE OF THE BRAIN BREAKS DOWN AND ANALYZES THE RIGHT HEMISPHERE'S UNITED PERCEPTION OF REALITY INTO SEPARATE FRAGMENTS SO THAT WE CAN MANIPULATE AND UNDERSTAND THINGS LOGICALLY. TO GAIN A FULL UNDERSTANDING OF THE INFORMATION THIS BOOK PRESENTS, YOU MUST FIRST FREE YOUR MIND FROM THE INDOCTRINATIONS GIVEN BY THE EDUCATIONAL SYSTEMS WE WERE FORCED TO ATTEND TO AND, SECONDLY, TRY AND PERCEIVE REALITY AS ONE UNITED AND WHOLISTIC CREATION.

## NOTICE

**ALL OF THE IMAGES IN THIS BOOK HAVE BEEN EDITED, MANIPULATED, AND ARTIFICIALLY GENERATED TO AVOID ANY COPYRIGHT CLAIMS. EVERY IMAGE THE BOOK INCLUDES HAS BEEN CHANGED AND IS NOW CLASSIFIED AS "ARTWORK" UNDER THE COPYRIGHT OF THE AUTHOR OF THE BOOK OF WISDOM. NOT ONE OF THE IMAGES USED IN THIS BOOK IS BEING USED IN ITS ORIGINAL FORM.**

# LIGHT

GENESIS 1:3 "LET THERE BE LIGHT" WE LIVE INSIDE OF A LIGHTWAVE UNIVERSE WHERE ALL THINGS ARE CREATED OUT OF LIGHT. LOW-VIBRATING LIGHT TURNS INTO MATTER, HIGH-VIBRATING MATTER TURNS BACK INTO LIGHT. UNIVERSAL ONE BY WALTER RUSSEL: "GOD IS THINKING MIND. THE SUBSTANCE OR BODY OF GOD IS LIGHT". "THE ONE UNIVERSAL SUBSTANCE, A THINKING SUBSTANCE, COMPREHENSIVE AND DESCRIBABLE AND POSSESSED OF PRINCIPLES WHICH ARE FAMILIAR TO MAN THROUGH MANS OBSERVATION OF THE ONE UNIVERSAL SUBSTANCE IN CREATED THINGS. THE SUBSTANCE OF ALL CREATED THINGS IS LIGHT. THE ONE SUBSTANCE OF THINKING MIND IS ALL THAT EXISTS." "MIND IS EXPRESSED IN LIGHT".

# HUMAN HUE MAN

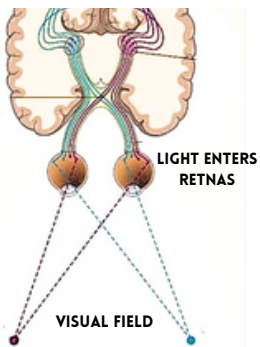
Which best defines a hue?

: the attribute of colors that permits them to be classed as red, yellow, green, blue, or an intermediate between any contiguous pair of these colors. red with an orange hue.

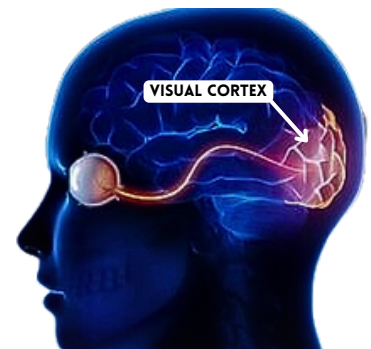
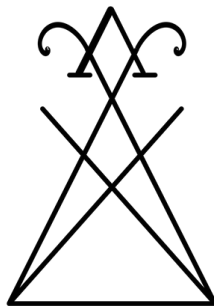
AS A HUE MAN, WE ARE AN ATTRIBUTE OF A COLOUR THAT PERMITS THEM TO BE CLASSED THAT SPECIFIC COLOUR. EACH INDIVIDUAL IS THE MIND, NOT THE PHYSICAL BODY. WITHOUT THE MIND THE PHYSICAL BODY/WORLD WOULD CEASE TO EXIST. THE MIND IS SPIRIT. THE MIND IS THE INTELLECT THAT MANIPULATES THE PHYSICAL BODY AND THE WORLD AROUND US. THE MIND IS LIKE A FREQUENCY TUNER, TUNING ITSELF INTO DIFFERENT FREQUENCIES. THE MIND EXISTS WITHIN THE MENTAL PLANE, WHICH IS SHARED BETWEEN ALL THE MINDS OF THE UNIVERSE. THOUGHTS ARE NOT CREATED BY THE INDIVIDUAL; THEY ARE RECEIVED BASED ON WHAT FREQUENCY OUR MIND IS SET TO. IF WE SET OUR MIND TO A SPECIFIC TOPIC, LIKE GENERATING WEALTH, FOR EXAMPLE, WE TUNE INTO THAT FREQUENCY IN THE MENTAL PLANE, AND WE WILL RECEIVE THOUGHTS ON HOW TO GENERATE WEALTH.

OUR MID IS GENERALLY OPERATING OFF ONE SPECIFIC FREQUENCY BASED UPON OUR DAILY THINKING PATTERNS. EVERY FREQUENCY IS A COLOUR. THEREFORE, OUR MIND IS MANIFESTING COLOURS WITHIN THE ASTRAL PLANE BASED UPON WHAT FREQUENCY OUR MIND IS GENERALLY OPERATING OFF. IF WE ARE CARRYING HATE IN OUR MIND, WE WILL BE GENERATING REDDISH COLOURS. THIS IS WHY THE WORD HUMAN MEANS AN ATTRIBUTE OF A COLOUR. WE SHOULD AIM TO BECOME VIOLET, THE HIGHEST VIBRATIONAL COLOUR WITHIN THE LIGHT SPECTRUM. WE ARE LIGHT BEINGS MANFESTED INTO PHYSICAL FORM.

## YOU DO NOT SEE INTO REALITY



SIGIL OF LUCIFER



LUCIFER THE LIGHT BEARER  
LUCIFER=LUCI  
LUCI IN LATIN MEANS LIGHT

THE SIGIL OF LUCIFER IS SHOWING YOU THE VISUAL FIELD OF THE EYES.

WE DO NOT SEE INTO THE EXTERNAL WORLD. LIGHT WAVES ENTER THE RETINAS, AND THEN THE IMAGE WE SEE IS PRODUCED IN THE VISUAL CORTEX LOCATED AT THE BACK END OF OUR BRAINS.

.THE VISUAL CORTEX IS THE PRIMARY CORTICAL REGION OF THE BRAIN THAT RECEIVES, INTEGRATES, AND PROCESSES VISUAL INFORMATION RELAYED FROM THE RETINAS

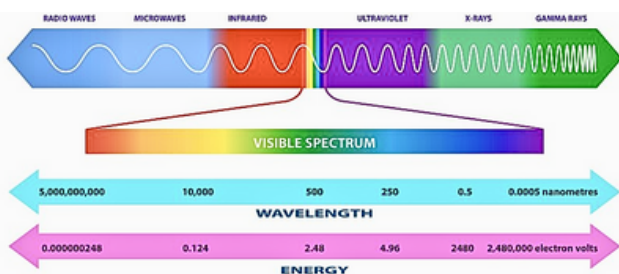
THE ANCIENT KEMETICS (EGYPTIANS) HAD A DEEP UNDERSTANDING OF THE FUNCTION OF REALITY AND THE BRAIN; THIS IS WHY IT IS REFLECTED IN THEIR SCULPTURES AS SHOWN ABOVE.

ELEMENT  
ELE MENT  
MENT=MIND

THE ELEMENTS ONLY EXIST WITHIN THE MIND. HUMANS ARE GOD MADE FLESH. WE ARE THE GOD IN SEPERATE BODIES. GOD IS MIND AND ALL THINGS EXIST IN THE UNIVERSAL MIND. GOD IS THINKING ALL THINGS INTO EXISTANCE.

EL=GOD  
ELEMENT=GODMIND

### ELECTROMAGNETIC SPECTRUM



about 0.0035 percent

The entire rainbow of radiation observable to the human eye only makes up a tiny portion of the electromagnetic spectrum – about 0.0035 percent. This range of wavelengths is known as visible light. 17 Oct 2018

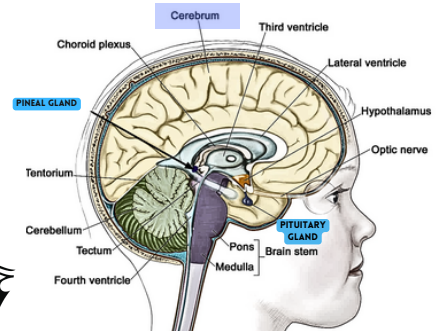
# CHRIST OIL

WHEN THE MOON ENTERS YOUR SUN SIGN (YOUR BIRTH ZODIAC SIGN), A PSYCHO-PHYSICAL OIL IS RELEASED FROM THE BRAIN DOWN THE SPINE TO THE SACRUM BONE. THIS SACRED FLUID MUST BE CARED FOR AND NOT DESTROYED BY ACIDIC FOODS AND LIQUIDS. OUR SEXUAL ENERGY/FLUIDS MUST BE RETAINED IF WE WISH TO RAISE THIS PSYCHO-PHYSICAL OIL BACK TO OUR BRAIN (HEAVEN). BY OPENING OUR CHAKRAS, PRESERVING OUR SEXUAL ENERGY, AND MAINTAINING THE CHRIST OIL, WE CAN USE THE POWER BEHIND THE SEXUAL ENERGY (KUNDALINI) TO RAISE IT UP FROM THE BASE OF THE SPINE BACK TO THE CROWN CHAKRA IN THE BRAIN.

BY AWAKENING THE SEVEN CHAKRAS AND RAISING THE KUNDALINI TO THE CROWN CHAKARA, NEW ENERGY PATHWAYS OPEN UP WITHIN THE BRAIN, WHICH FEELS LIKE YOUR HEAD BECOMES HOLLOW ON THE INSIDE. THE BRAIN UNDERGOES A REMODELLING PROCESS, EXPANDING ITS CAPACITY FROM M ROUGHLY 10% OF USAGE TO THE COMPLETE 100%. DORMANT AREAS OF THE BRAIN ARE UNLOCKED, SIGNALING NEW WAYS OF BRAIN FUNCTIONING AND EXPERIENCING THE WORLD. THE KUNDALINI, OVER TIME, BECOMES A SELF-SUSTAINING ENERGY CIRCUIT FUELED BY FOOD AND WATER THAT GROWS AND GETS STRONGER.

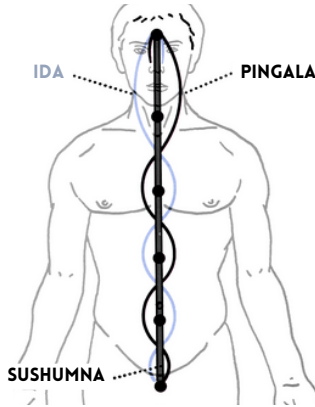


## CLAUSTRUM=SANTA CLAUSE



### OIL PROCESS:

- 1-THE CLAUSTRUM (CLAUS=SANTA CLAUSE) PRODUCES THE PSYCHO-PHYSICAL FLUID WHICH THEN GOES TO THE PINEAL AND PITUITARY GLAND
  - 2-THE PINEAL GLAND ELECTRICALLY CHARGES THE FLUID (MALE/ JOSEPH)
  - 3-THE PITUITARY GLAND MAGNETICALLY CHARGES THE FLUID (FEMALE/ MARY)
  - 4-THEN THE FLUID WILL TRAVEL DOWN THE TWO NERVES, THE IDA WHICH IS CONNECTED TO THE PITUITARY, AND THEN THE PINGALA WHICH IS CONNECTED TO THE PINEAL GLAND.
  - 5-THE OIL THEN RESTS FOR 2/3 DAYS ON THE SACRUM BONE/SOLAR PLEXUS
  - 6-IF THE OIL IS SAVED AND NOT DESTROYED THE OIL WILL ACTIVATE THE KHUNDALINI ENERGY WHICH WILL TURN THE OIL INTO A GAS AND RISE BACK UP THE 33 VERDABREAS TO THE MEDULLA OBLONGATA.
  - 7-THIS WILL THEN PASS TO THE PINEAL GLAND AND THEN TO THE CEREBRUM WHICH WILL REBIRTH/RESURRECT ALL BRAIN CELLS, ACTIVATE THE PINEAL GLAND, AND REGENERATE ALL THE CELLS IN THE BODY
- THIS PROCESS IS SYMBOLISED AS BEING "BORN AGAIN"



### THE BRAIN IN THE BIBLE IS:

- THE UPPER ROOM WHERE JESUS MEETS THE 12 DISCIPLES/12 CRANIAL NERVES
- THE HOLY LAND
- THE LAND FLOWING WITH MILK AND HONEY
- PROMISE LAND OF ISRAEL

MILK=PITUITARY GLAND  
HONEY=PINEAL GLAND

CHRISTOS=GREEK FOR OIL  
THEN IT BECAME CHRIST

CORINTHIANS 13:5  
"DO YOU NOT KNOW THAT JESUS CHRIST IS WITHIN YOU?"

### HOW TO RAISE THE OIL

- RETAIN YOUR SEXUAL FLUIDS
- CONSUMING AN ALKALINE DIET
- NO CONSUMPTION OF ACIDIC FOODS/FLUIDS
- NO CONSUMING ALCOHOL
- KHUNDALINI MEDITATION
- BALANCE ALL CHAKARAS
- KEEPING YOUR TONGUE ON THE TOP OF YOUR MOUTH
- PROPER BREATHING



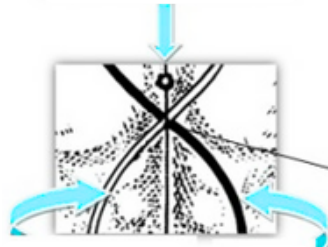
### PSALMS 137:6

MY MOUTH CLING TO THE ROOF OF MY MOUTH IF I DO NOT REMEMBER YOU, IF I DO NOT CONSIDER JERUSALEM MY HIGHEST JOY

THE IDA (FEMANINE) CHANNLE IS CONNECTED TO THE PITUITARY GLAND.

THE PINGALA (MASCULINE) CHANNLE IS CONNECTED TO THE PINEAL GLAND.

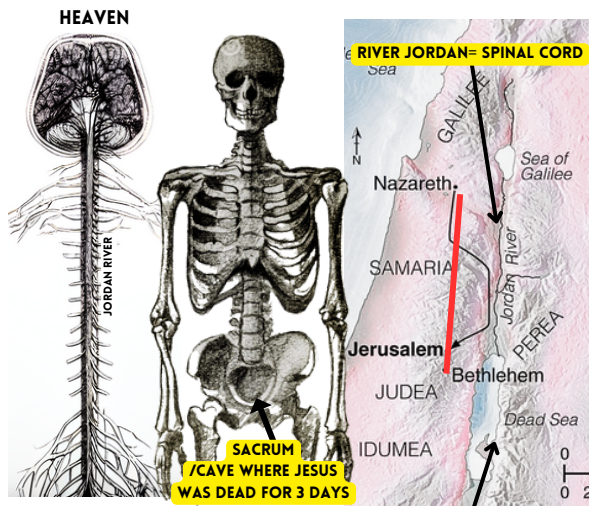
## SUSHUMNA



PINGALA IDA



### MEDICAL SYMBOL



JESUS (THE OIL) IS IN NAZARETH (THE HEAD) WITH JOSEPH AND MARY (THE PINEAL AND PITUITARY GLAND) AND KING HAROD WANTS TO KILL HIM. JESUS (THE OIL) GOES DOWN THE RIVER JORDAN (THE SPINE) TO BETHLEHEM NEXT TO THE DEAD SEA (SACRUM BONE). JOSEPH AND MARY (PINEAL AND PITUITARY GLAND) ARE WAITING FOR JESUS (THE OIL) TO RETURN.

THE PROCESS OF THE OIL COMING DOWN FROM THE HEAD SYMBOLIZES JESUS COMING DOWN FROM HEAVEN INTO PHYSICAL FORM.

JESUS DYING FOR 3 DAYS AND THEN BEING RESURRECTED TO BE CRUCIFIED AT 33 IS A METAPHORICAL STORY ABOUT THE CHRIST OIL PROCESS WITHIN THE BODY WHICH ACTIVATES 100% OF THE BRAIN.

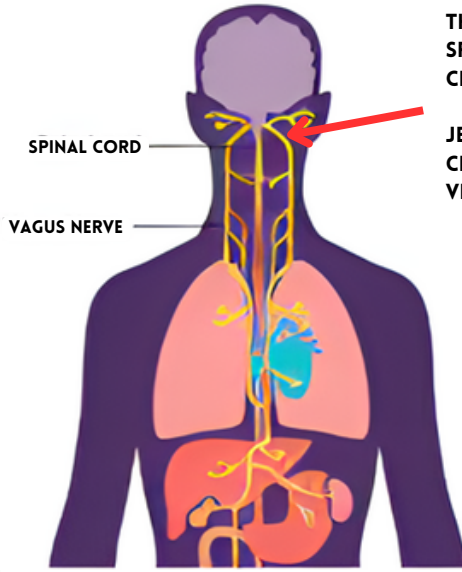
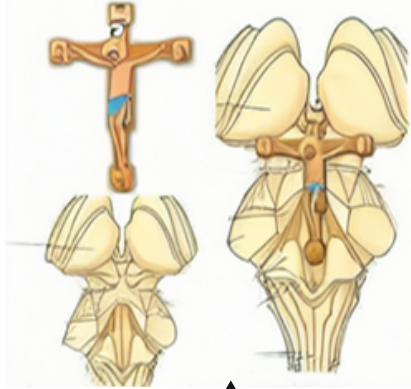
THE STORY OF JESUS IS METAPHORICAL FOR THE JOURNEY OF THE SACRED OIL THE BRAIN PRODUCES. THE OIL COMING DOWN FROM THE BRAIN IS GOD DESCENDING FROM HEAVEN TO EARTH. JESUS DYING FOR 3 DAYS IN THE CAVE IS SYMBOLIC OF THE SACRED FLUID STAYING IN THE SACRUM BONE AT THE BASE OF THE SPINE (THE CAVE) FOR SOME TIME. THEN ONCE THE OIL IS RESURRECTED, MEANING ACTIVATING THE KHUNDALINI TO RIASE THE OIL BACK UP THE SPINE, IT TRAVELS PASSED ALL OF THE 33 VERTEBRAS ON THE BACK OF THE SPINE AND CROSSES THE VAGUS NERVE. THE SACRED OIL CROSSING THE VAGUS NERVE IS JESUS BEING CRUCIFIED AT 33 YEARS OF AGE BECAUSE THERE ARE 33 VERTEBRAS ON THE BACK OF THE SPINE. THE DEATH OF JESUS SYMBOLIZES BEING BORN AGAIN AND TURNING SPIRIT MATTER IN SPIRIT.

THE CEREBROSPINAL SYSTEM IS AN EXTENTION OF THE BRAIN

THE DEAD SEA= SACRUM BONE/ SOLAR PLEXUS

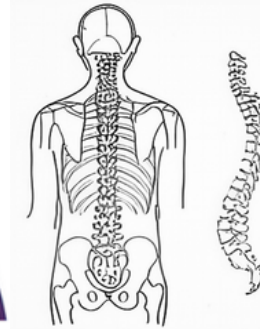
# CHRIST OIL

**JESUS WAS CRUCIFIED AT GOLGOTHA WHICH TRANSLATES TO THE PLACE IN THE SKULL, THIS IS JESUS ON THE CROSS OVERLAPPED ONTO THE MID BRAIN**



THE CHRIST OIL PASSES THE 33 VERTEBRAS OF THE SPINE AND THEN PASSES THE VAGUS NERVE WHICH CROSSES OVER

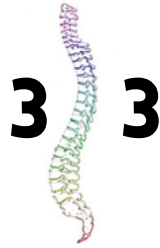
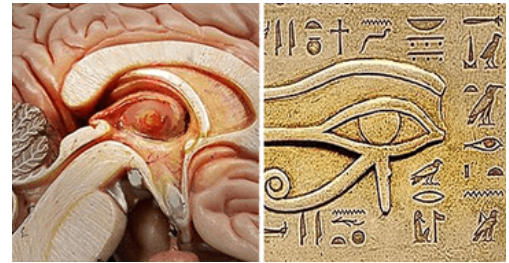
JESUS WAS CRUCIFIED AT 33 BECAUSE IT WAS THE CRUCIFIXION OF THE CHRIST OIL PASSING THE 33 VERDABREAS AND CROSSING THE VAGUS NERVE.



33 VERDABREAS FOR THE 33 YEARS OF CHRIST/CHRIST OIL. JESUS DYING AT 33 ALSO SYMBOLIZES TURNING MATTER INTO SPIRIT WHEN MOVING THE OIL PAST THE 33 VERDABREAS. AS HE HAS SACRIFICED HIS FLESH NATURE/PERSONALITY AND HAS NOW MANIFESTED HIS TRUE GOD SELF

JOHN 3:3  
"UNLESS YOU ARE BORN AGAIN, YOU CANNOT SEE THE KINGDOM OF GOD".

IT'S NOT A COINCIDENCE THAT THE VERSE JOHN 3:3 IS TALKING ABOUT BEING REBORN AGAIN. YOU ARE REBORN AGAIN WHEN THE OIL RISES BACK UP PASTED THE 33 VERDABREAS.



MATTHEW 6:22  
"THE LIGHT OF THE BODY IS THE EYE; THEREFORE IS THINE EYE BE SINGLE, THE WHOLE BODY SHALL BE FULL OF LIGHT".

GENESIS 32:30  
"JACOB NAMES THE PLACE PENEIL, FOR HE SAID, I HAVE SEEN GOD FACE TO FACE" PENIEL IS THE THE PINEAL GLAND WHICH IS THE SEAT OF CONSCIOUSNESS (THRONE OF GOD).

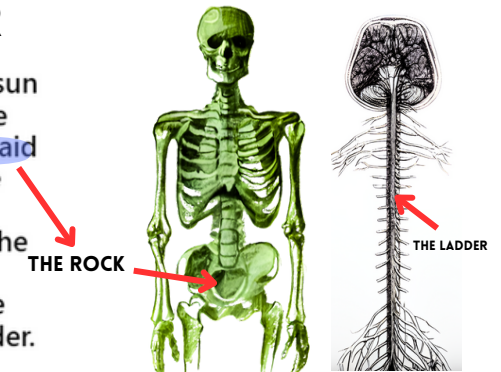
"THE KINGDOM OF GOD IS WITHIN YOU" IS THE KEY PHRASE IN LUKE 17:21

JACOB SYMBOLIZES THE OIL IN THIS PARABLE. THE ROCK HE FELL ASLEEP ON IS THE SACRUM BONE, WHERE THE OIL FALLS AND STAYS FOR SOME TIME. HE THEN SAW A LADDER THAT REACHED HEAVEN, WHICH IS THE SPINAL CORD LEADING UP TO THE BRAIN (HEAVEN). THE SPINAL CORD IS THE STAIRWAY TO YOUR HEAD (HEAVEN).

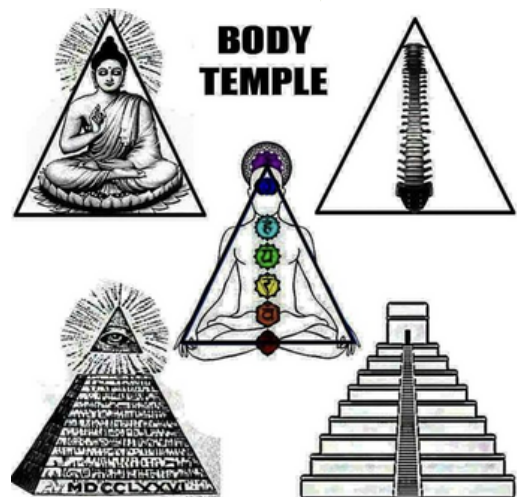
Genesis 28:10-22 ERV

## JACOBS LADDER

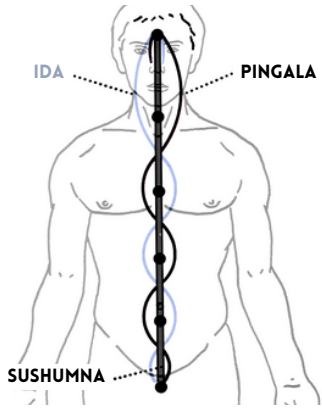
Jacob left Beersheba and went to Haran. The sun had already set when he came to a good place to spend the night. He took a rock there and laid his head on it to sleep. Jacob had a dream. He dreamed there was a ladder that was on the ground and reached up into heaven. He saw the angels of God going up and down the ladder. And then Jacob saw the LORD standing by the ladder. He said, "I am the standing by the ladder."



FREEMASONS SYMBOLIZE THE SPINAL CORD WITH A LADDER OR STAIRCASE



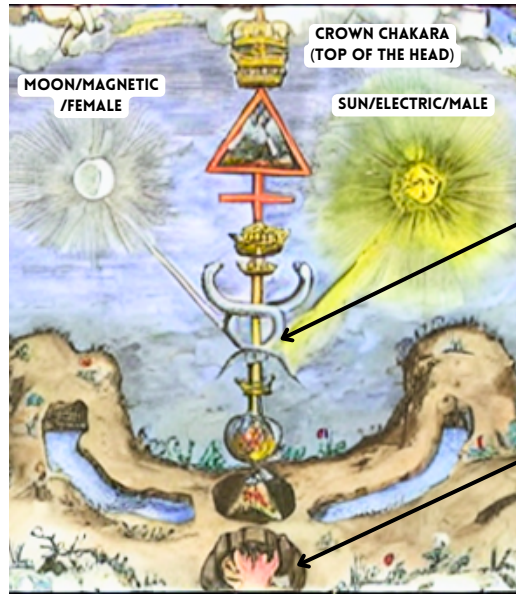
# CHRIST OIL & SYMBOLOLOGY



THE SUN AND MOON ARE THE TWO MALE AND FEMALE PRINCIPLES THAT CORRESPOND WITH ALL THINGS IN THIS CREATION. THE SUN IS POSITIVE, MALE & ELECTRIC. THE MOON IS NEGATIVE, FEMALE, MAGNETIC.

THE SUN AND MOON CREATE THE SACRED FLUIDS WITHIN THE CLAUSTRUM IN THE BRAIN. THE TWO SACRED FLUIDS ARE REFERRED TO IN THE BIBLE AS THE MILK AND HONEY. THE LAND FLOWING WITH MILK AND HONEY IS THE BRAIN.

## MASONIC ART



TWO SERPENTS TO SYMBOLIZE THE TWO KHUNDALINI CHANNELS WRAPPED AROUND THE SPINE

THE FIRE AT THE BOTTOM OF THE ARTWORK SYMBOLIZES KUNDALINI ENERGY AT YOUR SPINE'S BASE. ACTIVATION OF THE KUNDALINI ENERGY AT THE SPINE BASE IS THE FORCE USED TO PUSH THE CEREBROSPINAL FLUID UP THE SPINE TO REACH THE PINEAL GLAND.

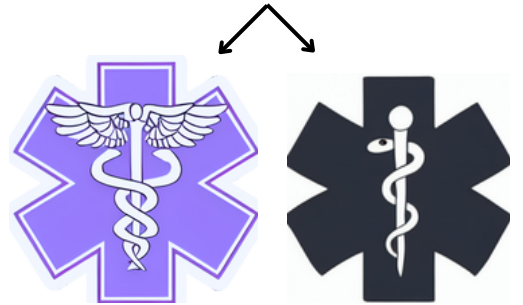
{ TAKE YOUR LAND }

And if the LORD is pleased with us, he will bring us safely into that land and give it to us. It is a rich land flowing with milk and honey, and he will give it to us!

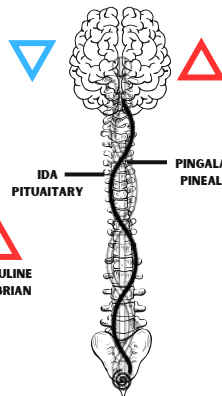
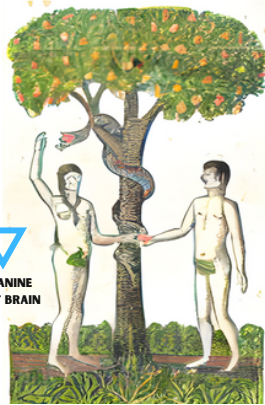
Numbers 14:8

"LORD" = HIGHER SELF/INNER YOU/OBSERVER/CHRIST  
MILK=MOON=PITUITARY GLAND  
HONEY=SUN=PINEAL GLAND

## MEDICAL SYMBOL



THE MEDICAL INDUSTRY USES THIS SYMBOL BECAUSE WHEN KUNDALINI ENERGY RAISES CHRISM OIL TO THR BRAIN IT HAS HEALING ABILITIES. IT IS SAID THAT RAISING THE SECRETION ACTIVATES ALL THE DORNMENT BRAIN CELLS IN THE BRAIN, REGULATES BLOOD PRESSURE AND REGENERATES THE BODY.



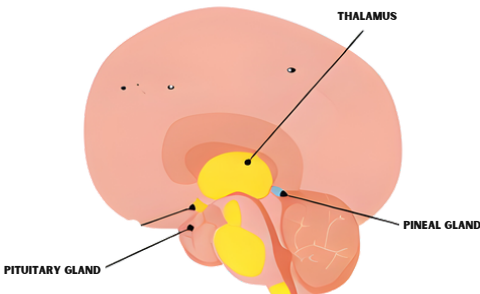
TREE=SPINE  
TREE LEAVES=BRAIN  
MALE=PINGALA CHANNLE=PINEAL=SUN=ELECTRIC  
FEMALE=IDA= CHANNLE=PITUITARY=MOON=MAGNETIC  
SERPENT KHUNDALINI CHANNLES

## "THREE WISE MEN FROM THE EAST"

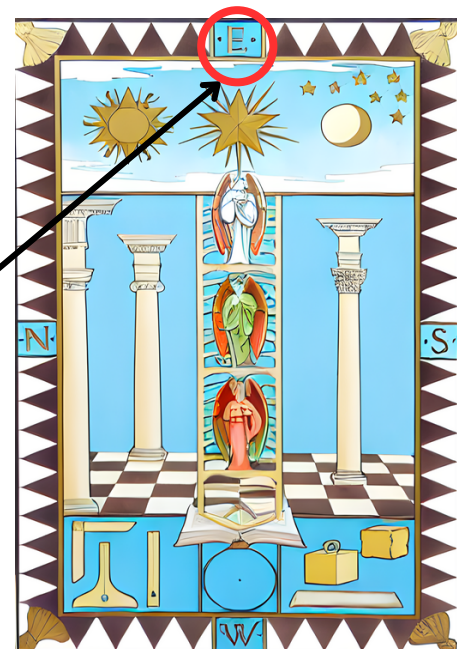


"THREE WISE MEN FROM THE EAST"  
1. THALAMUS  
2. PINEAL GLAND  
3. PITUITARY GLAND

LADDER=SPINE



## MASONIC ART

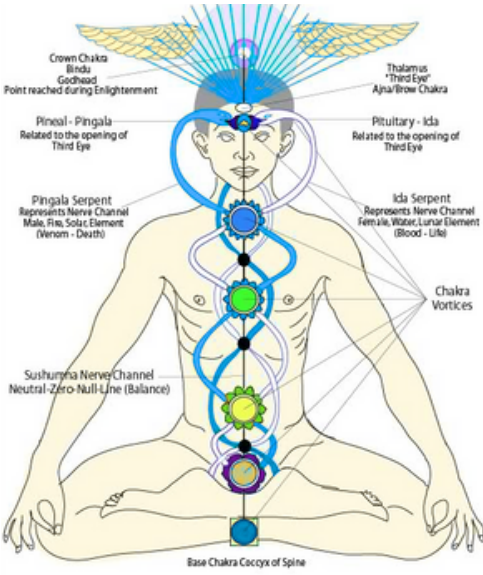


# John 3:14

**JUST AS MOSES LIFTED UP THE SNAKE IN THE WILDERNESS, SO THE SON OF MAN MUST BE LIFTED UP**

**SNAKE=SERPENT=KHUNDALINI**

**LIFTING UP THE SERPENT IS LIFTING UP THE KHUNDALINI ENERGY**



**"SON OF MAN MUST BE LIFTED UP"**  
**SON=SUN=SOL=SOUL**  
**SOUL OF MAN MUST BE LIFTED THROUGH**  
**KHUNDALINI ACTIVATING THE PINEAL GLAND.**  
**ACTIVATION OF THE PINEAL GLAND GIVES**  
**YOU THE ABILITIES TO LEAVE THE BODY**  
**AND EXPLORE OTHER REALITIES.**

**MOSES WAS TEACHING PEOPLE TO RAISE**  
**THERE KHUNDALINI ENERGY TO ACTIVATE THE**  
**PINEAL GLAND WHICH WOULD THEN GIVE THE**  
**HUMAN OUT OF BODY ABILITIES. LEAVING**  
**THE BODY GIVES YOU ACCESS TO WORLDS**  
**BEYOND TIME AND SPACE.**

**THE STORY OF JESUS IS SYMBOLIC OF THE ALCHEMICAL PROCESS THAT OCCURS MONTHLY WITHIN THE HUMAN BODY. JESUS FALLS FROM HEAVEN AND INCARNATES ON THE EARTH, WHICH IS SYMBOLIC OF THE CHRIST OIL TRAVELING DOWN THE SPINE FROM YOUR BRAIN (HEAVEN). THE SACRED OIL STAYS STILL WITHIN THE SACRUM BONE FOR 3 DAYS, WHICH IS JESUS BEING DEAD IN THE CAVE FOR THREE DAYS. ONCE JESUS RESURRECTS (THE OIL RISING UP THE SPINE) HE GETS CRUCIFIED AT 33 YEARS OF AGE. THE SPINE CONTAINS 33 VERDABREAS, AND ONCE THE OIL PASSES ALL 33 VERDABREAS AND REACHES THE OPTIC THALAMUS, IT GETS CRUCIFIED ON THE CROSS BECAUSE THE THALAMUS LOOKS LIKE A CROSS. THE DEATH OF JESUS SYMBOLIZES TURNING MATTER INTO SPIRIT AS THE RETURN OF THE OIL GIVES THE HUMAN SUPERNATURAL ABILITIES LIKE ASTRAL TRAVEL.**



**BIRDS SYMBOLIZE THE HOLY SPIRIT/SOUL.**



**THE MIND IS THE SERPENT BECAUSE SERPENTS SYBOLIZE KNOWLEDGE. THE MIND IS THE INTERLECT THAT CONNECTS THE SOUL TO THE BODY; THIS IS WHY THE MIND IS IN THE MIDDLE; IT PROJECTS THE SOUL INTO THE REALITY WE CHOOSE TO EXPERIENCE.**

**THE SOUL (BRAHMA) HAS MULTIPLE FACES, SYMBOLISING THE SOUL TAKING ON DIFFERENT BODIES; IT IS DIMENSIONAL.**

**JESUS CHRIST**  
**JESUS=BODY**  
**CHRIST=CHRIST CONCIOSNESS**

**FREEMASONS DO NOT SAY JESUS CHRIST THEY SAY CHRIST JESUS. THEY DO THIS TO SAY CONCIOSNESS COMES FIRST. CHRIST OVER THE BODY.**



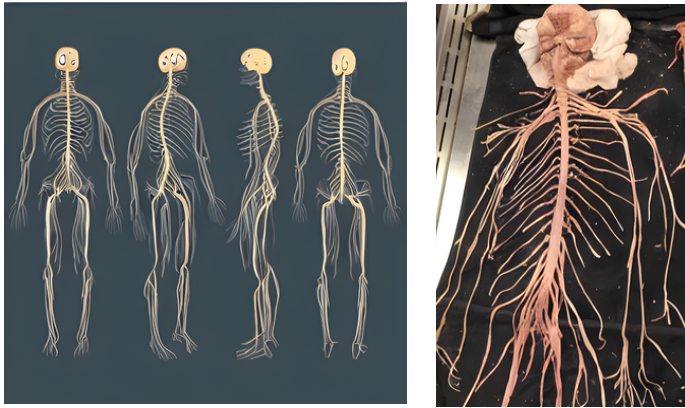


# AS WITHIN SO WITHOUT

## GENESIS 2:9

THE TREE OF LIFE WAS ALSO IN THE MIDST OF THE GARDEN, AND THE TREE OF KNOWLEDGE OF GOOD AND EVIL.

THE TREE OF KNOWLEDGE OF GOOD AND EVIL=THE NERVOUS SYSTEM



THE TREE OF KNOWLEDGE OF GOOD AND EVIL IS THE NERVOUS SYSTEM BECAUSE IT GIVES OUR MIND KNOWLEDGE OF GOOD AND EVIL. THE MIND AND SOUL COME FROM ETERNAL BLISS, AND THE MIND PROJECTS THE SOUL INTO THIS DUALISTIC SIMULATION TO GAIN THE KNOWLEDGE OF DUALISM.

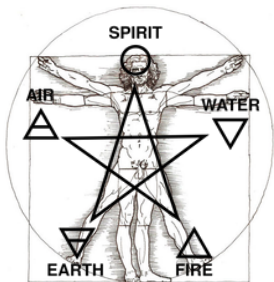
THE NERVOUS SYSTEM DECODES ELECTRICAL IMPULSES GIVEN TO IT BY THE EXTERNAL WORLD AND REPORTS BACK TO THE BRAIN. OUR CONSCIOUSNESS IS PRETTY MUCH EXPERIENCING A PROGRAM PLAYED OUT BY THE CENTRAL NERVOUS SYSTEM.

## 4 RIVERS IN THE GARDEN OF EDEN GENESIS 2:10

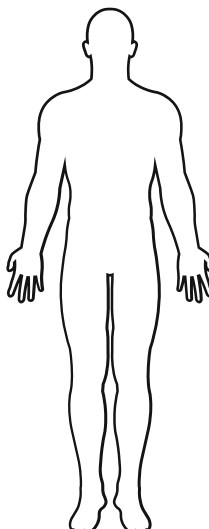
A river flows out of Eden to water the garden and from there divides into four rivers. The first is named Pishon; it flows through Havilah where there is

THE 4 RIVERS FLOWING IN THE GARDEN OF EDEN ARE THE 4 HOLY FLUIDS IN THE BODY WHICH ARE:

- 1) BLOOD
- 2) SELIVER
- 3) CHRIST OIL
- 4) SEMEN/VAGINAL FLUID



HEAD  
HEA HEAVEN



HEEL  
HELL

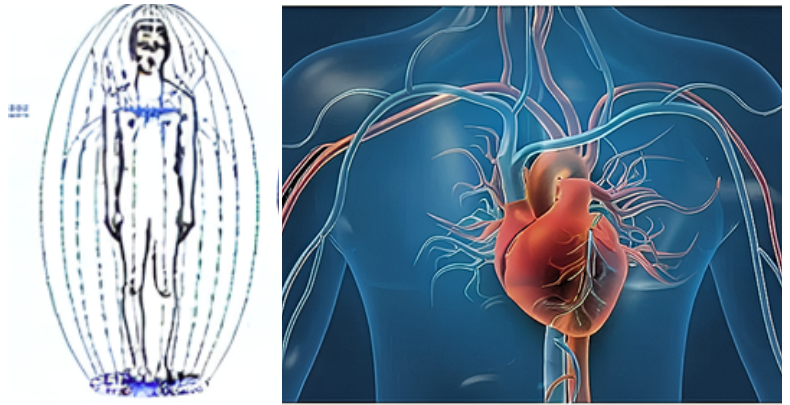
## YOU ARE A STAR

STER=STAR  
A AND E ARE INTERCHANGABLE

MISTER  
MINISTER, SISTER, MONSTER, SUPER STAR, MASTER, FRAUSTER, SINISTER.

YOU ARE A QANTOM PHOTON (A STAR) IN A PHYSICAL BODY. YOU ARE ALL KNOWING AND DIRECTLY FROM THE SOURCE, IN OTHER WORDS YOU ARE GOD/GODESS EXPERIENCING THE PROGRAM BEING RAN BY THE CENTRAL NERVOUS SYSTEM. WHILE WE ARE INCARNATED HERE WE ARE DIVIDED FROM SOURCE AND ABSENT OF THE KNOWLEDGE OF OUR TRUE DIVINE INSIGHT.

## THE TREE OF LIFE=CARDIOVASCULAR SYSTEM



THE CARDIOVASCULAR SYSTEM IS THE TREE OF LIFE BECAUSE IT PROVIDES LIFE TO THE PHYSICAL BODY. GEN 2:9: "THE TREE OF LIFE WAS IN THE MIDST OF THE GARDEN." THE GARDEN IS YOUR BODY, AND THE MIDST IS THE MIDDLE, WHICH IS THE HEART.

THE HEART IS THE CENTRE OF THE BODY'S ELECTROMAGNETIC FIELD, AND AT THE CENTRE OF EVERY TORUS FIELD IS MAGNETISM. MAGNETISM PULSES/RADIATES; THIS IS WHY YOU HAVE A HEARTBEAT. IT IS THE RADIATION OF MAGNETISM THAT CREATES THE BEATING OF YOUR HEART. THE HEART IS 5000X STRONGER MAGICALLY THAN THE BRAIN; IT IS THE MOST MAGNETIC ORGAN WITHIN THE BODY. THE HEART IS THE PLACE OF THYNE EMOTIONS; EMOTION IS THE LANGUAGE OF THE UNIVERSE.

THE MAGNETIC PULSE OF THE HEART IS WHAT GIVES LIFE TO THE BODY. ALL THINGS THAT LIVE HAVE TO HAVE A PULSE; IT'S THE UNIVERSAL "BREATH" OF LIFE. WE BREATHE, PULSE, BLINK, SLEEP, LIVE, AND DIE. ALL OF THIS IS THE EXPRESSION OF THE ONE UNIVERSAL BREATH OF LIFE.

## BODY



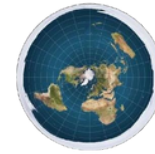
MIND

SOUL

EARTH=BODY

MOON=MIND

SUN=SOUL



BODY

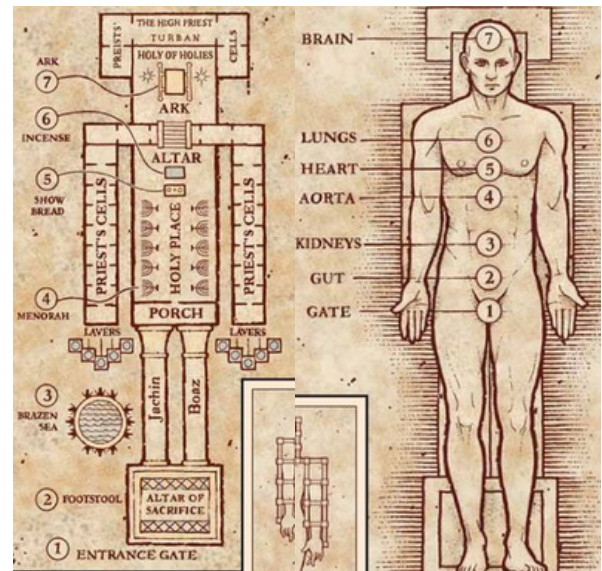
MIND

SOUL



THE TEMPLE OF SOLOMON IS YOU

THE BODY IS THE TEMPLE OF THE SOUL AND MIIND

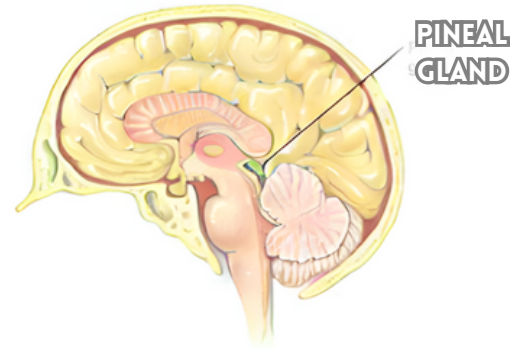


# THE PINEAL GLAND

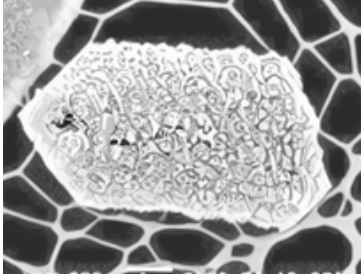
## THE PINEAL GLAND -

THE PINEAL GLAND IS A CONED SHAPED BODY, 6MM HIGH AND 4MM IN DIAMETER

- THE MIND ENHABITS THE PINEAL GLAND.
- ITS THE ORGAN THROUGH WHICH THE ELECTRICAL FORCES OF THE BODY PLAY
- IT'S WHAT THE UNIVERSAL ESSENCE/SOUL/CONSCIOUSNESS DEPOSITED
- IT IS THE LIGHT OF THE BODY THAT GIVES LIFE TO THE WHOLE TEMPLE.
- THE PINEAL IS THE MALE SPIRITUAL ORGAN.
- THE PINEAL GLAND OPENS WHEN THE TWO EYES ARE CLOSED FOR PERIODS.
- THE MORE SPIRITUAL WORK YOU DO THE MORE ACTIVE THE PINEAL GLAND BECOMES
- THE PINEAL GLAND IS COVERED IN MICROCRYSTALS. CRYSTALS HAVE THE ABILITY TO RECEIVE AND EMIT FREQUENCIES.

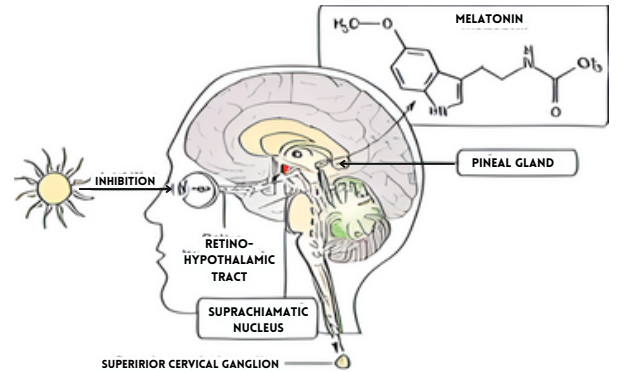


## CRYSTALS ON PINEAL GLAND



THE PINEAL GLAND HAS PIZOLUMINESCENT CELLS WHICH ARE CRYSTALLINE JAGGED SHAPED.

- THE RETINA OF THE TWO EYES ALSO HAS THESE CELLS
- THE PINEAL HAS THEM BECAUSE IT TAKES IN LIGHT AND REFLECTS, REFRACTS AND EMITES LIGHT.
- THE PINEAL GLAND EMITS LIGHT THIS IS WHY WE SAY ENLIGHTENMENT.



THE VATICAN SUPPRESSED THE INFORMATION ON THE PINEAL GLANDS' MYSTICAL POWERS. THE VATICAN (CATHOLIC CHURCH) TOOK OVER EUROPE AND DESTROYED/STOLE ALL THE KNOWLEDGE AND LIBRARIES CONTAINING ALL THE ANCIENT TEXTS AND INFORMATION OF OUR TRUE POWERS. THEY THEN CREATED AN ENCODED HOLY BIBLE TO KEEP PEOPLE LOOKING OUTSIDE OF THEMSELVES FOR GOD.

THE PINEAL GLAND IS THE SEAT OF CONSCIOUSNESS, ALSO KNOWN AS THE SEAT OF THE SOUL/TRHONE OF GOD. THE PINEAL GLAND IS AN EMPTY CHAMBER THAT HOLDS THE UNIVERSAL ESSENCE WHICH IS INVISABLE TO THE NAKED EYE. OUR TRUE SELF IS WITHIN THE PINEAL GLAND AND FROM THIS CENTRE WE CONTROL THE PHYSICAL BODY.

EYE OF RA EYE OF HORUS



- △ 1/2 = Smell
- 1/4 = Sight
- ∩ 1/8 = Thought
- ▽ 1/16 = Hearing
- ∪ 1/32 = Taste
- ∩ 1/64 = Touch

## THE VATICAN SYMBOLIZING THE PINEAL GLAND

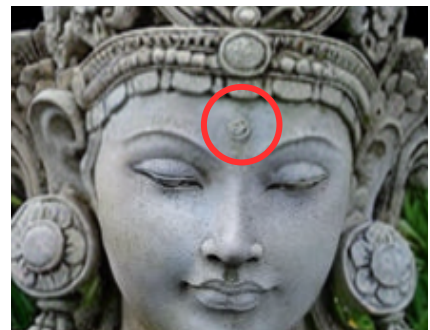


PINE CONE →

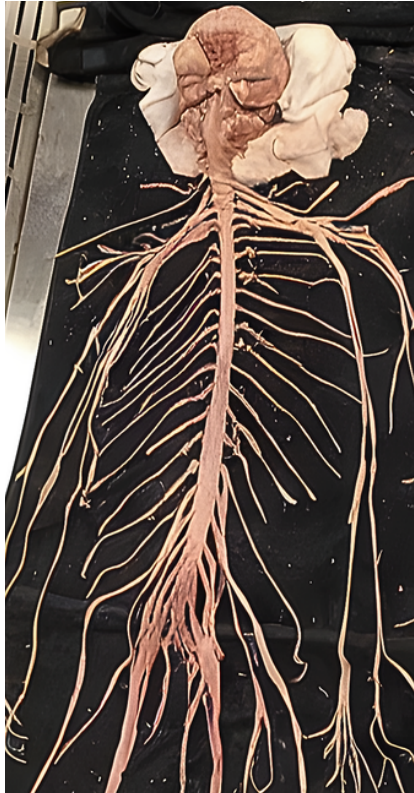
SUMARIAN GOD HOLDING PINE CONE SYMBOLIZING PINEAL GLAND.



## THE ANCIENT EGYPTIANS KNEW ABOUT THE PINEAL GLAND



# THE PINEAL GLAND



EVERYTHING IN THE BODY LEADS BACK TO ONE SOURCE POINT, WHICH IS THE CENTRE OF THE BIAN. THE CENTRE OF THE BRAIN IS THE PINEAL GLAND, WHICH WE REFER TO AS "I." "WHEN WE SAY "I" WE ARE REFERRING TO THE INNER BEING/ OBSERVER/ENTITY THAT IS CONTROLLING THE BODY. IF WE SAY "MY BODY," THEN IF IT IS MINE, IT IS NOT ME. THIS BODY IS THE VEHICLE FOR OUR SOUL/ENTITY TO OPERATE WITHIN THIS PHYSICAL WORLD OF TIME AND SPACE.

33 VERDABREA



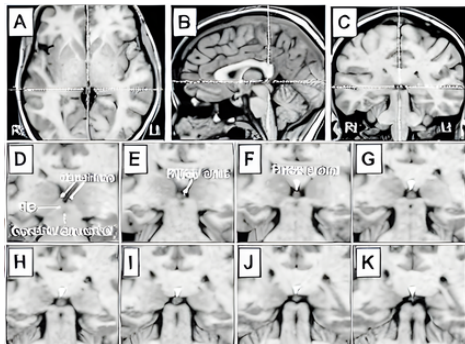
THE THRONE OF GOD IS IN THE CENTRE OF THE BRAIN. CONSCIOUSNESS IS GOD AND WE ARE ALL THAT SAME SPARK OF CONSCIOUSNESS IN THE CNETRE OF THE BRAIN.

he was taken up into heaven and he sat at the right hand of God.  
**Mark 16:19**

THE RIGHT HAND OF GOD IS THE RIGHT HEMISPHERE OF THE BRAIN. THE RIGHT HEMISPHERE IS TO DO WITH CREATIVITY, INTUITION AND INSIGHT WHICH IS CONNECTED TO THE CEREBRUM (THE HIGHER BRAIN)

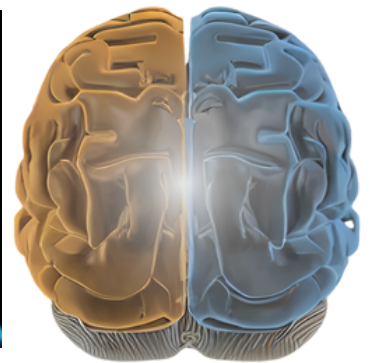
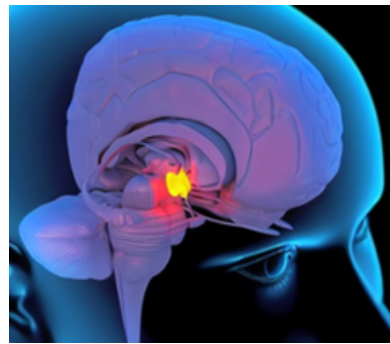
## CHRONICLES 3:10

In the most holy place he made two cherubim by carving, and they overlaid them with gold.



THE MOST HOLY PLACE = THE PINEAL GLAND/CENTRE OF THE BRAIN,

TWO CHERUBIM = THE TWO HEMISPHEARS OF THE BRAIN.



THE SWORD IN THE LAMB SYMBOLIZES KILLING THE LOWER NATURE OF YOUR CONSCIOUSNESS AND MOVING UP THE SPINE TO THE HIGHER MIND/HIGHER SELF. NOTICE THE LAMB IS LOOKING UP AT THE CUP WITH THE SUN ON THE TOP. THE CUP IS YOUR HEAD AND NECK, AND THE SUN IS YOUR CONSCIOUSNESS IN THE CENTRE OF THE BRAIN ON TOP OF YOUR NECK.

THE BIRD IS AN AIR ANIMAL THAT SYMBOLIZES THE HIGHER NATURE OF MAN. THE GROUND ANIMALS SYMBOLISE THE LOWER NATURE OF MAN. THE TREE STUMP SYMBOLIZES YOUR SPINE

## MASONIC ART SUMARIAN ART



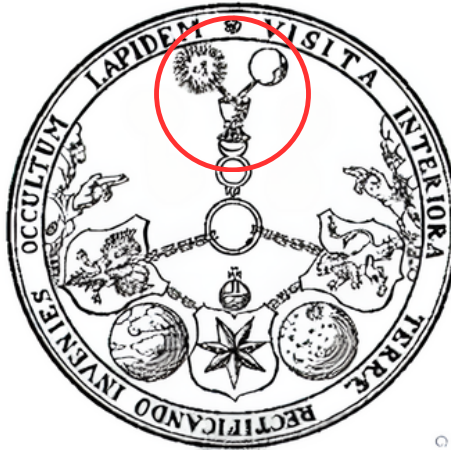
# THE HOLY GRAIL

## HOLY GRAIL=NECK AND SKULL

THE REASON WHY THE HOLY GRAIL IS A CUP IS BECAUSE THE SUN AND MOON CREATE THE HOLY FLUID (CHRIST OIL) AND FILL IT UP EVERY MONTH.



## MASONIC ART



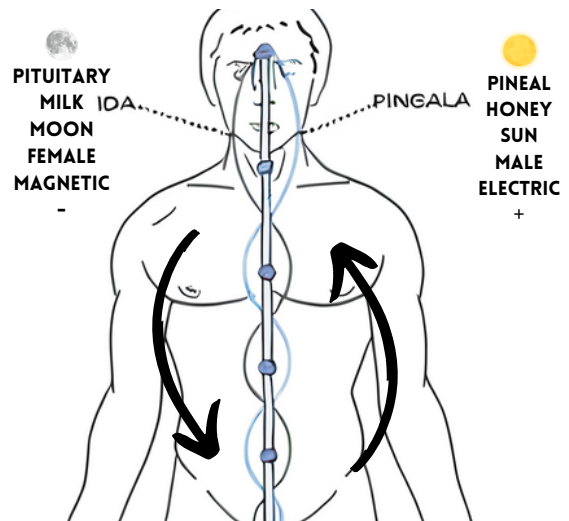
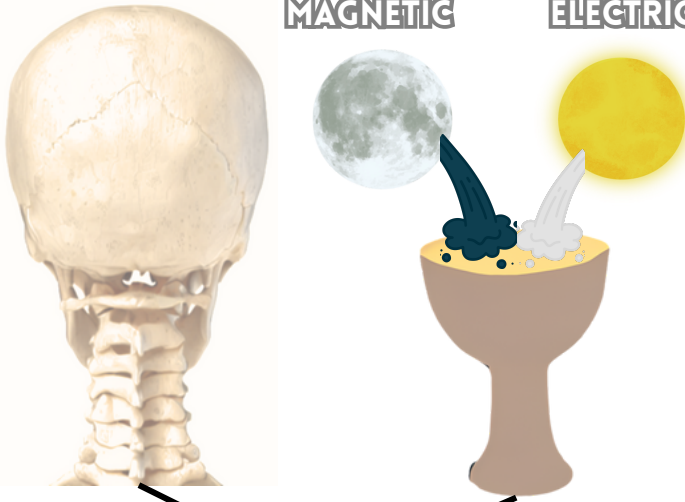
THIS MASONIC ART SYMBOLIZES THE SUN AND MOON CREATING THE "MILK AND HONEY" IN THE BRAIN.

THE MILK IS THE FLUID CREATED BY THE MOON. THE HONEY IS THE FLUID CREATED BY THE SUN.

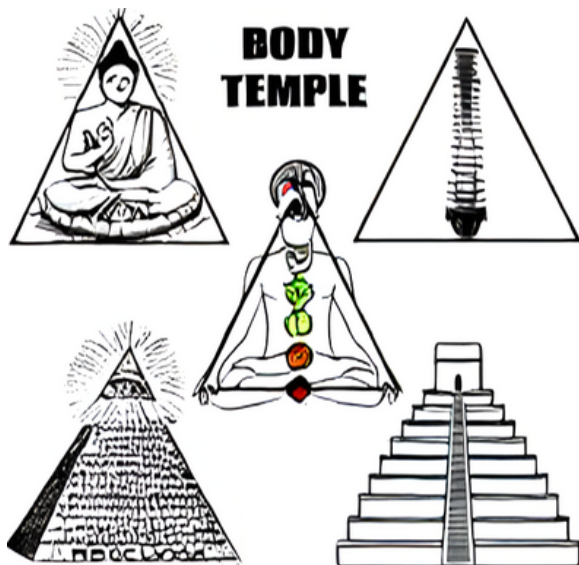


## MAGNETIC

## ELECTRIC



## HOLY GRAIL



## BODY TEMPLE

## CORINTHIANS 6:19-20

"OR DO YOU NOT KNOW THAT YOUR BODY IS A TEMPLE OF THE HOLY SPIRIT WITHIN YOU, WHOM YOU HAVE FROM GOD? YOU ARE NOT YOUR OWN, FOR YOU WERE BOUGHT WITH A PRICE. SO GLORIFY GOD IN YOUR BODY."

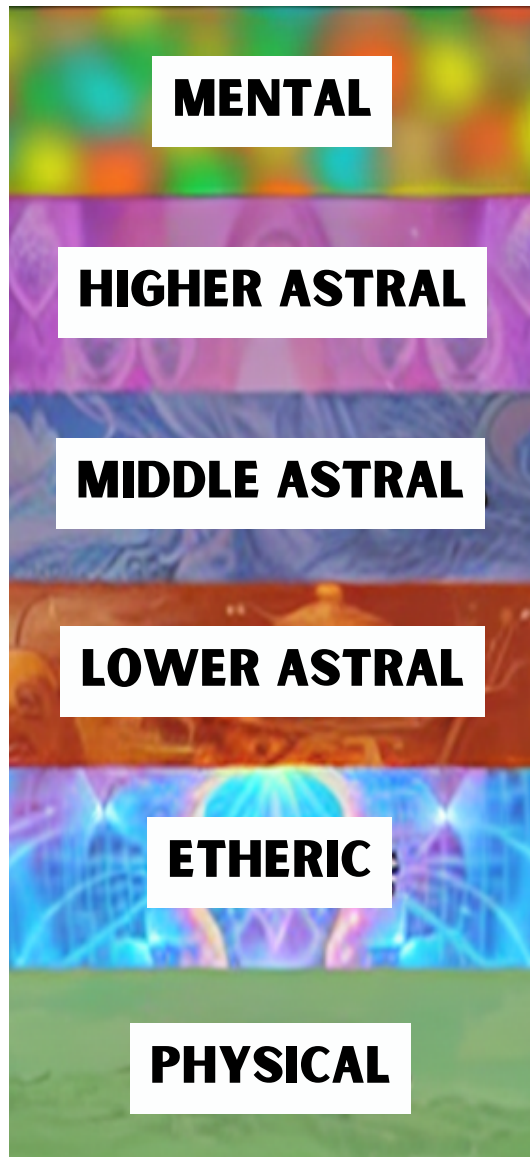
GLORIFY GOD IN YOUR BODY IS RAISING THE CHRISM/CHRIST OIL UP THE SPINE AND LOOKING AFTER THE BODY.

THE ELITES IN POWER HAVE EXTERNALIZED ALL OF THE SACRED THINGS LIKE THE HOLY GRAIL, TEMPLE OF SOLOMON, ETC. THIS IS DONE TO KEEP YOU FROM FINDING OUT THE FACT THAT YOU ARE THE ULTIMATE OF ALL THINGS. MAN IS TRULY CREATED IN THE IMAGE OF GOD.

THE CHURCH AND OTHER RELIGIONS ARE TEACHING THE MASSES THE EXOTERIC, MEANING EXTERNAL TEACHINGS. THIS IS DONE PURPOSELY TO KEEP THE PYRAMID SCHEME UP AND RUNNING. MEANWHILE, THE PEOPLE IN POWER GET TAUGHT THE ESOTERIC, MEANING THE INTERNAL TEACHINGS ABOUT THE BODY, CONSCIOUSNESS, AND THE METAPHYSICAL ASPECTS OF REALITY. THE BIBLE IS WRITTEN IN SUCH A WAY IT WILL RESONATE WITH YOUR LEVEL OF UNDERSTANDING. YOU CAN PERCEIVE THE BIBLE PHYSICALLY, HISTORICALLY, AND METAPHORICALLY DEPENDING ON HOW WIDE YOU HAVE EXPANDED YOUR MIND. YOUR REALITY IS YOUR LEVEL OF REALI-ZATION.

# PLANES OF EXISTENCE

THERE ARE DIFFERENT LEVELS OF REALITY. THEY ARE NOT SEPARATE; THEY MELT INTO THE PLANE THAT IS ABOVE AND BELOW; IN OTHER WORDS, EACH PLANE IS A PRODUCT OF THE PLANE THAT IS ABOVE. THE HIGHER THE PLANE, THE MORE FLUID/FORMLESS IT BECOMES; THE LOWER THE PLANE, THE MORE MATERIAL AND SOLID IT BECOMES.



**MENTAL**

**HIGHER ASTRAL**

**MIDDLE ASTRAL**

**LOWER ASTRAL**

**ETHERIC**

**PHYSICAL**

## MENTAL PLANE

THE MENTAL PLANE IS THE DIMENSION OF THE MIND. THE MIND IS A PART OF THE UNIVERSAL MIND. THEREFORE, THE MENTAL PLANE IS SHARED BETWEEN ALL THE MINDS THAT EXIST. IT IS THE WORLD OF THOUGHTS. THOUGHTS ARE NOT CREATED; THEY ARE RECEIVED BASED UPON WHAT FREQUENCY OUR MIND IS SET TO. THIS IS WHY WE CALL IT A MINDSET. EACH THOUGHT, TOPIC, AND SUBJECT IS A FREQUENCY, AND WHEN YOU SET YOUR MIND TO THESE TOPICS, YOU GAIN THE THOUGHTS THAT ARE ON THAT SIMILAR FREQUENCY. THE WORLD OF THOUGHT IS COMPLETELY FORMLESS. IT IS THE MOST FLUIDIC PLANE

## ASTRAL PLANE

THE ASTRAL PLANE IS WHERE THOUGHTS MANIFEST INTO FORMS. FOR EXAMPLE, THE MENTAL PLANE IS THE THOUGHT OF THE CHAIR, AND THE ASTRAL PLANE IS THE IMAGINATION OF THAT CHAIR. ITS BASICALLY THE WORLD OF IMAGINATION AND MENTAL PICTURES. THE SCREEN WE SEE IN OUR MIND WHEN WE IMAGINE SOMETHING IS THE ASTRAL PLANE. WE CREATE WITH OUR THOUGHTS; THIS IS WHY THOUGHTS ARE THINGS.

THE ASTRAL PLANE IS CREATED OUT OF THOUGHTS MANIFESTING, AND EACH THOUGHT HAS A VIBRATIONAL FREQUENCY. THIS RESULTS IN GENERATING 3 MAIN LEVELS TO IT: HIGHER, MIDDLE, AND LOWER. DEPENDING ON THE VIBRATIONAL FREQUENCY OF THE THOUGHT, MANIFESTING WILL RESULT IN THE THOUGHT FORM MANIFESTING ON THE HIGHER MIDDLE OR LOWER ASTRAL PLANES. THE HIGHER PLANES WILL EMBODY HIGH VIBRATIONAL THOUGHTS LIKE LOVE AND JOY, AND THE LOWER PLANES WILL BE DEMONIC THOUGHTS LIKE HATE, MURDER, AND LUST.

WHEN WE ASTRAL PROJECT, WE ARE USING OUR MIND TO PROJECT THE SOUL INTO THE ASTRAL PLANE. YOU WILL ONLY SEE AND ENCOUNTER BEINGS THAT ARE ON A SIMILAR FREQUENCY AS YOU. IF YOU OPERATE ON A LOW FREQUENCY, YOU WILL COME ACROSS DEMONS AND NEGATIVE ENTITIES.

DAEMONS, ANGELS, SPIRITS, AND JINS ARE LIVING WITHIN THE ASTRAL PLANE. THEY ARE BASICALLY ENTITIES THAT HAVE NO PHYSICAL BODY. ELEMENTALS ARE SPIRITS OF THE 4 ELEMENTS; FOR EXAMPLE, THERE ARE SPIRITS OF FIRE, WATER, EARTH, AND AIR.

## ETHERIC PLANE

THE ETHERIC PLANE IS THE WORLD OF ENERGY, ELECTRICITY AND MAGNETISM. IT IS THE 5TH ELEMENT, ALSO KNOWN AS SPIRIT OR AETHER. THE ETHER IS A SUBSTANCE THAT HAS ONE FOOT IN THE PHYSICAL WORLD AND ONE FOOT IN THE ASTRAL WORLD. ETHER IS WHERE WE GET THE WORD EITHER FROM. EITHER IS CONNECTING TWO SCENARIOS IN LANGUAGE, FOR EXAMPLE, "I EITHER SUPPORT MANCHESTER UNITED OR LIVERPOOL" THE ETHER IS THE SAME THING, CONNECTING TWO TWO PLANES TOGETHER. THE WORD TOGETHER HAS THE WORD ETHER WITHIN IT. ITS JOINING TWO PLANES.

THERE ARE ALSO ETHERIC ENTITIES THAT LIVE AMONGST US, LIKE GOBLINS, GNOMES, AND TROLLS. THEY ARE ENTITIES THAT HAVE THE ABILITY TO MATERIALIZE OR STAY IN THE ASTRAL BODY AT THEIR WILL. THEY CAN CHOOSE WHETHER TO BE PHYSICAL OR NON-PHYSICAL. THIS IS WHERE WE GET THE MYTHS OF TROLLS, FAIRIES, GNOMES AND GOBLINS FROM. THEY ARE VERY SECRETIVE BEINGS AND DO NOT LIKE TO BE SEEN BY HUMANS.

## PHYSICAL PLANE

THE PHYSICAL PLANE IS THE WORLD OF MATTER. IT IS THE WORLD GOVERNED BY THE 5 ELEMENTS. IT IS THE WORLD OF EFFECT. EVERYTHING WE EXPERIENCE AND VISUALLY SEE WITH THE TWO EYES IS THE EFFECT OF THE HIGHER PLANES ABOVE. THIS IS WHERE WE GET THE SAYING ABOVE, SO BELOW. YOU CHANGE THE HIGHER PLANES OF EXISTENCE; YOU CHANGE THE PHYSICAL PLANES. THIS IS WHY MAGIC IS INDEED REAL. MAGICIANS AND OCCULTISTS DO HAVE METHODS TO HAVE CONTACT WITH THESE ASTRAL AND ETHERIC ENTITIES, WHICH THEN HAVE THE ABILITY TO MANIPULATE THE PHYSICAL PLANE.



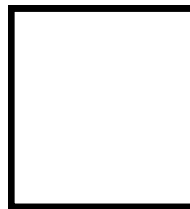
LEONARDO DA VINCI IS SYMBOLISING AS ABOVE SO BELOW. LOOK UP BECAUSE THAT THE ROOT CAUSE. THERE IS NO POINT IN LOOKING DOWN HERE BECAUSE THE PHYSICAL PLANE IS THE WORLD OF EFFECT; WHATEVER YOU SEE AND EXPERIENCE IS THE EFFECT OF YOUR MIND. SO LOOK UP AT THE CAUSE.

CHANGE YOUR MIND YOU CHANGE YOUR REALITY. AS WITHIN SO WITHOUT.

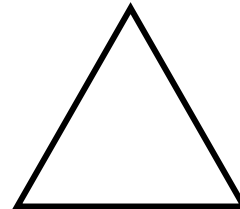


THE GREAT PYRAMID OF SOLOMON

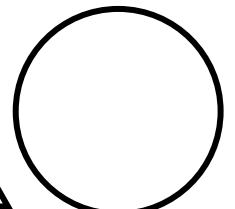
PHYSICAL PLANE



ETHEREAL PLANE



ETERNAL PLANE



THE TWO MASONIC PILLERS SYMBOLIZE THE NUMBER 11. IT IS THE MIRRORING OF REALITIES WITHIN THE THE PLANES OF EXISTENCE. WHATEVER YOU DO IN THE ASTRAL PLANE WILL MANIFEST INTO THE PHYSICAL WORLD; ITS LIKE A MIRROR. THIS IS WHY YOU ALWAYS SEE TWO PILLERS IN THE MASONIC ARTWORK.

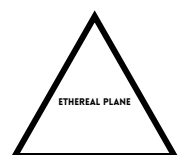
THE ETHEREAL PLANE IS IN CONSTANT ROTATION WITH THE PHYSICAL PLANE THROUGH RHYME, KARMA, POLARITY, AND GENDER. THE CIRCLE IS NEVER ENDING; IT HAS NO BEGINNING OR END, ITS ETERNAL. IT IS THE EXPANSIVENESS OF ALL THINGS.

**ASTRAL STAR**

THE STARS ARE NOT PHYSICAL PLACES THEY ARE PORTALS TO THE ASTRAL PLANE. THE STARS ARE THE START OF THE SOUL SYSTEM. WE ARE A STAR WRAPPED IN FLESH ( FALLEN ANGLE OF LIGHT (FALLEN ANGEL)).

**ASTRONOMY**  
ASTRO=ASTRAL  
SPACE IS FAKE

MENTALISM



CORRESPONDANCE ENERGY

# ASTRAL PROJECTION AND ASTRAL PLANE

## ADDITIONAL INFO BEFORE YOU ASTRAL PROJECT

- THE ASTRAL PLANE IS THE 4TH DIMENSION; IT'S THE UNSEEN OF WHAT WE SEE
- IT IS WHERE THOUGHT FORMS EXIST (MENTAL IMAGES)
- IT CAN BE SEEN ONLY BY OUR MIND'S EYE
- YOU WILL EXPERIENCE BEINGS AND ENTITIES THAT MATCH YOUR FREQUENCY, SO MAKE SURE YOU ARE VIBRATING AS HIGH AS POSSIBLE BEFORE TRYING TO PROJECT.
- EVERYTHING YOU THINK OF WILL MANIFEST INSTANTLY IN THE ASTRAL PLANE (4TH DIMENSION)
- YOUR VISION IN THE ASTRAL PLANE WILL NOT BE VERY CLEAR WHEN YOU FIRST ASTRAL PROJECT. YOU HAVE TO WORK ON STRENGTHENING IT.

## YOU CREATE DEAMONS

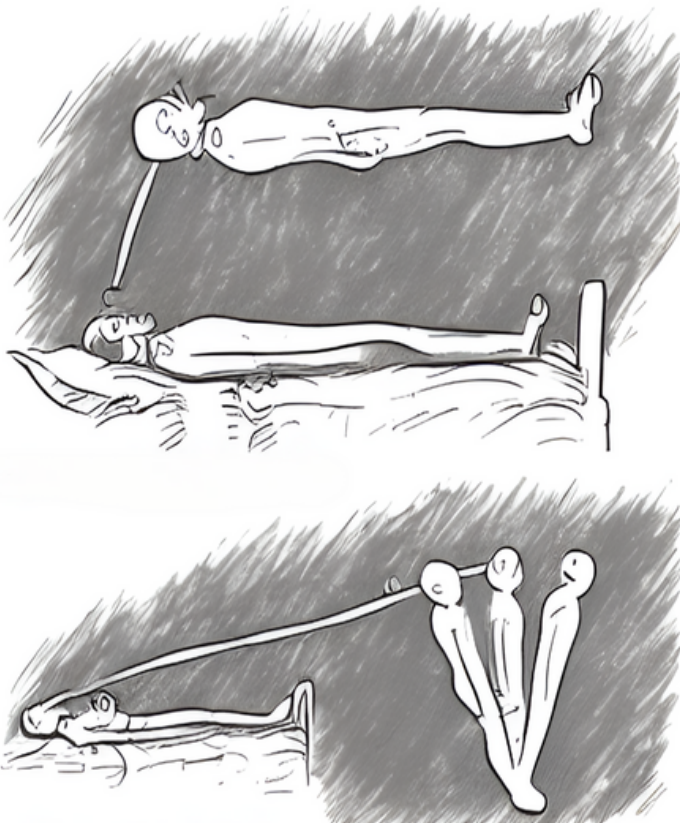
- THE IDEAS WE MENTALLY ENTERTAIN CAN TAKE FORM IN THE 4TH DIMENSIONAL PLANE. BY ENTERTAINING NEGATIVE THOUGHT FORMS FOR LONG PERIODS, THE EMOTIONAL POWER WE GIVE THIS THOUGHT CAN MANIFEST INTO A DEAMON. EVERY SINGLE MENTAL ADDICTION YOU HAVE IS SOME DEAMON YOU CREATED WITHIN THE ASTRAL PLANE. IT GROWS THE MORE EMOTION (ENERGY IN MOTION) YOU GIVE IT.
- THE WORD DEAMON HAS MON IN IT, WHICH MEANS MOON. MOON IS MIND, WE CREATE DEAMONS WITH OUR MINDS.

## HOW ASTRAL PROJECTION WORKS

- YOUR MIND IS THE PROJECTOR OF YOUR SOUL. YOUR SOUL IS THE EXPERIENCER (OBSERVER). WHEN YOU ASTRAL PROJECT, YOU ARE USING YOUR MIND TO PROJECT THE SOUL OUT OF THE PHYSICAL BODY (PHYSICAL WORLD) INTO THE ASTRAL PLANE WHERE THERE ARE NO LIMITATIONS OF TIME AND SPACE.
- WHEN YOU "DREAM," YOUR MIND IS PROJECTING THE SOUL INTO ANOTHER REALITY WHILE THE PHYSICAL BODY IS RESTING.

## PRACTICES FOR ASTRAL PROJECTION

- LIE DOWN FLAT WITH NO BODY PARTS TOUCHING
- REST EVERY SINGLE MUSCLE AND BE AS STILL AS POSSIBLE
- CLOSE YOUR EYES
- BREATH DEEP IN THROUGH THE NOSE AND SLOWLY OUT THE MOUTH
- MEDITATE UNTIL YOU HAVE LOST ALL DESIRES AND THE MIND IS EMPTY OF THOUGHTS
- THEN FOCUS YOUR ATTENTION ON THE MIDDLE OF YOUR BRAIN (PINEAL GLAND)
- DO THIS UNTIL YOU START TO FEEL TINGLING SENSATION ALL OVER THE BODY
- THE TINGLING SENSATION IS YOUR ENERGY BODY (ETHERIC BODY) BEING AWAKENED
- NOW IMAGINE YOURSELF PULLING A ROPE UP INTO THE SKY
- YOU MAY FEEL YOURSELF BEING LIFTED OUT OF THE BODY; DO NOT BE SCARED
- KEEP DOING THIS EXERCISE UNTIL YOU GAIN THE ABILITY TO LEAVE THE WHOLE BODY AND DISCOVER THE ASTRAL PLANE



IF YOU DO ASTRAL PROJECT SUCCESSFULLY AND YOU FEEL AS IF YOU WANT TO ENTER BACK INTO YOUR PHYSICAL BODY, ALL YOU HAVE TO DO IS THINK ABOUT GOING TO YOUR BODY, AND YOU WILL BE SHOT BACK INTO YOUR BODY.



JESUS NEVER WALKED ON WATER. IT IS SYMBOLIC FOR LEAVING THE PHYSICAL BODY. THE WATER IS THE ETHERAL PLANE, WHICH IS THE VEIL BETWEEN THE PHYSICAL WORLD AND THE ASTRAL WORLD. JESUS WAS WALKING ON TOP OF THE VEIL OF THE ETHER (ASTRAL PROJECTING).



WHEN JESUS TEACHES PETER TO "WALK ON WATER," HE IS TEACHING HIM NOT TO BE SCARED OR ELSE YOU WILL FALL BACK INTO THE WATER. THIS IS SYMBOLIC OF WHEN YOU ARE ASTRAL PROJECTING. WHEN YOU START TO FEAR WHEN YOU'RE PROJECTING, YOU WILL BE SUCKED BACK INTO YOUR BODY.

MATHEW 14:29

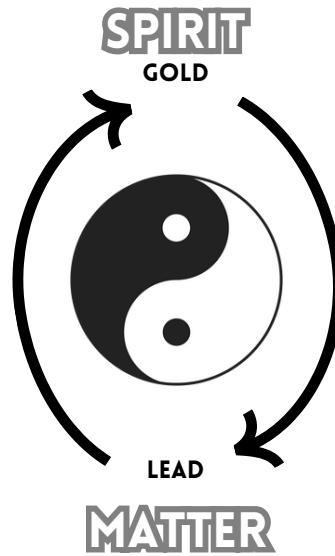
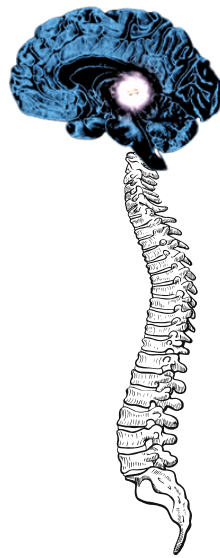
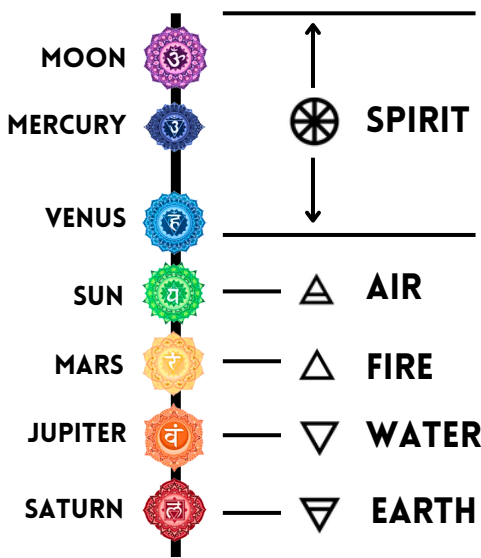
"HE WAS AFRAID AND, BEGINNING TO SINK, CRIED OUT, "LORD, SAVE ME!"

# CHAKARAS

CHAKARA IN SANSKRIT MEANS WHEEL. THE CHAKARAS ARE 7 WHEELS OF ENERGY THAT ARE A PART OF THE ELECTROMAGNETIC FIELD WE CALL OUR AURA. THE CHAKRAS ARE LIKE MINI-BRAINS CONTROLLING ALL THE CELLS AND ORGANS WITHIN THAT SECTION OF THE BODY OF THE BODY.

THE 7 CHAKARAS ARE THE 7 SEALS IN THE BIBLE. THE CHAKARAS ARE A PART OF THE ETHERIC BODY AS THEY ARE 7 SEALS THAT BIND YOUR SOUL/SPIRIT TO THE PHYSICAL BODY. THE LOWEST CHAKARA (ROOT CHAKARA) IS THE MOST DENSE/PHYSICAL, AND THE HIGHEST (CROWN CHAKARA) IS SPIRIT/FORMLESS. WE DESCENDED FROM SPIRIT INTO MATTER; NOW WE HAVE TO RETURN TO OUR SPIRIT SELF IN THE CROWN CHAKARA. THE CROWN CHAKARA IS LOCATED JUST ABOVE THE HEAD, OUT OF THE BODY BECAUSE ITS PURE SPIRIT.

OUR TRUE GOD SELF IS HIDDEN BEHIND THE 7 CHAKARAS, AS THE CHAKARAS CAN BE ABUSED OR BALANCED. WHEN WE BALANCE THE VICES OF THE CHAKARAS, WE BUILD A STRONG MIND AND SOUL CONNECTION, WHICH THEN MANIFESTS INTO OUR EXTERNAL WORLD. WHEN THE MIND & BODY MANIFEST THE SOUL/HIGHER SELF IDEAS 24/7, WE BECOME OUR TRUE GOD SELF, AND THERE ARE NO MENTAL OR ETHERIC BLOCKAGES WITHIN OUR DIFFERENT BODIES OF CONSCIOUSNESS.



"144,000 GO TO HEAVEN"

144,000  
ADD FIRST 5 PETALS

ROOT=4  
SACREL=6  
SOLAR=10  
HEART=12

THROAT=16

--

4+6+10+12=48

--

THIRD EYE=2 PETALS

--

48X2=96

96+48=144

--

CROWN=1000 PETALS

--

1000X144=144,000HZ

JAHOVAS WITNESS BELIEVE EXACTLY 144,000 FAITHFUL CHRISTIAN WILL GO TO HEAVEN. THIS IS A FREQUENCY YOU NEED TO ACHIEVE IN ORDER TO GO FROM THE ROOT TO THE CROWN CHAKRA (HEAD=HEAVEN)

A  
E  
I  
O  
U  
Y  
M



963hz

852hz

741hz

639hz

528hz

417hz

396hz

THERE ARE ACTUALLY 7 VOULS, AND EACH VOUL CORRESPONDS WITH ONE OF THE CHAKARAS. WHEN CHANTING THE VOULS CORRECTLY, IT CREATES THE PHONETIC SOUND OF "OHM". OHM IS KNOWN AS THE SOUND OF CREATION, AND WHEN WE SAY IT, WE ARE ALIGNING THE 7 CREATIONAL ENERGIES WITHIN OUR ETHERIC BODY. EACH CHAKARAS VIBRATES ON A DIFFERENT FREQUENCY, AND YOU CAN LISTEN TO THESE FREQUENCIES TO HELP BALANCE EACH CHAKARA.

MENTAL PLANE = THOUGHTS

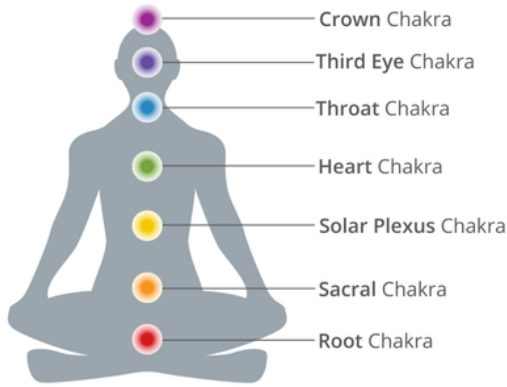
ASTRAL PLANE = IMAGINATION

ETHERIC PLANE = ENERGY

PHYSICAL PLANE = MATTER

THE ETHER IS THE 5TH ELEMENT, ALSO KNOWN AS SPIRIT. ITS A SUBSTANCE THAT HAS ONE FOOT IN THE ASTRAL PLANE AND IN THE PHYSICAL PLANE. ETHER IS THE WORD EITHER BECAUSE ITS ON EITHER SIDE. THE CHAKRAS ARE ON THE ETHERIC PLANE, AND WHEN WE UNLOCK THESE CENTRES, WE UNLOCK OUR TRUE SPIRIT FORM.

# CHAKARAS



I KNOW  
I SEE  
I SPEAK  
I LOVE  
I DO  
I FEEL  
I AM

## HOW TO KNOW YOUR PASSING THROUGH CHAKARAS

**ROOT** = YOU WILL NO LONGER FEAR AND FEEL STABLE  
**SACREL** = NO LONGER HAVE LUST/DESIRE FOR SEX  
**SOLAR** = NO LONGER DESIRE FOR FOOD  
**HEART** = NO LONGER HATE ANYTHING/ANYONE  
**THROAT** = NO LONGER HOLD YOURSELF BACK TO EXPRESS YOURSELF  
**THIRDEYE** = HAVE THE ABILITY TO READ PEOPLES ENERGY, INTUITION AND ASTRAL PROJECTION.  
**CROWN** = AT ONE WITH EVERYTHING, NO NEGATIVE TRATES, NO EGO, NO HATE, NO DESIRE FOR METERIAL THINGS, NO ATTACHMENT TO ANYTHING.



**Crown Chakra** - Universal Consciousness, All Knowing, Cosmic Connection, The God Source, Enlightenment, Gateway to other Dimensions.



**Third Eye** - Psychic Abilities, Channeling, Telepathy, Astral Travel, Visions, Connections to Higher Self.



**Throat Chakra** - Communication, Sound, Vibration, Self-Expression, Listening, Speaking, Writing.



**Heart Chakra** - Love, Understanding, Trust, Hope, Openness, Compassion, Balance, Forgiveness.



**Solar Plexus** - Personal Power, Will, Energy, Metabolism, Effectiveness, Self Esteem, Social Identity, Happiness.



**Sacral Chakra** - Emotions, Relationships, Sexuality, Self Worth, Creativity, Empathy.



**Root Chakra** - Grounding, Stability, Physical Needs, Security, Survival, Manifestation, Material World.

THE HIGHER 3 CHAKRAS ARE THE HIGHER STATES OF CONSCIOUSNESS WHERE YOUR MIND IS NO LONGER MANIFESTING WHATEVER THE LOWER SELF DESIRES. THE MIND HAS BECOME DISCIPLINED AND CARRIES OUT MORE SPIRITUAL DESIRES LIKE FASTING, MEDITATION, ASTRAL PROJECTION, ENERGY HEALING, AWAKENING THE THIRD EYE & SAVING SEXUAL ENERGY TO ACTIVATE THE KUNDALINI. THE SOUL AND THE MIND HAVE GAINED A STRONG CONNECTION, AND THE MIND IS MANIFESTING WHAT THE SOUL WILLS TO DO.

## DEUTERONOMY 20:17

"COMPLETELY DESTROY THEM—THE HITTITES, AMORITES, CANAANITES, PERIZZITES, HIVITES AND JEBUSITES—AS THE LORD YOUR GOD HAS COMMANDED YOU"

-GOD SUPPOSEDLY OREDER FOR THE CANANITES, AMORRITES AND HITTITIES TO BE "DESTROYED" BUT AS WE KNOW THAT WOULD BE MURDER WHICH GOD DOES NOT CONDEM ONTO ANY MAN. -CANANITES, AMORRITES AND HITTITIES SYMBOLISE MANS LOWER NATURE AS THEY WERE CANIBALS AND MURDERES. -SO THIS IS SYMBOLIC FORDESTROYING YOUR LOWER/ANIMAL NATURE AND TURNING TO YOUR HIGHER/SPIRIT SELF.

THE LOWER 3 CHAKARAS ARE THE LOWEST STATES OF CONCIOUNESS WHERE YOU IDENTIFY AS THE PHYSICAL BODY (MATTER OVER MIND). THE MIND AND BODY ARE OPERATING IN SURVIVAL MODE, MEANING YOU ARE DOING WHATEVER THE BODY DESIRES. AN EXAMPLE OF THIS IS EATING WHENEVER THE STOMACH RUMBLES, RELEASING SEXUAL FLUIDS WHENEVER YOU FEEL LIKE IT, ETC. THIS STATE OF CONSCIOUSNESS IS MANIFESTING HELL.

## UNBALANCED CHAKARAS

-OVERUSING OR INCORRECT USAGE OF THE ENERGY CENTRES WILL RESULT IN UNBALANCED CHAKARAS, WHICH BLOCK THE FLOW OF ENERGY WITHIN THE ELECTROMAGNETIC FIELD OF THE BODY. THIS RESULTS IN A LOWER FREQUENCY AS YOU ARE PULLING TOO MUCH ENERGY OUT OF YOUR FIELD. -FOR EXAMPLE, IF YOU ARE OVERSEXUAL, YOU ABUSE YOUR SACREL CHAKARA, WHICH IS WEAKENING YOUR FIELD.

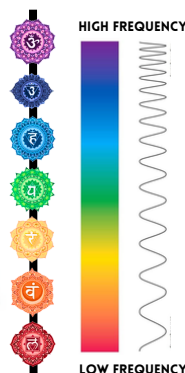


## BAPHOMET SYMBOLOGY

THE BAPHOMET/DEVIL HAS A GOAT HEAD TO SYMBOLIZE THE ANIMAL NATURE OF MAN. THE BAPHOMET IS HOLDING THE RIGHT HAND UP FOR THE RIGHT-HAND PATH (ASCENSION) AND THE LEFT HAND DOWN FOR DESCENSION. THE BAPHOMAT IS NOT A REAL ENTITY; IT SYMBOLIZES AN INDIVIDUAL'S MINDSET. THE BAPHOMAT IS BOTH MALE AND FEMALE, SYMBOLIZING DIVISION AND INVERSION OF GOD'S CREATION.

GOD IS ONENESS, MEANING HE IS GENDERLESS. OUR CONSCIOUSNESS IS GENDERLESS, MEANING WE ARE A SPARK OF GOD; GOD IS CONSCIOUSNESS. WE COME FROM THE ONE, AND WE INCARNATE INTO DUALITY TO GAIN THE KNOWLEDGE OF GOOD AND EVIL.

THE CROWN CHAKARA IS THE ONLY CHAKARA LOCATED OUT OF THE PHYSICAL BODY. THIS IS DUE TO IT BEING PURE SPIRIT, MEANING IT IS NOT A PART OF THE DUALISTIC/ PHYSICAL WORLD; IT IS ONENESS.



NOTICE HOW THE MAJORITY OF FAST-FOOD RESTAURANT SYMBOLS ARE RED, ORANGE, OR YELLOW. THIS IS BECAUSE THEY UNDERSTAND THAT 80% OF PEOPLE'S MINDS MANIFEST THE DESIRES OF THE LOWER 3 CHAKRAS. THE MINDS THAT OPERATE ON THEIR LOWER FREQUENCIES WILL BE ATTRACTED TO THE COLOURS OF THEIR LOWER FREQUENCIES. PLUS, THE SO-CALLED "FOOD" THE RESTAURANTS SUPPLY IS KEEPING THEM STUCK IN THE LOWER 3 CHAKARAS (SURVIVAL MODE).

THE WORD HUMAN COMES FROM THE WORD HUE, WHICH MEANS AN ATTRIBUTE OF A COLOUR. EACH ONE OF US OPERATES WITHIN A FREQUENCY, AND THAT FREQUENCY IS A COLOUR WITHIN THE ELECTROMAGNETIC LIGHT SPECTRUM. WE ARE AN ATTRIBUTE OF A SPECIFIC COLOUR BASED ON WHAT OUR MIND IS SETTING OUR FREQUENCY TO. THIS IS WHY WE CALL IT A MINDSET YOUR MIND SETS ITSELF TO VARIOUS FREQUENCIES.



# CHAKARAS

## Psychological Signs of Blocked Chakras

**Root Blocked**

- Overly fearful about security and survival
- Ungrounded
- Flighty
- Generally fearful
- Feeling of not belonging anywhere
- Poor health

**Or**

- Overly practical
- Lacking dreams and imagination
- Habitual
- Tied down
- Difficulty letting go

**Heart Blocked**

- Loneliness
- Lack of emotional fulfillment and
- Difficulty accepting or giving love
- Lack of compassion

**Or**

- Unhealthy relationships
- "Loving too much"
- Love manifesting at a low vibration

**Or**

- A lack of sense of connection to the divine or to nature
- Unresolved sorrow

**Third Eye Blocked**

- Lack of imagination
- Lack of vision
- Lack of concentration
- Blocked or clouded intuition
- Can't see "big picture"

**Or**

- Distorted vision
- Delusional
- Distorted imagination
- Misuse of intuition

**Or**

- Overly reliant on logic and intellect

**Sacral Blocked**

- Emotionally cold
- Difficulty changing
- Difficulty experiencing joy
- Holds back

**Or**

- Hyper-emotional
- Overly sexual
- Overly focused on physical pleasure
- Guilt

**Throat Blocked**

- Inability to communicate ideas
- Problems with self-expression (expression of own truth)
- Problems with creativity

**Or**

- Uncontrolled
- Low-value
- Inconsistent communication
- Manipulative
- Deceptive of self or others

**Crown Blocked**

- Ungrounded
- Impractical
- Indecisive
- Difficulty with finishing things
- No common sense
- Depressed
- Alienated
- Confused

**Or**

- Cut off from spirituality
- Plagued by sense of meaninglessness
- Delusional
- Grandiose

## SIGNS OF BLOCKED ENERGY

*Dissociation* \*  
*No Spiritual Side* \*  
*Aimless* \*  
*Too Individualistic* \*  
*Disconnect from Earth* \*

*Timid* \*  
*Talk First Think Later* \*  
*Dishonesty* \*  
*Trouble Communicating* \*  
*Can't Speak Up* \*

*Low Libido* \*  
*Isolation* \*  
*Lack Of Creativity* \*  
*Fear, Anxiety* \*  
*Toxic Relationships* \*

*Poor Body Image* \*  
*Feeling Stuck* \*  
*Financial Issues* \*  
*Disconnected* \*  
*Insecure of Self* \*

\* *Uncertainty*  
 \* *Lack of Purpose*  
 \* *Narrow Mindedness*  
 \* *Feeling Lost In Life*  
 \* *Disconnect from Intuition*

\* *Loneliness*  
 \* *Hard to Empathize*  
 \* *Guarded Heart*  
 \* *Holding a Grudge*  
 \* *Shyness*

\* *Feeling Powerless*  
 \* *Indecisive*  
 \* *Poor Digestion*  
 \* *Aggressive*  
 \* *Competitive*

PAGE 243 FIGURE 11:11 FROM THE BOOK "BECOMING SUPERNATURAL"--AUTHORED BY DOCTOR JOE DISPENZA



SEVEN UP IS TRUTH IN PLANE SITE.

## FROM THOUGHT TO ENERGY MATTER

*Unified Field-Singularity-Oneness-Source Energy-Observer*  
*Every Body • Every One • Every Thing • Every Where • Every Time*

<b>Conscious Thought</b>		<b>WHOLENESS, BLISS, FREEDOM, LOVE, JOY</b>
<b>Energy</b>		<b>APPRECIATION</b>
<b>Speed of Light</b>	<i>No Body • No One • No Thing • No Where • No Time</i>	<b>GRATITUDE</b>
<b>Patterns</b>		<b>WILL</b>
		<b>POWER</b>
		<b>CONTROL</b>
		<b>ANGER</b>
<b>Form</b>		<b>FEAR</b>
		<b>GUILT</b>
		<b>SHAME</b>
		<b>SUFFERING</b>
		<b>VICTIMIZATION</b>
<b>Matter</b>		<b>PAIN</b> <b>LUST</b>

*Some Body • Some One • Some Thing • Some Where • Some Time*

NOTICE HOW LUST IS THE LOWEST VIBRATIONAL EMOTION. THIS IS WHY LUST FOR SEX IS PUSHED UPON US BY THE MUSIC INDUSTRY, ESPECIALLY RAP MUSIC. ANYTHING THAT IS FREE, YOU ARE THE PRODUCT; THIS IS WHY PORN IS FREE BECAUSE IT WASTES YOUR SEED, KEEPING YOU IN THE LOWEST VIBRATIONAL STATE OF LUST.

# HAND & FEET CHAKARAS

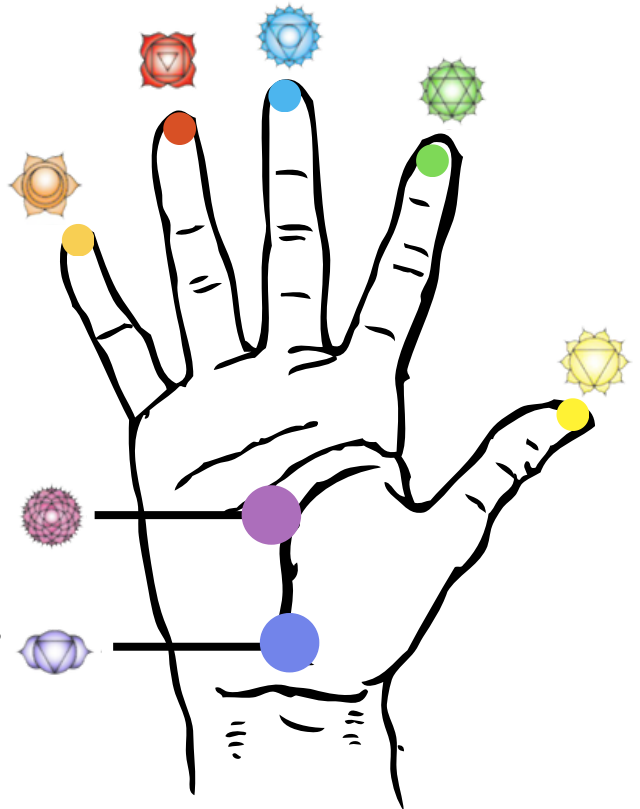
THE 7 CHAKRAS ARE NOT LIMITED TO THE SPINE BUT EXTEND THEIR INFLUENCE TO THE HANDS. THEY MANIFEST IN THE FOLLOWING ASSOCIATIONS:

- MANIPURA (SOLAR PLEXUS)= THUMB.
- ANAHATA (HEART) = INDEX FINGER.
- VISHUDDHI (THROAT) = MIDDLE FINGER.
- MULADHARA (ROOT) = RING FINGER.
- SWADHISTHANA (SACRAL) = FINGER.
- SAHASRARA (CROWN) = PALM
- AJNA CHAKRA (THIRD EYE) = WRIST POINT

THIS ARRANGEMENT RESULTS IN A HARMONIOUS BALANCE ON THE HAND, WHERE THE RING AND LITTLE FINGERS EMBODY FEMININE QUALITIES, WHILE THE THUMB AND INDEX FINGER EXUDE MASCULINE ATTRIBUTES. ADDITIONALLY, A CENTRAL AXIS EXTENDS FROM THE WRIST POINT, PASSING THROUGH THE CENTER OF THE PALM AND REACHING UP TO THE MIDDLE FINGER, SYMBOLIZING THE SPIRIT ELEMENT. THIS CENTRAL AXIS SERVES AS A RECONCILING FORCE FOR THE CONTRASTING GENDER PRINCIPLES.

HAND CHAKRAS SERVE AS A VITAL INTERFACE BETWEEN THE PHYSICAL AND ENERGETIC DIMENSIONS, ALLOWING US TO ENGAGE WITH THE WORLD ON BOTH LEVELS. THE FINGERS FUNCTION AS SENSITIVE RECEPTORS, WHILE THE PALMS ACT AS CONDUITS FOR CHANNELING HEALING ENERGY. YOUR DOMINANT HAND SERVES AS THE SOURCE OF ENERGY EMISSION, WHILE THE NON-DOMINANT HAND ACTS AS THE RECIPIENT.

IN CONTRAST TO THE FEET, WHICH ARE ASSOCIATED WITH THE EARTH ELEMENT AND THE PHYSICAL BODY, THE HANDS CORRESPOND TO THE AIR ELEMENT AND THE REALM OF THE MIND, AS THEY ARE SUSPENDED IN THE AIR BEFORE US. CONSEQUENTLY, THE HAND CHAKRAS WIELD SIGNIFICANT INFLUENCE OVER THE INFORMATION THAT ENTERS OUR CONSCIOUSNESS.



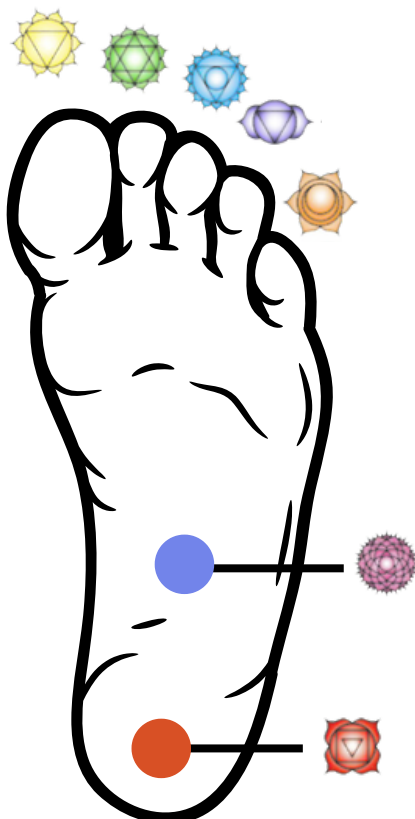
THERE EXISTS A NETWORK OF ENERGY CENTERS KNOWN AS MINOR CHAKRAS IN THE FEET (AS ABOVE SO BELOW). THESE MINOR CHAKRAS PLAY A HUGE ROLE IN FACILITATING A WIDE RANGE OF ENERGY INFLOW INTO THE HUMAN BODY AND CONSCIOUSNESS.

## FOOT AND CHAKARAS:

- MANIPURA (SOLAR PLEXUS) = BIG TOE.
- ANAHATA (HEART) = INDEX TOE.
- VISHUDDHI (THROAT) = MIDDLE TOE.
- AJNA (THIRD EYE) = FOURTH TOE.
- SWADHISTHANA (SACREL) FINDS RESONANCE IN THE LITTLE TOE.
- SAHASRARA (CROWN) = MIDDLE OF THE SOLE.
- MULADHARA (ROOT) = BACK OF THE HEEL.

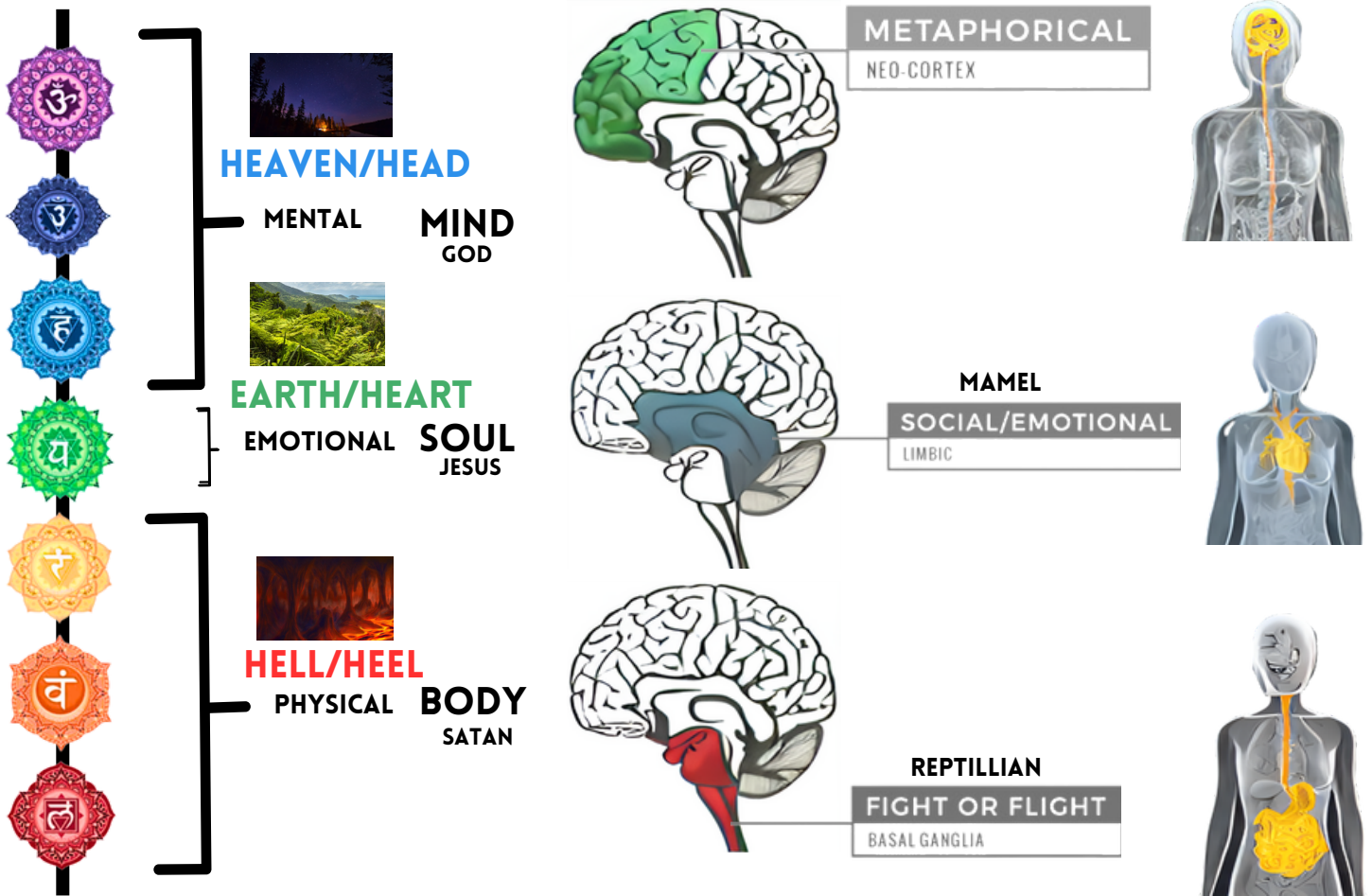
ONE OF THE PRIMARY FUNCTIONS OF THE TOES IS TO RELEASE AND DISCHARGE ANY SURPLUS ENERGY THAT ACCUMULATES WITHIN THE MAJOR CHAKRAS THROUGH OUR EVERYDAY ACTIVITIES AND BODILY FUNCTIONS. THIS EXCESS ENERGY IS CHANNLED INTO THE EARTH, FACILITATING A GROUNDING OF OUR CONSCIOUSNESS. WHEN THE MINOR CHAKRAS IN THE FEET OPERATE HARMONIOUSLY AND ARE IN ALIGNMENT WITH THE MAJOR CHAKRAS, IT ESTABLISHES A CONTINUOUS CONNECTION AND A FLOW OF COMMUNICATION BETWEEN THE EARTH'S ENERGY GRIDS AND OUR OWN ENERGIES.

ROOT CHAKARA CORRESPONDS WITH THE EARTH ELEMENT AS ITS THE MOST PHYSICAL/METERIALISTIC CHAKRA. THIS IS WHY HEEL IS HELL BECAUSE WHEN OUR MIND OPERATES OFF THE ROOT CHAKARA, WE DESIRE, FEAR, AND LACK INSECURITY. IN OTHER WORDS, WE MANIFEST HELL.

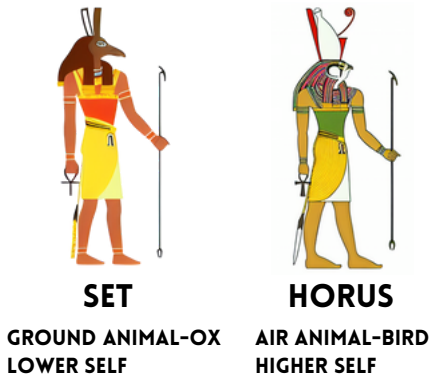


# HEAD IS HEAVEN

THE 3 BRAINS CONTROL THE 3 SECTIONS OF THE BODY

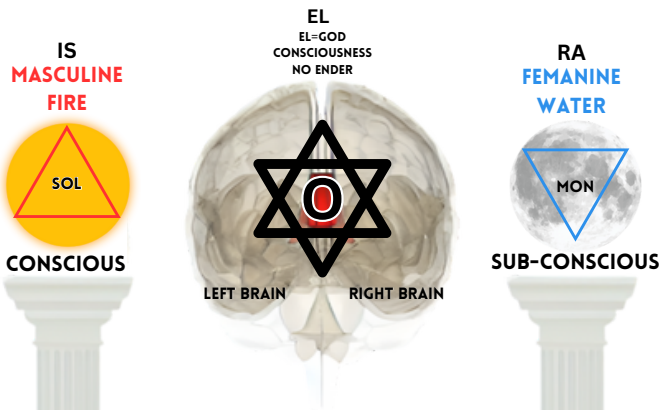


NOTICE HOW THE LANDSCAPE OF THE EXTERNAL WORLD MATCHES UP WITH THE CHAKRA SYSTEM. LAVA IS UNDER GROUND WHICH IS RED AND CORRESPONDS WITH THE ROOT CHAKARA (HELL). THE SKY IS BLUE AND CAN TURN PURPLE AT NIGHT, WHICH SYNCS IN WITH THE HIGHER THREE CHAKARAS. THE EARTH IS GREEN, AND THE HEART CHAKARA IS GREEN, AS ABOVE AND BELOW.

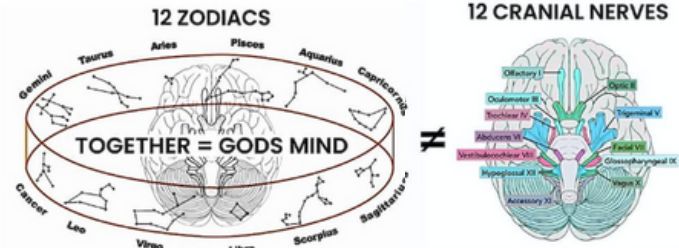


THE DEVIL HAS GROUND ANIMAL FEATURES SYMBOLIZING THE LOWER SELF. THE ANGEL HAS WINGS WHICH ARE BIRD FEATURES SYMBOLIZING HIGHER SLEF. THE ELITES IN CONTROL HAVE EXTERNALIZED THIS METAPHYSICAL CONCEPT TO JESUS AND SATAN TO MAKE PEOPLE LOOK OUTSIDE OF THEMSELVES. THIS RESULTS IN LACK OF AWARENESS OF THERE OWN CONSCIOUSNESS WHICH THEN CREATES A SOCIETY OPERATING THERE LIVES OUR OF THE LOWER CHAKARAS

# HEAD IS HEAVEN



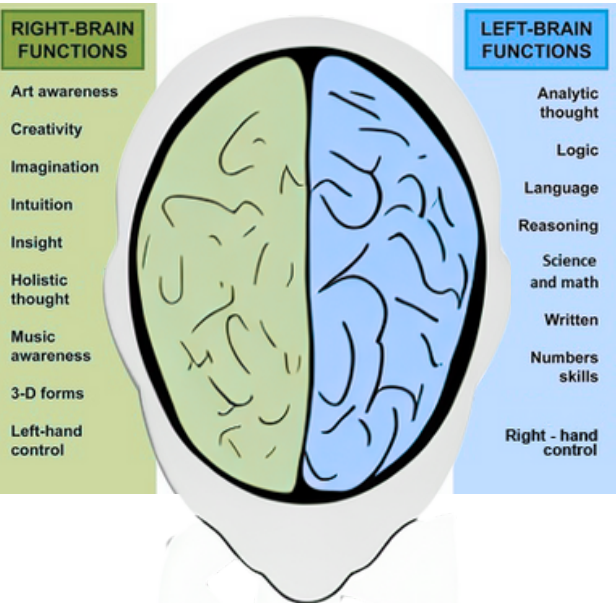
## 'MANKIND IS GOD MADE FLESH' (macrocosm & microcosm)



-IN THE BIBLE THE HEAD IS REFERED TO AS THE **UPPER ROOM** WHERE JESUS MET THE 12 DISCIPLES. THE 12 DISCIPLES ARE THE 12 CRANIAL NERVES IN THE BRAIN WHICH ARE THE 12 ZODIAC SIGNS.



-MOSES CROSSING THE RED SEA IS MOVING YOUR PERCEPTION/AWARENESS INTO THE RIGHT HEMISPHERE OF THE BRAIN. THE RED SEA IS THE CORPOS COLLOSUM, WHICH CONNECTS THE TWO HEMISPHERES OF THE BRAIN. THE RIGHT HEMISPHERE SHOWS THE UNIFIED PERCEPTION OF REALITY. IT IS THE PLACE OF YOUR HIGHER SELF.



### RIGHT BRAIN

THE RIGHT BRAIN IS THE FEMANINE ASPECT OF THE BRAIN. IT CREATES A WHOLISTIC PERCEPTION OF REALITY WHERE ALL THINGS ARE UNITED AND ONENESS. IT IS ALSO THE PLACE OF OUR INTUITION, CREATIVITY, AND INSIGHT. FOR EXAMPLE, THIS SIDE OF THE BRAIN VIEWING HUMANS AS ONE UNITED CONSCIOUSNESS.

### LEFT BRAIN

THE LEFT HEMISPHERE IS THE ANALYTIC SIDE OF THE BRAIN. IT BREAKS DOWN THE UNITED PERCEPTION OF THE RIGHT HEMISPHERE INTO SINGULAR SEGMENTS. THIS IS IMPORTANT AS IT GIVES US THE ABILITY TO BREAK THINGS DOWN AND MANIPULATE THEM. THE LEFT BRAIN IS THE MASCULINE SIDE, AND IT IS THE PLACE OF THE EGO. THE LEFT BRAIN SEES HUMANITY AS INDIVIDUALS AND NOT UNIFIED LIKE THE RIGHT BRAIN.

SIN IN LATIN IS SINISTER MEANS LEFT  
RIGHT = RIGHTIOUS

### THE ARK OF THE COVENENT=TWO HEMISPHERES OF THE BRAIN



THE **TWO ANGLES** COVERING THE COVENENT ARE THE **TWO HEMISPHERES OF THE BRAIN** COVERING (PROTECTING) THE SACRED CENTRE OF THE BRAIN. THE CENTRE OF THE BRAIN IS THE "MOST HOLY HOUSED" IN THE BIBLE. THIS PLACE IS THE THRONE OF GOD/CONSCIOUSNESS WITHIN THE PINEAL GLAND.

- SPOTIFY, RADIO, APPLE MUSIC, AND ALL MAJOR PLATFORMS ARE TUNED TO 440HZ. 440HZ SHUTS OFF THE RIGHT SIDE OF THE BRAIN, RESULTING IN YOU BEING LEFT-BRAIN DOMINANT. THEY DO NOT WANT YOU TO BE BALANCED OR RIGHT BRAIN DOMINANT DUE TO IT BEING THE CREATIVE, INTUITIVE, AND UNIFIED PART OF THE BRAIN.
- THE ROCKEFELLA FOUNDATION IN THE 1950S CHANGED THE STANDARD MUSIC TUNING FROM 432HZ TO 440HZ.
- THIS IS TO KEEP YOU THINKING LOGICALLY INSTEAD OF CRITICALLY.
- FREQUENCY IS THE ONLY THING THAT ENTERS YOUR TEMPLE WITHOUT CONSENT, AFFECTING YOU NO MATTER WHAT. THIS IS WHY MUSIC IS ONE OF THEIR MOST POWERFUL TOOLS
- INSTEAD, YOU WANT TO LISTEN TO MUSIC/FREQUENCIES IN 432HZ/528HZ/963HZ OR ANY OF THE SOLFEGGIO SCALE FREQUENCIES.

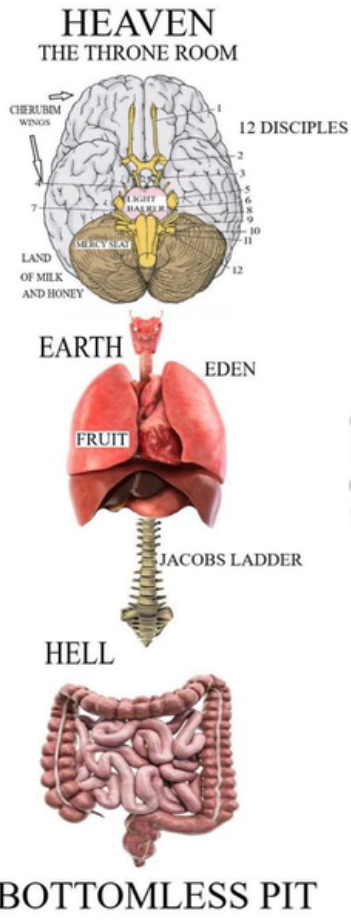
### THE SOLFEGGIO SCALE



- 3+9+6=18=9
- 4+1+7=12=3
- 5+2+8=15=6
- 7+4+1=12=3

IF YOU ADD ANY OF THE SOLFEGGIO SCALE FREQUENCIES UP THEY ALL ADD TO 3,6 OR 9

# HEAD IS HEAVEN



**HEAD  
HEAVEN**

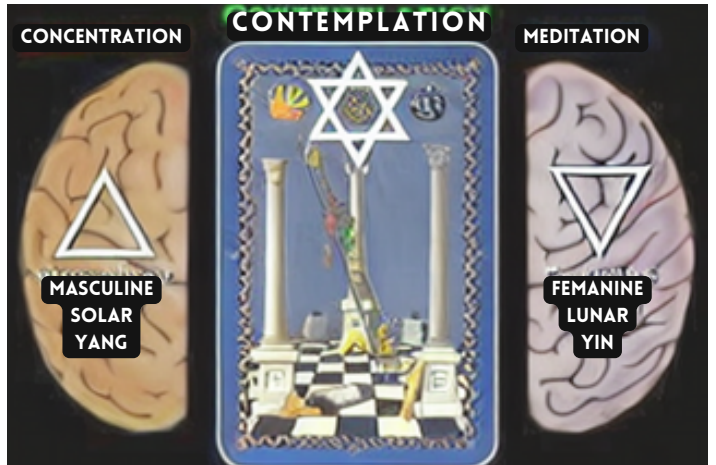


**HEEL  
HELL**

# HEAD=HEA=HEAVEN

GOD (HIGHER SELF) IS REACHING/ STRETCHING OVER TO TRY TO CONNECT WITH ADAM (LOWER SELF), AND ADAM IS RELAXED, SHOWING NO EFFORT. THIS PAINTING IS SHOWING ALL YOU HAVE TO DO MOVE UP TO THE HIGHER MIND TO REACH YOUR HIGHER SELF. THE HIGHER SELF IS ALWAYS SPEAKING AND GIVING COMMANDS, BUT THE LOWER SELF DOMINATES. ALL YOU HAVE TO DO IS FOLLOW THE COMMANDS OF THE HIGHER SELF (HIGHER MIND/THOUGHTS).

THE HEAD IS HEAVEN BECAUSE IT IS THE PLACE OF CONSCIOUSNESS IN THE CENTRE OF THE BRAIN. THE PINEAL GLAND IS THE PLACE OF THYNE CONSCIOUSNESS, AND IT HAS ACCESS TO THE ASTRAL PLANE.



# EARLY CHRISTIAN ARTWORK



The ventral view of the brain, (the brain seen from underneath), shows the clear correspondence between Ganesh and the pons, medulla, and cerebellum. The face of Ganesh corresponds to the pons. The medulla represents the trunk of Ganesh. The roots of the trigeminal nerves represent the eyes of Ganesh. A group of nerves at the pons represent the tusks of Ganesh. The cerebellum constitutes the ears of Ganesh. These structures not only look like Ganesh, but their functions in human physiology correspond to the functions and activities ascribed to Ganesh. (Human Physiology: Expression of Vedic Literature.)

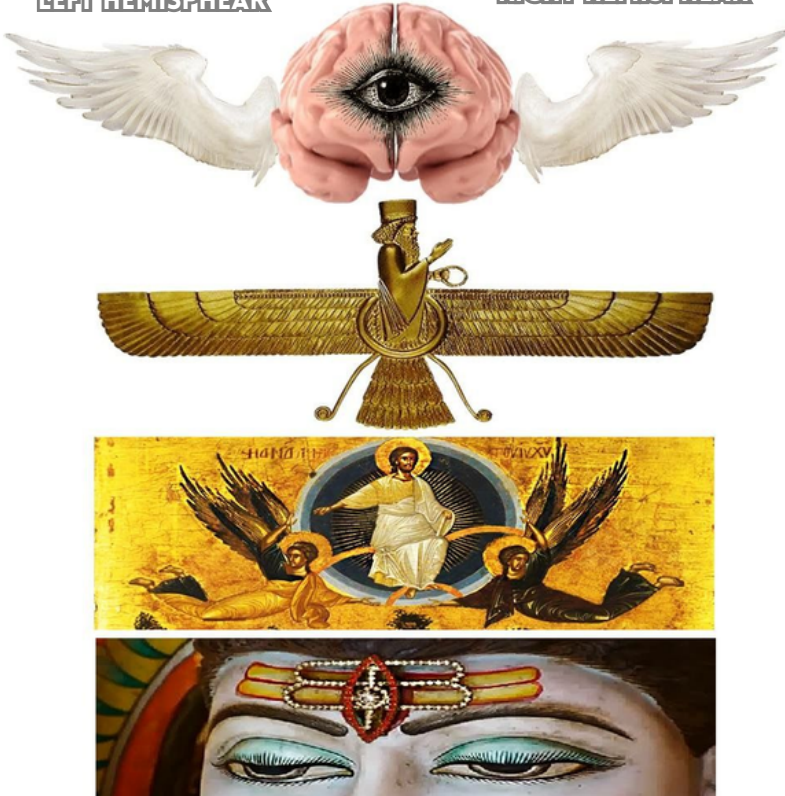


# HEAD IS HEAVEN

OBSERVER/INNER  
BEING/CONCIOUSNESS

LEFT HEMISPHEAR

RIGHT HEMISPHEAR



OBSERVER/INNER  
BEING/CONCIOUSNESS

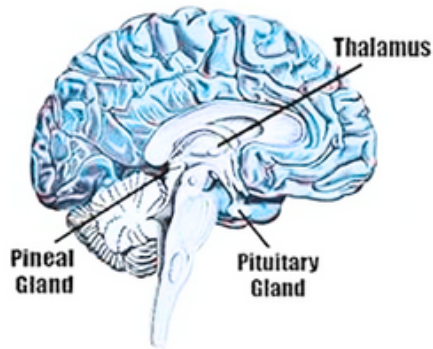


LEFT HEMISPHEAR

RIGHT HEMISPHEAR



HOLY GRAIL



Inner  
Bird



EGYPTIAN  
FALCON OF  
HORUS

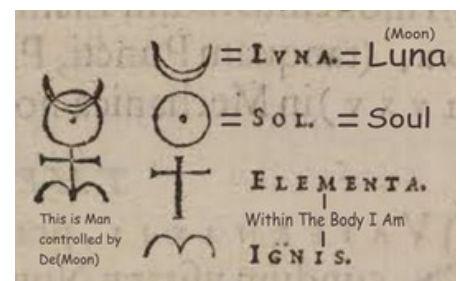
EGYPTIAN DJED PILLAR  
CENTRAL NERVOUS SYSTEM



TWO HEMISPHERES

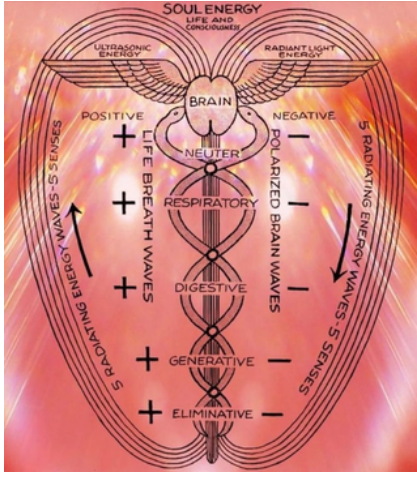
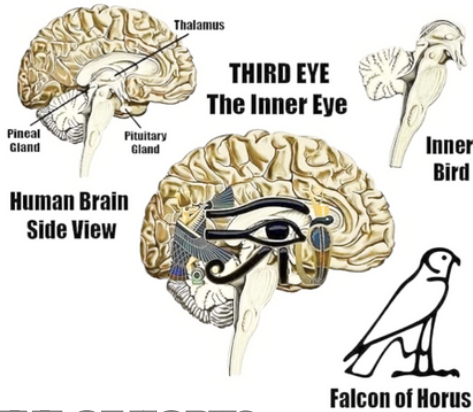
SOUL/CONCIOUSNESS

SPINE



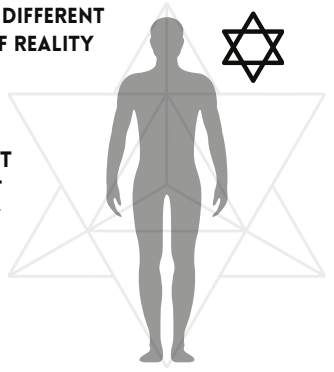
# KNOW THYSELF

## THE EYE OF HORUS/FALCON



## MERKABA

CELESTIAL SPHERE TO PORTRAY DIFFERENT PLANES OF REALITY



MER=LIGHT  
KA=SPIRIT  
BA=BODY

VEHICLE OF ASCENSION

NEUTRALIZING THE DUALITY OF SELF BY COMBINING THE UPPER AND LOWER SELF. YOU ARE A SOUL THAT EXPERIENCES DIFFERENT REALITIES WITHIN THE MULTI-VERSE. IN EACH PLANE YOU TAKE ON DIFFERENT BODIES. YOUR AIM IS TO BECOME A MULTI-DIMENSIONAL CREATURE AND NOT TO BE BOUND TO JUST ONE REALITY.

## EYE OF HORUS



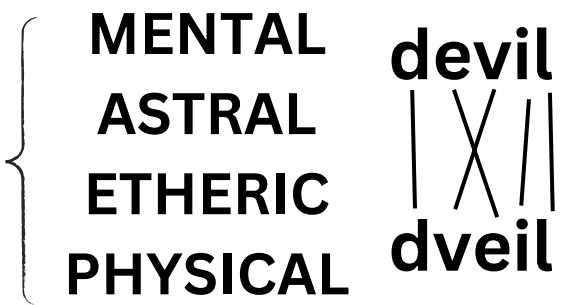
- 1/2 = Smell
- 1/4 = Sight
- 1/8 = Thought
- 1/16 = Hearing
- 1/32 = Taste
- 1/64 = Touch

- HORUS IS THE SUN
- SUN=SOL=SOUL
- YOU ARE AN ETERNAL SUN/SOUL
- THE SINGLE EYE IS THE SYMBOL OF THE SOUL
- EYE OF THE SOUL
- 5 SENSES OF THE SOUL

## CONSCIOUSNESS

THE BODY DOES NOT LIVE. IT IS ONLY MAINTAINED BY THE SPIRIT/CONSCIOUSNESS WITHIN. JESUS SAID, "MAN WILL NEVER SEE DEATH, FOR THERE IS NO DEATH TO SEE OR KNOW." THE BODY MANIFESTS THE SPIRIT; THAT WHICH WE THINK OF AND WILL TO DO MANIFESTS THE BODY TO DO SO. ACTIONS OF THE BODY ARE UNDER THE COMMAND OF THE CENTERING SOUL. THE BODY IS AN ELECTRICAL MACHINE THAT TAKES COMMANDS FROM THE OMNIPOTENT COSMIC INTELLIGENCE.

VEILS



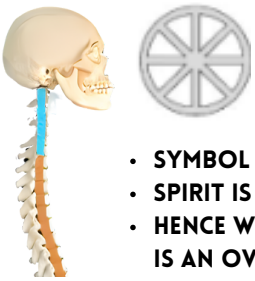
TO THINK IS TO CREATE. WE CREATE WITH LIGHT; NOTHING IS NOT LIGHT. THE FORM IS BORN IN THE IMAGE OF THINKING. I ALONE EXIST; I AM THE ALL.

MAN IS THE ONLY UNIT OF CREATION THAT IS SELF-AWARE OF THE COSMIC LIGHT WITHIN HIM. ALL ELSE ARE ELECTRICALLY ACTING BASED UPON INSTINCT.

THE DEVIL IS ACTUALLY YOU DE-VEILING YOURSELF INTO THE LOWER PLANES OF EXISTENCE BY IGNORANCE OF TRUTH AND KNOWLEDGE. WHEN YOU DIE UNDER A FALSE IDENTITY OF SELF YOU HAVE NOW ADDED ANOTHER VEIL ON TOP OF YOUR TRUE SOUL SELF.

**K**  
KOPH=K

**ק**  
SKULL



- SYMBOL FOR SPIRIT
- SPIRIT IS IN THE HEAD
- HENCE WHY THE HEAD IS AN OVAL/CIRCLE

CORINTHIANS 3:16-17  
16 KNOW YE NOT THAT YE ARE THE TEMPLE OF GOD, AND THAT THE SPIRIT OF GOD DWELLETH IN YOU?  
17 IF ANY MAN DEFILE THE TEMPLE OF GOD, HIM SHALL GOD DESTROY; FOR THE TEMPLE OF GOD IS HOLY, WHICH TEMPLE YE ARE.

PSALM 82:6  
I HAVE SAID, YE ARE GODS; AND ALL OF YOU ARE CHILDREN OF THE MOST HIGH.

## 22 HEBREW LETTERS=22 BONES IN THE SKULL

כ	י	ט	ח	ז	ו	ה	ד	ג	ב	א
chaf / kaf	yod	tet	chet	zayin	vav	hey	dalet	gimmel	vet / bet	alef
ch / k	y	t	ch	z	v	h	d	g	v / b	(silent)
ת	ש	ר	ק	צ	פ	ע	ס	נ	מ	ל
tav	shin	resh	koof	tzade	fey / pey	ayin	samech	nun	mem	lamed
t	s / sh	r	k	tz	f / p	(silent)	s	n	m	l

# LEFT AND RIGHT BRAINS

LEFT HEMISPHERE

RIGHT HEMISPHERE

SCIENTIST  
 CONTROLS RIGHT SIDE OF THE BODY  
 LANGUAGE  
 THE PLACE OF THE EGO  
 LOGICAL THINKING  
 SEQUENCING  
 FACTS  
 MATERIALISTIC  
 LETTERS  
 ANALYTIC  
 PERCEIVES REALITY IN USEFULNESS  
 DETAILS



ARTIST  
 CONTROLS LEFT SIDE OF THE BODY  
 CREATIVITY  
 HOLISTIC PERCEPTION  
 UNIFICATION  
 NON VERBAL CUES  
 INTUITION  
 FEELINGS  
 VISUALIZATION  
 PATTERNS  
 SPEECHLESS  
 METAPHORES  
 SYMBOLS  
 ACCEPTS REALITY AS IT IS  
 CONTEXT

BOTH HEMISPHERES PARTICIPATE AND CONTRIBUTE TO ALL ACTIVITIES; HOWEVER, THEY DO THE ACTIVITY IN DIFFERENT WAYS. IN OTHER WORDS, BOTH BRAINS CARRY OUT THE SAME FUNCTIONS BUT FUNCTION IN TWO DISTINCT AND DIFFERENT WAYS. BOTH BRAINS HAVE SEPARATE VIEWS AND PERCEPTION OF THE WORLD.

THE RIGHT BRAIN PRESENTS REALITY AS A UNIFIED WHOLE, WHICH EXPLAINS WHY THE PEOPLE IN POWER HAVE SPLIT UP ALL THE FIELDS OF KNOWLEDGE INTO DIFFERENT CATEGORIES WHEN IT IS ALL ACTUALLY ONE UNIFIED SCIENCE, WHICH IS DONE INTENTIONALLY TO KEEP US LEFT-BRAIN DOMINANT. ALL THINGS COME FROM THE ONE THEREFORE ALL IS ONE. THIS IS WHY THE EGYPTIANS STATED "ALL IS ATUM," MEANING ALL IS ATOM, THE TORUS FIELD. FOR EXAMPLE, THE RIGHT BRAIN WOULD SEE A JUNGLE AS A UNIFIED ENTITY, BUT THE LEFT BRAIN WILL SEE THE JUNGLE TREES AS SEPARATE BEINGS.

THE LEFT BRAIN'S PURPOSE IS TO ANALYZE AND BREAK DOWN THE UNIFIED WHOLE PRESENTED BY THE RIGHT BRAIN. THIS PROCESS IS DONE BY THE LEFT HEMISPHERE SO THAT WE CAN HAVE DISTINCT SINGULAR FRAGMENTS OF REALITY SO THAT IT CAN MANIPULATE, MANAGE AND CONTROL IT. BOTH HEMISPHERES ARE NEEDED FOR US TO FUNCTION WITHIN THIS CREATION; HOWEVER, WE MUST BALANCE THESE TWO ASPECTS OF THE BRAIN SO THAT WE DON'T BECOME LEFT OR RIGHT-BRAIN DOMINANT.

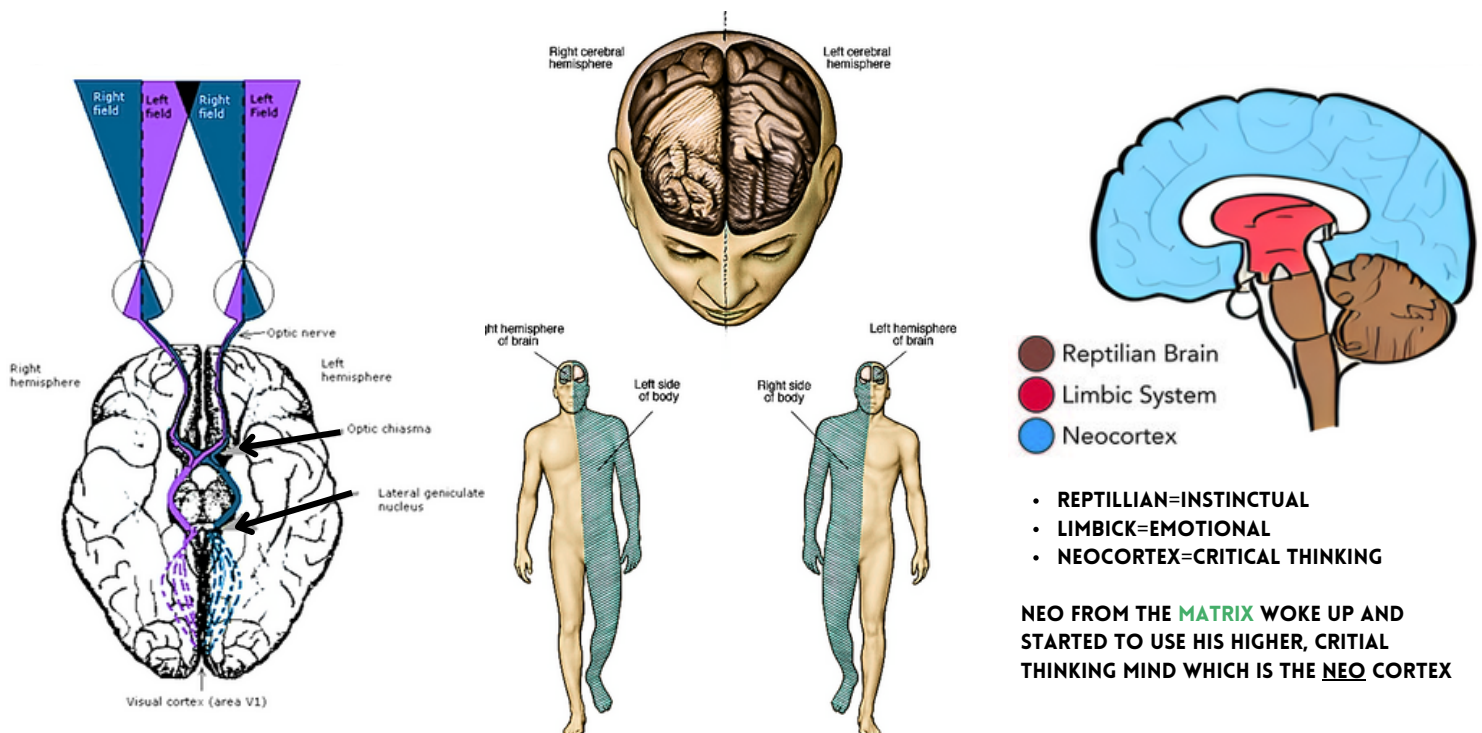
THE LEFT BRAIN MAINTAINS A SENSE OF DETACHMENT FROM THE DIRECT EXPERIENCE TO EXERT CONTROL OVER IT, WHILE THE RIGHT BRAIN STAYS IN THE PRESENT MOMENT AND WHOLEHEARTEDLY EXPERIENCES IT. THE RIGHT BRAIN RELIES ON THE LEFT BRAIN BECAUSE ITS HOLISTIC PERCEPTION WHILE CAPTURING THE ESSENCE OF THE WHOLE MAY LACK PRECISION AND CLARITY. THE LEFT BRAIN REQUIRES THE RIGHT BRAIN BECAUSE ALTHOUGH IT PRODUCES MENTAL CLARITY, IT CAN LOSE SITE OF THE CONNECTION BETWEEN ALL THINGS AND TRAP THE INDIVIDUAL IN A FRAGMENTED WORLDVIEW.

## JOHN 21:6

"CAST THE NET ON THE RIGHT-HAND SIDE OF THE BOAT, AND YOU WILL FIND FISH."  
 MOVE INTO THE RIGHT HEMISPHERE OF THE BRAIN AND YOU WILL FIND GOD/ UNIFICATION/ HIGHERSELF.

## MARK 16:19

"SO THEN AFTER THE LORD HAD SPOKEN UNTO THEM, HE WAS RECEIVED UP INTO HEAVEN, AND SAT ON THE RIGHT HAND OF GOD"  
 RIGHT HAND OF GOD IS THE RIGHT HEMISPHERE. HEAD IS HEAVEN, SAME ROOT WORD=HEA





# ELEMENTS



Earth



Water



Fire



Air



Ether

THE BASE OF ALL PHYSICAL MATTER IS THE EATHER, ALSO KNOWN AS SPIRIT OR AETHER. IT IS A SUBSTANCE THAT IS EVERYWHERE BUT NOWHERE AT THE SAME TIME. IT HAS ONE FOOT IN THE PHYSICAL WORLD AND IN THE ASTRAL PLANE, IT'S ON EITHER SIDE. THE WORD ETHER IS EITHER.

THE ETHER IS INFINITE POTENTIAL THAT CONSTANTLY MANIFESTS AND UNMANIFESTS ITSELF CYCLICALLY. THE AETHER IS THE HIDDEN ENERGY THAT VIBRATES TO CREATE THE "PHYSICAL WORLD WE SEE AND KNOW. WE ARE LIKE FISHES IN AN OCEAN, SURROUNDED BY AN ENERGETIC FLUID SUBSTANCE THAT WE CAN SEE OR TOUCH. ALL THINGS ARE FEEDING OFF THE ENERGY OF THE INFINITE ETHER.

THE 4 ELEMENTS ARE THE 4 VIBRATIONAL STATES OF THE ETHER.

-NONE OF THE ELEMENTS ARE PURE; THEY ARE COMPOSED OF EACH OTHER BY TRANSMUTATION.

-ALL OF THE ELEMENTS ARE BORN FROM THE 1ST ELEMENT ETHER (SPIRIT).

-THE 4 PHYSICAL ELEMENTS ARE THE 4 VIBRATIONAL STATES OF THE ETHER. EARTH HAS THE SLOWEST VIBRATION, AND FIRE IS THE QUICKEST.

-EACH ELEMENT SHARES ONE CHARACTERISTIC WITH THE ONE NEXT TO IT.

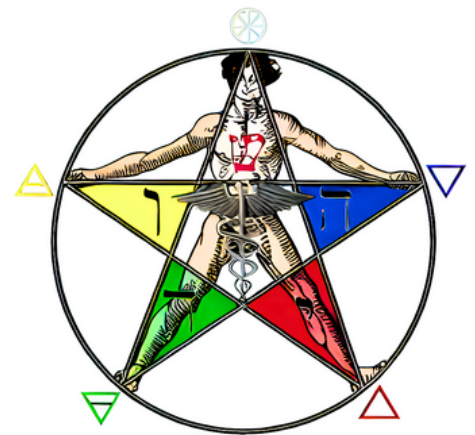
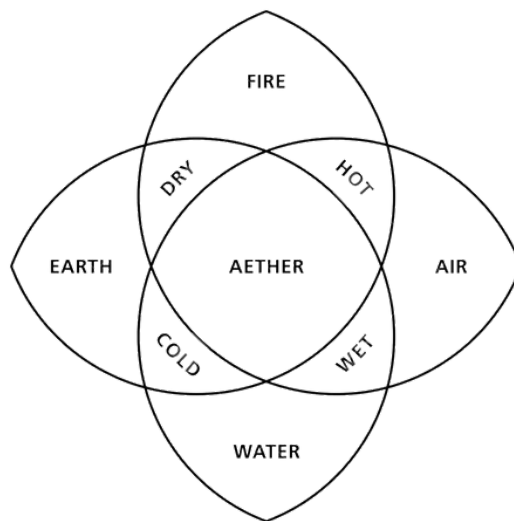
## PLATOS ASPECT

FIRE=SHARPNESS, THINNESS, MOVEMENT

EARTH=DULLNESS, THICKNESS, REST

AIR=THINNESS, MOVEMENT, DULLNESS

WATER=DULLNESS, THICKNESS, MOVEMENT



## FEMALE MALE

WATER

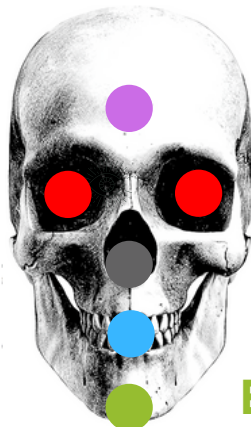
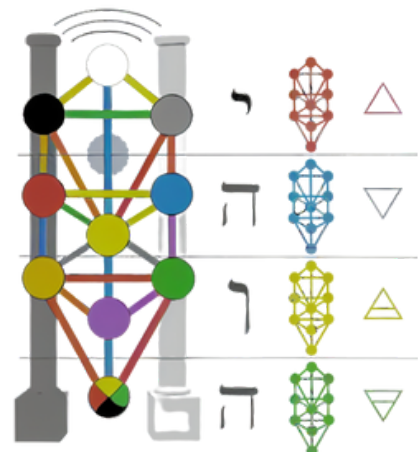
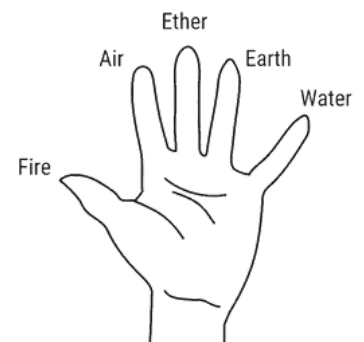
FIRE

EARTH

AIR

PASSIVE

ACTIVE



**SPIRIT**

**FIRE=LIGHT**

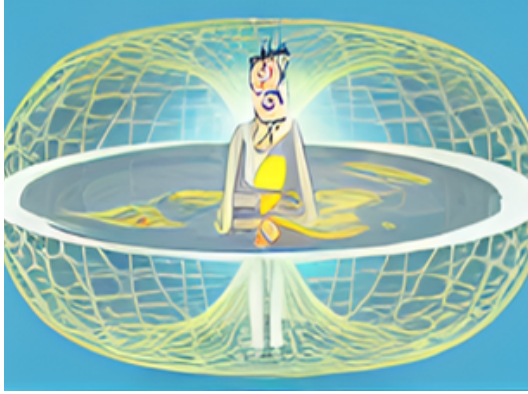
**AIR=BREATH**

**WATER=LIQUID**

**EARTH=BOTTOM OF JAW**

THE ELEMENTS ARE ALWAYS IN THIS ORDER BECAUSE IT STARTS WITH THE DENSEST (EARTH), THEN ON TOP OF THE EARTH LIES WATER, THEN ON TOP OF WATER IS THE AIR, AND ON TOP OF THE AIR IS FIRE (HEAT RISES), THEN ON TOP OF FIRE IS SPIRIT/ETHER.

# FLAT HEARTH



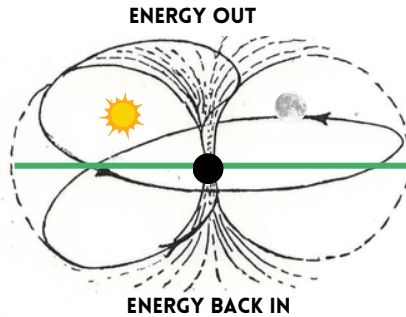
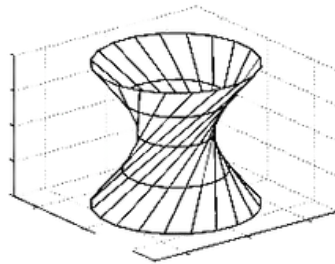
ELECTROMAGNETIC FIELDS ARE RESPONSIBLE FOR ALL OF THE CREATION. THE NEUTRAL, ZERO PLANE OF EVERY ELECTROMAGNETIC FIELD IS THE BIRTH OF PHYSICAL MATTER. MATTER IS A RESULT OF TWO OPPOSING FORCES EQUALIZED ON THE PLANE OF INERTIA (NEUTRAL POINT OF THE FIELD). THE EARTH IS THE PLANE OF INERTIA OF ITS GIANT ELECTROMAGNETIC TORODIAL FIELD. THE PLANE OF INERTIA IS WHERE WE GET THE PHRASE "PLANET EARTH" FROM.





THE AT THE CENTRE OF EVERY ELECTROMAGNETIC FIELD IS MAGNETIC WHITE LIGHT. THIS IS THE MOST MAGNETIC POINT WITHIN THE FIELD. AT THE CENTRE OF THE EARTH IS THE CENTRE OF THE EARTH'S MAGNETIC FIELD. THIS IS WHERE ALL OF THE ENERGY IS BEING DRAWN BACK TO AND SPAT BACK OUT. THIS MIDDLE POINT OF A TORUS FIELD IS CALLED A HYPERBOLOID.

THE SUN, MOON, STARS, AND PLANETS ARE STIRED BY THE ROTATING, RECIPROATING HYPERBOLOID AT THE CENTRE OF EARTH'S MAGNETIC FIELD (THE NORTH POLE). THIS IS WHAT MAKING THIS MOTION OF THE DAILY CYCLE.



**HYPERBOLOID**  
MACROCOSM-CENTRE OF EARTH  
MICROCOSM-CENTRE OF BODY (HEART)






-  =NORTHPOLE
-  =EARTH
-  =MOON
-  =SUN

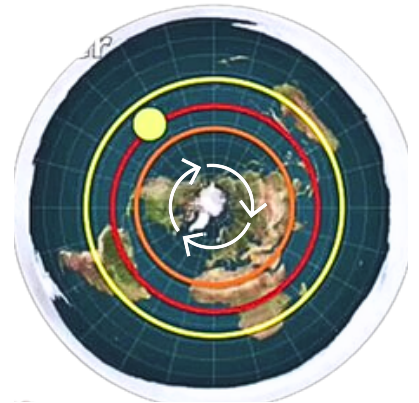
HYPERBOLOIDS ARE AN INVERSE OF A SPHEAR.

THE MAGNETIC NORTH POLE IS THE CENTRE OF THIS FIELD. THE MOST MAGICAL POINT IN THE FIELD. THIS IS WHERE THE ETHER IS GETTING STIRED AND CREATING THE 4 ELEMENTS FROM OUT OF COUNTER-SPACE.

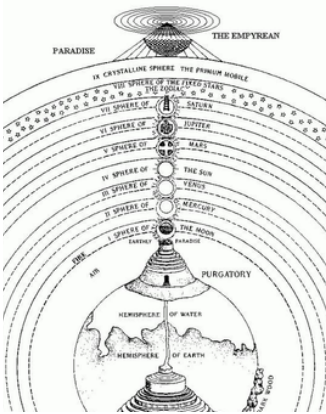
SUN=ELECTRIC AND POSITIVLY CHARGED. IT CHARGES YOU UP. MASCULINE

MOON=MAGNETIC IS MAGNETIC IT IS NEGATIVELY CHARGED MAKING YOU GO TO SLEEP. FEMANINE

-  TROPIC OF CAPRICORN
-  EQUATOR
-  TROPIC OF CANCER



THE SUN CREATES THE 4 SEASONS BY SPINNING INWARD TO THE TROPIC OF CANCER, WHICH IS SUMMER FOR THE NORTHERN LANDS. AFTER THIS, IT WILL THEN START TO SPIRAL OUTWARDS TOWARDS THE TROPIC OF CAPRICORN, WHICH WILL THEN BE FURTHER AWAY FROM THE NORTHERN LANDS, CREATING THE SEASON OF WINTER.



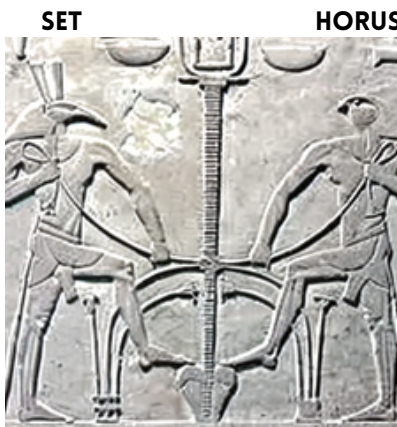
THE START IS THE STARS AS THEY ARE THE START OF THE SOUL SYSTEM

STAR=START  
STAIR=STARS  
THE STAIRWAY TO HEAVEN IS THE STARWAY TO HEAVEN.

EARTH=HEART BECAUSE ITS THE HEART (MIDDLE) OF THE SOUL SYSTEM

THE 7 LAYERS OF HEAVEN ARE THE 7 PLNETARY COSMIC ENERGIES KNOWN AS THE 7 ELOHIM. WHICH ARE THE 7 LAYERS OF THE SELF

THERE ARE LAYERS TO THE FIRMAMENT, AND EACH OF THE PLANETS IS ON THE LAYER. THIS EXPLAINS WHY THEY ALL HAVE DIFFERENT SPEEDS OF MOTION AND ALSO EXPLAINS WHY THE ANCIENTS CALLED THE PLANETS THE "7 WONDERERING STARS" AS THEY ARE NOT FIXED TO THE LIKE THE STARS.



SET

HORUS

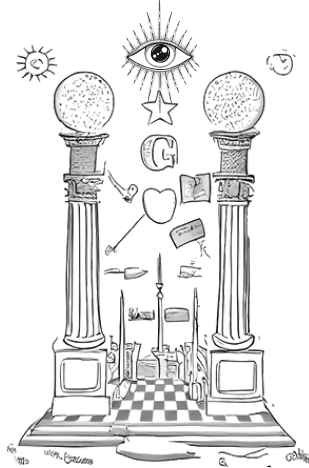
HERE YOU SEE HORUS AND SET PLACING THERE FEET INSIDE OF THE DOME. THE POLE THEY HAVE ROPE ATTACHED TO IS THE MAGNETIC NORTH POLE, WHICH THEY ARE BOTH PULLING, WHICH SYMOLIZES THE SPINNING OF THE NORTH POLE. HORUS SYMOLISES THE SUN, AND SET SYMOLISES THE MOON, AND THEY ARE BEING SPUN BY THE CENTRE POLE.

# HEARTH

**EARTH=HEART**

EARTH IS AN ANAGRAM FOR HEART

MOVE THE H TO THE BEGINNING AND EARTH BECOMES HEART. THE HEART IS THE MIDDLE OF THE BODY. HEART MEANS MIDDLE. THE EARTH IS THE HEART OF THE SOUL SYSTEM. IT IS THE BALANCED REALM BETWEEN GOOD AND EVIL. THIS IS WHY WE HAVE DUALISM HERE (GOOD AND EVIL).



FREEMASONS STAND ON THE BLACK AND WHITE CHECKERD BOARD, SYMBOLIZING DUALITY (GOOD AND EVIL). IT ALSO SYMBOLIZES SPIRIT (LIGHT) AND MATTER (BLACK) (YIN AND YANG).

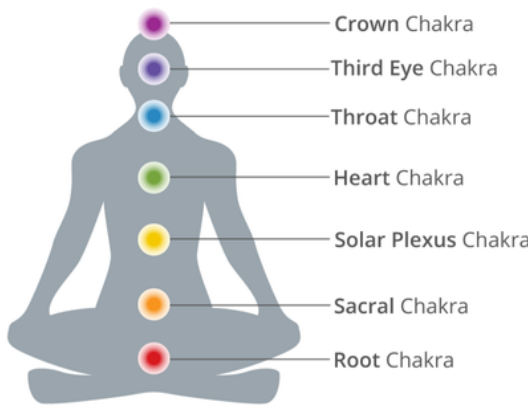
THEY ARE STANDING IN THE REALM OF GOOD AND EVIL, HOT AND COLD, DAY AND NIGHT, ETC...

SPIRIT=WHITE  
MATTER=BLACK

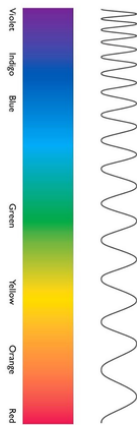
HENCE THE CUBE OF SATURN IS ALWAYS BLACK, SYMBOLIZING THE PHYSICAL 3D WORLD OF MATTER. ALL THINGS IN THIS WORLD ARE CUBES AND HAVE 6 SIDES. GO TO THE SATURN PAGES BELOW TO LEARN MORE.

EVERYTHING IS MADE OUT OF ELECTROMAGNETIC TORUS FIELDS. ITS AN ELECTROMAGNETIC WORLD. THE EARTH IS THE HEART, MEANING THE MIDDLE. THE MIDDLE OF THE ELECTROMAGNETIC COLOUR SPECTRUM IS GREEN. THE EARTH IS GREEN, AND THEN ABOVE THE GREEN EARTH IS THE BLUE SKY. BLUE COMES AFTER GREEN ON THE LIGHT SPECTRUM.

THE WORLD WE SEE AROUND US IS ACTUALLY WITHIN US. WHEN WE ASTRAL PROJECT OURSELF OUTSIDE OF THE PHYSICAL BODY, WE ARE INDEED LEAVING THE PHYSICAL PLANE WE CALL EARTH AND ENTERING THE ASTRAL PLANE. HEAVEN IS ABOVE EARTH, THROUGH THE BLUE SKY. THIS CORRESPONDS WITH THE 7 MAJOR CHAKARAS WITHIN US. IN ORDER TO GO TO HEAVEN THROUGH THE BLUE SKY, WE GO THROUGH THE BLUE CHAKARA TO OUR HEAD. HEAD AND HEAVEN ARE THE SAEM ROOT WORDS. YOUR HEAD IS HEAVEN BECAUSE IT IS THE PLACE OF THYNE CONSCIOUSNESS/TRUE FORM.



HIGH FREQUENCY  
LOW RANGE

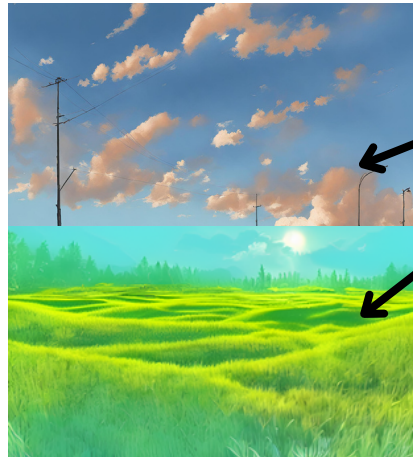


LOW FREQUENCY  
HIGH RANGE

HIGH FREQUENCY  
LOW RANGE



LOW FREQUENCY  
HIGH RANGE



-SKY IS BLUE  
-BLUE COMES AFTER GREEN

-EARTH=HEART=CENTRE.  
-EARTH/NATURE IS GREEN WHICH IS THE HEART OF THE COLOUR SPECTRUM

-EARTH IS THE BALANCE POINT THATS WHY ITS DUALISTIC (GOOD & BAD)

## SOLAR SYSTEM IS SOUL SYSTEM

-ITS A SOUL SYSTEM NOT A SOLAR SYSTEM.  
-EARTH IS THE HEART OF THE SOUL SYSTEM AS IT IS IN THE MIDDLE OF THE SYSTEM.

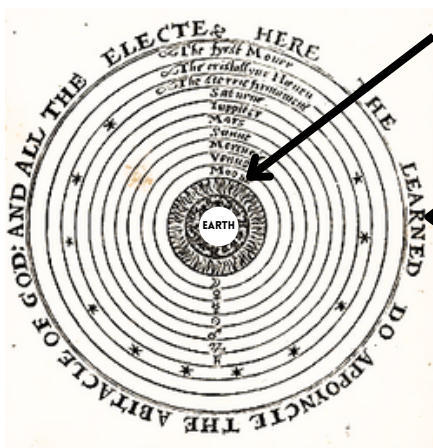
THE 7 PLANETS COME FROM THE 7 COLOURS OF THE ELECTROMAGNETIC COLOUR SPECTRUM. EACH PLANET GIVE OFF CERTAIN FREQUENCY OF LIGHT WHICH INFLUENCE THE MIND UNTIL WE OUTGROW MATTER AND TURN TO SPIRIT (GROW TO THE HIGHEST STATE OF CONSCIOUSNESS).

SATURN=SATAN  
THE LORD OF THE RINGS

QUARAN 65:12

65:12) Allah it is He Who created seven heavens, and, like them, the earth.<sup>23</sup>

EACH PLANET HAS THEIR LAYER OF THE FIRMAMENT WHICH EXPLAINS THE VARIOUS SPEEDS OF THE CELESTIAL BODYS DOING THEIR CYCLE.



A PERSIAN MINIATURE DEPICTING SEVEN HEAVENS

FROM THE HISTORY OF MOHAMMED, BIBLIOTHÈQUE NATIONALE DE FRANCE, PARIS. EACH PLANET HAS ITS LAYER OF THE SOUL SYSTEM, WHICH COULD BE A WHOLE OTHER REALITY.

THE WORD PLANET HAS A PLAN WITHIN IT, AND PLAN MEANS PLANE. ITS A FLAT PLANE JUST LIKE THE EARTH.

# FREEMASONIC COSMOLOGY

## GENESIS 1:3

"LET THERE BE **LIGHT**"

EVERYTHING IS MADE OUT OF LIGHT; THE UNIVERSE IS CREATED OUT OF LIGHT WAVES. THE TORUS FIELD IS ONE UNIT OF LIGHT. THE LIGHT PROJECTING THIS REALITY IS POLIRIS, SYMBOLISED AS THE FAMOUS LL SEEING EYE WITH LIGHT BEING PROJECTED AROUND IT.

## ISAIAH 40:22

HE SITS ENTHRONED ABOVE THE CIRCLE OF THE EARTH, AND ITS PEOPLE ARE LIKE GRASSHOPPERS. HE STRETCHES OUT THE HEAVENS LIKE A CANOPY, AND SPREADS THEM OUT LIKE A TENT TO LIVE IN.



## GENESIS 1:14

"GOD MADE THE **FIRMAMENT**, AND DIVIDED THE **WATERS** WHICH WERE UNDER THE FIRMAMENT FROM THE WATERS WHICH WERE ABOVE THE FIRMAMENT: AND IT WAS SO"

THE BOAT ON WATER SYMBOLIZES THE ETHERIAL WORLDS BEYOND THIS WORLD. IF YOU LOOK AT STARS WITH A TELESCOPE YOU CAN SEE THEM TWINKLE AS IF ITS LIGHT SHINING THROUGH WATER. THE STARS ARE LIGHT SHINING THROUGH THE ETHER ABOVE.

## CHECKERED BORED

THE BLACK AND WHITE CHECKERD SYMBOLIZES ALL DUALITIES WITHIN THIS DUALISTIC REALITY: SPIRIT (LIGHT) AND MATTER, REST AND MOTION, POSITIVE AND NEGATIVE ETC...

EARTH IS AN ANAGRAM FOR THE HEART. HEART IS THE MIDDLE OF THINGS SUCH AS THE BODY FOR EXAMPLE. THE HEART IS THE BALANCE POINT BETWEEN TWO OPPOSING POLES. EARTH IS THE WORLD BETWEEN HEAVEN AND HELL. HEAVEN BEING THE HIGHER WORLDS BEYOND THIS, HELL BEING THE WORLDS BELOW.

## CHRONICLES 16:30

"TREMBLE BEFORE HIM, ALL THE EARTH! THE WORLD IS FIRMLY ESTABLISHED; IT CANNOT BE MOVED"

## PSLAMS 104:5

"HE SET THE EARTH ON ITS FOUNDATIONS; IT CAN NEVER BE MOVED".

## REVELATION 7:1

"AFTER THIS I SAW FOUR ANGELS STANDING AT THE FOUR CORNERS OF THE EARTH, HOLDING BACK THE FOUR WINDS OF THE EARTH TO PREVENT ANY WIND FROM BLOWING ON THE LAND OR ON THE SEA OR ON ANY TREE."



## GENESIS 1:16

"AND GOD MADE TWO GREAT LIGHTS; THE GREATER LIGHT TO RULE THE DAY AND THE LESSER LIGHT TO RULE THE NIGHT" IN OTHER WORDS GOD CREATED THE SUN AND THE MOON. THE MOON EMITS ITS OWN LIGHT SOURCE, IT IS NOT REFLECTING THE SUNS LIGHT. THE SUN IS ELECTRIC/MALE. THE MOON IS MAGNETIC/FEMALE.

## GENESIS 1:6

"LET THERE BE A **FIRMAMENT** IN THE MIDST OF THE WATERS, AND LET IT DIVIDE THE WATERS FROM THE WATERS."

THE FIRMAMENT IS SYMBOLIZED BY THE MASONIC ROYAL ARCH. THE FIRMAMENT IS ALSO CALLED HEAVEN. HEAVEN HAS THE WORD EVEN WITHIN IT. EVEN=BALANCE. THE FIRMAMENT IS THE EVEN POINT BETWEEN THIS WORLD AND THE WORLD ABOVE

YOU HAVE TO BALANCE ALL ASPECTS OF LIFE, BALANCE THE TWO HEMISPHERES OF THE BRIAN, BALANCE THE CHAKRAS AND YOU WILL GO TO HEAVEN (HEAD/HIGHER MIND/HIGHER SLEF)

## 7 STARS

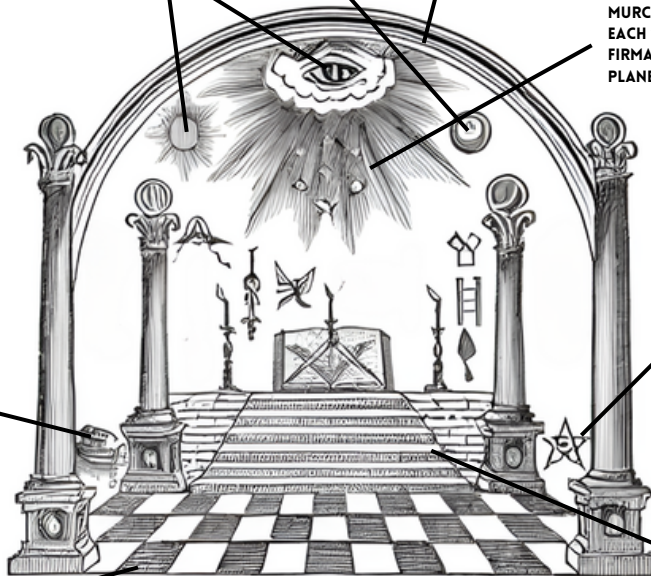
=THESE STARS SYMBOLIZE THE 7 PLANETS, ALSO KNOWN AS THE 7 WONDERERS OR THE 7 LAYERS OF HEAVEN: SATURN, JUPITER, MARS, SUN, VENUS, MURCERY, MOON. EACH 'PLANET' HAS ITS OWN LAYER OF THE FIRMAMENT PLANET=PLAN=PLANE

## 5 POINTED STAR

THIS SYMBOL IS CALLED A PENTICLE. IT IS A 5-POINTED STAR THAT SYMBOLIZES THE 5 ELEMENTS WITHIN THIS CREATION. SPIRIT ON THE TOP POINT BECAUSE ITS THE MOST IMPORTANT ELEMENT. SPIRIT IS ALSO ETHER. THE ETHER IS THE BASE OF ALL PHYSICAL MATTER. ETHER IS THE SUBSTANCE THAT CONNECTS THE PHYSICAL WORLD TO THE SPIRITUAL WORLD (ASTRAL). IT ALSO SYMBOLIZES THE 5 SENSES, WHICH ARE THE E 5 WAYS THE BODY REPORTS ELECTRICAL IMPULSES BACK TO THE PINEAL GLAND TO DECODE THE EXTERNAL WORLD.

## STAIRS

6 STAIRS, THE 7TH IS THE EARTH GROUND. ALL TOGETHER THOSE 7 STEPS. THERE ARE 7 STEPS WE HAVE TO STEP UP TO REACH OUR HIGHER SELF, WHICH IS THE 7 CHAKRAS. EACH CHAKARA IS ONE OF THE 7 "PLANETS".



THE LIGHTER SOMETHING IS THE HIGHER IT RISES. IT'S THE SAME WITH THE JOURNEY OF THE SOUL. THE MORE MATERIALISTIC THE SOUL GETS, THE LOWER THE WORLD IT FALLS DUE TO HEAVY ATTACHMENTS TO THE MIND. GREED, ENVY, LUST, AND THE OTHER SEVEN DEADLY SINS ARE INTERNAL STATES THAT MAKE YOUR SOUL MORE HEAVY AND BOUND TO THE EARTH AND BODY. YOU MUST QUELL ALL THE CHAOS OF THE EMOTIONS AND DETACH FROM THE EXTERNAL WORLD TO BECOME LIGHTER AND AT PEACE WITH ALL. THEN AND ONLY THEN SHALL THE SOUL PASS UPWARD TO THE LIGHT.

THE WORD REALITY IS SIMILAR TO REALIZE. YOUR LEVEL OF REALIZATION IS YOUR LEVEL OF REALITY. YOU CAN ONLY EXPERIENCE ONE REALITY AT A TIME.

## GENESIS 1:14

"AND GOD SAID, LET THERE BE LIGHTS **IN THE FIRMAMENT** OF THE HEAVEN TO DIVIDE THE DAY FROM THE NIGHT; AND LET THEM BE FOR **SIGNS**, AND FOR SEASONS, AND FOR DAYS, AND YEARS"

THE PHRASE 'LET THEM BE FOR SIGNS' IS TALKING ABOUT THE ZODIAC. THE STARS ARE SIGNS FOR WHAT IS TO COME.

FIRMAMENT COMES FROM THE LATIN WORD 'FIRUMS' MEANING FIRM. THE FIRMAMENT IS A FIRM ARCH/ SKY FAULT.

## QURAN 15:19

"AND THE EARTH WE HAVE SPREAD OUT (LIKE A CARPET); SET THEREON MOUNTAINS FIRM AND IMMOVABLE; AND PRODUCED THEREIN ALL KINDS OF THINGS IN DUE BALANCE."

## QURAN 71:19

"AND ALLAH HAS MADE THE EARTH FOR YOU AS A CARPET (SPREAD OUT)."

## TALAAQ 65:12

"IT IS ALLAH WHO HAS CREATED SEVEN HEAVENS AND OF THE EARTH THE LIKE THEREOF"



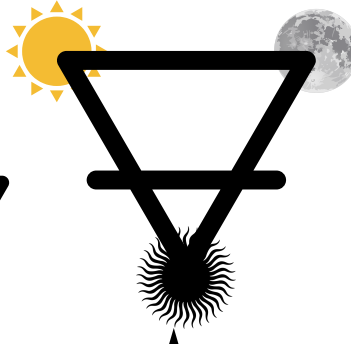
NOTICE HOW HIS HEAD IS PEAKING THROUGH THE ETHERIAL BARRIERS OF THE EARTH. THE HEAD IS THE PLACE OF CONSCIOUSNESS, AND IT HAS THE ABILITY TO SEE THE OTHER WORLDS. THIS IS WHY YOUR HEAD IS HEAVEN.

# COSMOLOGY

@REVIVALOFWISDOM

## ELEMENT SYBOLS

- △ FIRE
- △ AIR
- ▽ EARTH
- ▽ WATER



SUN

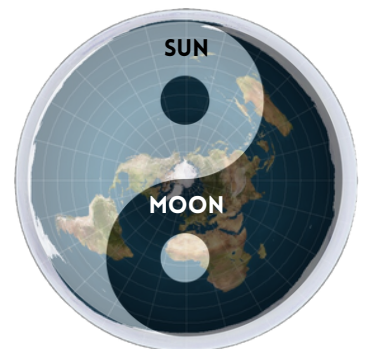
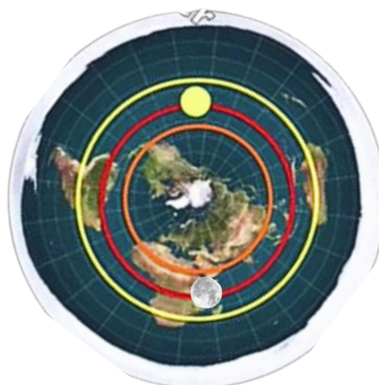
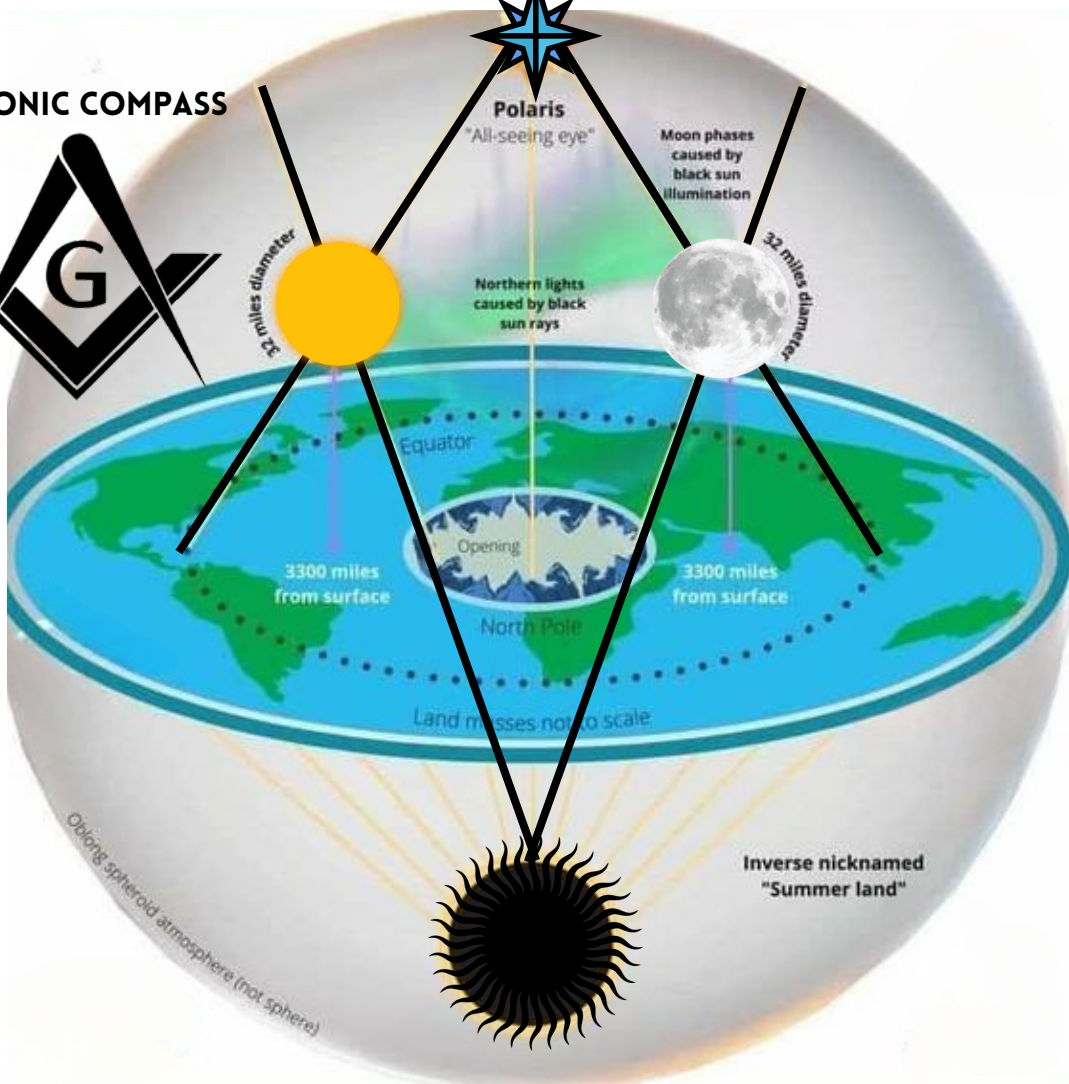


MOON

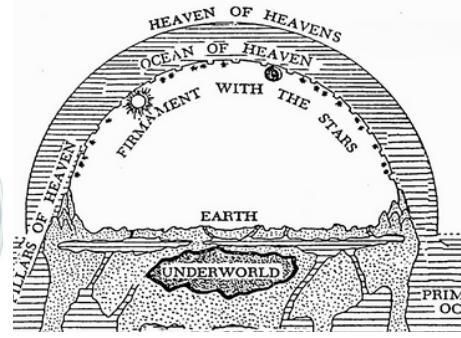
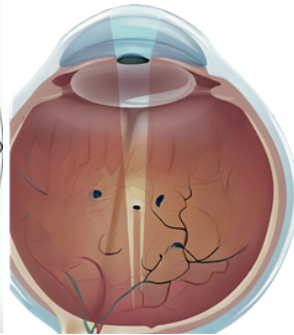
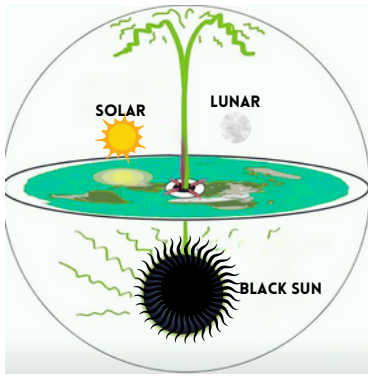


BLACK SUN

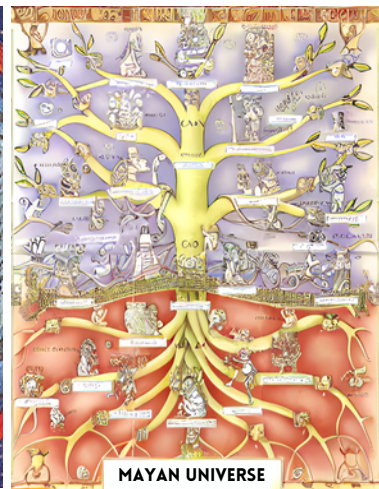
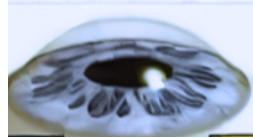
## MASONIC COMPASS



# AS ABOVE SO BELOW



**ISLAND=EYELAND**  
**PLANET=PLAN=PLANE**



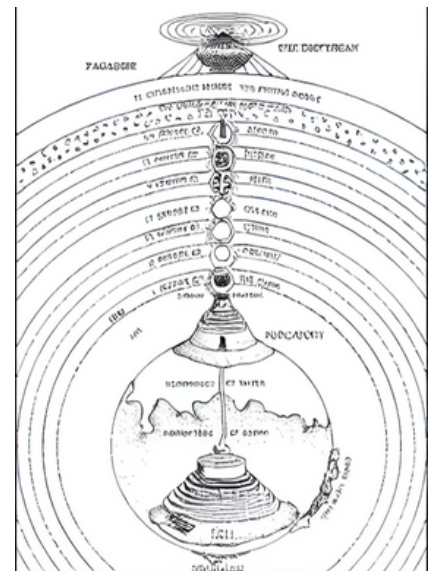
THE ANCIENTS SAID WE LIVE IN GUARD, WHICH IS A BALANCED REALM CONTAINING BOTH GOOD AND EVIL. THIS COULD BE WHY EARTH IS AN ANAGRAM FOR THE HEART, AS IT WOULD BE THE SYSTEM'S HEART. FOR THOUSANDS OF YEARS, PEOPLE BELIEVED IN HEAVEN AND HELL, WHICH COULD BE THE REALMS ABOVE AND BELOW US.



Hebrew



Tibetan

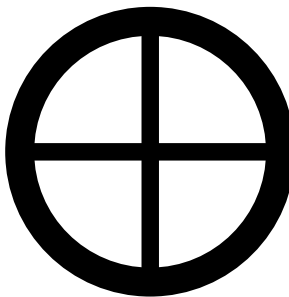


Chinese



Islam

ALCHEMICAL SYMBOL FOR EARTH



1500S-1600S NORTH POLE MAP



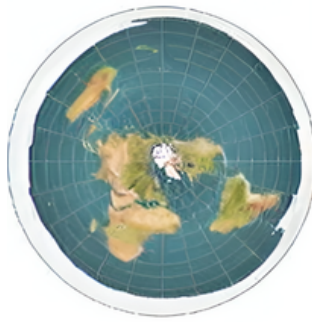
# HEARTH

## UNITED NATIONS LOGO

IMAGE SOURCE - <https://www.un.org/en/>  
 (THIS IMAGE WAS NOT CREATED BY  
 REVIVALOFWISDOM NOR DO I OWN THIS IMAGE)



## FLAT EARTH MAP



## HITLER USING 2 FLAT EARTH MAPS



## COMPASS

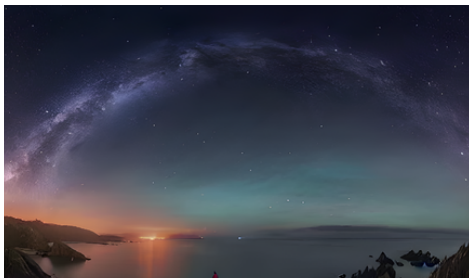


## POLARIS SYMBOL



POLARIS IS THE 8-POINTED STAR BECAUSE WE ARE INSIDE THE WORLD OF SPACE AND TIME. THERE ARE 8 POINTS OF SPACE AND TIME. POLARIS THE CENTRE AND HIGHEST STAR. WE SYMBOLIZE THIS TODAY WITH THE STAR ON TOP OF THE CHRISTMAS TREE. THE COMPASS IS THE 8 POINTED STAR BECAUSE IT POINTS YOU TO THE 8 POINTED STAR (THE CENTRE OF THE EARTH)

## STARS WITH NO LIGHT POLLUTION



## EGYPTIAN SKY GOD NUT



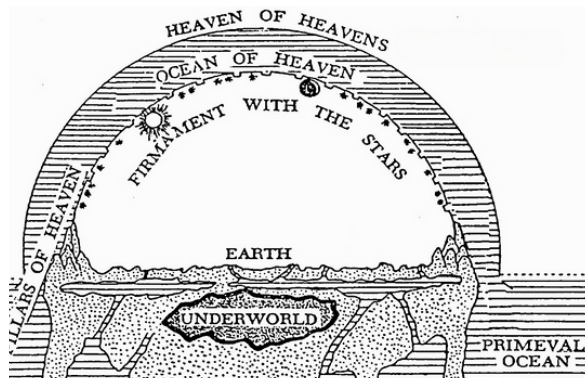
## FREEMASONIC ROYAL ARCH



## MAYAN COSMOS



## HEBREW COSMOS



THE EGYPTIN SKY GOD NUT IS SYMBOLIZING THE STAR CIELING ABOVE OUR HEADS. THIS WAS THEN LATER TURNED INTO THE ROYA ARCH IN FREEMASONRY.



## BIBLE=GENESIS 1:6-8

[6] And God said, Let there be a firmament in the midst of the waters, and let it divide the waters from the waters.

[7] And God made the firmament, and divided the waters which were under the firmament from the waters which were above the firmament: and it was so.

[8] And God called the firmament Heaven. And the evening and the morning were the second day.

## BIBLE JOB 37:18

18 Hast thou with him spread out the sky, which is strong, and as a molten looking glass?

## QUARAN 65:12

(65:12) Allah it is He Who created seven heavens, and, like them, the earth.<sup>23</sup>

THE 7 HEAVENS ARE THE 7 LAYERS OF THE FIRMAMENT