



WET TROPICS

ENHANCED EXTENSION COORDINATION

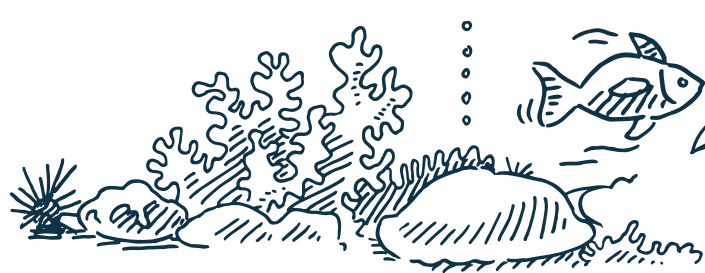
| **Summary**



Queensland
Government

FUNDED THROUGH THE QUEENSLAND GOVERNMENT
REEF WATER QUALITY PROGRAM

ENHANCED EXTENSION COORDINATION IN GBR PROJECT



**THIS PROJECT
SUPPORTS GROWERS
TO ACHIEVE REEF 2050 WATER
QUALITY TARGETS**

The **Enhanced Extension Coordination in GBR Project** is operating in six GBR Natural Resource Management regions in Queensland. In the Wet Tropics, the Regional Extension Coordinator is delivering the project in conjunction with the Wet Tropics Sugar Industry Partnership (WTSIP), while a Cane and Banana Regional Extension Working Group (REWG) supports improved coordination, collaboration and delivery of extension services.

SOME KEY PROJECT OUTCOMES:



- Enhanced planning, communication and delivery
- Framework to codesign and implement effective collaboration
- Collaborative partnerships/projects within and across industries
- Empowering local decision making
- Improving extension capacity and skills to support farmers
- Support for local projects that enhance extension engagement

BENEFITS...

FOR GROWERS:

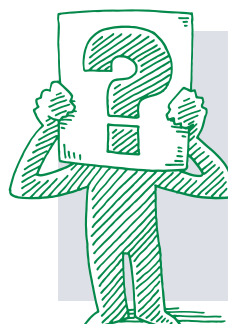
- ✓ Improved coordination and capacity of extension services
- ✓ On farm trials to explore solutions to local grower challenges
- ✓ Better access to information and highly skilled extension officers
- ✓ Opportunities for Peer to Peer learning through grower groups



Did you know funds have already supported 22 local projects including the purchase of three bean planters

FOR EXTENSION STAFF:

- ✓ Connection to cross industry, and cross regional/district extension networks
- ✓ Up-to-date information on project work, funding programs and opportunities to collaborate with colleagues
- ✓ Opportunities to be part of decision-making and coordinated program design
- ✓ Access to training and professional development opportunities and specialised expertise

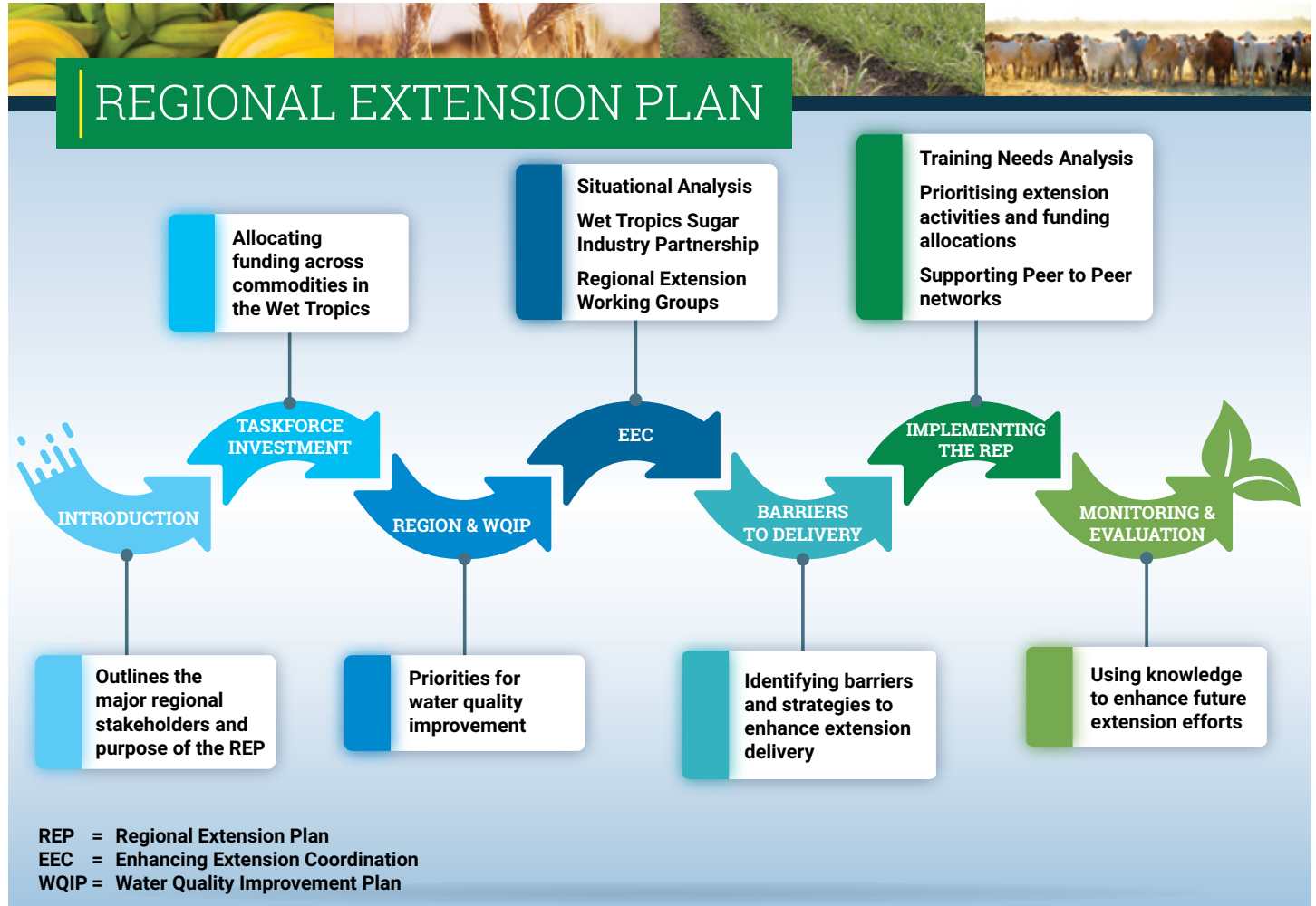


Funds have already supported training workshops in soil health, extension techniques, behavioural science and facilitation skills

REGIONAL EXTENSION PLAN

A Regional Extension Plan (REP) has been developed for all major commodities to improve the way people (and organisations) work together to deliver more targeted and appropriate extension services to growers, reduce duplication and fill local capacity/knowledge gaps.

Greater collaboration will enhance local extension capacity allowing growers and graziers to access the information, technology and technical support they need to make informed decisions and improve the long-term sustainability of their businesses.



BANANA AND SUGARCANE REGIONAL EXTENSION WORKING GROUP (REWG)

Banana and sugarcane growers have a wide range of extension providers including agribusiness, industry and research organisations, NRM bodies and government. The purpose of the REWG is to improve communication and collaboration across regions, districts and industries. Since there are similar challenges across the Wet Tropics and Cape

York NRM regions, the REWG is enabling ideas and knowledge to be shared across both regions.

The REWG has contributed to the development of the REP and either developed or assessed regionally relevant projects to be funded by the EEC project. The group is collaborating in the delivery of projects and/or local extension services to support growers.

CURRENT MEMBERS:

- Department of Agriculture and Fisheries – Banana and Cane
- Australian Banana Growers Council
- MSF Sugar
- Sugar Research Australia
- Canegrowers
- Herbert Cane Productivity Services Ltd
- Tully Sugar Ltd
- Tully Cane Productivity Services Ltd
- Terrain NRM
- Cape York NRM
- Wet Tropics Sugar Industry Partnership
- Regional Agriculture Landcare Facilitator (AG)

PROJECTS FUNDED IN THE WET TROPICS

All decisions on projects are made through representatives of the Regional Extension Working Group (REWG).

PROJECT HIGHLIGHTS SO FAR:

- ✓ Access to legume (bean) planters across several districts to establish wet season ground cover, improve soil health and reduce the amount of fertiliser required for the next crop
- ✓ Three projects investigating soil ameliorants to improve crop production and NUE
- ✓ Two local-scale water quality monitoring projects to demonstrate to farmers that “it is their N!”
- ✓ Several grower groups projects which involve sharing knowledge (peer to peer) and developing leadership skills amongst the growers in order to take their industry forward



Richard Hobbs from Herbert Cane Productivity Services Ltd with a moulder planter purchased for growers to trial.

TRAINING AND CAPACITY BUILDING:

A subsidised training and development program, based on identified regional needs, is supporting local extension providers to improve their skills and knowledge. Training for extension staff has included topics on: facilitation and communication skills, soil health and behavioural science.



Wet Tropics
Sugar Industry
Partnership

To find out more about the Regional Extension Plan, Wet Tropics Extension Networks or the Enhanced Extension Coordination projects, please contact the Wet Tropics Sugar Industry Partnership (WTSIP), based in the Terrain NRM Office on (07) 4043 8000 or Steve Roeger on 0427 790 389.

This program is funded by the Queensland Government Reef Water Quality Program and delivered by the Department of Agriculture and Fisheries with partner organisations: Cape York NRM, Terrain NRM, NQ Dry Tropics, Fitzroy Basin Association and Burnett Mary Regional Group.

