

APPENDIX D

Legend

Middleton Public Lands System

- Conservancy Lands
- Park Space
- Other Open Space
- Proposed Open Space

Other Public Lands

- School Districts
- City of Madison
- Town of Middleton
- Dane County
- WDNR

City of Middleton Trails

- Hard Surface (Conc./Asphalt/Porous)
- Crushed Limestone Surface
- Natural Surface
- Boardwalk
- Olympic CC Ski Training Facility
- Shared Use Route

Items of Interest

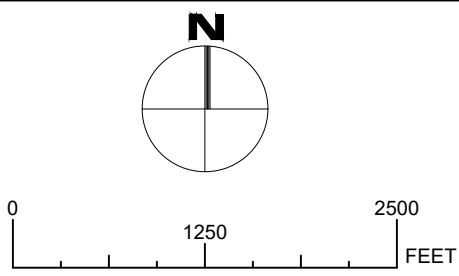
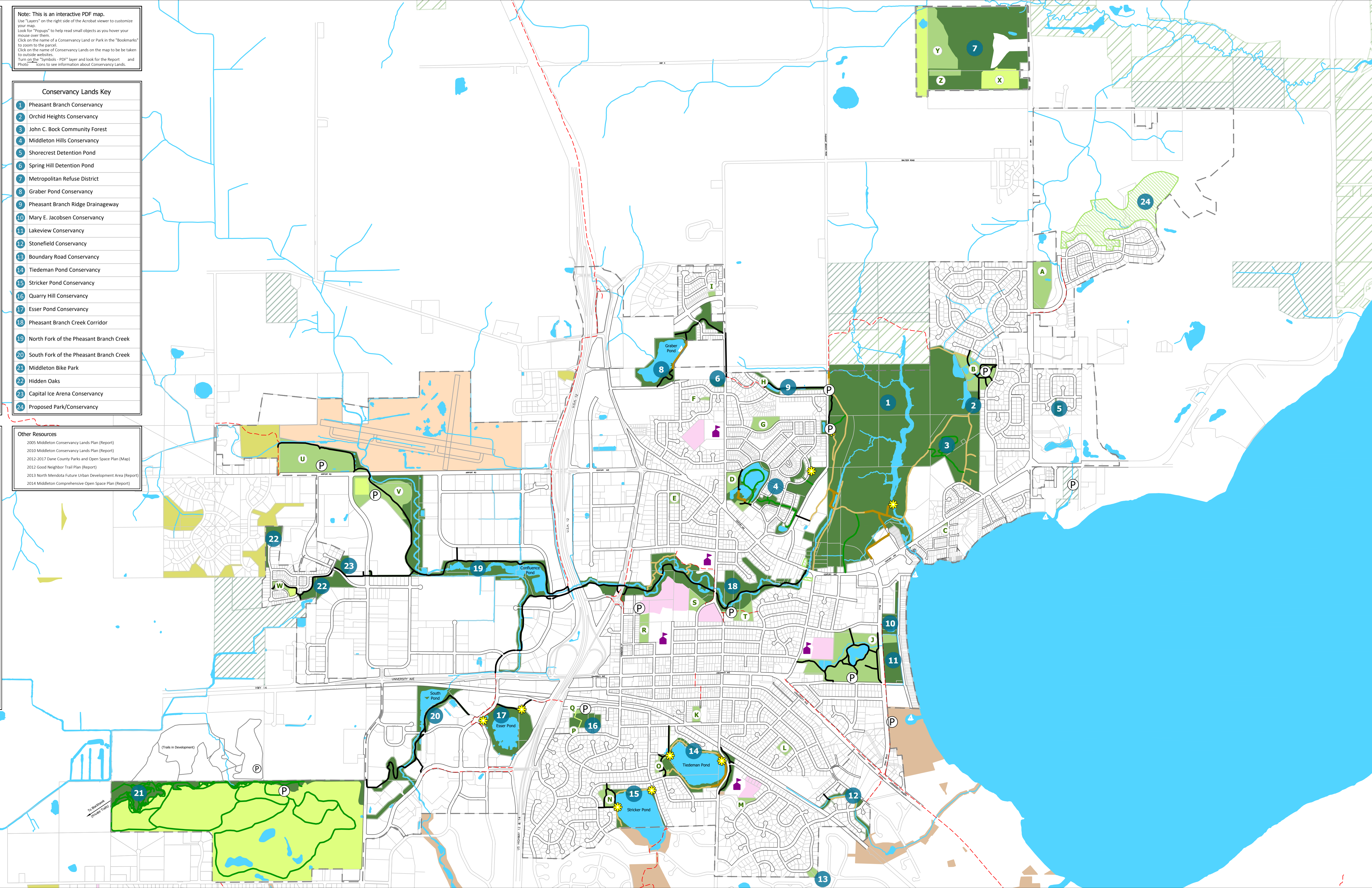
- City Limits
- Watersheds
- Vista
- School
- Parking Lot
- Boat Launch
- Bench

Note: This is an interactive PDF map. Use "Layers" on the right side of the Acrobat viewer to customize your map. Look for "Popups" to help read small objects as you hover your mouse over them. Click on the name of a Conservancy Land or Park in the "Bookmark" to zoom to the parcel. Click on the name of a Conservancy Land on the map to be taken to outside websites. Turn on the "Symbols - PDF" layer and look for the Report and Photo icons to see information about Conservancy Lands.

- Conservancy Lands Key**
- Pheasant Branch Conservancy
 - Orchid Heights Conservancy
 - John C. Bock Community Forest
 - Middleton Hills Conservancy
 - Shorecrest Detention Pond
 - Spring Hill Detention Pond
 - Metropolitan Refuse District
 - Graber Pond Conservancy
 - Pheasant Branch Ridge Drainageway
 - Mary E. Jacobsen Conservancy
 - Lakeview Conservancy
 - Stonefield Conservancy
 - Boundary Road Conservancy
 - Tiedeman Pond Conservancy
 - Stricker Pond Conservancy
 - Quarry Hill Conservancy
 - Esser Pond Conservancy
 - Pheasant Branch Creek Corridor
 - North Fork of the Pheasant Branch Creek
 - South Fork of the Pheasant Branch Creek
 - Middleton Bike Park
 - Hidden Oaks
 - Capital Ice Arena Conservancy
 - Proposed Park/Conservancy

- Park Space Key**
- A Taylor Park
 - B Orchard Heights Park
 - C Baskerville Park
 - D Middleton Hills Park - South
 - E Parkside Heights
 - F Hawkrigde Park
 - G Middleton Hills Park - North
 - H Pheasant Branch Ridge Park
 - I Middleton Ridge Park
 - J Lakeview Park
 - K District Center
 - L Meadows Park
 - M Stonefield Park
 - N Stricker Park
 - O Woodside Heights Park
 - P Hillcrest Park
 - Q Quarry Park
 - R Fireman's Park
 - S Baumann Aquatic Center
 - U Penni Klein Park
 - T Parisi Park
 - V Firefighters Memorial Park
 - W Hinrichs Family Farm Park
 - X MRD - Rush Fields
 - Y City of Middleton Dog Exercise Area
 - Z Small Dog Exercise Area

- Other Resources**
- 2005 Middleton Conservancy Lands Plan (Report)
 - 2010 Middleton Conservancy Lands Plan (Report)
 - 2012-2017 Dane County Parks and Open Space Plan (Map)
 - 2012 Good Neighbor Trail Plan (Report)
 - 2013 North Menomota Future Urban Development Area (Report)
 - 2014 Middleton Comprehensive Open Space Plan (Report)



Existing Facilities - System Map

City of Middleton

Conservancy Lands Plan Update

Description: Existing Open Space and Trails

Figure Number: 171208-00-001

Date: May 7, 2018

Prepared By: **RESOLUTION STUDIO, LLC**

ADAPTIVE RESTORATION

Legend

Middleton Public Lands System

- Conservancy Lands
- Park Space
- Other Open Space
- Proposed Open Space

Other Public Lands

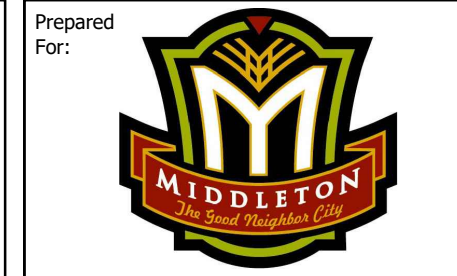
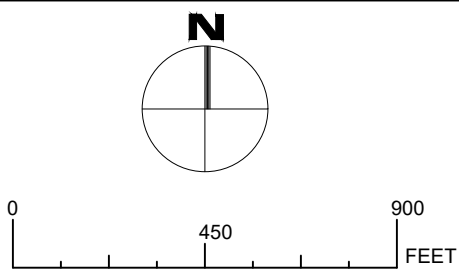
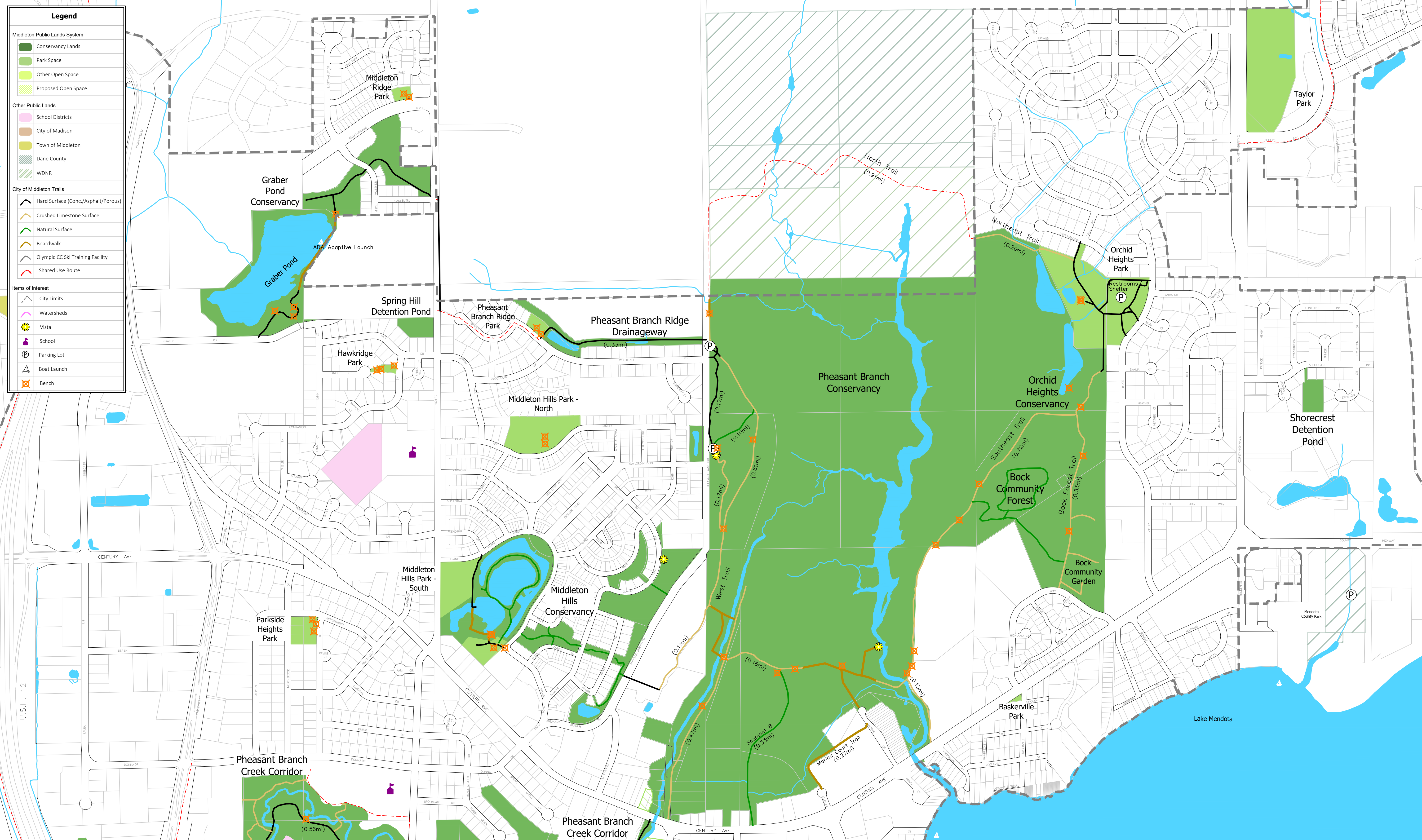
- School Districts
- City of Madison
- Town of Middleton
- Dane County
- WDNR

City of Middleton Trails

- Hard Surface (Conc./Asphalt/Porous)
- Crushed Limestone Surface
- Natural Surface
- Boardwalk
- Olympic CC Ski Training Facility
- Shared Use Route

Items of Interest

- City Limits
- Watersheds
- Vista
- School
- Parking Lot
- Boat Launch
- Bench



Pheasant Branch Area

City of Middleton

Conservancy Lands Plan Update	
Description: Existing Open Space and Trails - Pheasant Branch	
Figure Number: 171208-00-002	Date: May 7, 2018

Prepared By: **RESOLUTION STUDIO, LLC**

ADAPTIVE RESTORATION



Conservancy Lands - Southeast Area

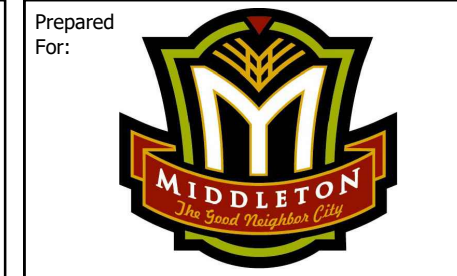
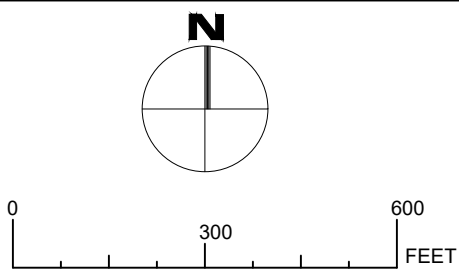
City of Middleton

Conservancy Lands Plan Update

Description:
Existing Open Space & Trails - Southeast Middleton

Figure Number:
171208-00-003

Date:
May 7, 2018



Legend

Middleton Public Lands System

- Conservancy Lands
- Park Space
- Other Open Space
- Proposed Open Space

Other Public Lands

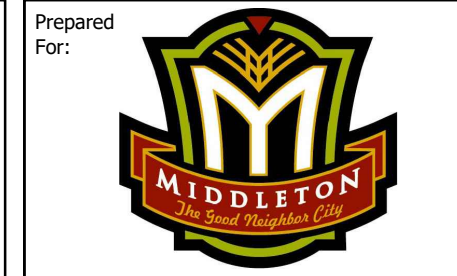
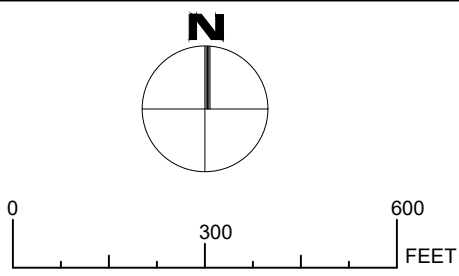
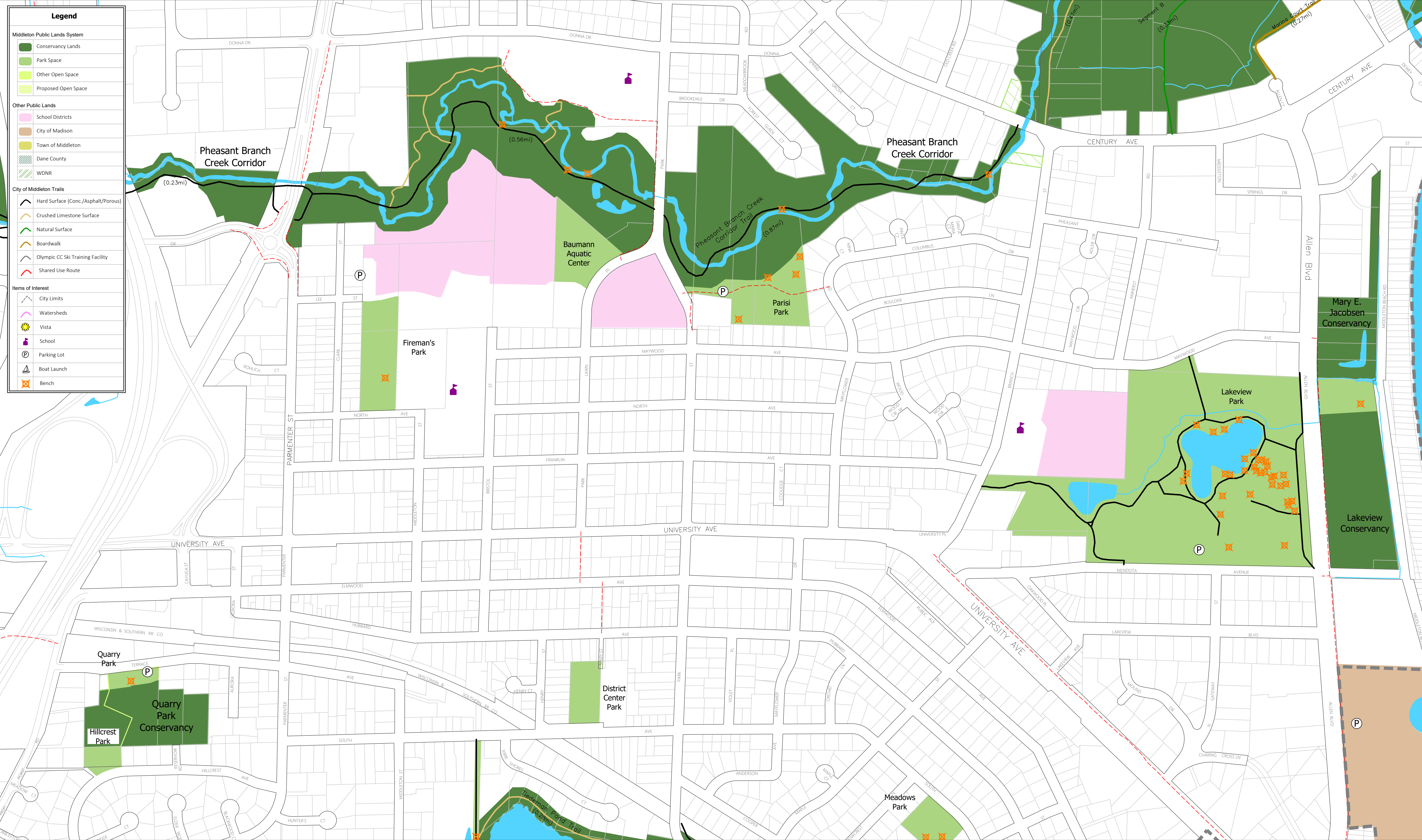
- School Districts
- City of Madison
- Town of Middleton
- Dane County
- WDNR

City of Middleton Trails

- Hard Surface (Conc./Asphalt/Porous)
- Crushed Limestone Surface
- Natural Surface
- Boardwalk
- Olympic CC Ski Training Facility
- Shared Use Route

Items of Interest

- City Limits
- Watersheds
- Vista
- School
- Parking Lot
- Boat Launch
- Bench



Conservancy Lands - Central Area

City of Middleton

Conservancy Lands Plan Update

Description:
Existing Open Space & Trails - Central Middleton

Figure Number:
171208-00-004

Date:
May 7, 2018

Prepared By: **RESOLUTION** STUDIO, LLC

ADAPTIVE RESTORATION

Legend

Middleton Public Lands System

- Conservancy Lands
- Park Space
- Other Open Space
- Proposed Open Space

Other Public Lands

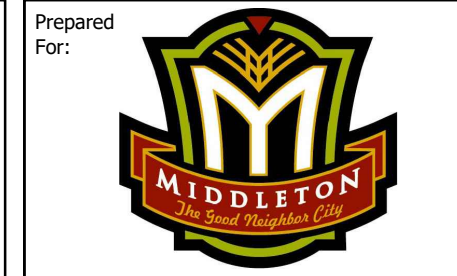
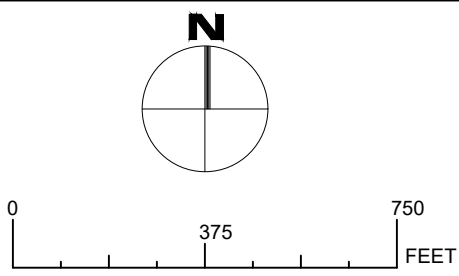
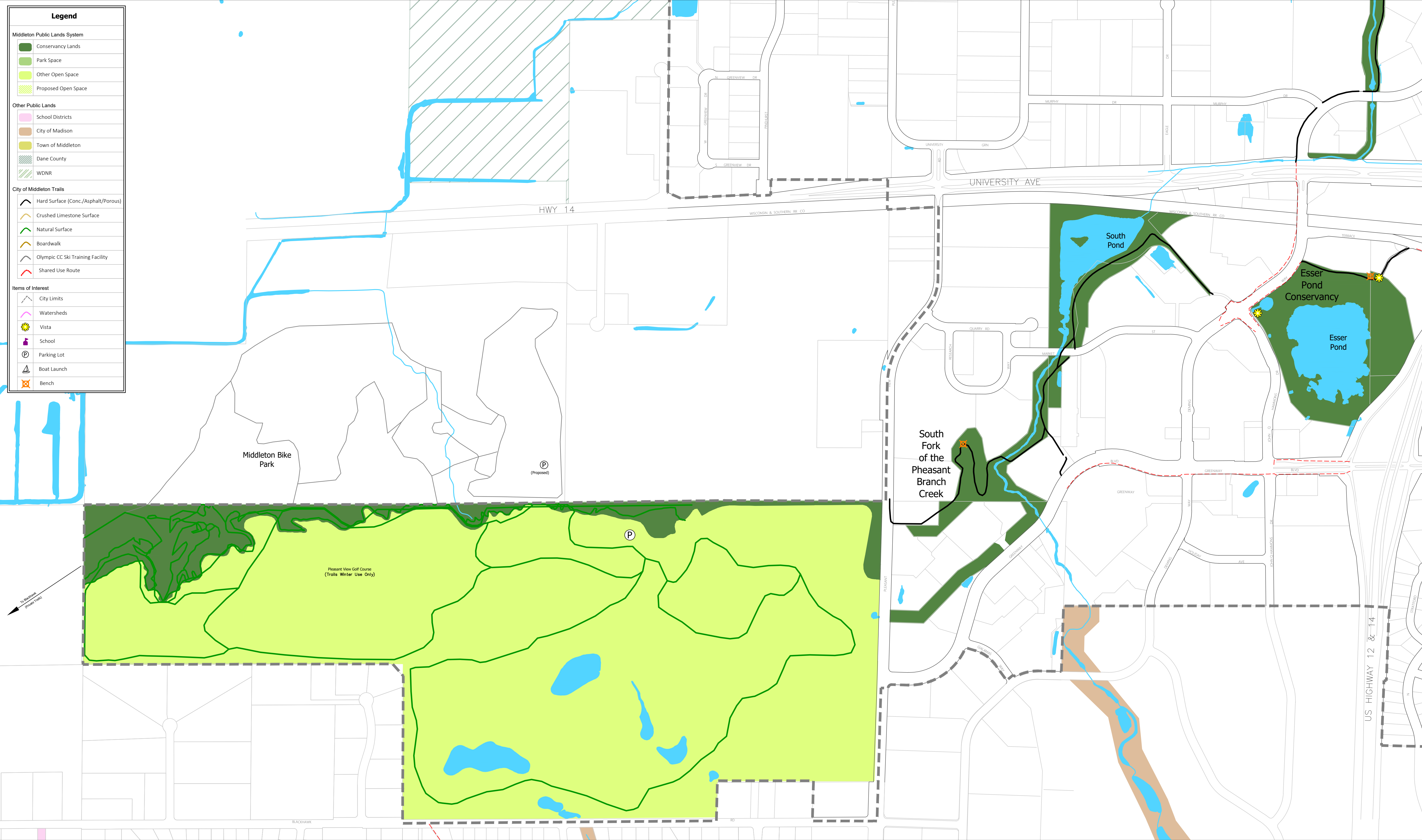
- School Districts
- City of Madison
- Town of Middleton
- Dane County
- WDNR

City of Middleton Trails

- Hard Surface (Conc./Asphalt/Porous)
- Crushed Limestone Surface
- Natural Surface
- Boardwalk
- Olympic CC Ski Training Facility
- Shared Use Route

Items of Interest

- City Limits
- Watersheds
- Vista
- School
- Parking Lot
- Boat Launch
- Bench



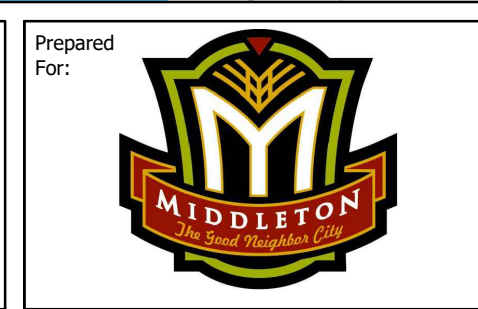
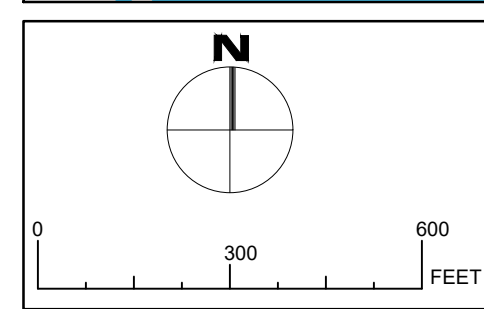
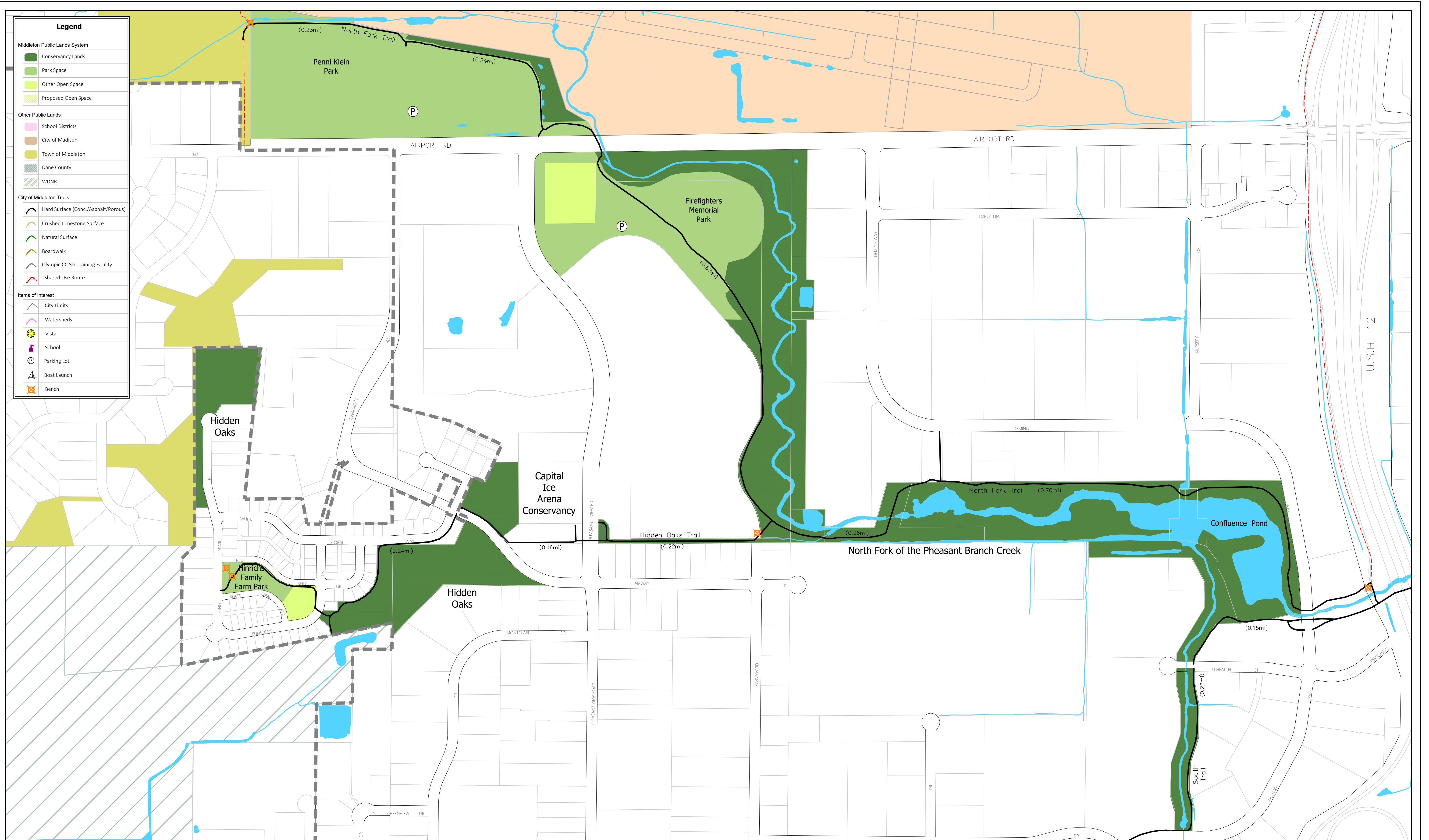
Conservancy Lands - Southwest Area

City of Middleton

Conservancy Lands Plan Update	
Description: Existing Open Space & Trails - Southwest Middleton	
Figure Number: 171208-00-005	Date: May 7, 2018

Prepared By: **RESOLUTION STUDIO, LLC**

ADAPTIVE RESTORATION



Conservancy Lands - Northwest Area

City of Middleton

Conservancy Lands Plan Update
 Description:
 Existing Open Space & Trails - Northwest Middleton
 Figure Number:
 171208-00-006
 Date:
 May 7, 2018



Legend

Middleton Public Lands System

- Conservancy Lands
- Park Space
- Other Open Space
- Proposed Open Space

Other Public Lands

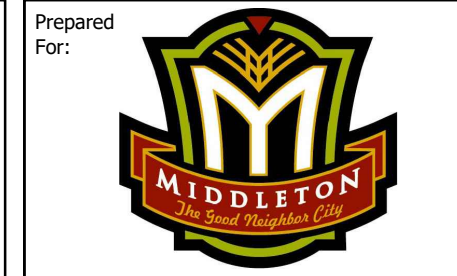
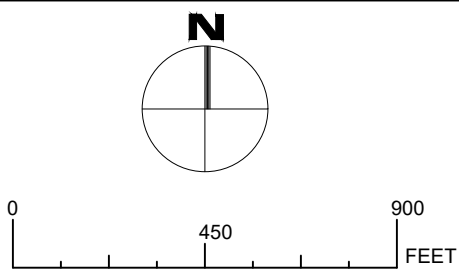
- School Districts
- City of Madison
- Town of Middleton
- Dane County
- WDNR

City of Middleton Trails

- Hard Surface (Conc./Asphalt/Porous)
- Crushed Limestone Surface
- Natural Surface
- Boardwalk
- Olympic CC Ski Training Facility
- Shared Use Route

Items of Interest

- City Limits
- Watersheds
- Vista
- School
- Parking Lot
- Boat Launch
- Bench



Conservancy Lands - Northeast Area

City of Middleton

Conservancy Lands Plan Update

Description:
Existing Open Space & Trails - Northeast Middleton

Figure Number:
171208-00-007

Date:
May 7, 2018

