



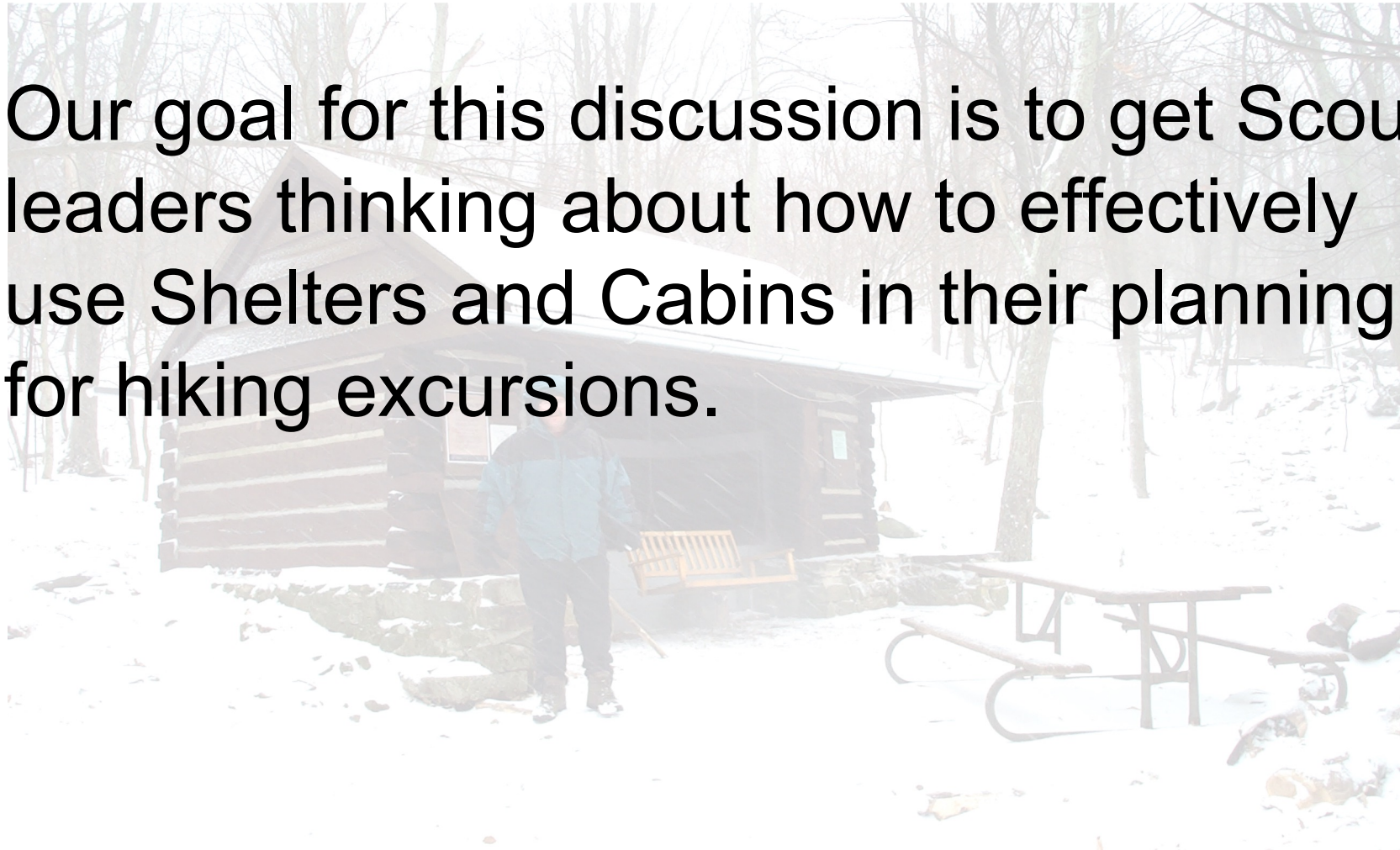
# Using Shelters or Cabins for Extended Trips

Rush Williamson  
22 February 2025



# Shelters and Cabins

Our goal for this discussion is to get Scout leaders thinking about how to effectively use Shelters and Cabins in their planning for hiking excursions.





# Shelters and Cabins

## What Is It We Want To Do?

- Backpacking trip on a trail – Multi-day
  - Maximum of Ten (10) in the group
  - **Do Not Use The Shelters** Group of 3-4 only  
Use the camp site at the shelter site
- Cabins
  - Hike or drive into it. Good for winter hikes for Venture/Venturing Scouts
  - Cub Scout over night
  - Car camp





# What Are My Resources?

[www.PATC.net](http://www.PATC.net)



- Internet ATC , PATC, Federal and or State WEB Sites

Alltrails, the "Farout" app, and Google Maps

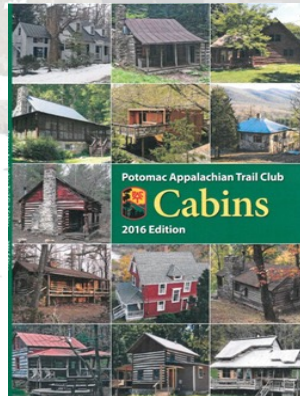
- Maps



- Guide Sets



- Cabin Book







# Shelters and Cabins



## First thing you do when planning a trip

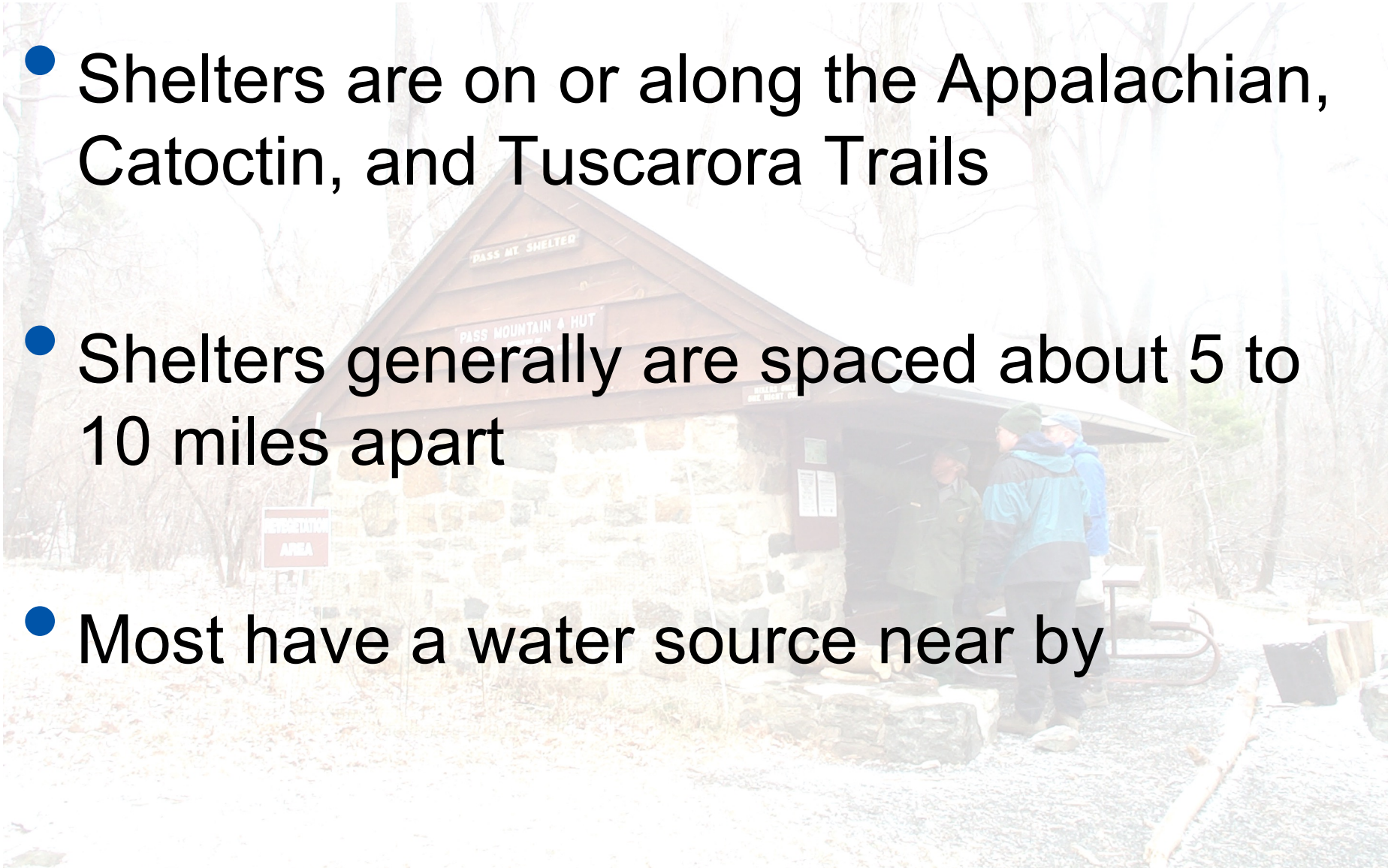
Follow the 1<sup>st</sup> LNT Principal: Plan Ahead and Prepare

- Check guidebooks and maps, cabins book, and Park and PATC WEB sites for guidance and note that camping regulations vary considerably along the trails.
- Prepare for extreme weather, hazards, and emergencies – especially the heat/cold – to avoid impacts from searches, rescues, and campfires.
- Learn when areas or times are most crowded and try to avoid those times.



# Shelters

- Shelters are on or along the Appalachian, Catoclin, and Tuscarora Trails
- Shelters generally are spaced about 5 to 10 miles apart
- Most have a water source near by







# Shelters

In the local region we have many hiking areas for Scout leaders to choose from. The Appalachian Trail is the most popular among these destinations, 27 shelters, and 6 camping areas along the section maintained by the PATC. The Tuscarora Trail currently has 8 shelters. The Catoctin Trail has 4 shelters (all together) and 3 camping areas.





# Shelters

- How can a group make use of the shelters - **You can't!**
- What rules apply to their use?
  - When camping keep crews to 10 individuals
  - Carry tents or tarps and leave shelters for solo hikers and groups of 4 or less
  - Remember: a group size limit of 10 means that your group never congregates in numbers greater than 10





# Guidelines for Groups on the AT

Appalachian Trail Conservancy

- [www.appalachiantrail.org/scouting/](http://www.appalachiantrail.org/scouting/)

Appalachian Trail Registration (**AT Camp**)

- <http://www.appalachiantrail.org/home/explore-the-trail/hiking-basics>

NO FIRE  
FIRE

Hikers ONLY  
1 NIGHT STAY







Gravel Springs Hut





Pass Mountain Hut





Rock Springs Hut





*Adirondack Shelter*



# Camping Sites and Shelters and on the Catoctin Trail

## ■ Cunningham Falls State Park

Manor Area Area May - Oct

William Houck Area May - Oct

[reservations.dnr.state.md.us/camping/cunningham-falls-state-park/.../campgroundDetails](https://reservations.dnr.state.md.us/camping/cunningham-falls-state-park/.../campgroundDetails)

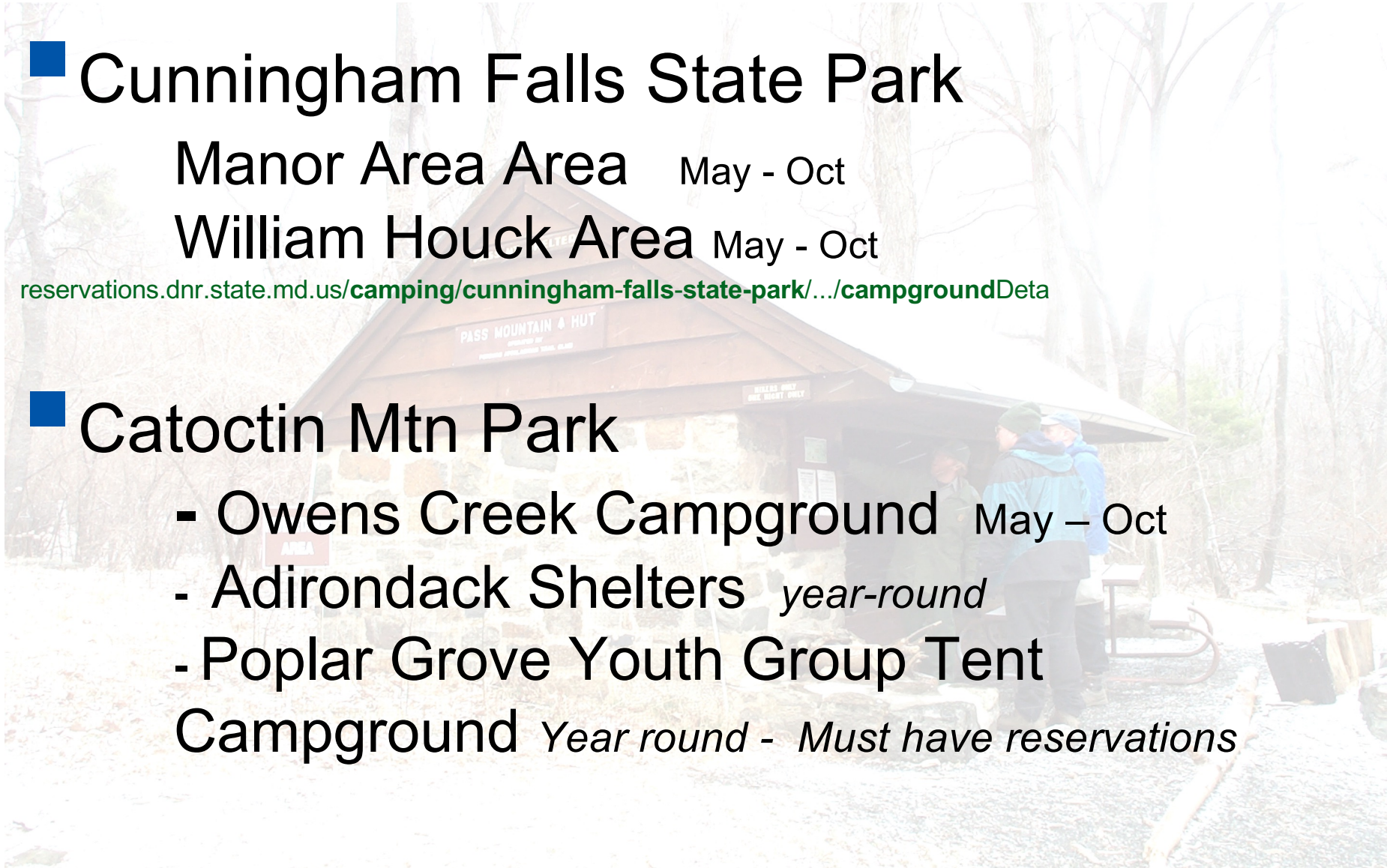
## ■ Catoctin Mtn Park

- Owens Creek Campground May – Oct

- Adirondack Shelters *year-round*

- Poplar Grove Youth Group Tent

Campground *Year round - Must have reservations*







# Cabins

The PATC also maintains 49 Cabins located through out the region. These cabins are usually located in secluded areas near hiking trails to include the AT, Catoctin, and the Tuscarora Trails. Both shelters and cabins could be used to provide overnight accommodations for a multiple day hike.





# Cabins

- What are primitive, semi-primitive and modern cabins?
- **Primitive cabins** are rustic and backcountry with an outhouse, no running water and no electricity. You will need to collect and purify your drinking water. Woodstoves, fireplaces and/or outdoor grills are available for cooking and heating.

**Semi-primitive cabins** are also rustic and backcountry, but most have electricity and some have running water - but no shower or indoor bathroom. Electricity is for lights and possibly for cooking & refrigeration. There may be running water for kitchen use.
- **Modern "cabins"** are typically houses located either in the woods or closer to towns. Modern cabins have indoor plumbing, electricity, heating, and possibly air conditioning



# Cabins

Who can use the Cabins?

Ways to book a cabin

- PATC WEB Site [PATC.NET](http://PATC.NET)
- Cabin Reservation Desk hours MWF 11:00-1:00PM. 703-242-0315 EX 1 MUST CALL for last minute or advanced rentals

Reservations can be made two (2) months in advance

Cabins in state & National Parks anyone can rent, the other 2/3s must be a PATC member



# HOW TO BOOK A CABIN ONLINE



Potomac Appalachian  
Trail Club



[My Portal](#)

[Volunteer Reporting](#)

[Our Work](#) ▾

[Get Involved](#) ▾

[Rent A Cabin](#) ▾

[News + Events](#) ▾

[Shop](#)

[Contact Us](#)

[Renew/Join](#)

[Volunteer](#)

[Donate](#)

## Steps to Booking a Cabin

Cabin Reservation Desk hours MWF 11:00-1:00PM. [703-242-0315 EX 1](tel:703-242-0315)

**MUST CALL for last minute or advanced rentals**

**Check availability first (step 3 below)**

Or

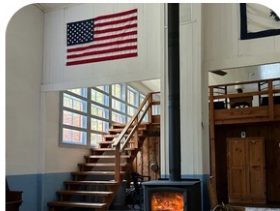
**24/7 Online booking for standard reservations**

The following **SNP CABINS ARE UNDER REPAIR** and not available to book until further notice:

**Pocosin**

**Corbin**

**Jones Mountain**





POTOMAC  
APPALACHIAN  
TRAIL CLUB  
www.patc.net

## CABINS MAP





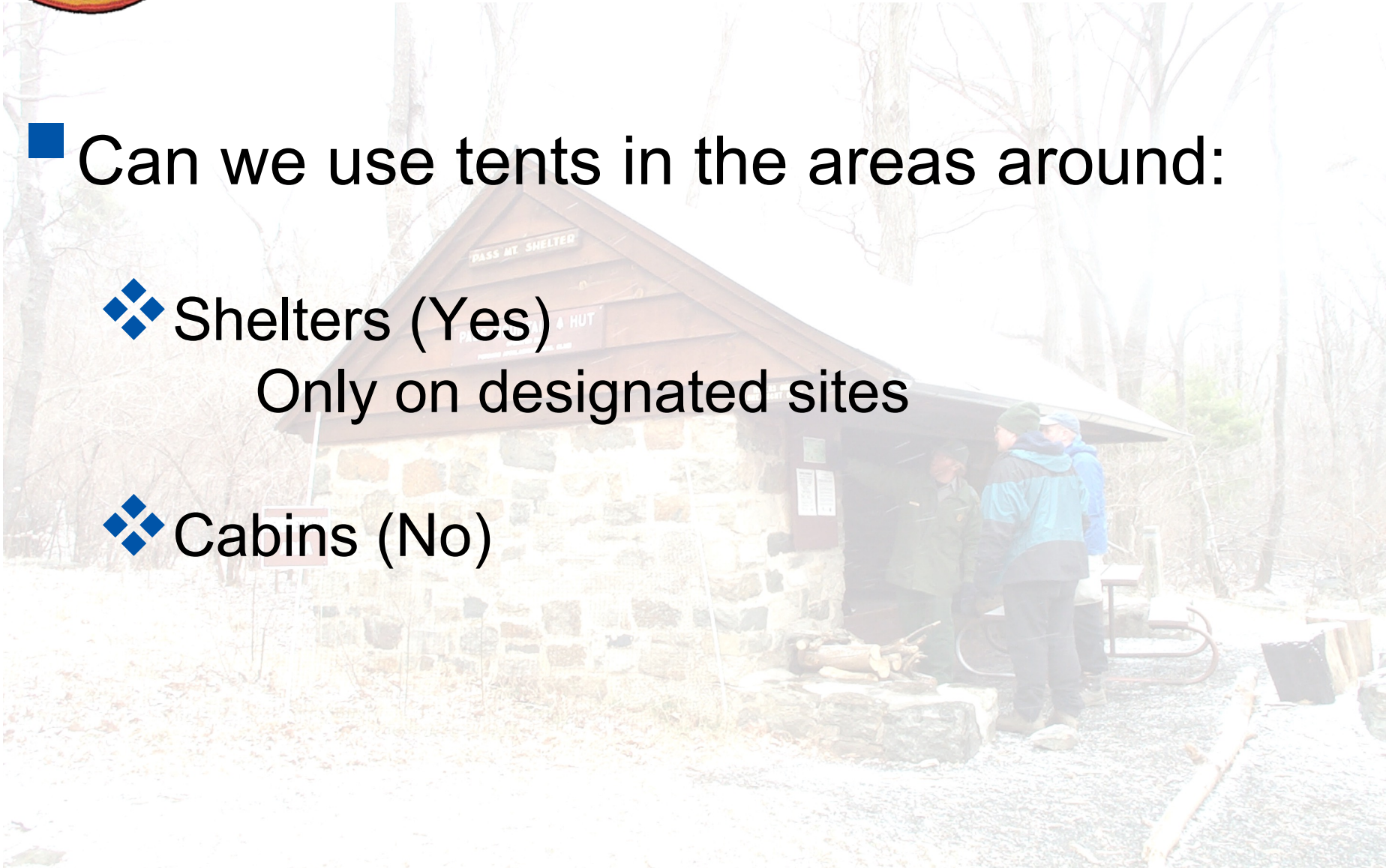


# Cabins

■ Can we use tents in the areas around:

❖ Shelters (Yes)  
Only on designated sites

❖ Cabins (No)







Bears Den





Blackburn Trail Center Cabin





Catoctin Hollow Lodge





Morris Cabin





John's Rest Cabin





Meadows Cabin





Lambert Cabin





Olive Green Cabin