

# National Memorial Park Flags

Guide to identifying veteran's graves

# Difference between Memorial Day and Veterans Day

- Memorial Day is for those that paid the ultimate sacrifice to protect our freedom
- Veterans Day is the celebration of all our veterans, living or dead.

# What Is The Objective?

- Honor those who served in the military
- Identify headstone emblems of veterans
- Learn how to place a flag

# Look for obvious signs

- War veteran
- Military rank



# Look for symbols

- US emblems/flags
  - Eagle wings are often on air force medals
  - Anchors are often on navy medals
- Eagles
- Military medals
- Rifles/cannons



# Look for service organizations

People in these organizations often were in the armed forces

- Elks club
- Moose international
- Lions international
- Masons/Freemasons
- Shriners





# Look for dates

- WWI 1914-1918
- WWII 1941-1945
- Korean 1950-1953
- Vietnam 1959-1973
- Iraq 2003-2011
  - Typical ages of those who served were 18-30

# Examples

Place flag

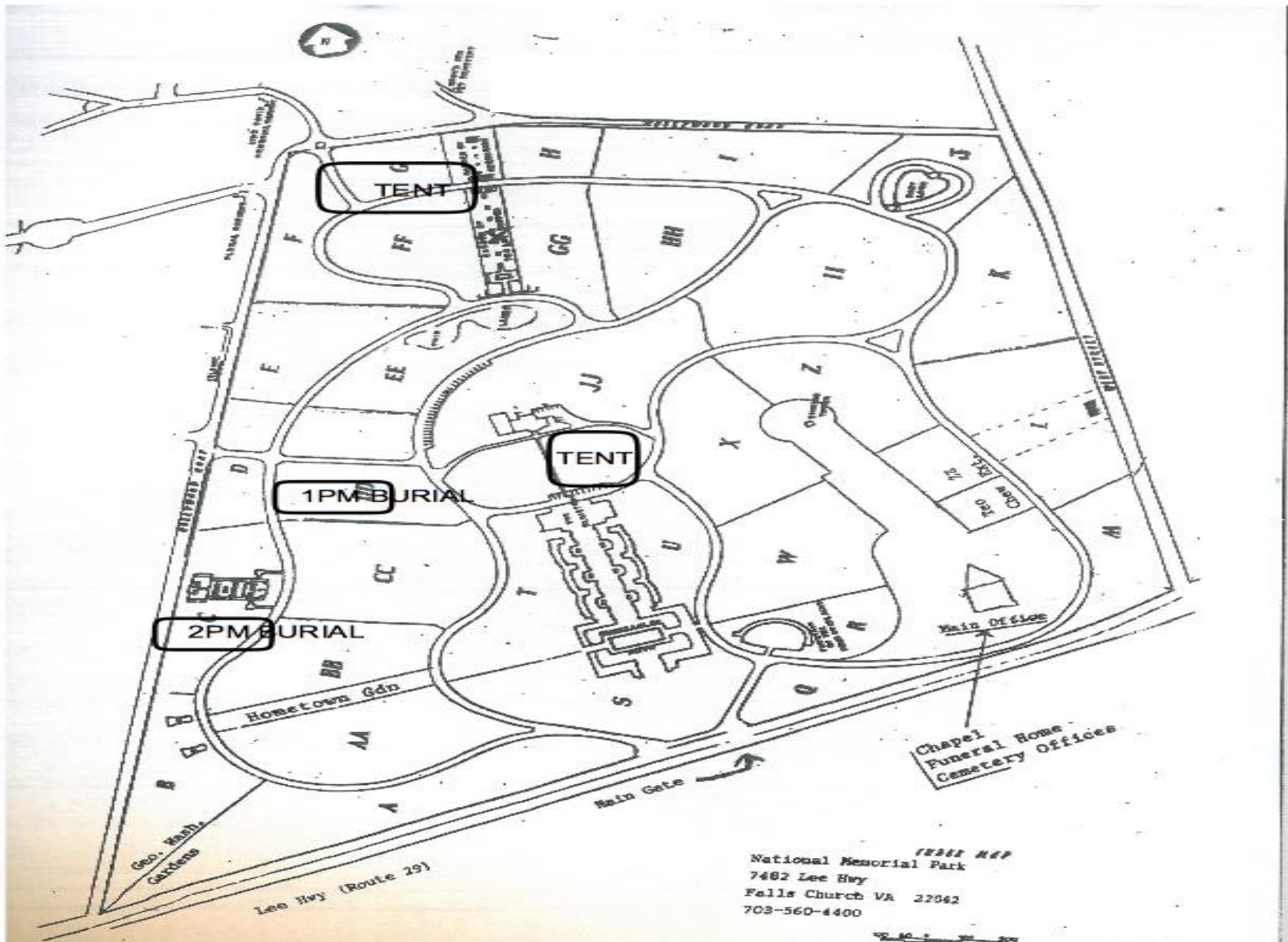


Don't place flag



# Other Items

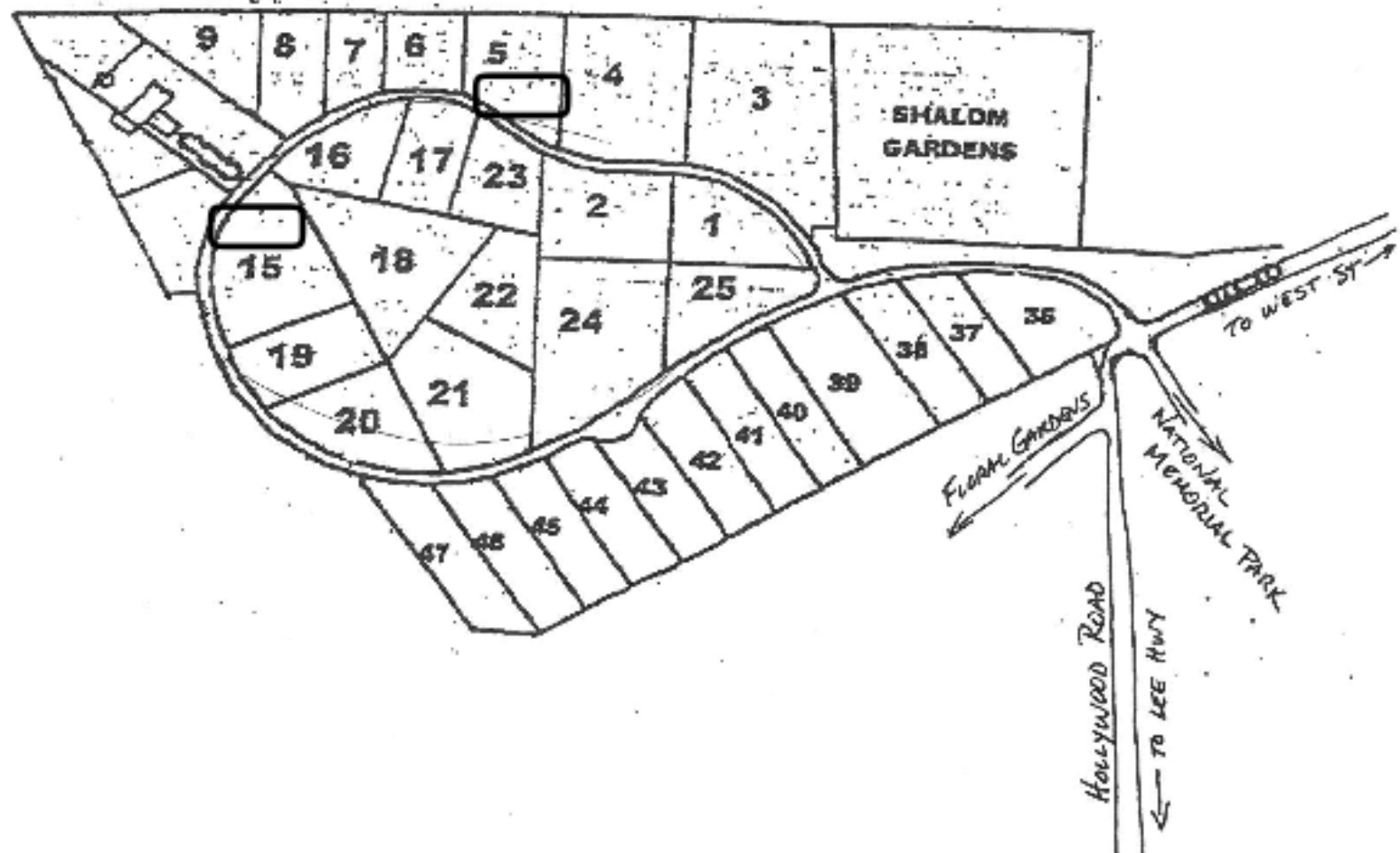
- Active Memorial Park
  - Please be respectful of others
  - Funerals and loved ones paying respect
- Taps
  - On the hour
  - Please pause, Scout Salute toward the bugler
  - Wait for Taps to complete before resuming
- Maps
  - Maps are on the tables
  - Assigned areas; but feel free to help in other areas



1968 MAP  
 National Memorial Park  
 7482 Lee Hwy  
 Falls Church VA 22042  
 703-560-4400



# KING DAVID MEMORIAL GARDENS



Thank you for your service  
to our nation's veterans!