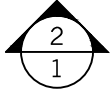
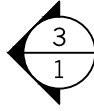
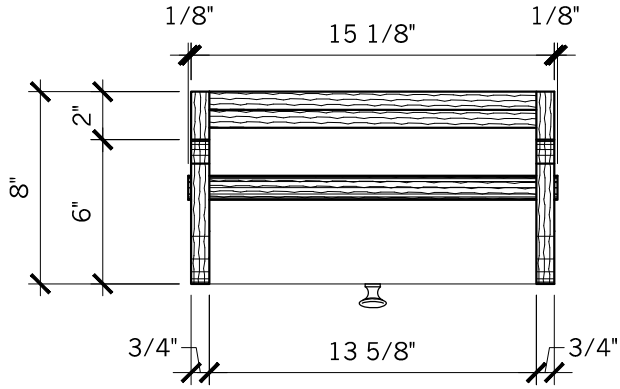
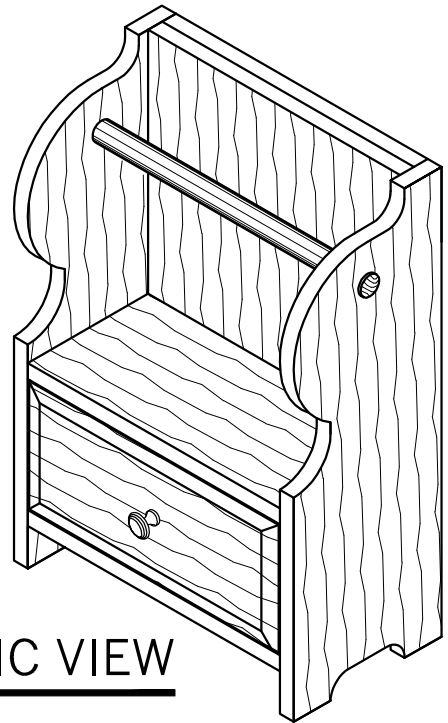


CONTESTANT #: _____

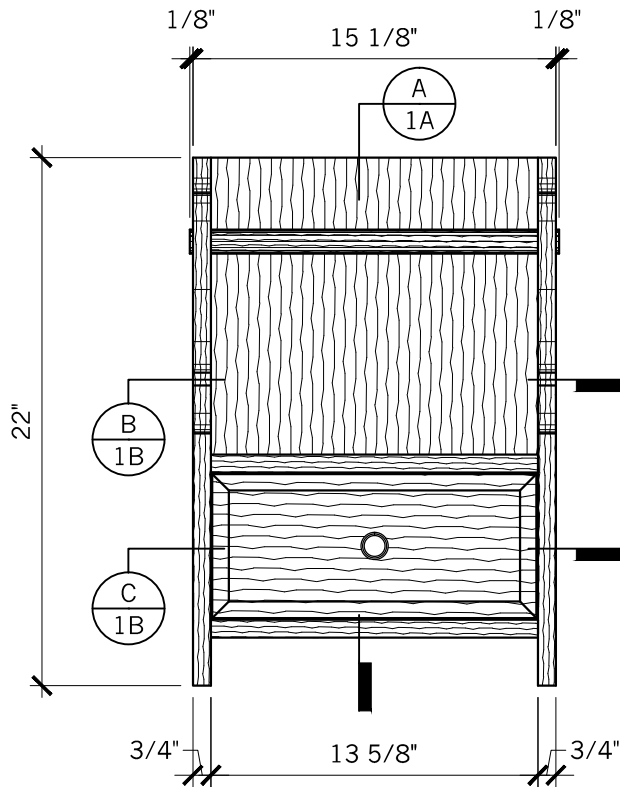


1 **PLAN VIEW**
SCALE: 1 1/2"=1'-0"

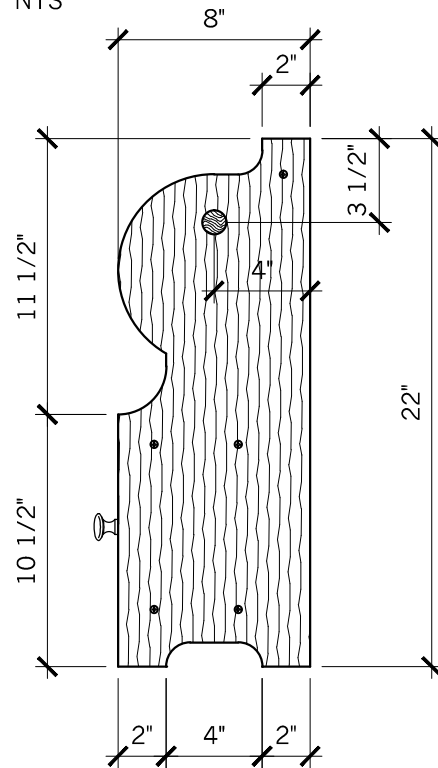


ISOMETRIC VIEW

SCALE: NTS



2 **ELEVATION**
SCALE: 1 1/2"=1'-0"

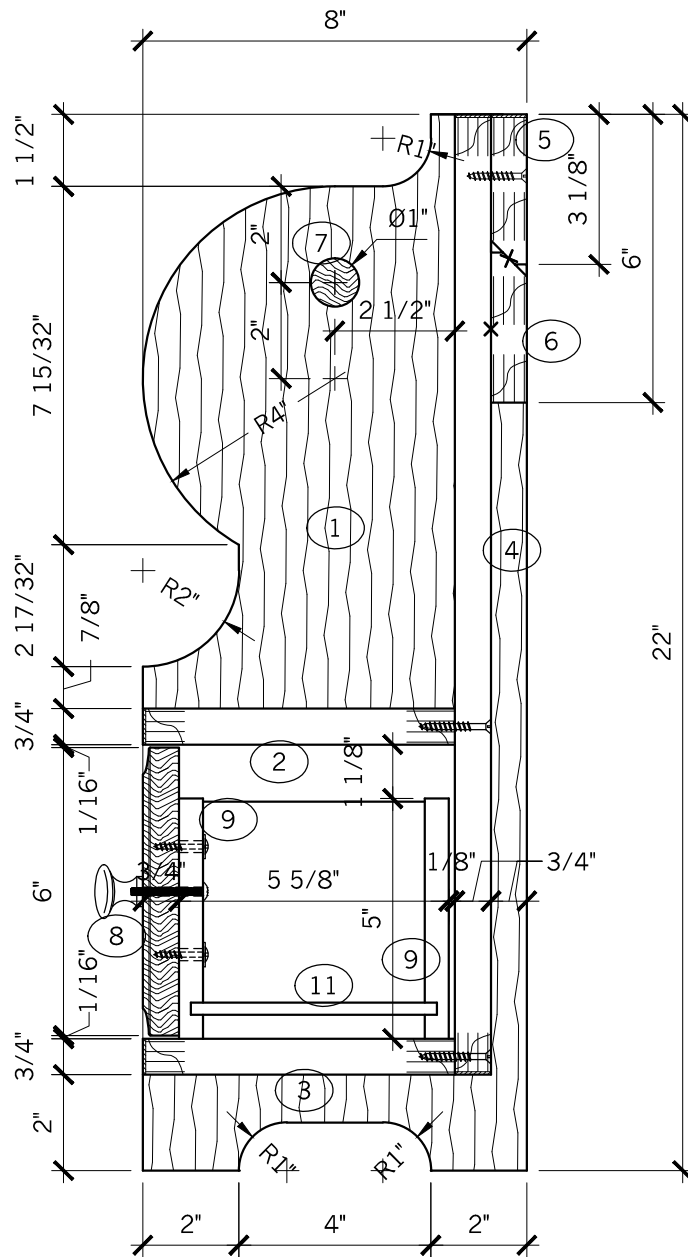


3 **ELEVATION**
SCALE: 1 1/2"=1'-0"

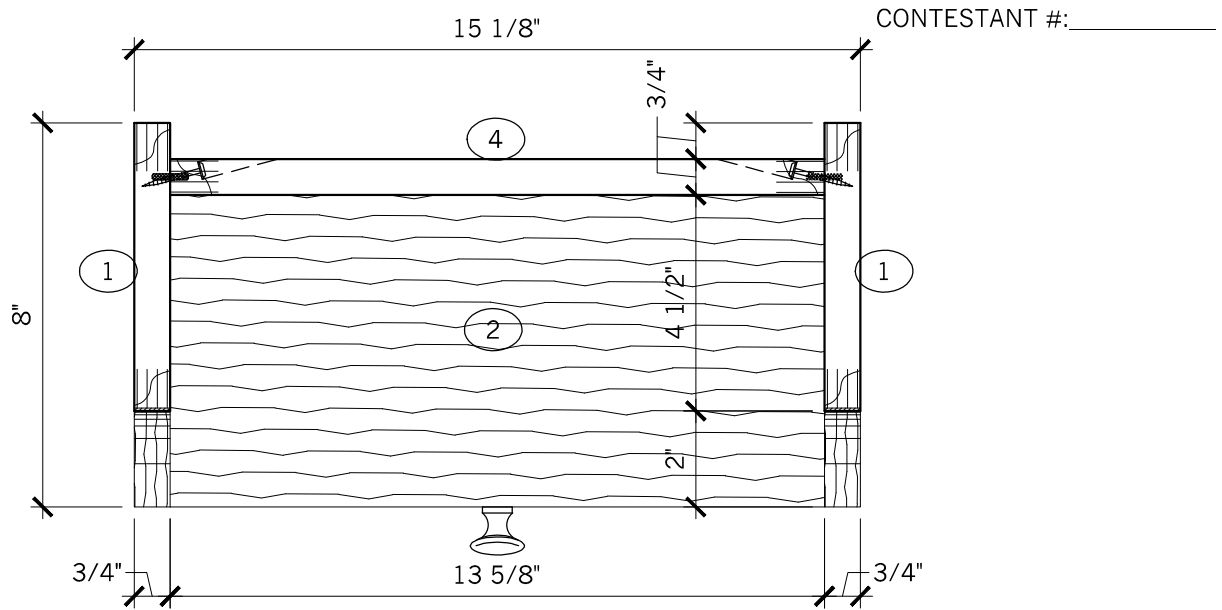
SkillsUSA
CALIFORNIA
STATE CONTEST

INTRO WOODWORKING
WALL CABINET
PLAN, ELEVATIONS & ISOMETRIC

DATE:	APRIL	2023
DRAWN BY:	SM/ES	SCALE: AS NOTED
DWG. NO.	1	

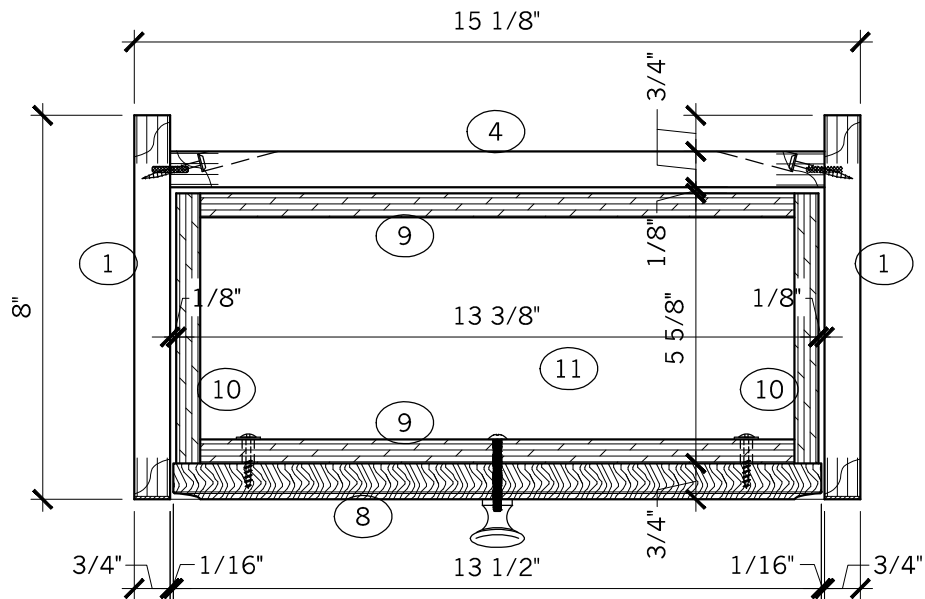


A VERT SECTION
SCALE: 3"=1'-0"



B PLAN SECTION

SCALE: 3"=1'-0"



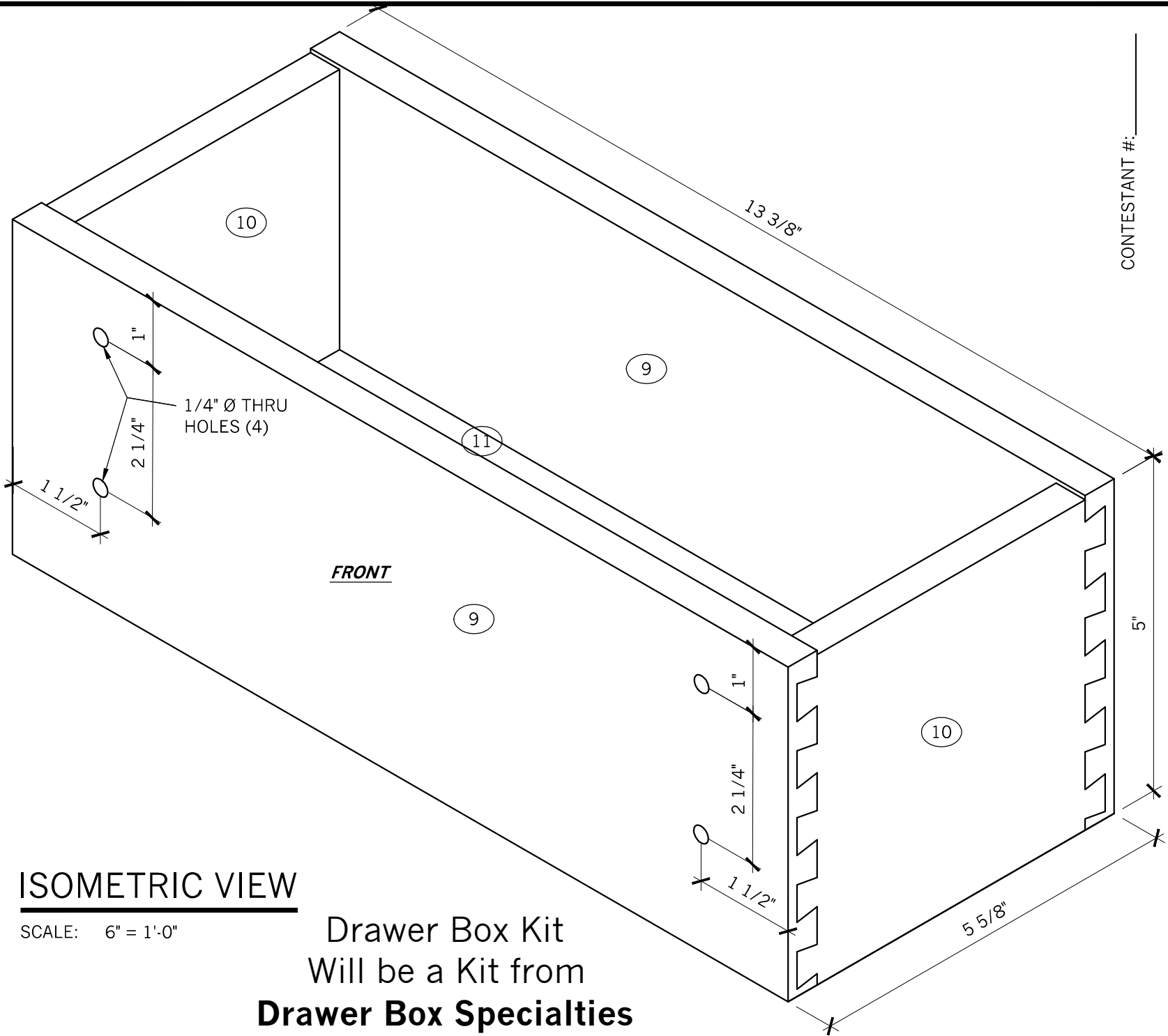
C PLAN SECTION

SCALE: 3"=1'-0"

SkillsUSA
CALIFORNIA
STATE CONTEST

INTRO WOODWORKING
WALL CABINET
SECTIONS

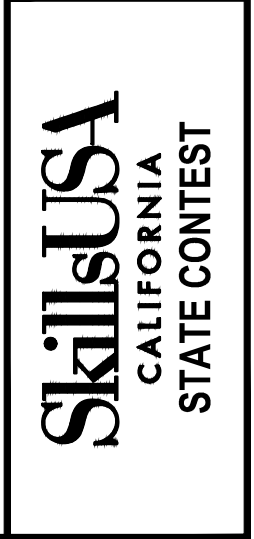
DATE: APRIL	2023
DRAWN BY: SM/ES	SCALE: 3"=1'-0"
DWG. NO. 1B	



CONTESTANT #: _____

DATE:	APRIL	2023
DRAWN BY:	SM/ES	SCALE: 3"=1'-0"
DWG. NO.	1C	

INTRO WOODWORKING
WALL CABINET
SECTIONS



CONTESTANT #: _____

BILL OF MATERIALS

#	QTY	DESCRIPTION	MATERIAL	THK	WIDTH	LENGTH	NOTES
1		Ends	Red Oak Ply	$\frac{3}{4}$ "	8"		Edge 1 Long & 1 Short
2	1	Fixed Shelf	Red Oak Ply	$\frac{3}{4}$ "		$13\frac{5}{8}$ "	Edge 1 Long
3	1	Bottom	Red Oak Ply	$\frac{3}{4}$ "	$6\frac{1}{2}$ "		Edge 1 Long
4		Back	Red Oak Ply	$\frac{3}{4}$ "	$13\frac{5}{8}$ "		Edge 2 Short
5	1	Build Up	Red Oak Ply	$\frac{3}{4}$ "		$13\frac{5}{8}$ "	Edge 1 Long
6	1	Cleat	Red Oak Ply	$\frac{3}{4}$ "	$3\frac{1}{8}$ "	$13\frac{1}{2}$ "	
7		Dowel Rod	Solid Oak	1"	1"		Round ends over
8	1	Drawer Front	Solid Oak	$\frac{3}{4}$ "		$13\frac{1}{2}$ "	From Decore-Ative Specialties
9	2	Drawer Box Front & Back	Baltic Birch Ply	$\frac{1}{2}$ "	5"	$13\frac{3}{8}$ "	Kit from Drawer Box Specialties
10	2	Drawer Box Sides	Baltic Birch Ply	$\frac{1}{2}$ "	$4\frac{15}{16}$ "	$5\frac{5}{16}$ "	Kit from Drawer Box Specialties
11	1	Drawer Box Bottom	Baltic Birch Ply	$\frac{1}{4}$ "	$5\frac{1}{8}$ "	$12\frac{7}{8}$ "	Kit from Drawer Box Specialties
12							

NOTES:

FILL IN OPEN CELLS (10 POINTS EACH)

This portion of the competition is worth 100 of 1000 points.

SkillsUSA
CALIFORNIA
STATE CONTEST

INTRO WOODWORKING
BILL OF MATERIALS
PANEL LAYOUT

DATE:	APRIL	2023
DRAWN BY:	SM/ES	SCALE: 1-1/2"=1'-0"
DWG. NO.	BOM	

CONTESTANT #: _____

BILL OF MATERIALS


#	QTY	DESCRIPTION	MATERIAL	THK	WIDTH	LENGTH	NOTES
1		Ends	Red Oak Ply	$\frac{3}{4}$ "	8"		Edge 1 Long & 1 Short
2	1	Fixed Shelf	Red Oak Ply	$\frac{3}{4}$ "		$13\frac{5}{8}$ "	Edge 1 Long
3	1	Bottom	Red Oak Ply	$\frac{3}{4}$ "	$6\frac{1}{2}$ "		Edge 1 Long
4		Back	Red Oak Ply	$\frac{3}{4}$ "	$13\frac{5}{8}$ "		Edge 2 Short
5	1	Build Up	Red Oak Ply	$\frac{3}{4}$ "		$13\frac{5}{8}$ "	Edge 1 Long
6	1	Cleat	Red Oak Ply	$\frac{3}{4}$ "	$3\frac{1}{8}$ "	$13\frac{1}{2}$ "	
7		Dowel Rod	Solid Oak	1"	1"		Round ends over
8	1	Drawer Front	Solid Oak	$\frac{3}{4}$ "		$13\frac{1}{2}$ "	From Decore-Active Specialties
9	2	Drawer Box Front & Back	Baltic Birch Ply	$\frac{1}{2}$ "	5"	$13\frac{3}{8}$ "	Kit from Drawer Box Specialties
10	2	Drawer Box Sides	Baltic Birch Ply	$\frac{1}{2}$ "	$4\frac{15}{16}$ "	$5\frac{5}{16}$ "	Kit from Drawer Box Specialties
11	1	Drawer Box Bottom	Baltic Birch Ply	$\frac{1}{4}$ "	$5\frac{1}{8}$ "	$12\frac{7}{8}$ "	Kit from Drawer Box Specialties
12							

NOTES:

RETURN THIS SHEET COMPLETED
TO A SkillsUSA COORDINATOR

FILL IN OPEN CELLS (10 POINTS EACH)

This portion of the competition is worth 100 of 1000 points.

	INTRO WOODWORKING	DATE:	APRIL	2023	
	BILL OF MATERIALS	DRAWN BY:	SM/ES	SCALE:	1-1/2"=1'-0"
	PANEL LAYOUT	DWG. NO.	BOM		