

# STAR WARS

Patuxent District  
Cub and Pal Day Camp

May 7-8, 2022

Cheltenham American Legion Camp

Cost \$25 per person



**May the Force be With You!**

**Train you must Young Paduwans.  
Teach you much our Jedi Masters will .  
Use your skills to save the Galaxy you will.**

**Families Welcome!**



**Cost includes all program supplies for all participants!**

**Participants will be responsible for their own sack lunch on Saturday and Cracker Barrel on Saturday Evening.**

**Program open to ALL Cub Scouts, Webelos Scouts, Tiger Cubs and Lion Cubs and their Families!**

**Meal Information: (Tentative)**

Saturday Lunch - Bring a sack lunch and drink from home

Saturday Dinner— Han Burgers  
Chips  
Wookie Cookies

.

Cracker Barrel—Fried Pies

Sunday Breakfast C-3PO Pancakes and Syrup  
Fruit  
Juice  
Coffee/Tea for Adults

**NOTE:** If you have medical or other special food requirements please notify the camp staff in advance!

**Cub and Pal Day Camp Contacts**

Jo Posluszny 570—575-7631  
PatuxentActivities@yahoo.com  
Camp Chairman

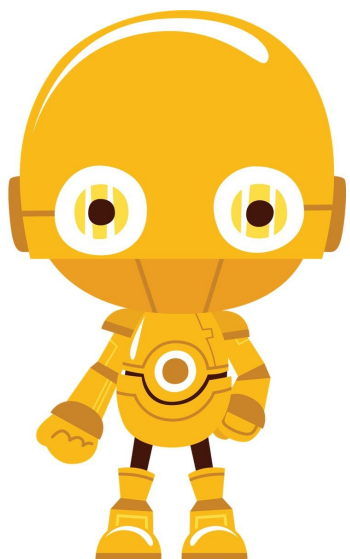
Lenny Wertz 301-221-0290  
buffalo8265@msn.com  
Vice Chairman of Program

## **Saturday Schedule**

8:00-9:15 AM	Registration Set up Camp
Sites	
9:20 - 9:45 AM	Opening Ceremony
10:00 -10:45 AM	1st Session
11:00 -11:45 AM	2nd Session
11:45 -12:45 PM	Lunch
1:00 -1:45 PM	3rd Session
2:00 - 2:45 PM	4th Session
3:00 - 3:45 PM	5th Session
4:00 - 4:45 PM	6th Session
	Adult Cooking Station
5:00 - 8:00 PM	Supper and Free Time
8:00 - 9:00 PM	Camp Fire
9:00 - 10:00 PM	Cracker Barrel (Snack Time) in site
11:00 PM	TAPS (Lights Out!)



## **Sunday Schedule**



8:15 - 8:30 AM	Scouts Own
8:30 AM	Closing
8:35-9:30AM	Breakfast
9:30 AM	Depart Camp

Schedule may be revised

## **2022 Cub and Pal Day Camp Registration**

**PLEASE COMPLETE REGISTRATION ON LINE THROUGH THE CALENDAR AT THE PATUXENT DISTRICT PAGE OF NCAC BSA WEB SITE. <https://www.ncacbsa.org/Patuxent/>**

**If you cannot complete registration online please notify the camporee staff of your intention to attend  
Cub and Pal!**

Jo Posluszny patuxentactivities@yahoo.com  
Lenny Wertz buffalo8265@msn.com

### **Camp Fees are**

\$20.00 per person by April 23, 2022

\$25 per person after April 23, 2022

**\*\*\*\*\*We must have at least 60 participants registered by April 23 in order to hold this event. Please register early!**

**Please Bring a COMPLETED MEDICAL FORM FOR EACH CAMPER TO CAMP AT CHECK IN.**

**If you have special medical or nutritional concerns please notify the Cub and Pal Staff. We are happy to work with you to make an accommodation.**

## PARENT & PAL NOTES

- Cub & Pal is a 24-hour program (Saturday morning to Sunday morning). It is the perfect introductory camping program for "new" or experienced campers. All you have to do is show up and set up your simple camping area.
- Cub & Pal is a "complete package." In order to reap all the benefits that our program provides, ***it is strongly recommended that you do not leave until after the closing ceremony on Sunday morning.*** Activities are presented in a round-robin format, so that everyone gets to experience everything that is offered. Participants walk from one activity to the next during the course of the day.
- Cub Scouts can attend Cub & Pal as a pack, den or individual family, but it is best experienced one-on-one with your own scout. Moms or dads **or both** can attend. (Legal guardians and other family relatives – grandparents, etc. – are also welcome to attend.) (**Note: If there are two or more Scouts in your family, it is okay to attend with one parent. And, again, both parents may attend with their Scouts.**)
- **Siblings and/or other family members may also attend. Please plan on bringing any necessities you feel you may need for your younger children – high chair, etc. (Note: strollers are difficult to maneuver in camp!)**
- **Note:** If you must bring another Scout with you whose parent cannot attend, you may do so. However, please be aware that per BSA Guidelines you **CAN-NOT** sleep in the same tent with a child other than you own. You will have to use two tents – one for yourself and one for the Scouts.
- This program is open to all registered Lion Cubs, Tiger Cubs, Cub Scouts and Webelos Scouts; **however**, it is recommended that after attending Cub & Pal as a Tiger, Wolf and Bear, that your Webelos Scouts are afforded the opportunity to attend a Cub Scout Resident Camp at either Camp Snyder or Goshen Scout Reservation to better prepare them for the Scouts BSA program. Scouting is an age-appropriate program within which guidelines have been developed based on the mental, physical, emotional and social maturity of youth members. Cub & Pal is meant to be a "basic" camping program. Our Council's overnight Resident Camp programs offer more challenging and varied opportunities for your older Scouts than are provided at Cub & Pal Day Camp



## PERSONAL AND UNIT EQUIPMENT NEEDED FOR CUB & PAL

- ◇ Tent
- ◇ Drop cloth (tarp) for under your tent (to keep the inside, and you, dry)
- ◇ Sleeping bag, extra blankets (it can get downright cold at night) and pillow
- ◇ an air mattress, cot or foam pad is recommended – the ground is hard
- ◇ Lawn chair or camp chair – strongly recommended
- ◇ Rug runner for right inside your personal tent (helps keep dirt out of your tent)
- ◇ A light (lantern) for your tent (or use your flashlight). (A light is better.)
- ◇ A small whisk broom to brush away any lingering cobwebs (optional).
- ◇ Flashlight - essential
- ◇ Uniforms are requested for the opening ceremony and Scouts Own for all Scouts
- ◇ Scouting t-shirts are encouraged (pack, camp, etc.).
- ◇ Extra pants
- ◇ Pajamas
- ◇ Extra socks, especially if rain is indicated
- ◇ Sturdy shoes – **you will be doing a lot of walking!**
- ◇ Jacket or sweat shirt – the air is cool to cold at night
- ◇ Rain gear, if indicated by the weather
- ◇ Hygiene necessities – towel, washcloth, soap, shampoo, shower shoes, any needed toiletries.
- ◇ Bug repellent (*spray not recommended – aerosol sprays take the waterproof finish off tents*)
- ◇ Sack Lunch and Drink for Saturday. Non Carbonated Beverages please!.
- ◇ All participants are requested to bring a canteen or water bottle (Please carry it with you.)

### Unit Level Equipment

- ◇ Trash Bags
- ◇ Folding Table
- ◇ Dining Fly
- ◇ Water Container
- ◇ 12 Inch Dutch Oven

**GROUND FIRES ARE NOT PERMITTED** – Fires contained completely above the ground will be permitted. **FIRES MUST BE ATTENDED AT ALL TIMES!** Charcoal grills and/or propane stoves, with proper supervision, are recommended for cooking. Firewood is not available at the Camporee site.

**FIREWORKS** NO fireworks are ever allowed at BSA activities.

**ALCOHOLIC BEVERAGES**—No alcoholic beverages are allowed at BSA youth activities. please adhere to this policy – *violators will be requested to leave camp immediately!*

**SMOKING** Smoke in the designated smoking area only. Smoking should be done out of view of the boys. Field dress all cigarettes – **DO NOT** throw cigarette butts on the ground! A small Ziploc snack bag works good to put butts in.

**HEATERS** Absolutely “**NO**” heaters or anything that produces a flame, “of any type”, are allowed inside tents at BSA Activities. Any equipment that runs on propane should absolutely **NOT** be used inside your tent!

**KNIVES**—**NO** sheath knives, machetes, or other oversize knives are to be carried or brought into camp by any parent or Scout. ***SCOUTS ARE REQUESTED “NOT” TO BRING POCKET KNIVES WITH THEM TO THIS CAMPING WEEKEND!!***

**WATER** – Water source is on the side of the Bath House. Units are to provide unbreakable containers to transport water from the water source to their campsite. The water source is not to be used for any other purpose, such as washing up, brushing teeth, cleaning cooking/eating equipment, filling personal drink containers, playing, etc. **Adult and boy leaders are responsible for maintaining discipline at the water source!** Rule violations may mean dismissal from the Camporee.

**LOST AND FOUND** – Items found should be turned in at the Headquarters area. Items may be claimed during the Camporee or at subsequent Roundtables.

**SANITATION** – Indoor male and female bathroom facilities will be available in the bath house. The shower section is **OFF LIMITS**. Per BSA Youth Protection Guidelines Adults and Youth cannot be in the restrooms at the same time. Please knock and announce yourself before entering. Since both adults and youth will be using the facilities, showering is against BSA Youth Protection guidelines.

The cleanliness of the bathhouse is the responsibility of everyone using them. Anybody observed abusing the facilities will be immediately brought to the attention of the unit leader and that unit will be required to clean the facilities and/or pay for any damage.

**TRASH** – All trash must be placed in appropriate containers and removed from the Camporee site at the conclusion of the Camporee. Cooking grease must be placed in a covered container and discarded with the trash. Waste water used for clean-up is to be scattered well away from any inhabited campsite, preferably along a tree line. Solid waste should be screened out before scattering the waste water. Cooking grease and waste water must never be discarded in the latrines. **The Dumpster is located along the fenceline by the headquarters building,**

Leave your area as clean, or cleaner, than you found it – remember, a **Scout is CLEAN!**

**FIRST AID** – A First Aid station located at headquarters will be staffed at all times during the Camporee. **All** injuries should be brought to the attention of the First Aid staff in order to evaluate, treat and log the incident. If a victim cannot be moved, two (2) runners should be dispatched to the First Aid station to summon assistance. The runners must be able to quickly and calmly describe the location and nature of the emergency in order to dispatch proper medical personnel and equipment.

**MEDICAL INFORMATION FORMS** – Each adult and youth member attending the Camporee must provide a properly filled out Medical Information form when registering at the Camporee. A copy of the form is available on the NCACBSA website. Forms will be returned at the conclusion of the Camporee.

Unit leaders should ensure the medical information provided is accurate and that attendees have any required medication and/or equipment with them.

You will be doing **A LOT** of walking. If you have a health problem, **PLEASE** let us know!

**UNIFORMS:** Scout Uniforms (Class A) are requested for the Saturday Opening ceremony and for the Sunday Scouts Own Ceremony for all Scouts. A Scout Activity Uniform (Class B or a scouting t-shirt) is appropriate for all other camp activities

**FOOD** Participants should bring a sack lunch and drink for Saturday and a snack for Cracker Barrel. Dinner and a continental style breakfast will be provided. If any of your group has a food allergy or other special food requirements please notify the camp staff.

**DO NOT KEEP "ANY" FOOD IN YOUR TENT AT NIGHT** unless you want "critters" in your tent with you!! Place any food in your safety vehicle before you go to bed – the same goes for garbage. (Note: candy is food!) Please bring bags of garbage to the dumpster before leaving on Sunday.

**TOUR PERMITS** – Local tour permits are not required for District events.

**CAMP SITES** – All Units will camp in the large fenced in field. There will be no exceptions. Gates will be opened for easy access. All gear must be carried to your camp site.



**VEHICLES – VEHICLES MAY NOT ENTER THE CAMPGROUND AREA AT ANY TIME!** PLEASE LIMIT THE NUMBER OF CARS COMING TO THE EVENT. CARPOOLING IS RECOMMENDED. VEHICLES WILL PARK IN THE DESIGNATED AREA AND ALL EQUIPMENT MUST BE CARRIED TO CAMPSITE. THERE WILL BE NO EXCEPTIONS.

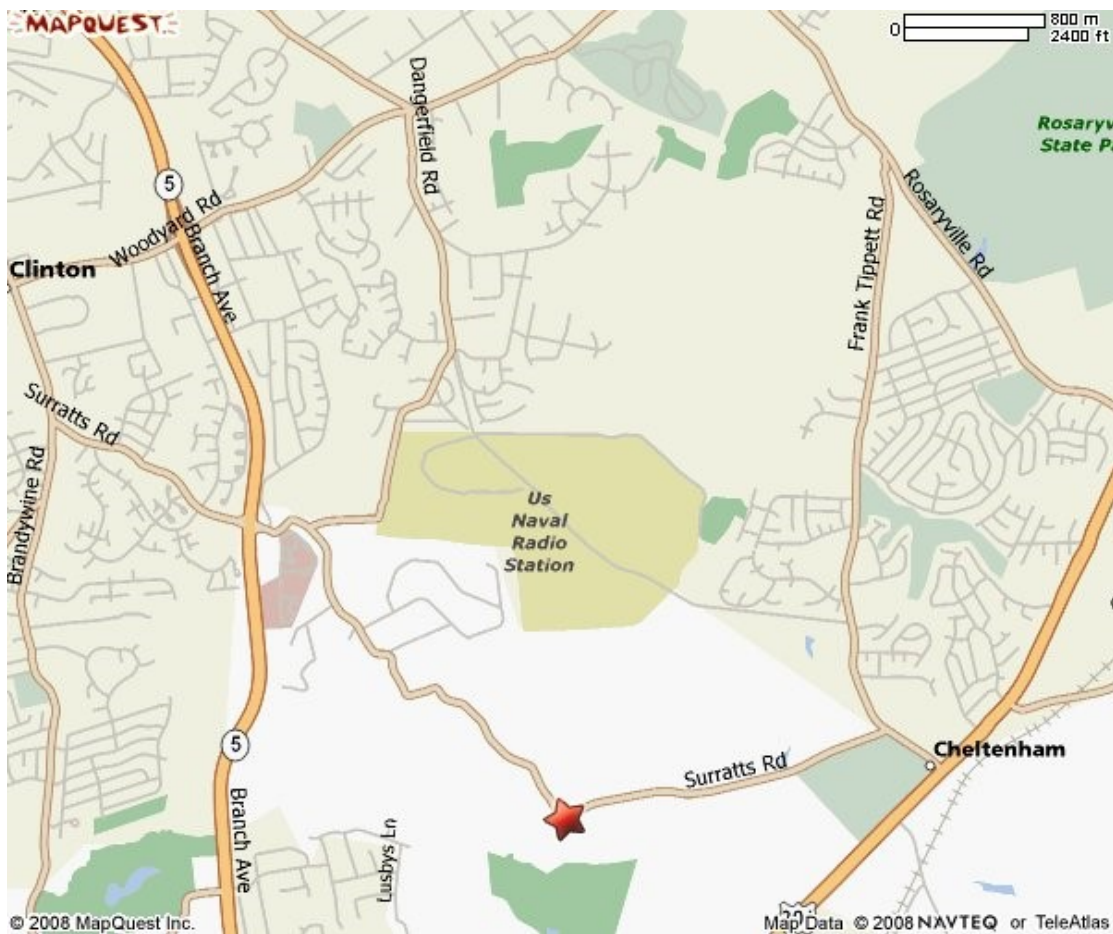
**ELECTRONIC EQUIPMENT** – . Please do not bring electronic devices with you to camp. Leave your games, headphones, portable tvs and so on at home so you can better hear and participate in the exciting activities of the Cub and Pal camp. Parents may bring cell phones. We ask that you keep them in your pockets and use them as little as possible. **Please note: There will be no charging facilities for your electronic devices.**

Unit electronic equipment *in support of health and safety*, such as a Radio or Scanner used to monitor weather information, Amateur/CB Radio communication capability or Cellular Telephones for EMERGENCY purposes only, is permitted.

Family Radio Service (FRS) transceivers tuned to channel seven (7) are used by event staff for communication. Event participants are **not** permitted to use this channel at any time during the event

*TRAVEL DIRECTIONS – Use the below map to determine your best route to the Parent and Pal Day Camp . Camp Address is:*

***Southern Maryland District  
AMERICAN LEGION YOUTH CAMP  
9201 Surratts Road  
Cheltenham, MD 20623***



[All rights reserved. Use Subject to License/Copyright | Map Legend](#)