



ASLA Newsletter

NOVEMBER
2024

ISSUE

PRESIDENT
MESSAGE

TRUSTEE
UPDATE

UPCOMING
EVENTS!

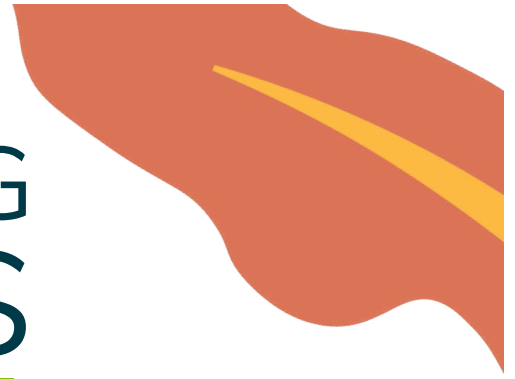


ASLA
NEVADA



UPCOMING EVENTS

Las Vegas, Nevada



AWARD OF HONOR NOMINATION

Nominate today! This award recognizes a non-member or organization for outstanding stewardship in our field.

Deadline: December 23, 2024

How to Nominate: Email your nominee to pastpresident@nvasla.com

SPRING EXHIBIT

Entries due

FRIDAY, DECEMBER 13, 2024 until 6PM PST

Deliver printed artwork for hanging on

FRIDAY, MARCH 14, 2025

Location

925 Riverside Drive, Reno, NV 89503

PINK FLAMINGO

Saturday, January 18th, 2025

Time: 5:30 - 9:30 PM

Location: Balkan Bar & Grill 953 E Sahara. Unit B-26 Las Vegas, NV



nvasla.com

Smart Play,[®]
meet affordable,
custom design



SM
landscape
structures[®]

Ether@exerplay.com
800-457-5444
exerplay.com

exerplay

Playgrounds · Splash Pads · Shade · Safety Surfacing · Site Furnishings · Outdoor Fitness · Sports Equipment

President Message



As we approach the end of the year, it's a great time to reflect on all we've accomplished together and look forward to the exciting opportunities ahead. November is a month to give thanks, and I want to express my deep appreciation for each of you—our members—whose dedication, passion, and expertise continue to shape the future of landscape architecture in our community.

This year has seen outstanding projects, inspiring collaborations, and continued growth in our profession. Whether through educational programs, networking events, or the ongoing work we do within our cities and landscapes, we are making meaningful strides in enhancing the environments where we live, work, and play.

Looking ahead, we have a number of exciting events and initiatives on the horizon, which promises to be an incredible opportunity to connect with colleagues, share insights, and advance our collective knowledge. I encourage you all to get involved and continue building our network of professionals who strive to create resilient, sustainable, and beautiful spaces for generations to come.

In this season of gratitude, I am reminded of how fortunate we are to be part of a profession that not only transforms the physical landscape but also improves the quality of life for so many. Let us continue to support one another, advocate for our profession, and lead with innovation and integrity as we shape the future of our communities.

Thank you for all that you do for NVASLA and for the lasting impact you have on the built environment. Wishing you all a wonderful holiday season filled with warmth and inspiration.

Geoffrey Schafler

Villago

Versatile Playhouse with numerous Climbing Elements



Contact
Rhetta to
learn more!


Berliner
Play equipment for life



National Homeless Youth Awareness Month, Native American Heritage Month

This November, we invite you to explore two meaningful stories featured by ASLA. In honor of National Homeless Youth Awareness Month, learn how thoughtful landscape design can create inclusive spaces that provide safety, support, and hope for vulnerable youth. Additionally, during Native American Heritage Month, celebrate the rich cultural contributions of Indigenous communities and discover how their traditional knowledge is influencing sustainable design practices today. Dive into these inspiring articles and join the conversation about building a more compassionate and inclusive world.

First-ever compendium of indigenous technologies provides a powerful toolkit for climate-resilient design





[**Read Here**](#)

Collaboration with Indigenous Communities to Inform Design for Significant Landscapes

[**Read Here**](#)





PRECISION WATERING. EFFORTLESS CONTROL.

ESP-LXME2 CONTROLLER

-  **Flexible, Modular Design**
12 stations out of the box with modular upgrades for up to 48 stations
-  **Intuitive Operation**
40 easy-to-navigate programs with 10 start times each, featured on a large, backlit display
-  **Powerful Water Management**
Rain Delay, Cycle + Soak™, Seasonal Adjust & Advanced ET Watering
-  **WiFi-Compatibility**
Add LNK2 WiFi Module for full remote access via the Rain Bird app



RC2 CONTROLLER

-  **24/7 Remote Access, Anywhere in the World**
-  **Mobile Pairing at the Push of a Button**
-  **Built-in, Water-Saving Technology**
-  **Convenient, Saved Scheduling Templates**

Questions? Contact Tiffany Haveron
435-720-3897 | thaveron@rainbird.com





ASLA
NEVADA

DESIGN SHOWCASE

WORLD LANDSCAPE ARCHITECTURE MONTH

Spring Exhibition

All Nevada-registered Landscape Architects, regional Landscape Architecture Firms, L.A. Students and LAIT (Landscape Architects-in-Training) are invited to submit design work for the first exhibit of its kind in Nevada – showcasing the work of our profession for view by the general public.

Hosted by the American Society of Landscape Architects, Nevada Chapter, this exhibition is an opportunity to celebrate the art of landscape architecture and to shine a light on our profession as a part of World Landscape Architecture Month in April!

The goals of this exhibition are to celebrate landscape architecture, to bring attention to the many ways our work benefits Nevada communities and to share the profession of landscape architecture with the public, elected officials, friends and family.

Exhibition schedule

- 🚩 Deliver printed artwork for hanging on **FRIDAY, MARCH 14, 2025**
- 🚩 Exhibit dates **MARCH 24 – APRIL 25, 2025**
- 🚩 Entries due **FRIDAY, DECEMBER 13, 2024 until 6PM PST**
Entry Fee to the NVASLA must be postmarked by 12/13/24
- 🚩 Location **925 Riverside Drive, Reno, NV 89503**
- 🚩 Hours **MONDAY-FRIDAY 9:00am-4:00pm**
Free of charge and open to the public

🗨️ Opening Reception **THURSDAY, MARCH 27, 2025** kickoff to April's WLAM!

🚩 Selected Works Email Notification
FRIDAY, FEBRUARY 14, 2025

[Download Brief](#)

Award of Honor Nomination



Nominate today!

This award recognizes a non-member or organization for outstanding stewardship in our field.

Deadline: **December 23, 2024**
How to Nominate: Email your nominee to pastpresident@nvasla.com.

Custom design,
without the custom price



SM
landscape
structures®

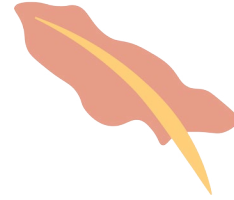
Ether@exerplay.com
800-457-5444
exerplay.com

exerplay

Playgrounds · Splash Pads · Shade · Safety Surfacing · Site Furnishings · Outdoor Fitness · Sports Equipment



Trustee Update



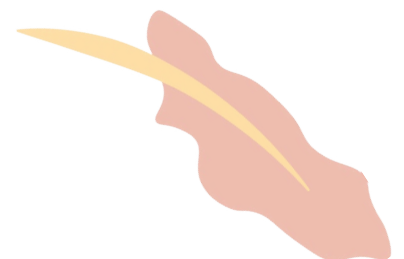
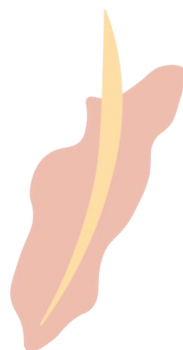
Barb Santner/NVASLA Trustee
November 22, 2024

2025–2026 ASLA Legislative Priorities Survey – Nevada Chapter Data

The ASLA Government Affairs team appreciated our Nevada chapter's efforts in participating in this year's Federal and State Legislative Priorities Survey.

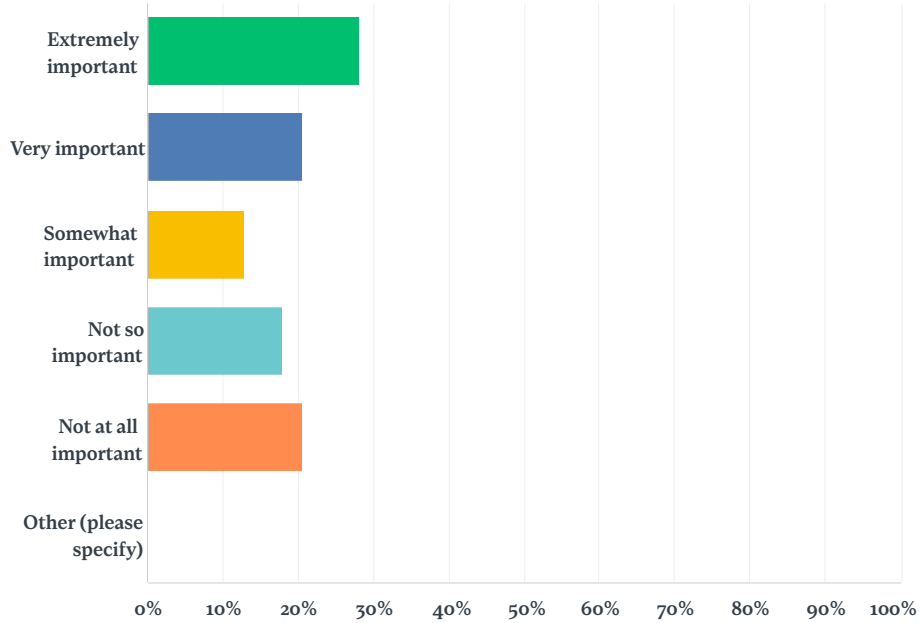
ASLA Government Affairs solicits biennial feedback from the entire ASLA membership to determine the membership's legislative interests and priorities. The primary objectives of the Federal & State Legislative Priorities Survey are to develop a federal policy agenda for the upcoming Congressional session and to provide Chapter leaders information on the policy issues its members see as priority.

To assist chapter leadership in developing state legislative agendas and an advocacy plan, ASLA provided tailored chapter results of our membership. Our chapter had 39 responses to the survey. Thank you for participating! The survey results are below.



Q1 How important is climate change policy to you, personally?

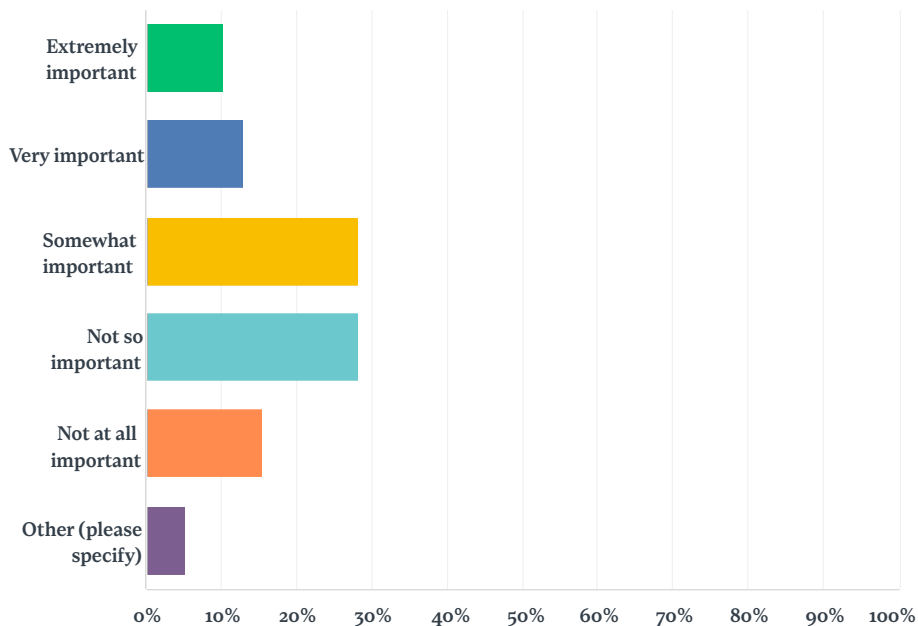
Answered: 39 Skipped: 0



2025-2026 Federal & State Legislative Priorities Survey

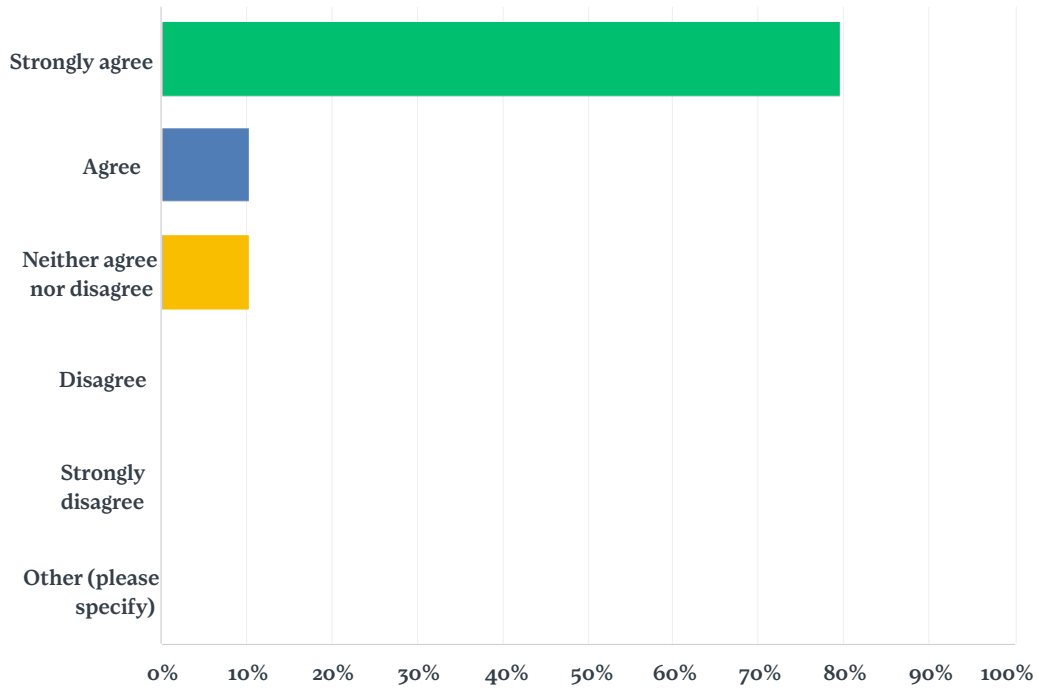
Q2 How important is climate change policy to your professional projects?

Answered: 39 Skipped: 0



Q3 At the state level, ASLA should prioritize promotion and defense of Licensure.

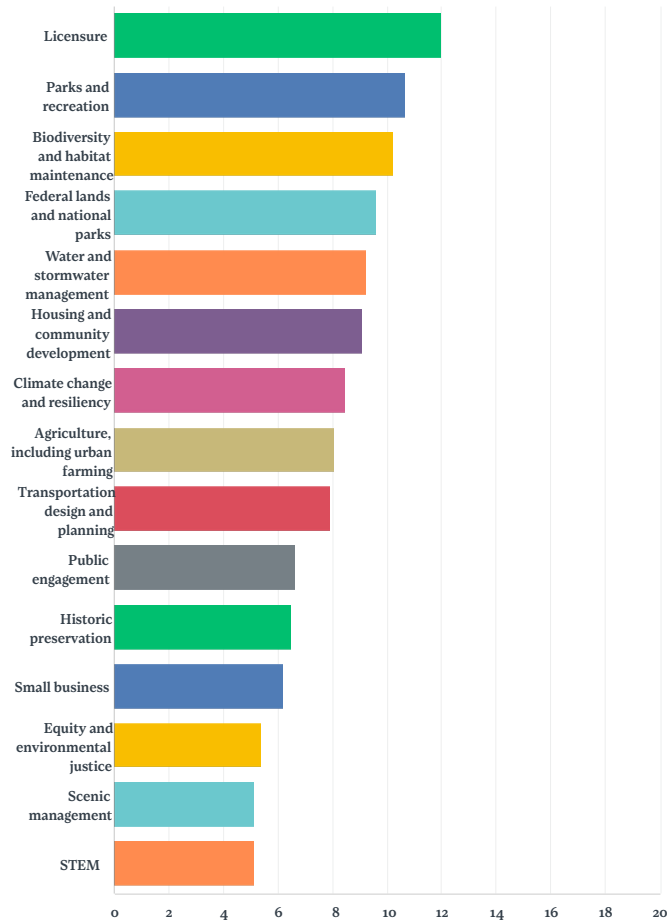
Answered: 39 Skipped: 0



2025-2026 Federal & State Legislative Priorities Survey

Q4 Please rank the following issues based on importance to the profession, with #1 being the most important (arrange the issues using either the arrows or the click-and-drag feature)

Answered: 39 Skipped: 0



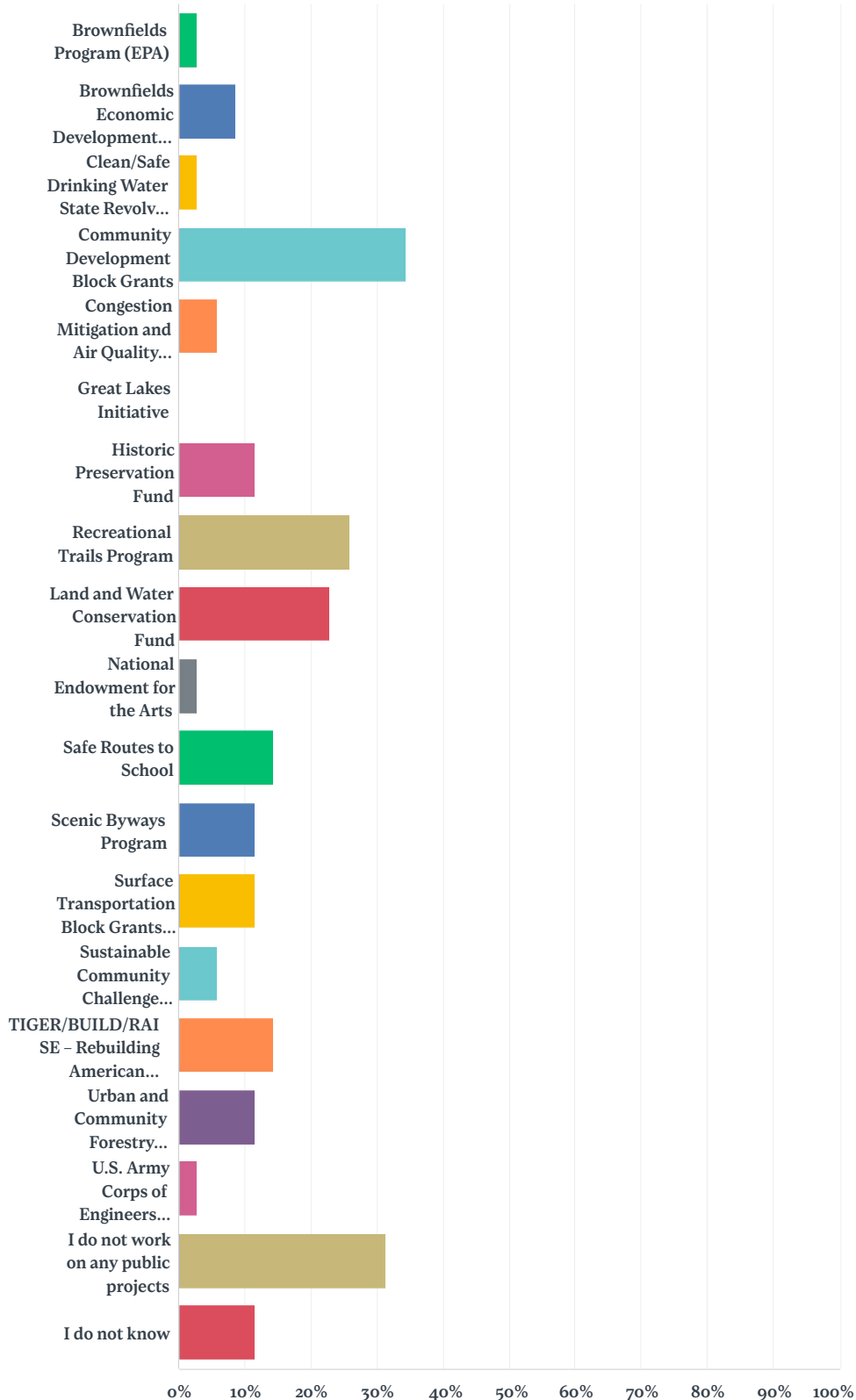
2025-2026 Federal & State Legislative Priorities Survey

	1	2	3	4	5	TOTAL	WEIGHTED AVERAGE
Licensure	47.62% 10	14.29% 3	9.52% 2	9.52% 2	19.05% 4	21	3.62
Federal lands and national parks	27.27% 3	27.27% 3	18.18% 2	9.09% 1	18.18% 2	11	3.36
STEM	33.33% 2	16.67% 1	16.67% 1	16.67% 1	16.67% 1	6	3.33
Small business	0.00% 0	50.00% 6	25.00% 3	25.00% 3	0.00% 0	12	3.25
Historic preservation	25.00% 1	25.00% 1	25.00% 1	0.00% 0	25.00% 1	4	3.25

**Q6 All public projects utilized some form of public funding/financing.
Please select all federal and state programs that fund your projects:**

2025-2026 Federal & State Legislative Priorities Survey

Answered: 35 Skipped: 4

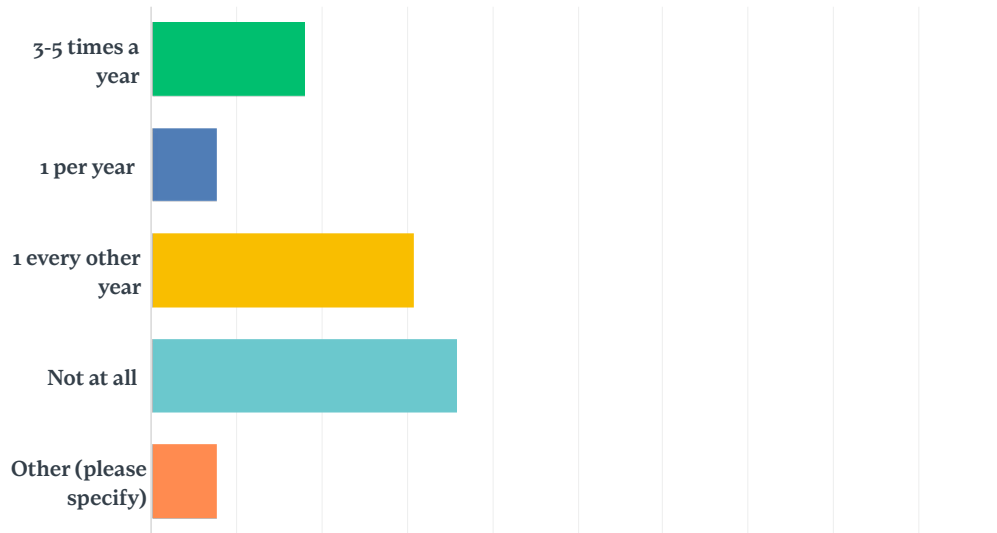


ANSWER CHOICES	RESPONSES
Brownfields Program (EPA)	2.86% 1
Brownfields Economic Development Initiative (HUD)	8.57% 3
Clean/Safe Drinking Water State Revolving Funds	2.86% 1
Community Development Block Grants	34.29% 12
Congestion Mitigation and Air Quality (CMAQ) Program	5.71% 2
Great Lakes Initiative	0.00% 0
Historic Preservation Fund	11.43% 4
Recreational Trails Program	25.71% 9
Land and Water Conservation Fund	22.86% 8
National Endowment for the Arts	2.86% 1
Safe Routes to School	14.29% 5
Scenic Byways Program	11.43% 4
Surface Transportation Block Grants Set-Aside	11.43% 4
Sustainable Community Challenge Grants	5.71% 2
TIGER/BUILD/RAISE – Rebuilding American Infrastructure with Sustainability and Equity	14.29% 5
Urban and Community Forestry Programs	11.43% 4
U.S. Army Corps of Engineers programs	2.86% 1
I do not work on any public projects	31.43% 11
I do not know	11.43% 4
Total Respondents: 35	

#	OTHER (PLEASE SPECIFY ALL STATE-LEVEL FUNDING PROGRAMS OR FEDERAL PROGRAMS NOT LISTED ABOVE)	DATE
1	SNPLMA (Southern Nevada Public Lands Management Act)	11/11/2024 12:12 PM
2	ARPA	11/9/2024 2:46 PM
3	SNPLMA	6/18/2024 4:33 PM
4	CALTRANS grants, indigenous tribe funds	6/14/2024 9:49 PM
5	Southern Nevada Public Lands Management Act Funding	6/13/2024 3:53 PM
6	SNPLMA (So. NV)	6/11/2024 4:24 PM
7	SNPLMA, Conserve Nevada Stage Grants	6/11/2024 9:12 AM
8	SNPLMA (Las Vegas)	5/28/2024 6:49 PM
9	Southern Nevada Public Lands Management Act	5/15/2024 4:51 PM

Q7 How often do you work on public engagement and/or visioning with small, rural, or underserved communities?

Answered: 39 Skipped: 0



YOU ARE CORDIALLY INVITED TO...

The 2024 Pink Flamingo Celebration



Please join us to celebrate in your best Masquerade Cocktail Attire and meet us in the Forbidden Forest for dinner, raffles and more! Make sure to bring your mask!

Balkan Bar & Grill
 953 E Sahara, Unit B-26
 Las Vegas, NV
 Saturday, January 18th, 2025
 Time: 5:30 pm - 9:30 pm

EARLYBIRD SPECIAL till December 17th	STANDARD PRICING
Tickets: General - \$70.00	Tickets: General - \$80.00
Students - \$15.00	Students - \$25.00
Table of 6 - \$400.00	Table of 6 - \$480.00



US Patent D604 712 S.

Connecting since 1962.

THE STELLA OF SUNNE™ COLLECTION.

Celebrating over 60 years, Victor Stanley designs, engineers and manufactures timeless site furnishings so you can bring communities to life. Stella of Sunne™ features a classic, minimalist look inspired by Scandinavian design aesthetics.

Contact Florence Gbenro at florenceg@victorstanley.com

VICTOR  STANLEY®

Create a timeless moment.®



VICTORSTANLEY.COM


Live Presentation

The ASLA Online Learning series offers the opportunity to tune in live to ask experts questions, while earning PDH.



Inclusive Play Matters: Evidence-Based Design Best Practices for Play and Recreation Destinations - 1.0 PDH (LA CES/HSW)

Already registered? Log in now.
(<https://my.asla.org/ElevateSSO/sso.aspx?RETURNURL=https%3A%2F%2Flearn.asla.org%2Fplay-matters-evidence-based-design-best-practices-for-play-and-recreation-destinations-10-pdh-la-ceshsw>)

 Includes a Live Web Event on 12/03/2024 at 11:00 AM (PST)

Overview

Speaker(s)

Contents (1)

Sponsored by PlayCore (<https://www.playcore.com/>)

Thoughtfully break down physical and social barriers to create a welcoming atmosphere and ensure parks intentionally support the developmental benefits of inclusive, intergenerational play! Research findings and new data offer unique insights to demonstrate the positive impact of designing outdoor destinations to address the diverse needs of the whole child, the whole environment, and the whole community.

Learning objectives:

- Define playground terminology to clarify the differences between accessible design, universal design, inclusion, and the 7 Principles of Inclusive Playground Design.
- List at least 3 evidence-based design best practices that thoughtfully meet the physical, social-emotional, sensory, cognitive, and communicative needs of all children, including those with disabilities in playground settings.
- Summarize the positive benefits and impact that inclusive play destinations have on community health and wellness.
- Identify key steps to successfully advocate for inclusive play and recreation destinations.

Hosted by ASLA's Children's Outdoor Environments Professional Practice Network (PPN)
(<https://www.asla.org/children.aspx>)

Photo: McCandless Park in Milpitas, California / image: © 2024 PatrickSchneiderPhoto.com courtesy of PlayCore

landscapeforms®

Monterey

Softly Sophisticated, Comfortably Composed



**Nevada
Sales
Agency**

Contact us today!

Ed Forlani
702.468.9655
eforlani@nevadasalesagency.com
Jazmin Miller
702.343.7434
jmill@nevadasalesagency.com

Kathy Wilson
702.371.5045
kwilson@nevadasalesagency.com
Lizzy Bradley
702.278.3655
ebradley@nevadasalesagency.com



CONNECTION

RESOURCES & ACTIVITIES

Tips for test day

If you're taking the L.A.R.E. soon, make sure you check out [these tips](#) to ensure you're set up for success.

We're here to help

CLARB

Our [support team](#) offers personalized guidance for your unique licensure journey. We're available to answer your questions Monday – Friday, 9 a.m. – 5 p.m. ET at 571-432-0332 or info@clarb.org.

EXAM HAPPENINGS

2025 Exam Dates

CLARB

Mark your calendar and make a plan to complete all sections of the L.A.R.E. so that you can become a licensed landscape architect. [View exam dates](#) for April 2025, August 2025 and December 2025.

GET INVOLVED

Volunteer applications due Nov. 30

Are you ready to make a lasting impact on the landscape architecture profession? We are looking for forward-thinking individuals to help guide the future of

landscape architecture regulation by volunteering through CLARB. [Learn more](#) about the many ways to get involved.

Free leadership training: Thinking and Acting Beyond Orthodoxy

Wednesday, Dec. 4 | 3:00-4:30 p.m. ET | No cost to participate

Jeff De Cagna, executive advisor of Foresight First, will explain what orthodox beliefs are and why they are important for individuals and organizations to be aware of and address. Come away from this presentation with ways you can begin to question your own orthodoxies and how that can help you in your decision making, work environment and more. [Register to attend](#).

GOVERNMENT RELATIONS & ADVOCACY

New Research: Exploring Public Opinion of Licensing and AI

A recent national survey was conducted to understand public opinion on AI emergence in high-impact fields, voters' level of trust in AI for critical decision-making, and voters' beliefs about who should be involved in developing frameworks for AI governance and regulation. [View the one-pager \(PDF\)](#).

ON THE CALENDAR

Nov. 28-29: CLARB offices closed

Nov. 30: Last day to apply to be a CLARB volunteer

Dec. 2-18: Take the L.A.R.E.

Dec. 4: Thinking and Acting Beyond Orthodoxy webinar

Dec. 24-Jan 1: CLARB offices closed

CLARB emails have changed. Are you receiving them?

We have transitioned to a new email platform to provide more tailored messaging and give you greater control over the types of communications you receive from CLARB.

The first message was sent Nov. 1 with the subject line: *New! Choose your CLARB email subscriptions.*

If you did not receive this message, please follow these steps:

1. Check your spam/junk folder.
2. [Opt in to choose your subscriptions.](#)
3. [View the archive](#) of past emails you may have missed.
4. Consider adding info@clarb.org to your contacts/safe senders to ensure you receive future emails from CLARB.

INDUSTRY NEWS

Economic gains from climate-focused landscape architecture solutions

The Dirt

The ASLA Fund highlights landscape architecture's economic benefits in addressing climate change, emphasizing improved health, biodiversity and resilience. Green roofs, rain gardens and other nature-based designs offer substantial cost savings and increased urban resilience, supporting sustainable project planning. [Read More](#)

Integrating landscaping with CPTED to boost urban safety and security

Security Management

Landscaping plays a critical role in crime prevention through environmental design, or CPTED, by enhancing visibility, directing access and creating a sense of ownership. Thoughtful greenery design not only beautifies spaces but also deters crime, promoting safer environments. [Read More](#)

Toolkit for building urban climate resilience in cities

Springer Nature

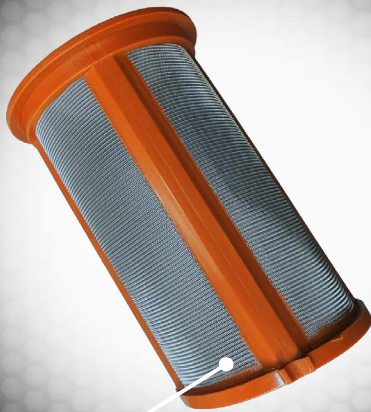
Urban areas increasingly face severe climate impacts, worsened by urbanization and outdated infrastructure. This study explores resilience strategies, examining Hunter's Point South Park after Hurricane Sandy to develop a comprehensive toolkit promoting sustainable, climate-resilient urban design through community and stakeholder engagement. [Read More](#)

California's San Joaquin Valley faces groundwater depletion crisis

The Hill

California's San Joaquin Valley is experiencing significant land subsidence due to excessive groundwater extraction. This overuse has led to the ground sinking, threatening infrastructure and reducing water storage capacity. [Read More](#)

JARTOP BASKET FILTER



DIAGONAL MATRIX SCREEN™
Copper Infused Reinforced Frame
Pressure Activated Inlet Seal
Industries Largest Filtration Area



X-RING SEALED JARTOP CAP™

Reinforced Engineered
Grade Polymer

Threads Available in
3/4" or 1" NPT

PART NUMBERS
3/4" - GJT-075
1" - GJT-100



More Information



www.gphirrigation.com



866.582.9684



MADE IN
GPH
THE USA

landscapeforms®

Every Day Chair

Making Every Day a Little Less Everyday



**N
S
A**

**Nevada
Sales
Agency**

Ed Forlani
eforlani@nevadasalesagency.com
702.468.9655

Jazmin Miller
jmiller@nevadasalesagency.com
702.343.7434

Kathy Wilson
kwilson@nevadasalesagency.com
702.371.5045

thank you to all of our sponsors

platinum



gold



northern section



silver

