



ADVANCING INTEGRATED HEALTHCARE

Welcome

Care Transformation Collaborative of Rhode Island

Patricia Flanagan, MD, FAAP, PCMH Kids Co-chair

Elizabeth Lange, MD, FAAP, PCMH Kids Co-chair

Improving Child Health in RI Meeting | April 4, 2024

Agenda

Topic Presenter(s)	Duration
Welcome & Opening Remarks <i>Pat Flanagan and Beth Lange, Co-chairs</i>	5 minutes
Primary Care Provider Workforce Task Force <i>Debra Hurwitz, Executive Director, CTC-RI</i>	25 minutes
KIDSNET features and reports <i>Janet Limoges</i>	20 minutes
Discussion & Next Steps <i>Pat Flanagan and Beth Lange, Co-chairs</i>	10 minutes



ADVANCING INTEGRATED HEALTHCARE

Primary Care Provider Workforce Task Force

Improving Child Health In Rhode Island

April 4, 2024

Debra Hurwitz, MBA, BSN, RN

Executive Director

Care Transformation Collaborative of RI

CTC-RI Primary Care Workforce Taskforce Organization

Task Force Co-Chairs

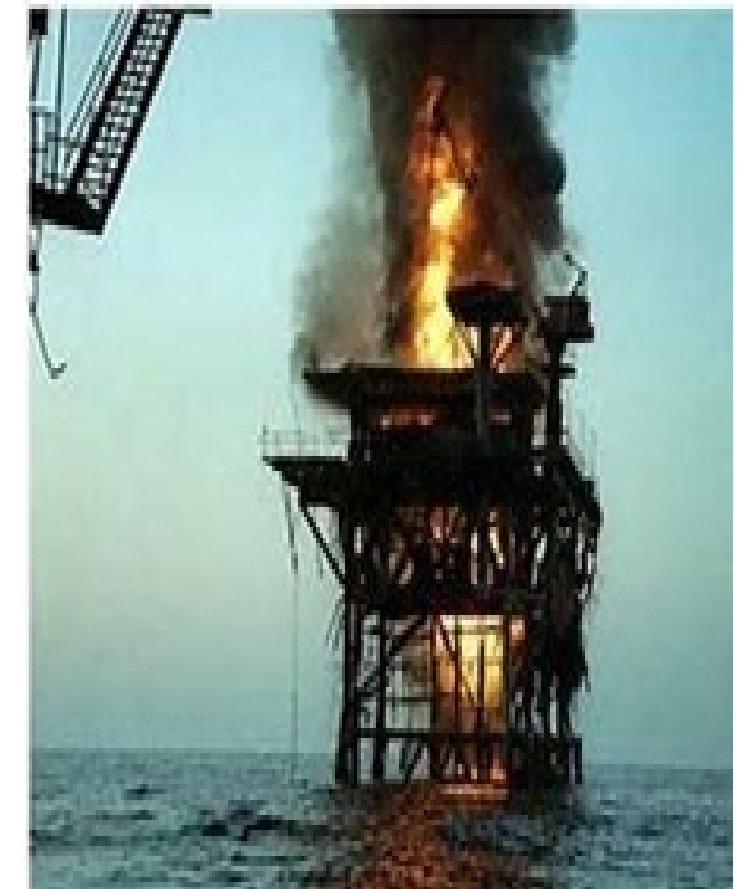
- Jeffrey Borkan, MD, PhD – Assistant Dean for Primary Care – Population Medicine at the Warren Alpert Medical School of Brown University
- Denise Coppa, PhD, CNP, FAAN, FAANP, Program Director, Family NP Program at University of Rhode Island

• Project Team:

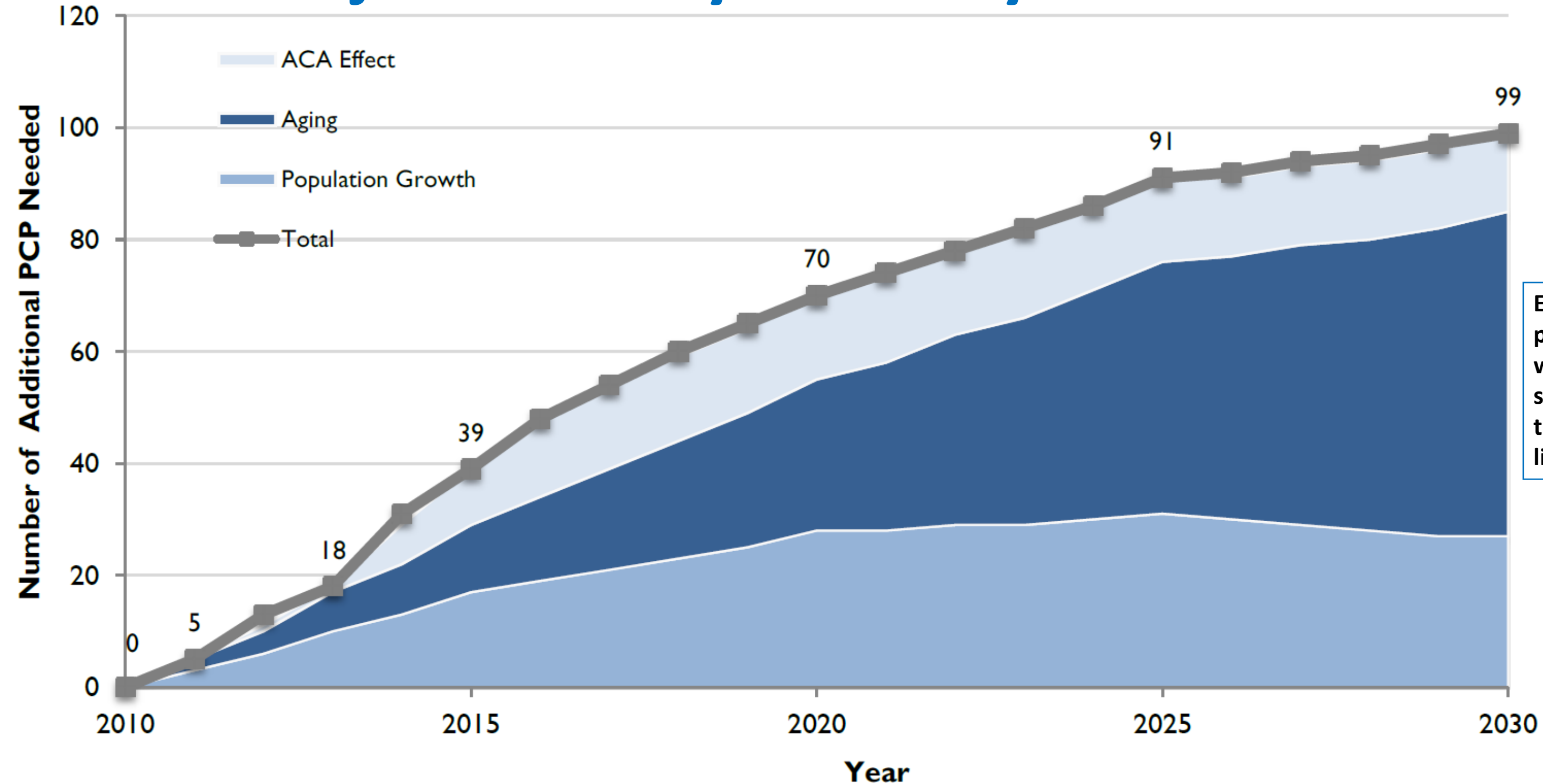
- Debra Hurwitz, MBA, BSN, RN – Executive Director – Care Transformation Collaborative Rhode Island
- Pat Flanagan, MD – Clinical Director and PCMH Kids Co-Chair – Care Transformation Collaborative Rhode Island
- Andrew Saal, MD, MPH – Primary Care Consultant
- Yolanda Bowes, Program Manager – Care Transformation Collaborative Rhode Island

Primary Care Burning Platform: the Crisis is here

- **Waning Access** to Primary Care in RI with an ever-growing deficit – while RI population ages and expands – increase by 35,576 since 2019 – with increased healthcare utilization
- **Rampant Burnout/ Moral Injury**
 - Pandemic exacerbated situation; some practices did not survive
 - Electronic health record/administrative task growth
 - Cutting back, early retirements, job changes
 - High student debt
- **Health Systems Crush/Collapse**
 - Fragility and closure of healthcare systems (MHRI, Compass Medical, other)
 - Competition from for-profits/venture capital
 - Salary disparities –locally, regionally, and nationally



Rhode Island Project Primary Care Physicians Need*



Even in 2013, it was projected that there would be a RI PCP shortage. Post COVID the numbers are likely much greater.

*Petterson, Stephen M; Cai, Angela; Moore, Miranda; Bazemore, Andrew. State-level projections of primary care workforce, 2010-2030. September 2013, Robert Graham Center, Washington, D.C.



“Primary Care Access for All: A Strategic Road Map for Primary Care Workforce Capacity Building”

A Report of the CTC-RI Primary Care Workforce Task Force – January 2024

[Link to Report](#)

- **Vision:** Rhode Island will be the best in the nation for all measures of population health, health equity and health system performance by providing access to Advanced Primary Care for all its residents.
- **Definition of Advanced Primary Care:** “High-quality primary care is the provision of whole person, integrated, accessible, and equitable health care by interprofessional teams who are accountable for addressing the majority of an individual’s health and wellness needs across settings and through sustained relationships with patients, families, and communities.” (*NASEM Report*)
- **Mission:** Build a strong and robust primary care delivery system across the state that recruits, trains, retains, and sustains a pipeline of primary care providers that deliver exceptional, accessible, patient-centered care.

- 1.Reform payments and incentives to primary care providers to create specialty and regional parity.
- 2.Establish baseline and performance targets for the primary care workforce using existing and to-be-developed data sources for ongoing monitoring.
- 3.Increase the recruitment of medical students, residents/fellows, as well as nurse practitioners (NPs) and physician assistants (PAs) entering primary care. Support strategies to reduce tuition and educational debt for providers entering primary care practices in Rhode Island.
- 4.Expand primary care workforce to better reflect the state's diversity while fostering healthcare equity and inclusion (DEI) for all Rhode Islanders.
- 5.Increase the number of high-quality primary care training sites willing to educate the next generation of primary care students.
- 6.Enhance clinical training experiences within practices using advanced patient-centered medical home (PCMH) principles such as team-based care, integrated behavioral health, population health strategies, and value-based reimbursement.

Task Force Priority Legislation:

- Primary Care Training Sites Program
- The Medical Primary Care Scholarship Program

Rhode Ahead Priority Legislation:

- Ladders to Licensure
- Health Professional Loan Repayment

Bill Numbers S2716 (Senator Lauria) & H7902 (Representative Fogarty)

- Compensation to primary care practices to serve as enhanced interdisciplinary clinical training sites.
- Recruit 30 primary care training sites increasing training slots by 50% for family nurse practitioner and physician assistant students and physician residents (trainees).
- Development of a standardized curriculum
 - A 5-hour didactic that will introduce trainees to the Patient Centered Medical Home and how the principles of the model have been operationalized in the primary care delivery setting.
 - Inclusion of team-based care team members such as the nurse care manager, behavioral health clinician, community health worker and pharmacist
 - Multi-disciplinary case review

Bill Numbers S2717 (Senator Lauria) and H 7903 (Representative Fogarty)

- State funding to fund scholarships for students entering medical school, or a graduate nurse practitioner or physician assistant program
 - Up to \$70,000 per year for 4 years for 5 students entering medical school
 - Up to \$47,000 per year for 2 years for 5 students entering Nurse Practitioner programs and 5 students entering Physician Assistant programs
 - Must commit to practice primary care in Rhode Island for 8 years after graduation/completion of residency
 - 1 FTE program manager
 - Propose RIDOH management with Loan Repayment Programs

Bill Numbers S2867 (Senator Cano) and H 8078 (Representative Tanzi)

Establishes the Ladders to Licensure Grant Program

- Under this Program, EOHHS will work with employers and public education partnerships to help paraprofessional healthcare workers pursue education to ‘climb the ladder’ to licensed positions. Funds will be used to provide supports so working adults can obtain health professional higher education degrees and license.
- There will be three or four grantee partnerships with at least one focused on behavioral health and one on nursing.
- Employers will be required to contribute a twenty-five percent (25%) in-kind match and ten percent (10%) cash match.
- The request includes \$1,000,000 for fiscal year 2025 to support the first of this three-year initiative.

Bill Numbers:

Senate bill to be introduced by Senator Miller

H 8079 (Representative Tanzi)

- Request is to add \$1,000,000 to existing Health Professional Loan Repayment Program.

All four bills directly impact the health care workforce.

Future primary care providers:

Medical Primary Care Scholarship Program

Strengthening the current healthcare workforce:

Primary Care Training Sites

Loan Repayment

Ladders to Licensure

Working with Advocacy Solutions to support the communication plan.



Discussion and Next Steps



KIDSNET Features and Reporting by Janet Limoges



Discussion and Next Steps

October 31, 2024 CTC-RI Annual Conference

April 5, 2024 Deadline
Call for Abstracts:

<https://public.3.basecamp.com/p/stWedSGDesr6K6DT7G4NJQoo>

CTC-RI Annual Conference



Call for Abstracts

“Investing in Primary Care & Health Equity”



The Care Transformation Collaborative of Rhode Island invites primary care team members, systems of care, health plans, community-based organizations and others to submit abstracts for concurrent sessions at our conference on October 31, 2024 hosted at the Crowne Plaza in Warwick, RI.

Deadline
April 05, 2024

Presenters will be offered a \$500 stipend per presentation!

Submit Now!



Friendly Reminders of Upcoming Meetings...

Date	Meeting
Apr 16th	<p>Best Practices in Team-Based Care, 8:00-9:00AM, https://ctc-ri.zoom.us/j/93572867243?pwd=L1h2dDkvc2VMeklRRW1iRlZ2NnJTQT09 Meeting ID: 935 7286 7243; Passcode: 646876; One tap mobile: 6468769923,,93572867243#,,,,,0#,,646876#</p> <p><i>CME credits available</i></p>
May 2nd & June 6th	<p>Virtual Coffee Break with Pat & Beth, 7:30-8:00AM https://ctc-ri.zoom.us/j/95963024930?pwd=NHMzOGVZdEkzdTQyVk0yZE9CWl80dz09 Meeting ID: 959 6302 4930; Passcode: 646876; One tap mobile: 6468769923,,95963024930#,,,,,0#,,646876#</p>
June 14th	<p>Breakfast of Champions, 7:30-9:00AM Register in advance for this meeting series: https://ctc-ri.zoom.us/meeting/register/tZUqdeCqrT0sGN0bQMf5VdMBLCx9PRh0zl2F</p> <p><i>CME credits available</i></p>

