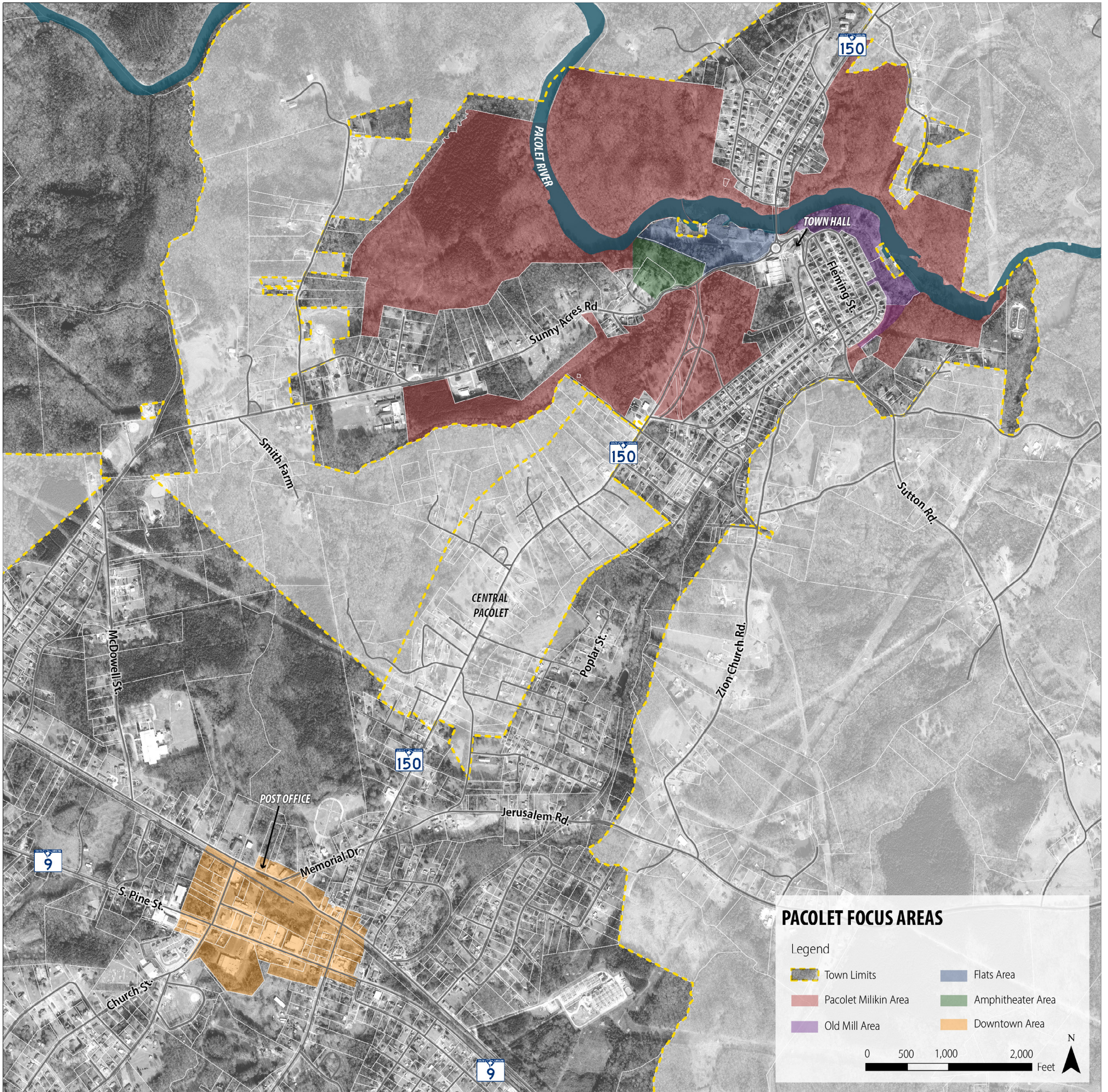


FOCUS AREAS

The Comprehensive Plan includes a master planning effort for five focus areas that include the downtown area and four areas along the riverfront owned by Pacolet Milliken that were formerly occupied by Pacolet Mills. The master plan will include recommendations for redevelopment opportunities, urban design improvements, and economic development strategies. The general boundaries of the master plan focus areas are shown below.



MASTER PLAN
www.PlanPacolet.com



VISION & GUIDING PRINCIPLES

VISION

Establish the Town of Pacolet as a vibrant cultural and outdoor recreation destination

GUIDING PRINCIPLES

Activate the river

Promote historic and cultural resources

Facilitate downtown development

Improve community appearance

Connect people and places

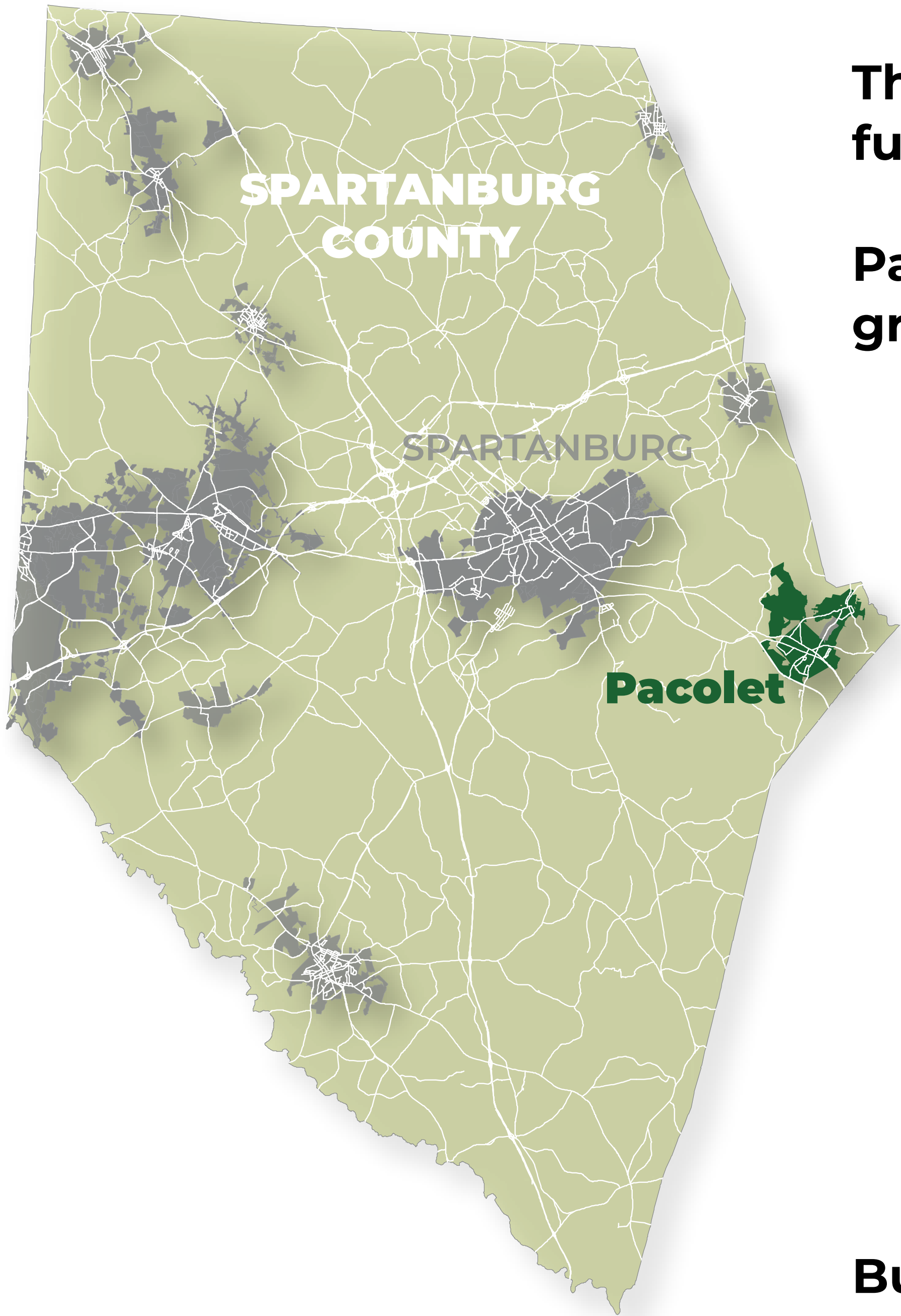


MASTER PLAN

www.PlanPacolet.com



THINK REGIONALLY



The tourism economy is helping to fuel Spartanburg County's future

Pacolet should connect to that growing regional economy through:

- The Pacolet River
- The Dan Trail
- Croft State Park
- Pacolet River Heritage Preserve
- The Carolina Thread Trail
- US 176 and SC 150 Connections

Business Development Opportunities for Outdoor Recreation can include:

- Improved Canoe / Kayak Livery Services
- Hiking, Biking, and Other Outdoor Recreation Services / Rentals
- Camping and "Rustic" Lodging
- Zip-lining

The Daniel Morgan Trail System (The Dan) will soon tie together more than 50 miles of trails across the County



MASTER PLAN

www.PlanPacolet.com



DOWNTOWN IDEAS



Existing Conditions



Potential Improvements



MASTER PLAN
www.PlanPacolet.com



REGIONAL CONNECTIONS



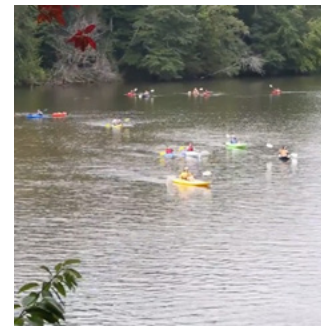
DAN TRAIL

The Daniel Morgan Trail System, known as “The Dan,” is one of the region’s most transformative projects, linking residents across the County to jobs, educational opportunities, transit, and recreation.



MILLS AND HILLS BIKE TRAIL

The Mills and Hills Bike Trail covers almost 30 miles between Pacolet, Clifton, and Glendale. It largely follows major roads.



PACOLET BLUEWAY

The Pacolet River and Lawson’s Fork Creek Blueway provides over 50 miles of river travel and recreation that begins near downtown Spartanburg and extends to the Town of Lockhart.



PACOLET RIVER HERITAGE PRESERVE

This 258 acre preserve protects two prehistoric soapstone outcrops that date back 3-5,000 years ago and provides habitat for uncommon plant species. It includes natural areas and a trail.



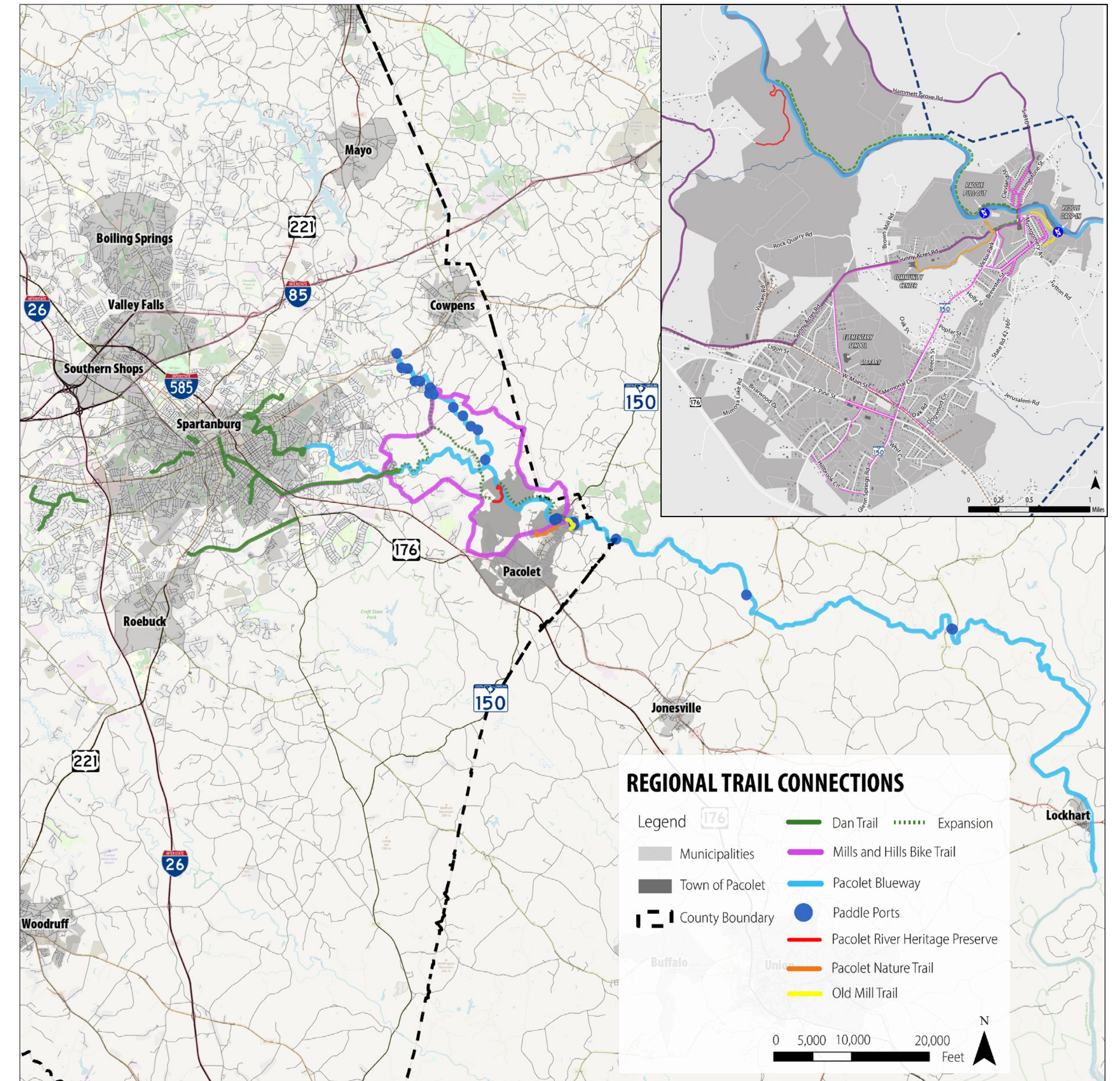
PACOLET NATURE TRAIL

This 1.5 mile paved trail stretches through the woods from the Middle School of Pacolet to Park Street near the Amphitheater.



OLD MILL TRAIL

The Old Mill Trail follows the Pacolet River from the Kayak Put-In location east of Town Hall to the edge of the Town. It provides numerous opportunities to view remains of the old mills.

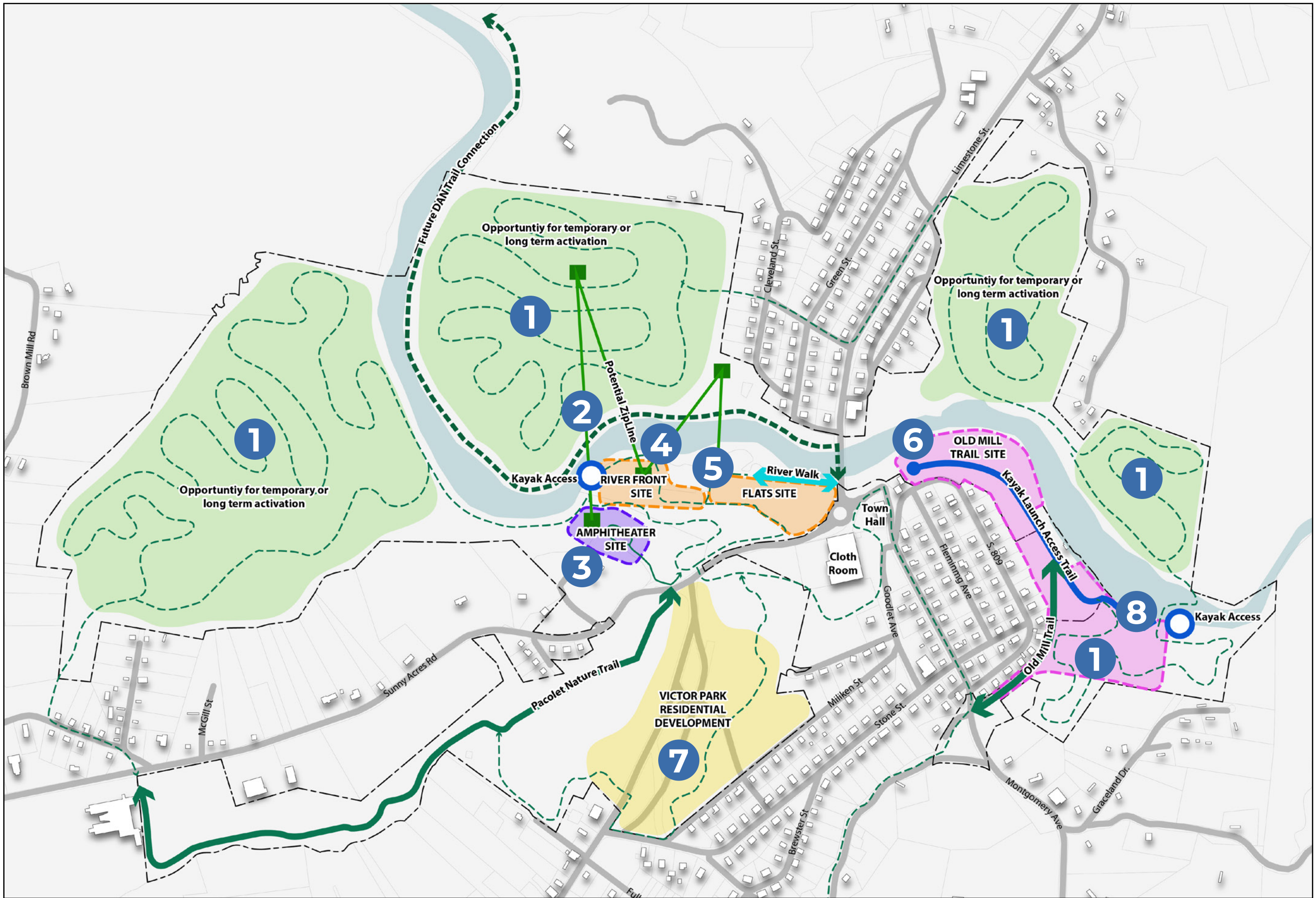


MASTER PLAN

www.PlanPacolet.com



PLAN CONCEPTS



1 Temporary Activation

A number of the sites in the riverfront focus areas have significant development constraints and can be activated as interesting short-term lodging / camping sites and hiking/biking trails.



2 Zip Line Across River

A number of communities across the country have seen the activation of their river through an immersive zip line experience. This could provide recreation, as well as wonderful views.



3 Revitalize Amphitheater

The Amphitheater is a unique historic landmark that could be restored and improved for public use, including the removal / clean up of vegetation that blocks views of the river.



MASTER PLAN
www.PlanPacolet.com

PLAN CONCEPTS

4 Improve Canoe / Kayak Access

The primitive kayak take out point above the Upper Pacolet Shoals Dam could be improved to be more accessible and easier for all potential users. An image is displayed on the Reimagining the Flats display board.



Existing Conditions

5 Activate River

The River front and Flats sites provide ample opportunities for outdoor recreation, including a river walk, green space, playground, and potentially a restaurant on the water. Example images are displayed on the Reimagining the Flats display board.



Example Active Riverfront

6 Improve the Old Mill Trail

The Old Mill Trail can be better maintained and improved with historical markings to detail the ruins of the old mills for visitors and residents alike.



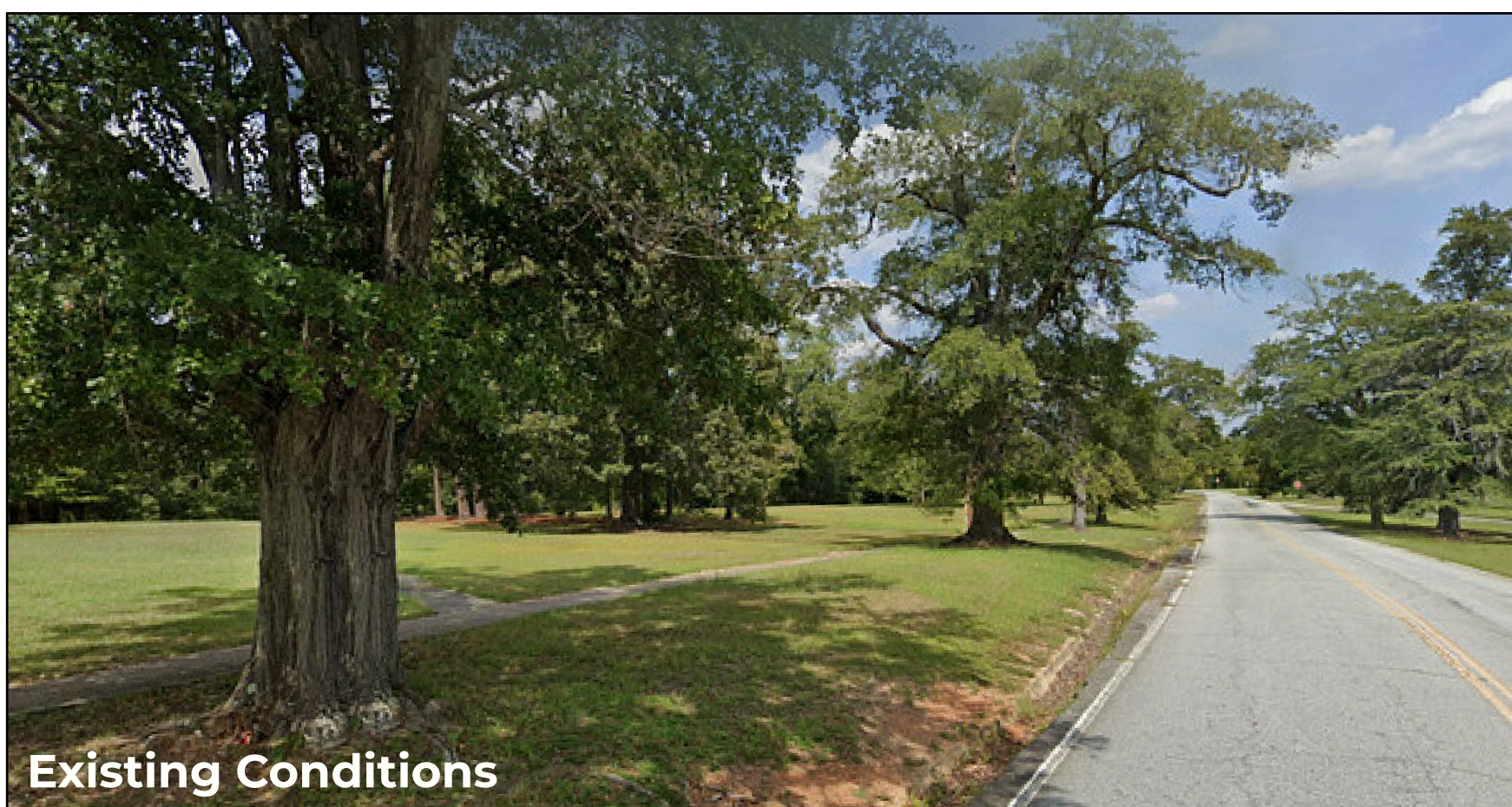
Existing Conditions



Potential Improvements

7 Redevelop Victor Park

Victor Park was once home to many prominent Mill employees. This area could be developed for housing again in the future.



Existing Conditions



Potential Development

8 Improve Canoe / Kayak Put-In

The location to put in a kayak or canoe into the river after the Lower Pacolet Shoals Dam could be more convenient and easier to use. Improved walking and parking access can potentially increase the usability of the existing canoe and kayak put-in area at this location.



Existing Conditions



Existing Conditions

REIMAGINING THE FLATS



1 Improve Canoe / Kayak Access

The current canoe / kayak livery services could be improved. For instance, the current take out access could be enhanced with a more accessible facility. At this location, an opportunity exists to create a public or privately-used building as well.



Existing Conditions



Accessible Take Out Facility

2 Historic Mill Building Footprint Display and Views of the Dam

The historic mill building footprints can provide educational opportunities and vegetation can be cleared to allow views of the Upper Pacolet Shoals Dam.



Historic Building Footprint



Views of the Dam



SCAN ME

MASTER PLAN

www.PlanPacolet.com



REIMAGINING THE FLATS

3 Outdoor Stage and Children's Play Area

An outdoor stage and a children's playground could be built to help activate the Flats area throughout the week.



Outdoor Stage



Example Natural Play Area

4 Establish Retail / Restaurant Opportunities

As a long term goal, several small-scale restaurants or businesses could be established to help further activate the area and capitalize on the river views.



Existing Conditions



Business Development Opportunities

5 Activate the Riverwalk

The wall along the riverfront could be cleaned and cleared of vegetation to create a riverwalk which could be activated with temporary events and uses.



Existing Conditions



Example Temporary Activation

6 Create a Pacolet Green

A major section of the Flats could be used as a large green / lawn, providing flexible open space for a variety of uses and events.



Existing Conditions



Example Green Area

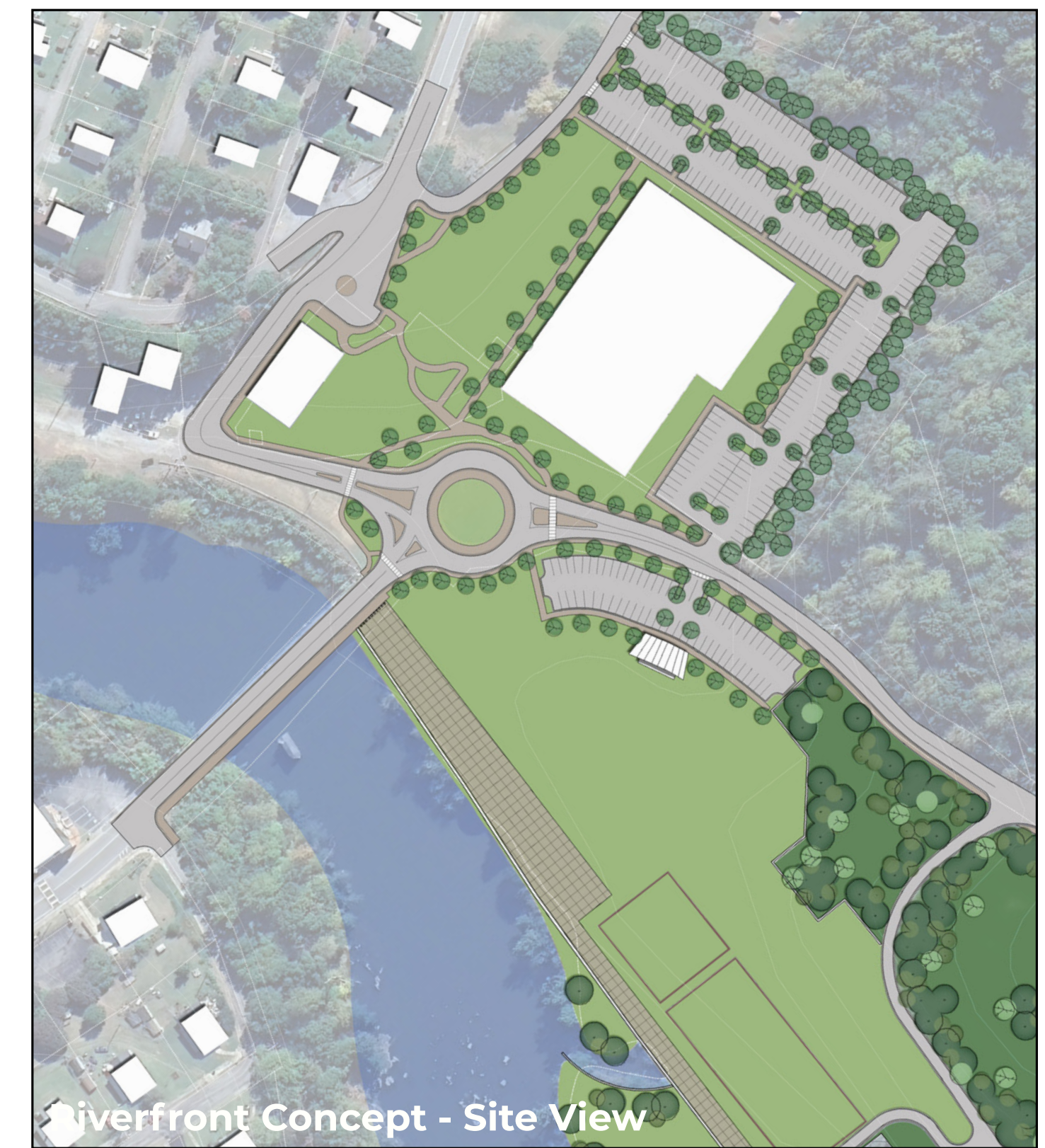
RIVERFRONT CONCEPT



Conceptual Riverfront Activation



Existing Conditions



Riverfront Concept - Site View



SCAN ME

MASTER PLAN

www.PlanPacolet.com



IDEAS & COMMENTS

POST ANY IDEAS
OR COMMENTS
YOU HAVE HERE



MASTER PLAN
www.PlanPacolet.com

