



# Public Kickoff Meeting

OCTOBER 28<sup>TH</sup>, 2024

# Purpose of the Plan

---

- Road map or blueprint for the future of the Town
- Looks at development trends, previously approved plans, demographic and economic data, and community perceptions
- Identifies specific recommendations and a Future Land Use Map that guide future development

# Plan Elements

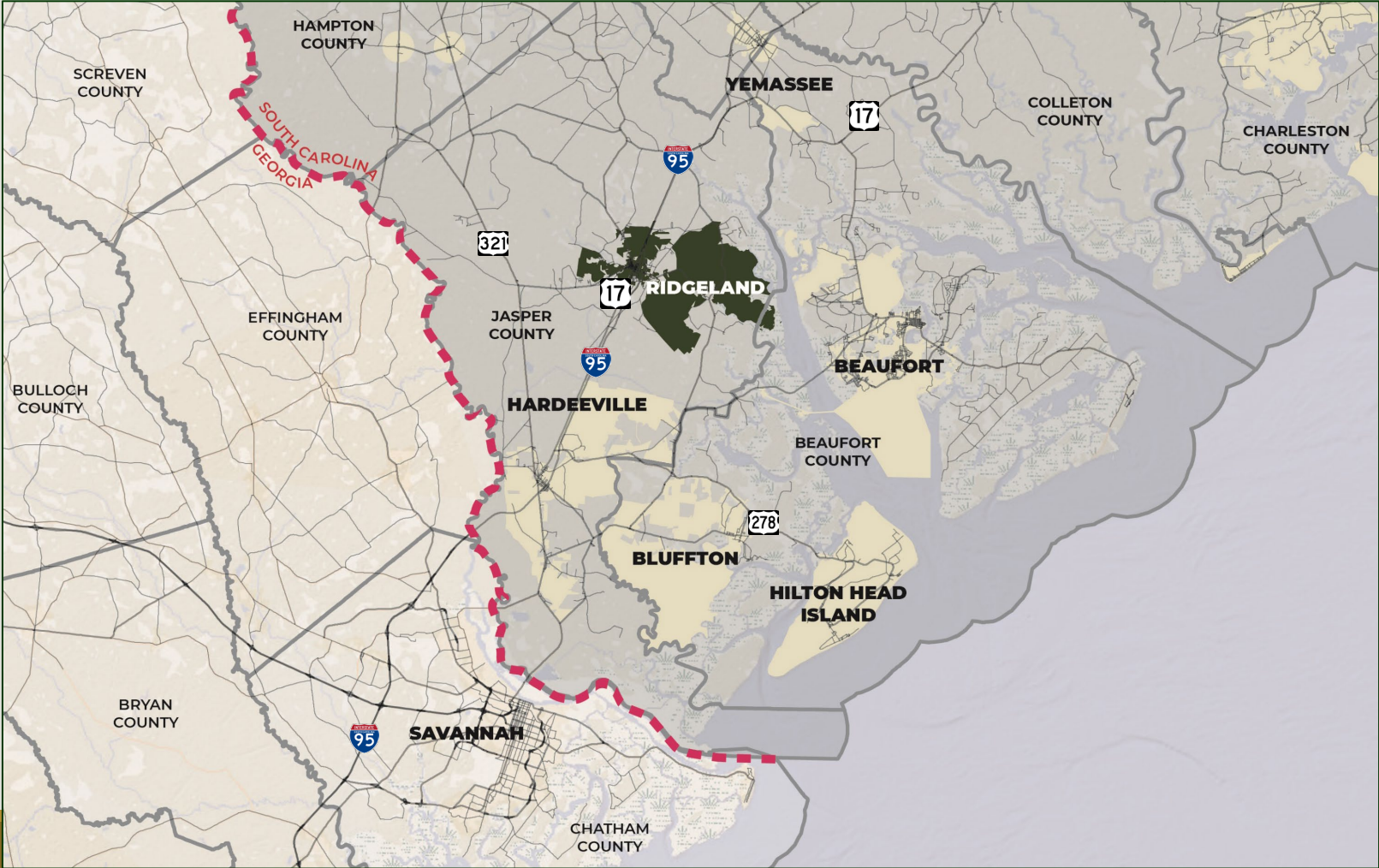
---

The following plan elements are required by the South Carolina

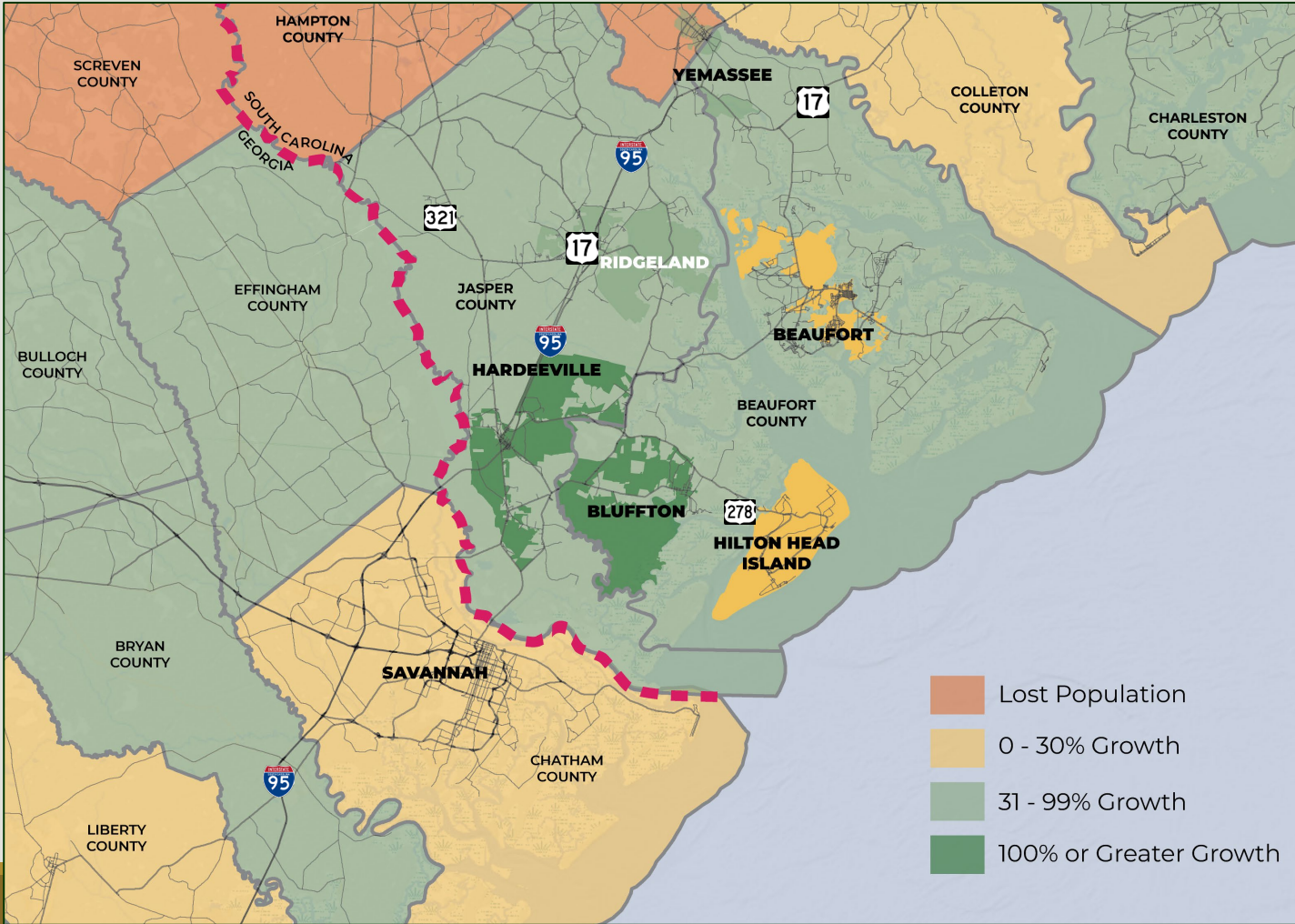
Planning enabling Act:

- Population
- Economic Development
- Natural Resources
- Cultural Resources
- Community Facilities
- Housing
- Land Use
- Transportation
- Priority Investment
- Resiliency

# Regional Context

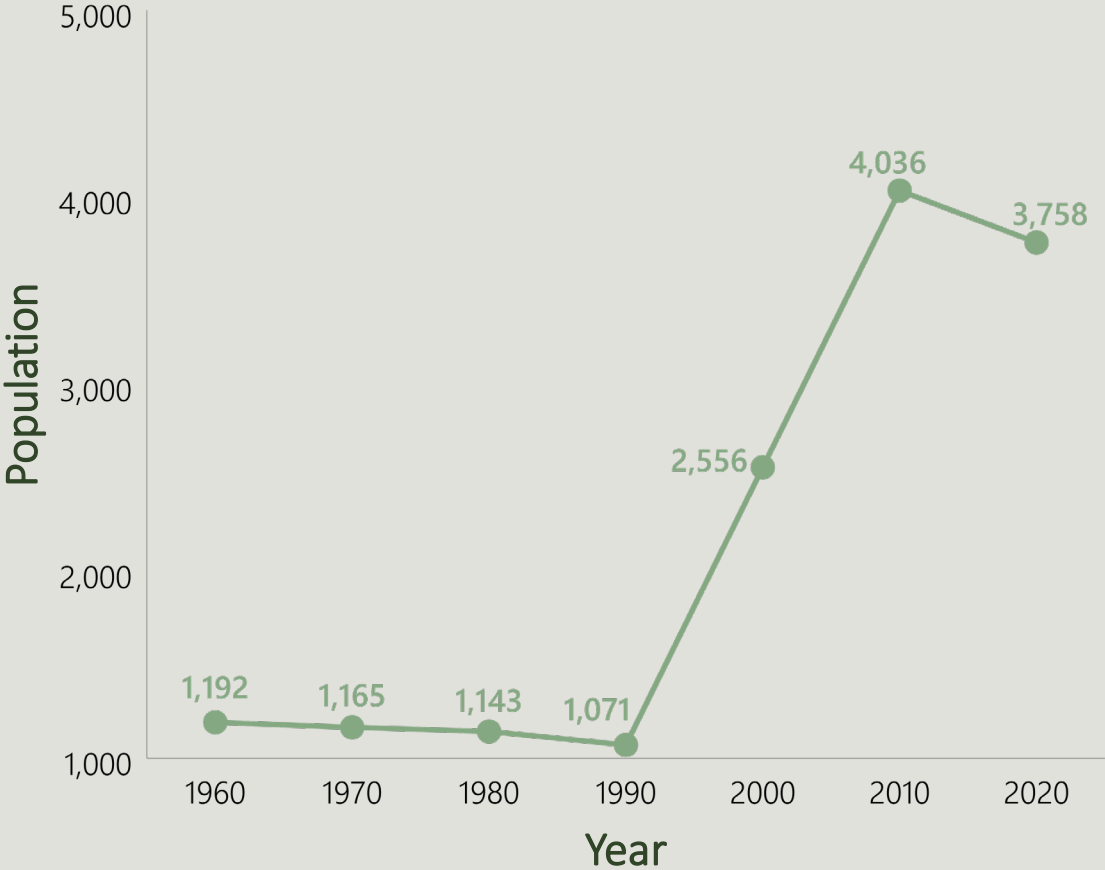


# Regional Population Change (2000 – 2020)



Source: US Census Bureau, Decennial Census

# Ridgeland's Historic Population



**3,737**  
Estimated  
population  
2022

Source: US Census Bureau, Decennial Census



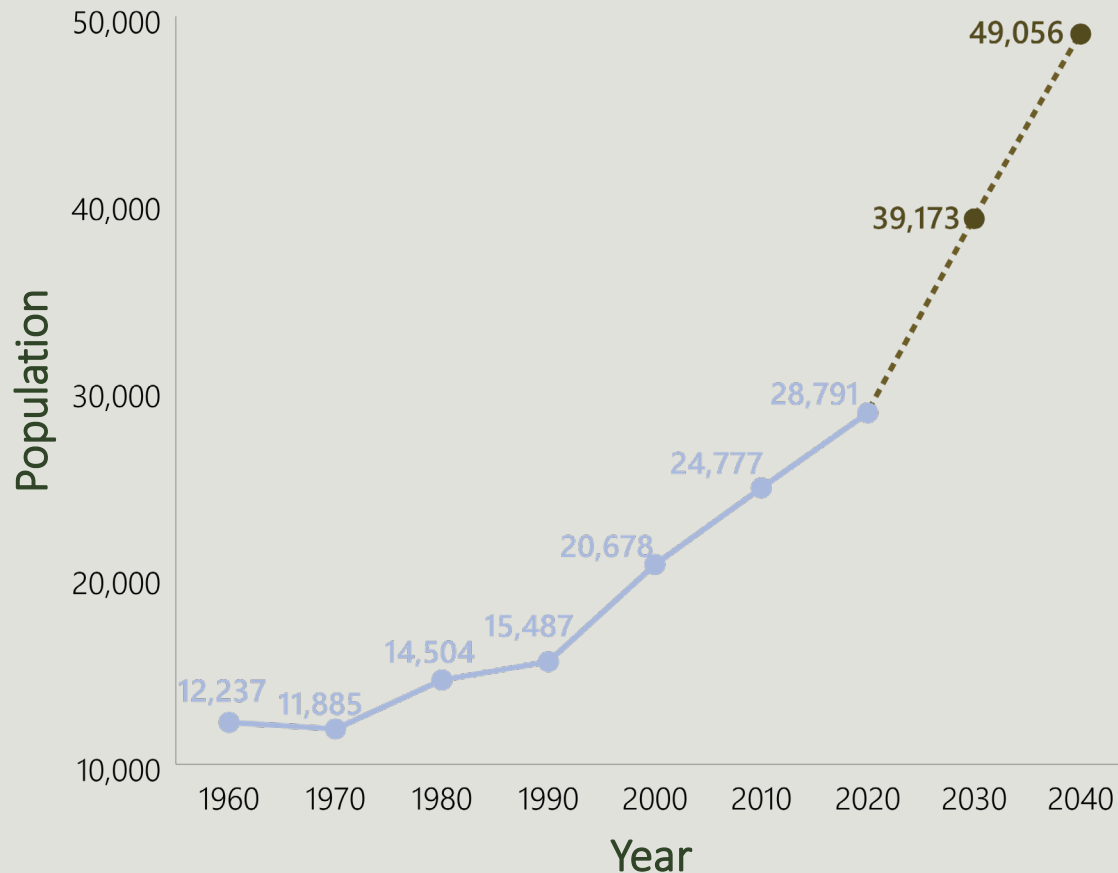
# Regional Populations

---

<b>Geography</b>	<b>2000 Population</b>	<b>2010 Population</b>	<b>2020 Population</b>
Ridgeland	2,556	4,036	3,758
Jasper County	20,678	24,777	28,791
Hardeeville	1,845	2,952	7,473
Beaufort County	120,937	162,233	187,117
South Carolina	4,012,012	4,625,364	5,118,425

*Source: US Census Bureau, Decennial Census*

# Jasper County's Population



29,444

Estimated  
population  
2022

*The State projects the  
County to grow by almost  
20,000 residents by 2040*

Source: Decennial Census and SC Revenue & Fiscal Affairs Office



# Project Website: PlanRidgeland.com



# Take the Community Survey Today!

---



## **Town of Ridgeland Comprehensive Plan - Community Survey**

The Town of Ridgeland is updating its Comprehensive Plan. The Plan will establish a unified vision and goals for the future of the community and we want to hear your ideas about the Town's future. Your participation will help the Planning Commission and Town Council develop a Plan that reflects the needs of the community and a vision for the future. For more information, please visit the project website: **[PlanRidgeland.com](http://PlanRidgeland.com)**.

**Can be found on the project website: [PlanRidgeland.com](http://PlanRidgeland.com)!**