



GROUNDING IN JUSTICE ROOTED IN WELLNESS

20 ENVIRONMENTAL INJUSTICE
24+ HEALTHCARE SUMMIT

A NORTH CAROLINA BLACK ALLIANCE EVENT



GROUNDING IN JUSTICE
ROOTED IN WELLNESS

20 ENVIRONMENTAL INJUSTICE
24+ HEALTHCARE SUMMIT
A NORTH CAROLINA BLACK ALLIANCE EVENT

HISTORY OF ENVIRONMENTAL JUSTICE

1968-Present



"Telling Our Story"
"Building Our Future"

W... County E... AS



GROUNDING IN JUSTICE
ROOTED IN WELLNESS

20 ENVIRONMENTAL INJUSTICE
24+ HEALTHCARE SUMMIT



ENTERTAINMENT

EUGENE TAYLOR

THE DRUM PROPHET



GROUNDING IN JUSTICE
ROOTED IN WELLNESS

20 ENVIRONMENTAL INJUSTICE
24+ HEALTHCARE SUMMIT

Sponsor Welcome

Harrison Wallace
The Equity Fund





GROUNDING IN JUSTICE
ROOTED IN WELLNESS

20 ENVIRONMENTAL INJUSTICE
24+ HEALTHCARE SUMMIT



FEATURED GUEST

The Honorable Floyd McKissick, Jr.

ATTORNEY AND FORMER NORTH CAROLINA SENATOR



GROUNDING IN JUSTICE
ROOTED IN WELLNESS

20 ENVIRONMENTAL INJUSTICE
24+ HEALTHCARE SUMMIT
A NORTH CAROLINA BLACK ALLIANCE EVENT

LISTEN & LEARN

Presented by NCBA Access to Healthcare Team

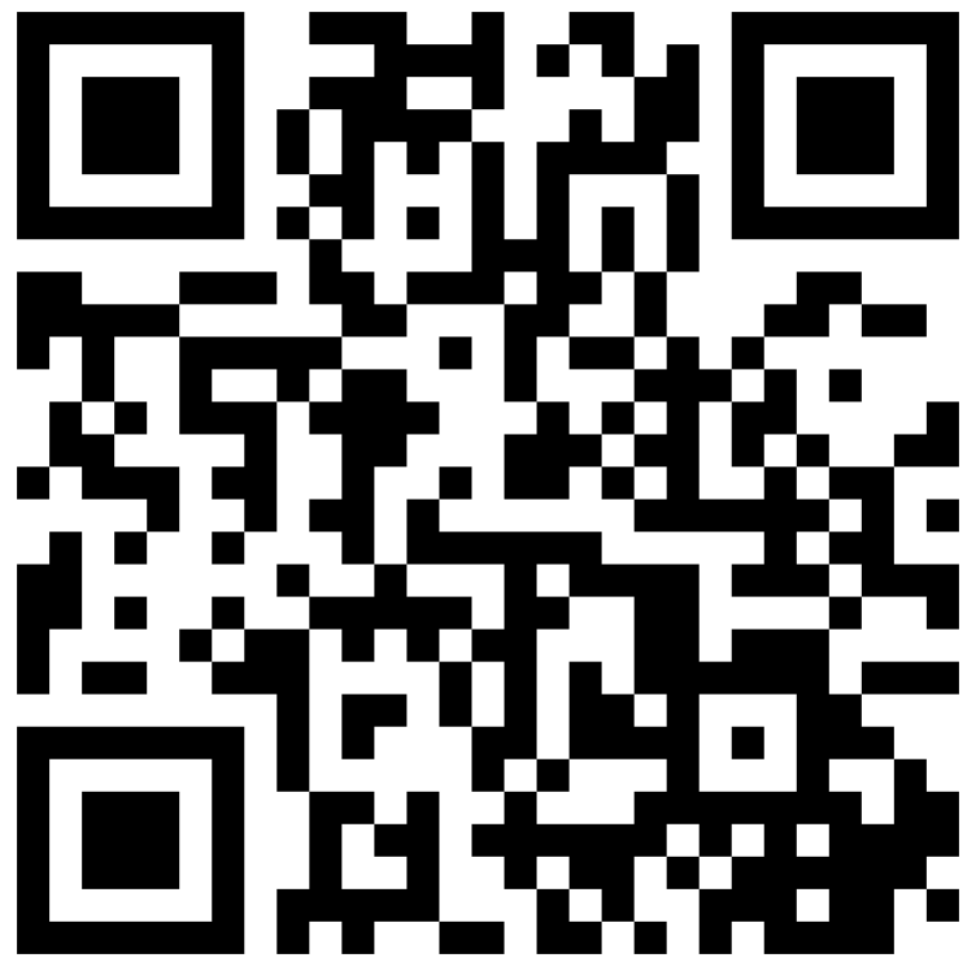


#EJHSummit



Purpose of our Listen + Learn Session

- Deepen your understanding of the intersection of environmental justice and healthcare access.
- Provide an overview of the disparities and policies in environmental justice and healthcare affecting our communities.
- Offer an opportunity for you to think critically about and discuss present-day environmental justice issues impacting communities here Nash County.

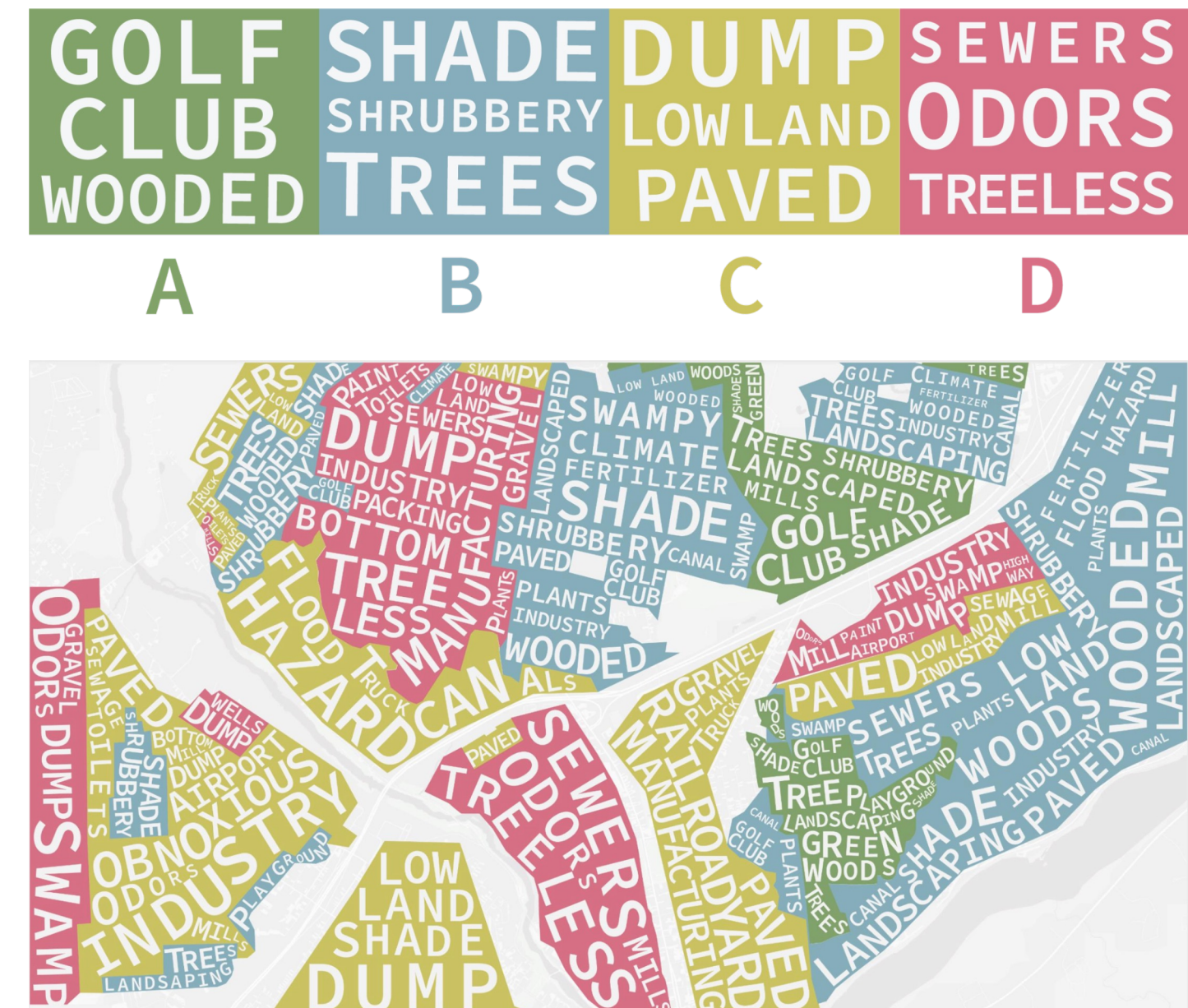


Let's see what
you already
know!

Join at [menti.com](https://www.menti.com) with code
3280 4308 or scan the QR code.

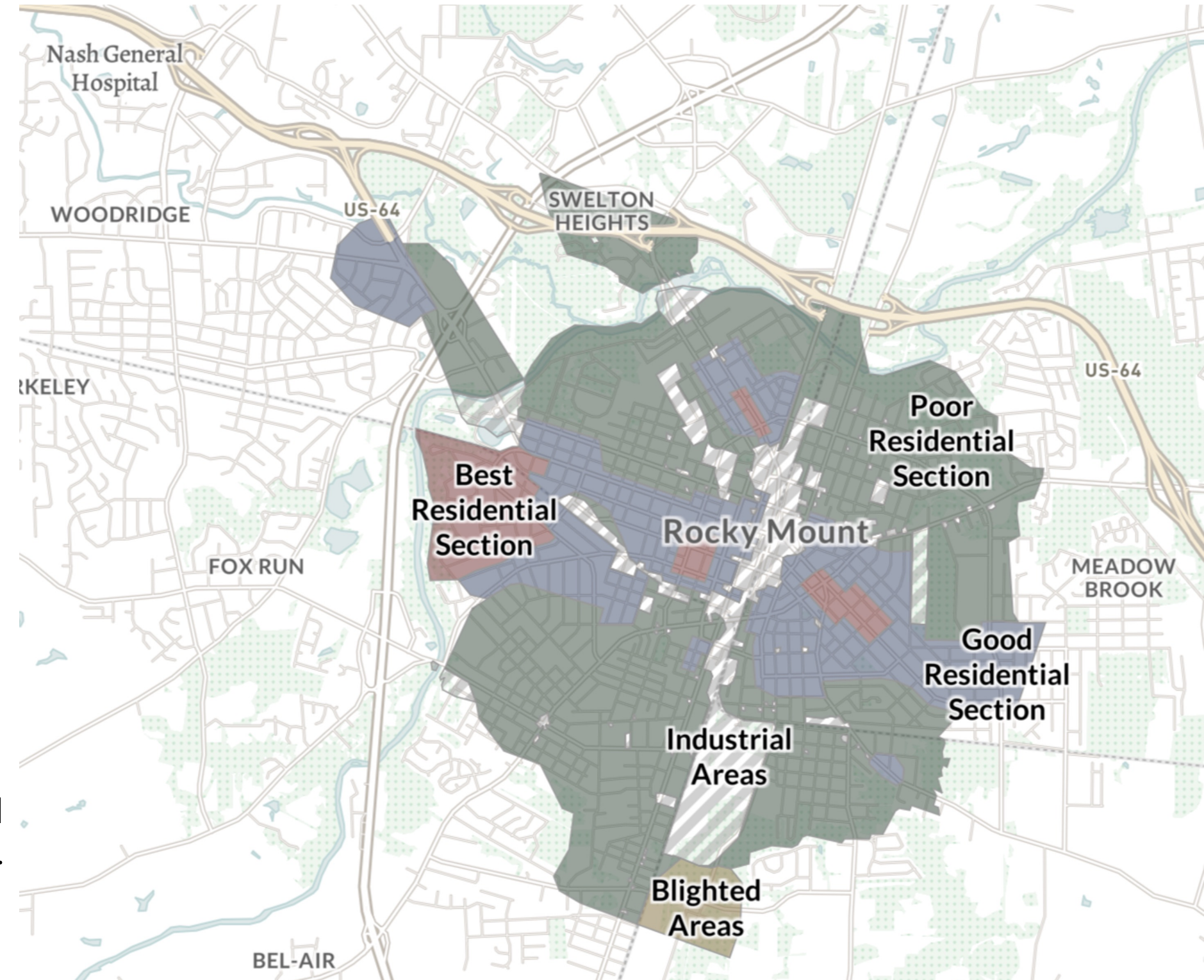
The Lines that Shape our Cities

- Redlining directed both public and private capital to native-born white families and away from Black families.
- The inequalities from the 20th century persist today in the impact on the physical environment of neighborhoods and health outcomes as a result of societal systems.
 - **Physical Environment of Neighborhoods**– The descriptions from the Home Owners' Loan Corporation (HOLC) impact the value of homes, city services, education, crime, and life expectancy of those living in those communities.
 - **Health Outcomes from Societal Systems**– Government and institutional policies, such as redlining, are a driving force behind social and economic resource distribution. This shapes present-day factors in our neighborhoods such as healthcare providers, grocery stores, public transportation, and more.
- From past policies, we see present day place-based social and economic resource distribution. The result is **health and environmental disparities in our communities.**



Interactive Activity How can where you live affect your health?

*Redlined map of Rocky Mount from 1940 made by state or local
HOLC agents or some other entity.



Activity Guiding Questions

1. What environmental challenges are impacting this community?
2. What health outcomes are derived from these environmental challenges?
3. Provide three ways the community can change their environment for the better? Think about solutions that have worked before in North Carolina, or other states. Could they be solutions for this community?
4. What resources does the community need to enact those solutions?
5. What local, state, and/or government officials/agencies could be of assistance?
6. Think deeper beyond the questions we asked you. What are two questions your group has that would help fix your scenario in the real world?

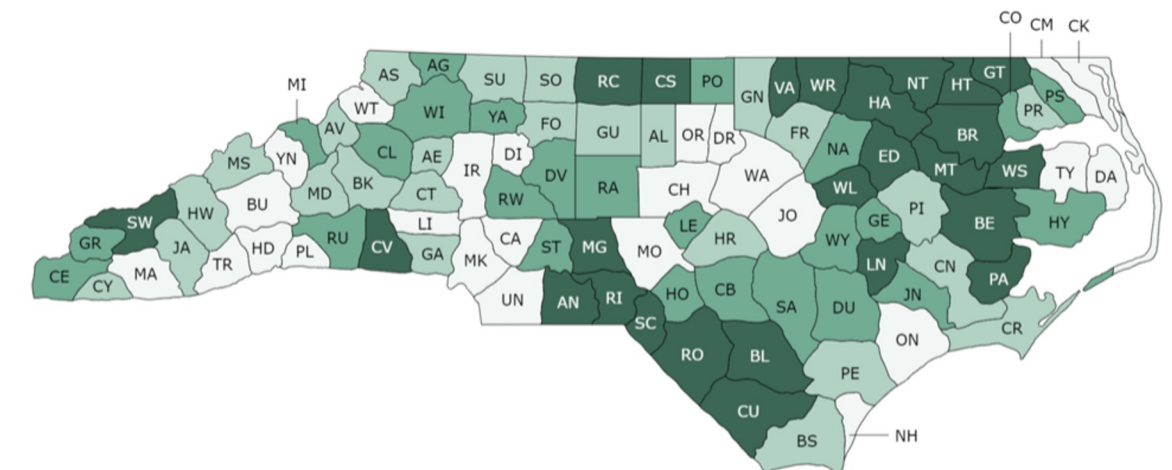


How do Health and Environmental Justice intersect?

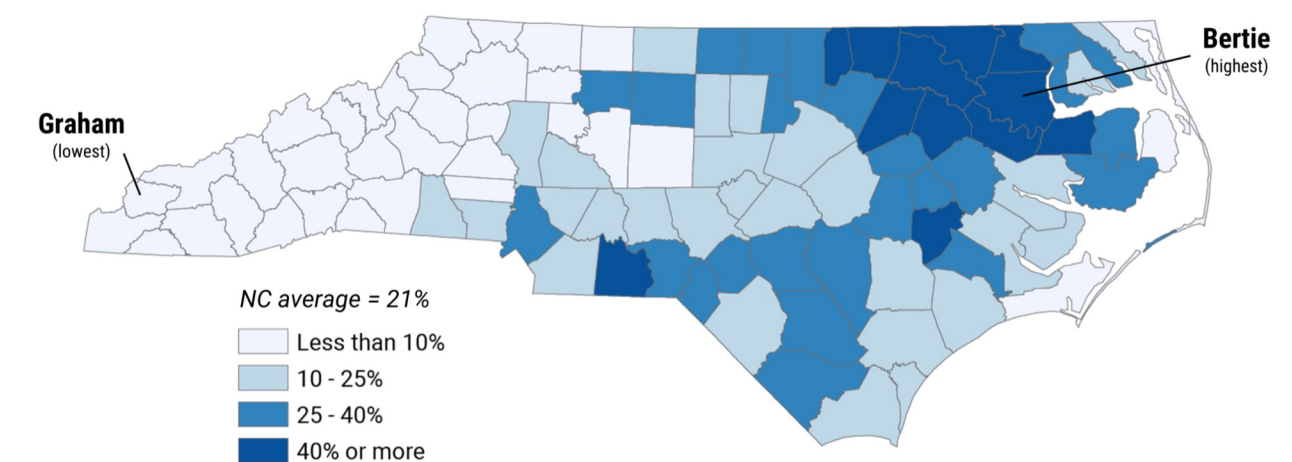
Health Outcomes and Health Factors

- Health factors from our lived environment impact our health outcomes.
 - Zip code is the largest predictor of outcomes in a given area
- Health outcomes reflect the physical and mental well-being of residents in the community that can impact the length and quality of life they experience.
- Health outcomes that result from environmental injustices such as poor air quality and water contamination include:
 - Respiratory infections and triggered asthma attacks
 - Increased visits to the emergency department
 - Incidence of cancers such as lung cancer, kidney cancer, and breast cancer
 - For pregnant and lactating women, they are at risk of greater exposure if their water is contaminated because they drink more water than the average individual.

2022 Health Outcomes – North Carolina



Share of county population that is Black (non-hispanic), 2018

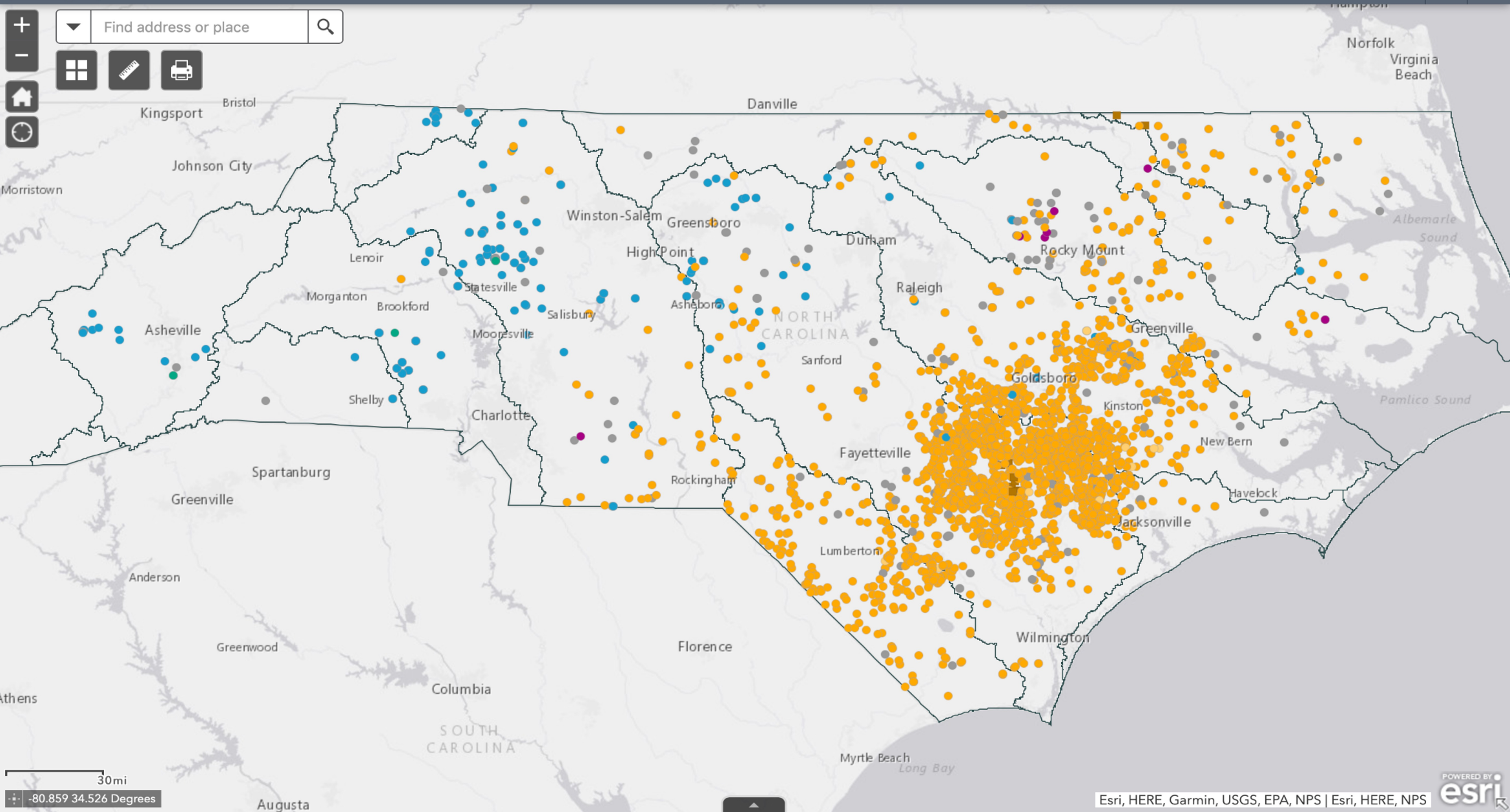


Environmental Justice in North Carolina

- EJ in NC continues to be a fight statewide
 - Air and water contamination still a large issue
 - PFAS, CAFO still affect NC residents
 - Not enough effective legislative solutions being passed
 - Budget challenges, HB600
 - Clean energy limited to communities with resources to afford
 - Infrastructure
 - Timeline from inquiry to implementation
 - Access to healthcare and healthy food
 - Leads to further negative health effects
 - Many food deserts in rural and marginalized areas



Map navigation controls including zoom in (+), zoom out (-), home, and refresh buttons. A search bar contains the text "Find address or place" with a search icon.



30mi

-80.859 34.526 Degrees

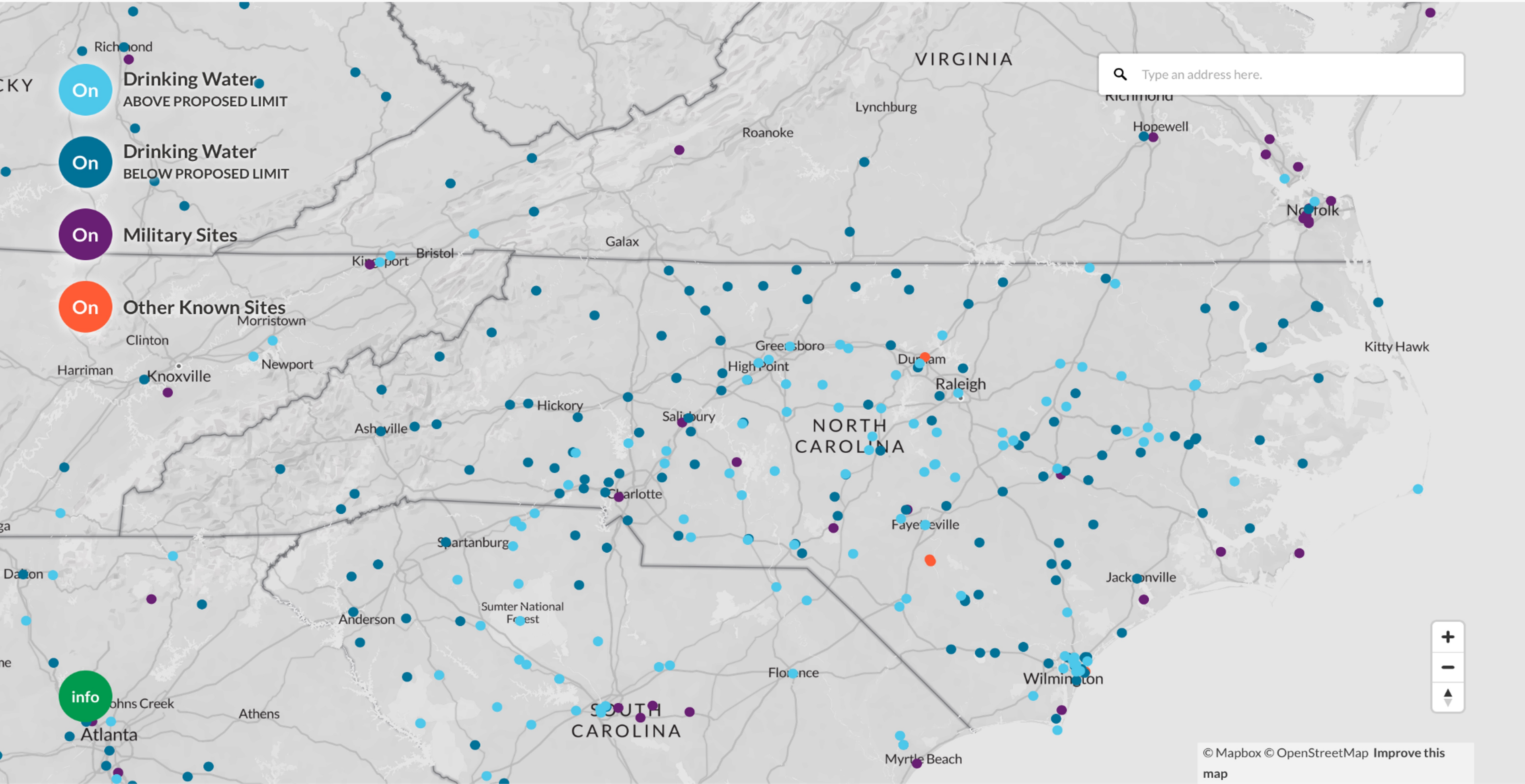
Environmental Justice in North Carolina

- EJ Disparities & Health Outcomes
 - Hog waste consists of a number of chemicals that are hazardous to human health, including ammonia, hydrogen sulfide, carbon monoxide, methane, antibiotic residues and pathogenic bacteria. While it is hard to link any single one of these compounds to a specific disease or health concern, studies have consistently linked the mixture of compounds produced by industrial hog operations to respiratory illness and disease. [Bullers \(2005\)](#); [Cole, Todd and Wing \(2000\)](#); [Wing and Wolf \(2000\)](#)

-<https://ncejn.org/cafos/>
 - Health effects include: lung damage/asthma, infections, apnea, headaches, memory loss



PFAS Contamination in the U.S. (November 28, 2023)



On Drinking Water ABOVE PROPOSED LIMIT

On Drinking Water BELOW PROPOSED LIMIT

On Military Sites

On Other Known Sites

🔍 Type an address here.





PFAS Can Be Found in Many Places

PFAS can be present in our water, soil, air, and food as well as in materials found in our homes or workplaces, including:

- **Drinking water** – in public drinking water systems and private drinking water wells.
- **Soil and water at or near waste sites** – at landfills, disposal sites, and hazardous waste sites such as those that fall under the federal Superfund and Resource Conservation and Recovery Act programs.
- **Fire extinguishing foam** – in aqueous film-forming foams (or AFFFs) used to extinguish flammable liquid-based fires. Such foams are used in training and emergency response events at airports, shipyards, military bases, firefighting training facilities, chemical plants, and refineries.
- **Manufacturing or chemical production facilities that produce or use PFAS** – for example at chrome plating, electronics, and certain textile and paper manufacturers.
- **Food** – for example in fish caught from water contaminated by PFAS and dairy products from livestock exposed to PFAS.
- **Food packaging** – for example in grease-resistant paper, fast food containers/wrappers, microwave popcorn bags, pizza boxes, and candy wrappers.
- **Household products and dust** – for example in stain and water-repellent used on carpets, upholstery, clothing, and other fabrics; cleaning products; non-stick cookware; paints, varnishes, and sealants.
- **Personal care products** – for example in certain shampoo, dental floss, and cosmetics.
- **Biosolids** – for example fertilizer from wastewater treatment plants that is used on agricultural lands can affect ground and surface water and animals that graze on the land.

Environmental Justice in North Carolina

EJ Disparities & Health Outcomes

- PFAS are widely used, long lasting chemicals, components of which break down very slowly over time; many PFAS are found in the water, air, and blood of people and animals all over the world and are present at low levels in a variety of food products and in the environment. There are thousands of PFAS chemicals, and they are found in many different consumer, commercial, and industrial products. This makes it challenging to study and assess the potential human health and environmental risks.
- “... *altered immune and thyroid function, liver disease, lipid and insulin dysregulation, kidney disease, adverse reproductive and developmental outcomes, and cancer.*” -Fenton et al

Our State of Health: Accessibility, Affordability, and Availability

- North Carolina expanded access to Medicaid under the Affordable Care Act on Dec. 1, 2023
 - Provides affordable, low-cost health insurance to over 600,000 North Carolinians.
 - Black and Brown communities represent more than half of the uninsured population in North Carolina.
 - Expansion relieves pressure on rural hospitals by reducing the amount of uncompensated care rural hospitals provide to the uninsured.
- A Case Study of Nash County
 - Out of the 6 towns each group looked at today during our breakout sessions, only 3 towns had access to providers that can address health challenges brought on by their physical environment.
 - For those lacking access, they had to drive anywhere from 25–45 minutes outside of their town, sometimes outside their county, to access the nearest provider.
 - This can be challenging if you have limited access to transportation or have to decide between missing work due to the distance of the drive or going to the doctor's office.
 - On the contrary, even when accessibility and availability are not challenges, not all providers accept all of the Prepaid Health Plans (Medicaid), which can impact access to specialty care providers.
- Medicaid Expansion is only scratching the surface. It's not enough to *just* have health coverage, but your insurance should make accessing care affordable for the issues you're experiencing, such as asthma flare ups, cancer, or cardiovascular issues, resulting from environmental injustices.

How can we better
understand and talk about
EJ and Healthcare
statewide?

EJScreen Tool

- The Environmental Protection Agency (EPA), developed a new environmental justice mapping and screening tool called EJScreen. With this tool, users are able to access environmental and demographic information and compare the results of their community with the rest of the state and nation.
- It is helpful with:
 - Identifying areas with low-income and communities of color;
 - Potential environmental quality issues;
 - Combining environmental and demographic indicators;
 - Displaying health and climate indicators.

[Click Screen to Play](#)



Questions?



GROUNDING IN JUSTICE
ROOTED IN WELLNESS

20 ENVIRONMENTAL INJUSTICE
24+ HEALTHCARE SUMMIT
A NORTH CAROLINA BLACK ALLIANCE EVENT

HISTORY OF ENVIRONMENTAL JUSTICE

1968-Present



"Telling Our Story"
"Building Our Future"

Waynes County, NC



GROUNDING IN JUSTICE
ROOTED IN WELLNESS

2024 ENVIRONMENTAL INJUSTICE
HEALTHCARE SUMMIT
A NORTH CAROLINA BLACK ALLIANCE EVENT

THANK YOU SPONSORS

THE Climate +
Clean Energy
**EQUITY
FUND**

North Carolina League of
CONSERVATION VOTERS
FOUNDATION



#EJHSummit



GROUNDING IN JUSTICE
ROOTED IN WELLNESS

20 ENVIRONMENTAL INJUSTICE
24+ HEALTHCARE SUMMIT
A NORTH CAROLINA BLACK ALLIANCE EVENT

COMMUNITY + FAITH PANEL

Grounded in Grassroots Organizing: The Role of
Community and Faith Leaders in Addressing

Environmental and Healthcare Disparities



#EJHSummit



GROUNDING IN JUSTICE
ROOTED IN WELLNESS

20 ENVIRONMENTAL INJUSTICE
24+ HEALTHCARE SUMMIT
A NORTH CAROLINA BLACK ALLIANCE EVENT

HISTORY OF ENVIRONMENTAL JUSTICE

1968-Present



"Telling Our Story"
"Building Our Future"

Watauga County, NC



GROUNDING IN JUSTICE
ROOTED IN WELLNESS

20 ENVIRONMENTAL INJUSTICE
24+ HEALTHCARE SUMMIT



2024 KEYNOTE SPEAKER

SURABHI SHAH

SENIOR ADVISOR FOR CUMULATIVE IMPACTS, U.S. EPA



GROUNDING IN JUSTICE
ROOTED IN WELLNESS

20 ENVIRONMENTAL INJUSTICE
24+ HEALTHCARE SUMMIT
A NORTH CAROLINA BLACK ALLIANCE EVENT

HBCU AWARD



NC Central
UNIVERSITY



#EJHSummit



GROUNDING IN JUSTICE
ROOTED IN WELLNESS

20 ENVIRONMENTAL INJUSTICE
24+ HEALTHCARE SUMMIT
A NORTH CAROLINA BLACK ALLIANCE EVENT

POLICY PANEL

Rooted in Revolution: The Pathway Towards Equitable
Environmental and Healthcare Policy



#EJHSummit



GROUNDING IN JUSTICE
ROOTED IN WELLNESS

2024 ENVIRONMENTAL INJUSTICE
HEALTHCARE SUMMIT
A NORTH CAROLINA BLACK ALLIANCE EVENT

THANK YOU SPONSORS

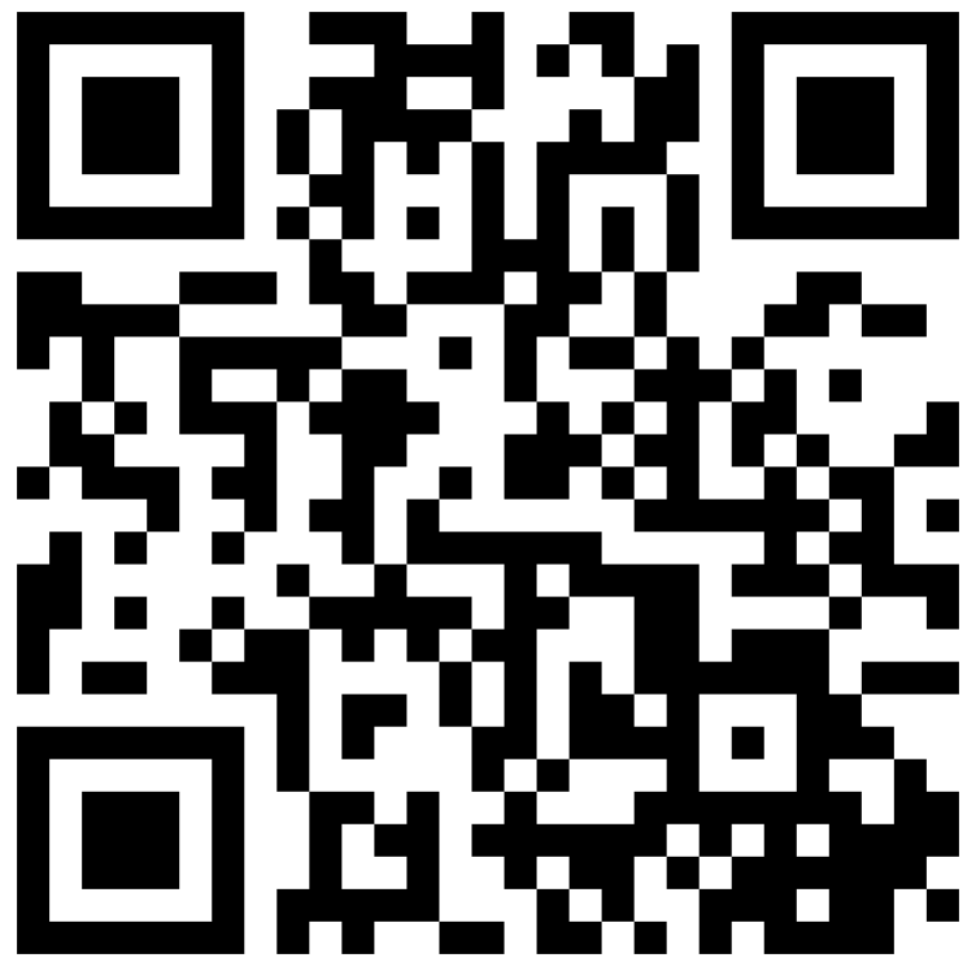
THE Climate +
Clean Energy
**EQUITY
FUND**



North Carolina League of
CONSERVATION VOTERS
FOUNDATION



#EJHSummit



Let's do a quick recap!

Join at **menti.com** with code
3291 5870 or scan the QR code.

2024 NC BLACK SUMMIT

“IGNITING PROGRESS, DEMANDING EQUITY”



April 25-26, 2024

Raleigh Convention Center



LEGACY ■ UNITY ■ ADVOCACY

DIVINE 9

NC LEGISLATIVE DAY

Save the Date
WEDNESDAY,
05.08.24



More information to follow. For questions, email ncdivinenine@gmail.com.