

What Happens When You Think Outside the Box: Partnerships for Learning

Minnesota Partners in Public Health
Conference

November 15, 2024



**Public
Health**
CORPS



AmeriCorps



Ampact



Renee Frauendienst,
BSN, PHN, RN, CIP

Public Health
Consultant
ServeMN



Bonnie Brueshoff,
DNP, RN, PHN

Public Health
Consultant
ServeMN



Stephany Medina,
MPH

Infrastructure Program
Manager
Carlton-Cook-Lake-St.
Louis Community
Health Board



Sarah "Sevcik"
Tummala,
MPH, M.Ed.

Curriculum Developer
& Trainer
University of Minnesota

Minnesota Public Health Corps

MN Public Health Corps (MNPHC) is an AmeriCorps program that trains passionate people to serve as Public Health Project Coordinators at public health agencies across Minnesota.



The Power of Partnerships



The state commission for AmeriCorps programs in Minnesota



Team of public health experts and education providers. Responsible for designing and implementing Public Health Corps member training.



Nonprofit organization which implements ServeMinnesota's strategic AmeriCorps initiatives, including Public Health Corps



Advises Public Health Corps program design and operations

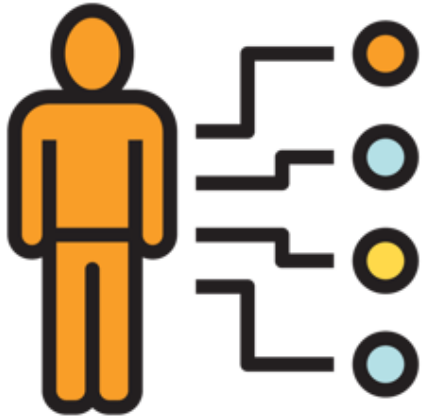


Advises Public Health Corps program design and operations. Key partner in serving local host sites



MNPHC Project Coordinators increase site capacity

MNPHC
Project
Coordinators



Develop and execute service plans tailored to partner site needs, enhancing capacity across key public health domains

Engage in continuous, individualized career exploration and receive tailored support

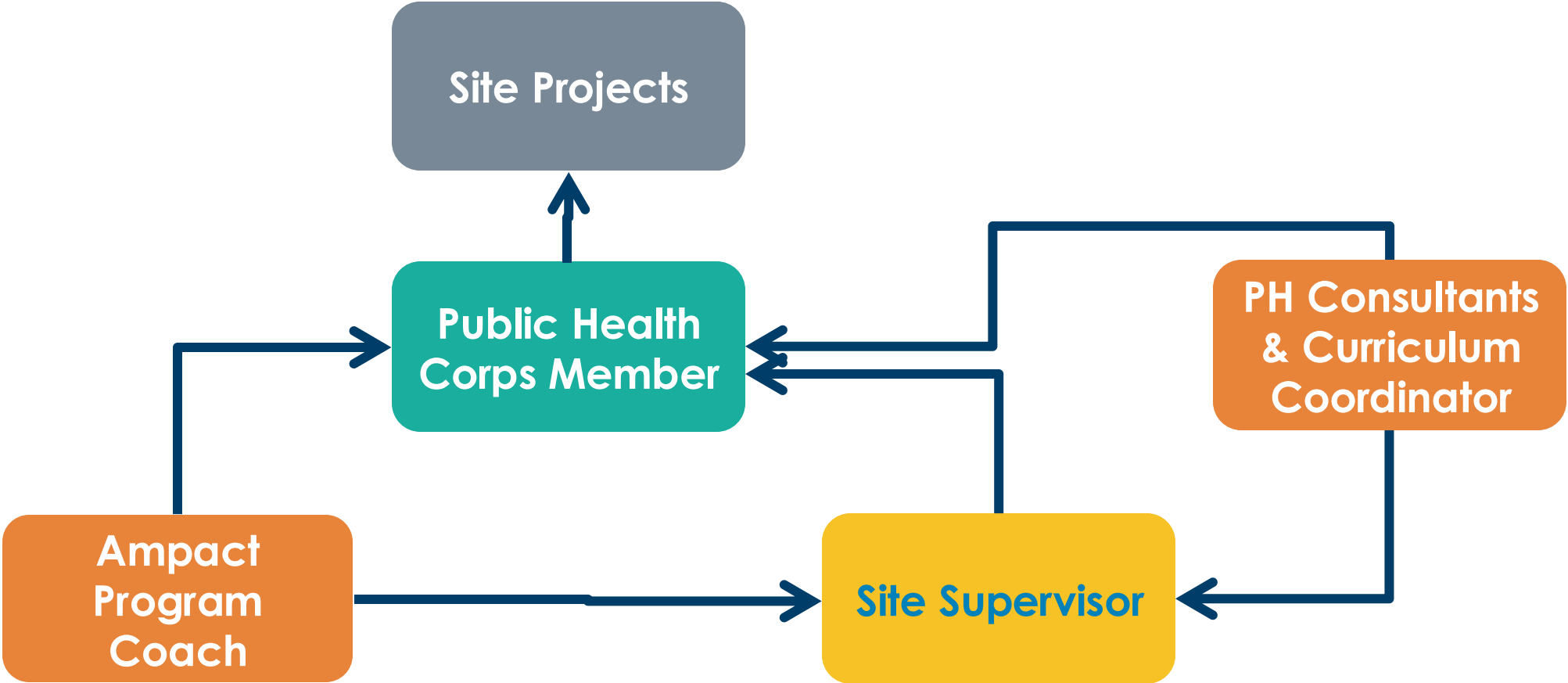


Immediately: Contribute to the capacity increases through project completion, leading to partner organizations being better positioned to serve their communities



Long term: Increase the size and diversity of the public-health workforce

Member Support



Member Training

Modality

- Online training
- Live virtual training
- Member meetups
- Weekly check-ins with Program Coach during first 4 weeks.

(Some) Topics

- Health Equity
- Health Communication
- Project management
- Community Engagement
- Systems Approaches to Healthy Communities
- Assessing Community Health

Demonstration – Asynchronous modules

Features of modules

Multimedia: audio, video, embed, attachments

Interactive: accordion, tabs, labeled graphic, process, sorting, flashcard grids or stacks, timeline, buttons, scenarios

Knowledge checks: multiple choice, multiple response, matching

Other features: quotes, lists, relevant photo selection, tables, charts

Modules for demonstration

Public Health System

Health Communication

Introduction to Public Health

So why Public Health Corps?



**Public
Health**
CORPS



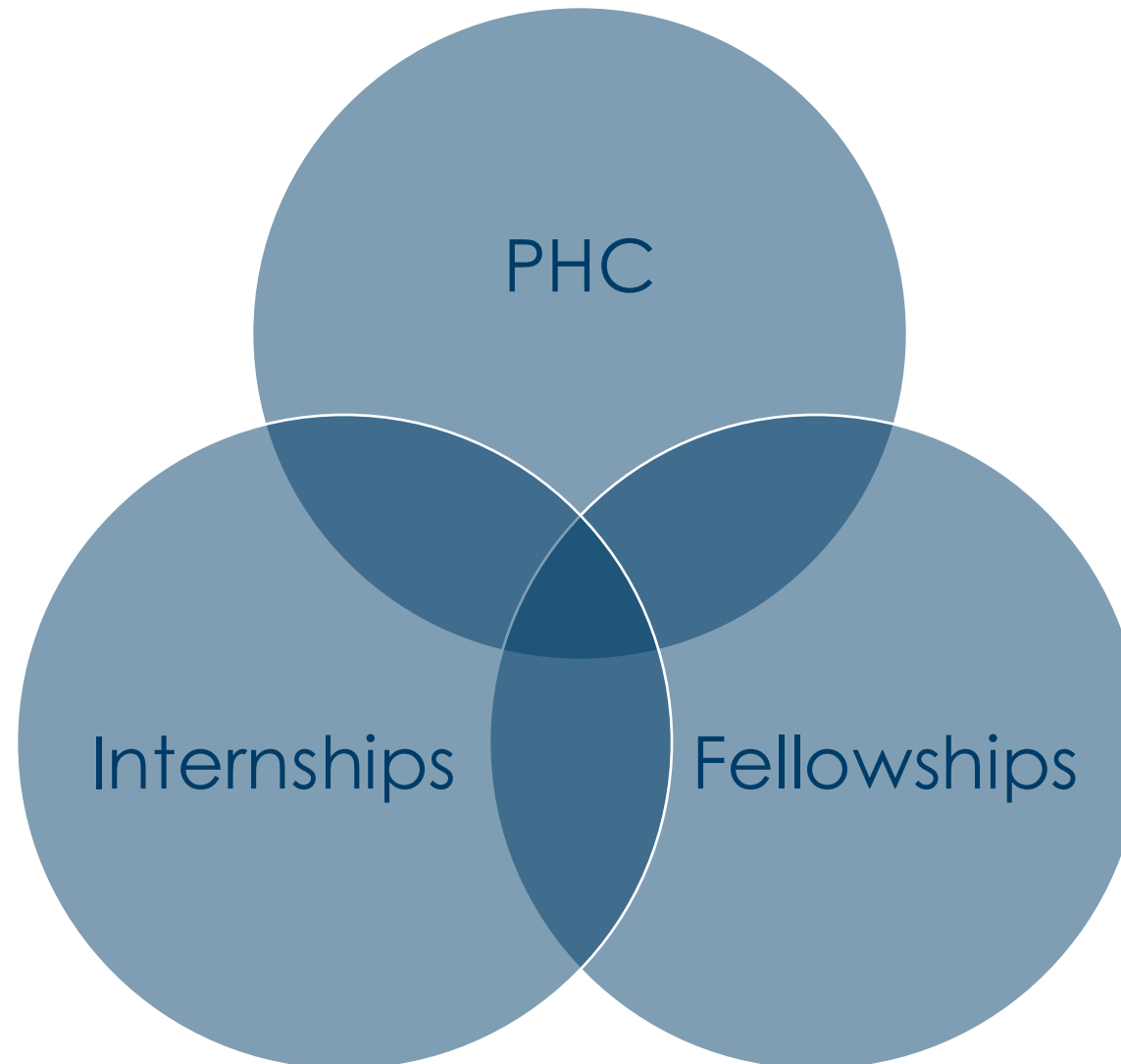
AmeriCorps



Ampact

Stephany's work at the Carlton-Cook-Lake-St. Louis Community Health Board is supported by an MDH Infrastructure Grant.

What makes PHC different?



PHC Projects at Our Site

- Established a blog related to the Foundational Public Health Responsibilities (FPHR) framework
- Implementing a research project assessing public health's role in addressing housing insecurity
- Assisting with data collection and analysis
- Enhancing capacity for communications related work (e.g., social media support)
- Vetting trainings

Implementing the PHC training modules

Winter
2022-23

Spring
2023

Fall
2023

Winter
2023-24

Spring
2024

Summer
2024

Our Community Health Board Completed a Workforce Development Assessment.

The first draft of our workforce development plan was released for feedback, and then finalized.

Our public health corps member helped with the training vetting process and leadership chose the Ampact modules.

My team did listening sessions with LPH staff to present the assessment findings and ask clarifying questions about what should be included in the workforce development plan.

Workforce development plan implementation begins. To avoid re-creating the wheel, we searched for existing public health trainings.

A standard operating procedure was developed and rolled out across the region.

Feedback so far...

- Aligned with what undergrad and graduate programs are teaching about public health.
 - Would be helpful to someone new to public health who didn't have this training, or if time has passed since your academic experience.
- The public health systems module was unique to Minnesota.
- Has been recommended after 1+ month on the job, as to gain context before diving in.

Facilitated
discussion
Bonnie Brueshoff and
Renee Frauendienst,
Public Health
Consultants



**Public
Health**
CORPS



AmeriCorps



Ampact

Community-specific Services



PH Foundational Responsibilities

Assessment & Surveillance	Community Partnership Development	Equity	Organizational Competencies
Policy Development & Support	Accountability & Performance Management	Emergency Preparedness & Response	Communications

E Q U I T Y

What now?

If you currently have a PHC member:

- Discuss their thoughts on the modules.
- Talk with your leadership about your current onboarding process.
- Review the sample operating procedure and consider implementing at your agency with the support of your PHC member.

If you do not have a PHC member:

- Talk with your leadership team about projects that a PHC member could support.
- Consider how a PHC member could support the implementation of a project like this.
- Reach out to Bonnie or Renee to learn more about the benefits of PHC.

To request access to the training modules, use the QR code or go to

https://z.umn.edu/mnphc_modules



Thank you!

Chelsey Kirkland, PhD, MPH, CHW
Point of Contact (POC) for training access
ckirk@umn.edu
612-625-0908

Stephany Medina
POC for questions for a host site
MedinaS@communityhealthboard.org

Bonnie Brueshoff
POC for interest in a PHC member
bonnie.brueshoff@gmail.com
952-381-7485

Renee Frauendienst
POC for interest in a PHC member
rsfrauendienst@gmail.com
320-282-6598

