

Monitoring Macroplastic, in and from, EU Rivers (MoMaRi)

Roberto Crosti (ISPRA)

Water & Land Expert Team

IMPEL Open Day - 29 January 2025



Funded by the
European Union

**Rivers are the main vectors of plastic inputs into the sea;
Need to harmonise monitoring protocols and training in order
to assess effectiveness of reduction measures and impact on the biota**



WP1

- 1) Capacity building for environmental agencies
- 2) Shared guidelines and protocol

WP2

- 1) Risk of exposure with biota once at sea - WP2 (with data of previous IMPEL MMT project)



Legal EU framework:

Directive 2008/56/EC of the European Parliament and of the Council of 17 June 2008 establishing a framework for community action in the field of marine environmental policy (Marine Strategy Framework Directive)

Directive 2000/60/EC of the European Parliament and of the Council of 23 October 2000 establishing a framework for Community action in the field of water policy

Directive 2008/98/EC of the European Parliament and of the Council of 19 November 2008 on waste and repealing certain Directives (Text with EEA relevance)

Directive (EU) 2018/851 of the European Parliament and of the Council of 30 May 2018 amending Directive 2008/98/EC on waste (Text with EEA relevance)

Council Directive 92/43/EEC of 21 May 1992 on the conservation of natural habitats and of wild fauna and flora

Directive 2009/147/EC of the European Parliament and of the Council of 30 November 2009 on the conservation of wild birds





JRC TECHNICAL REPORTS

A Joint List of Litter Categories for Marine Macrolitter Monitoring

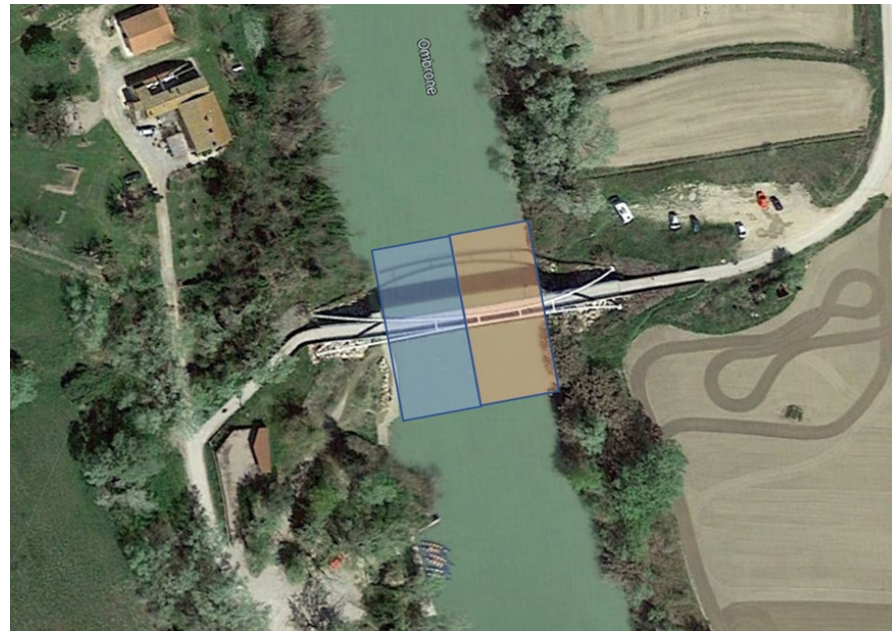
Manual for the application of the classification system

Fleet, D., Vlachogianni, T., Hanke, G.
MSFD Technical Group on Marine Litter

2021



EUR 30348 EN

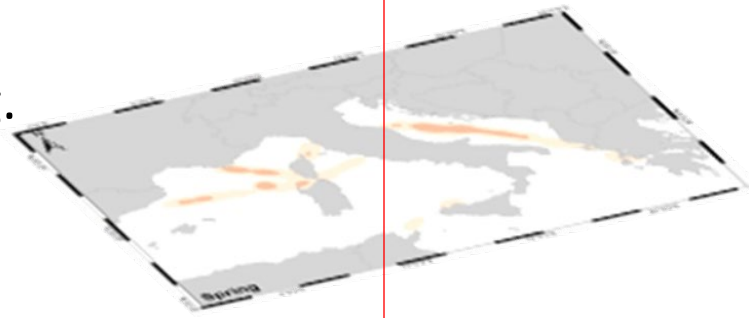


IMPEL Open Day 2025 - Water & Land

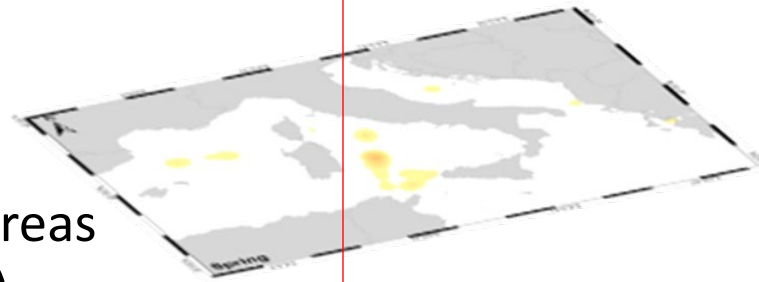
Data set from MTT previous IMPEL project 2020-2024



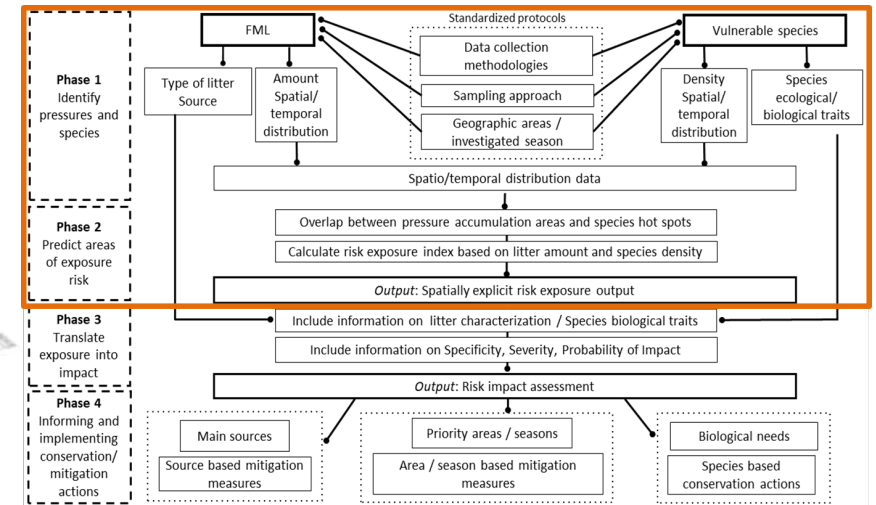
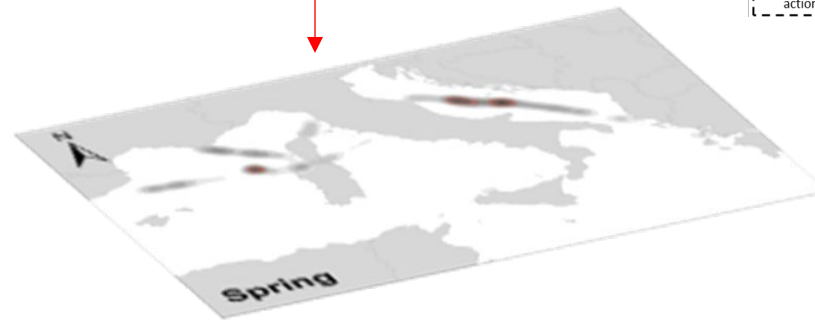
Distribution of the species e.g. density, SPUE, range)



Areas of higher concentration of the pressure (e.g. amount per cell, 'hot spot' areas through Kernel density estimator)



Index of risk exposure



Initial Dream team

4.1 Lead

Roberto Crosti, ISPRA, Italy

4.2 Project team

Please note that according to IMPEL Rules 'Every project needs active participants from a minimum of nine IMPEL members confirming their support and physical or virtual active participation at least in its general project activities, before the project may start.'

Stuart Gunput, Omgevingsdienst, (NL)

Pedro Sepulveda Direção Regional do Ambiente e Alterações Climáticas (PL)

4.3 Other IMPEL participants

Caroline Waaijer, Ariana Marchena: Omgevingsdienst (NL);

Claudia Nobrega, Nicola Pestana: Direção Regional do Ambiente e Alterações Climáticas (PL);

Antonella Arcangeli, Elena Santini: ISPRA (IT)

Liliana Gonçalves Guiomar: APAMBIENTE (PT);

Rozana Bineri, Vanela Prifti: Agjencia Kombetare e Mjedisit (AL)

Paul Vriend, RWS WVL: Rijkswaterstaat (NL)

Armend Agushi, Arton Ramadani, Elbasan Shala, Kosovo Environmental Protection Agency (RKS)

Gita Strode, Catura Conservation Agency (Latvia)

MASE (Italian Environment Ministry) To be confirmed _IT

Experts from Nature Protection ET (TBD)

4.4 Other non-IMPEL participants

Georg Hanke, JRC, ISPRA-Italy

Monica Radu Geological Institute of Romania (RO);

Prof. Dr. Elda Marku Head of Chemistry Department, Faculty of Natural Sciences, Tirana University

Nazaré Couto CENSE – Center for Environmental and Sustainability Research

Erol Cavus UN Environment/Mediterranean Action Plan

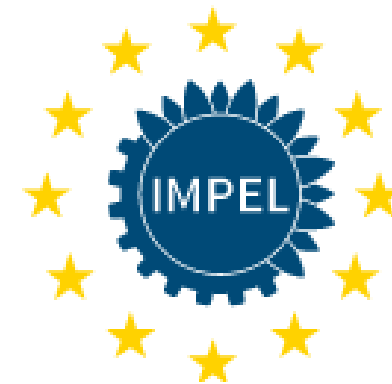
Inta Dimante-Deimantovica Latvijas Hidroellogijas instituts- LHEI

IMPEL Network

2025-27(V) WG5 Monitoring Macroplastic in EU Rivers (MoMaRi)

Water & Land project - Aim of this project is: to tackle plastic pollution in rivers by delivering guidelines for monitoring macroplastic and a booklet on the harm caused by plastic litter to protected marine umbrella species, focusing on exposure risk.





Contact information:

- ✓ **For joining this project:** If you work for an IMPEL member organisation and would like to join the project or receive further information, **please contact the National Coordinator of your country and the Project Manager at roberto.crosti@isprambiente.it**
- ✓ **For becoming a member of IMPEL:** If you are from an Environmental Authority or association of authorities that is based in a member state of the EU, a candidate country or another country applying Community law and would be interested in becoming a member of IMPEL, **please contact IMPEL Secretariat at info@impel.eu** for more information.
- ✓ **For all other interested parties:** please check out our new website for further information! **www.impel.eu**



Funded by the
European Union