

Self Monitoring In Water Permits (SMWP)

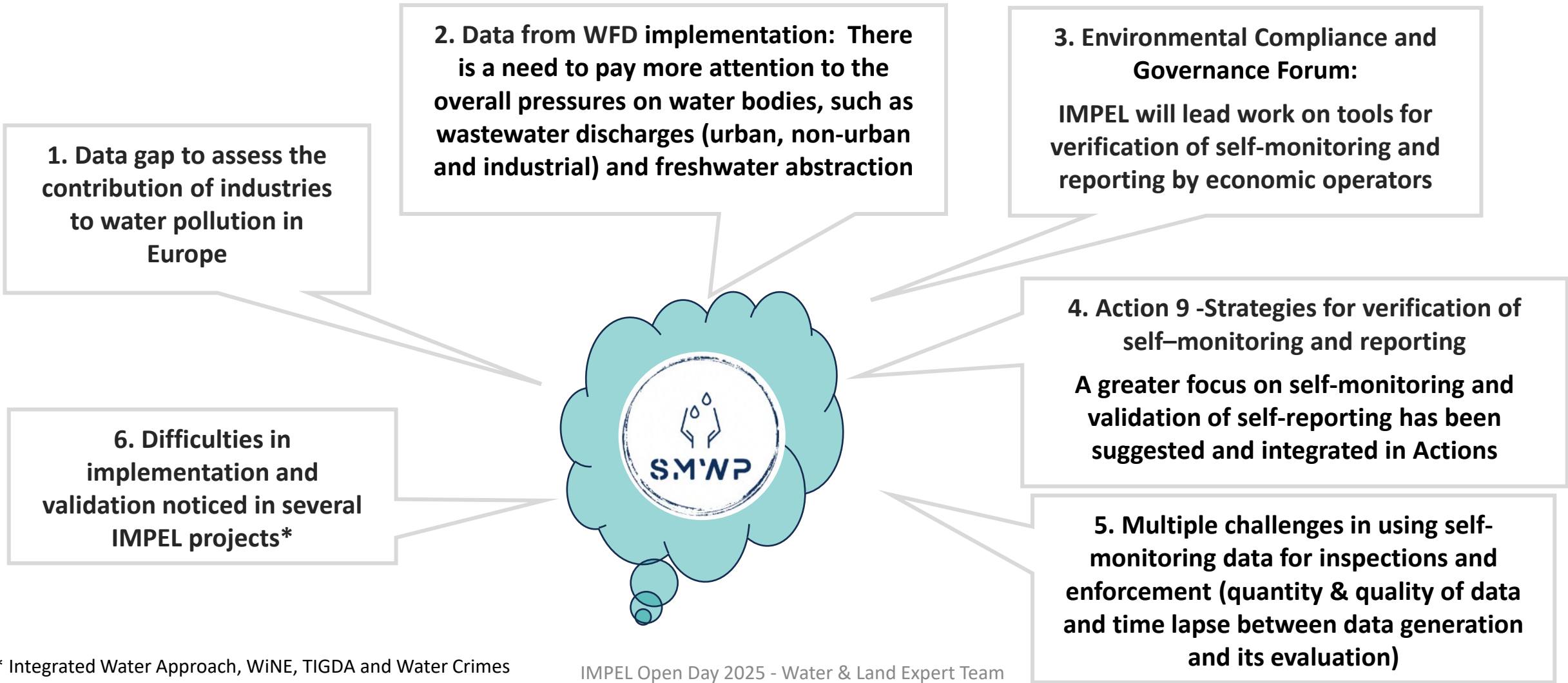
Genève Farabegoli (ISPRA) & Anabela Rebelo (APA)

Water & Land Expert Team
IMPEL Open Day - 29 January 2025



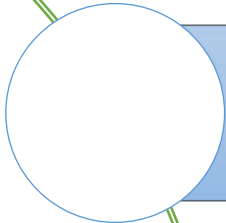
Funded by the
European Union

Why this project is needed

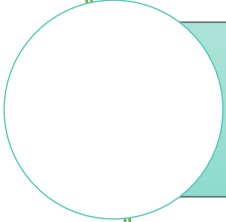


* Integrated Water Approach, WiNE, TIGDA and Water Crimes

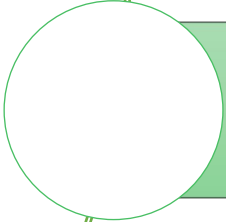
Main activities over 3 years



Collect information on self-monitoring practices (plans, reports, IT tools, data and methods assessment etc..)



Workshop on self-monitoring under abstraction of freshwater, wastewater discharge, water reuse permitting



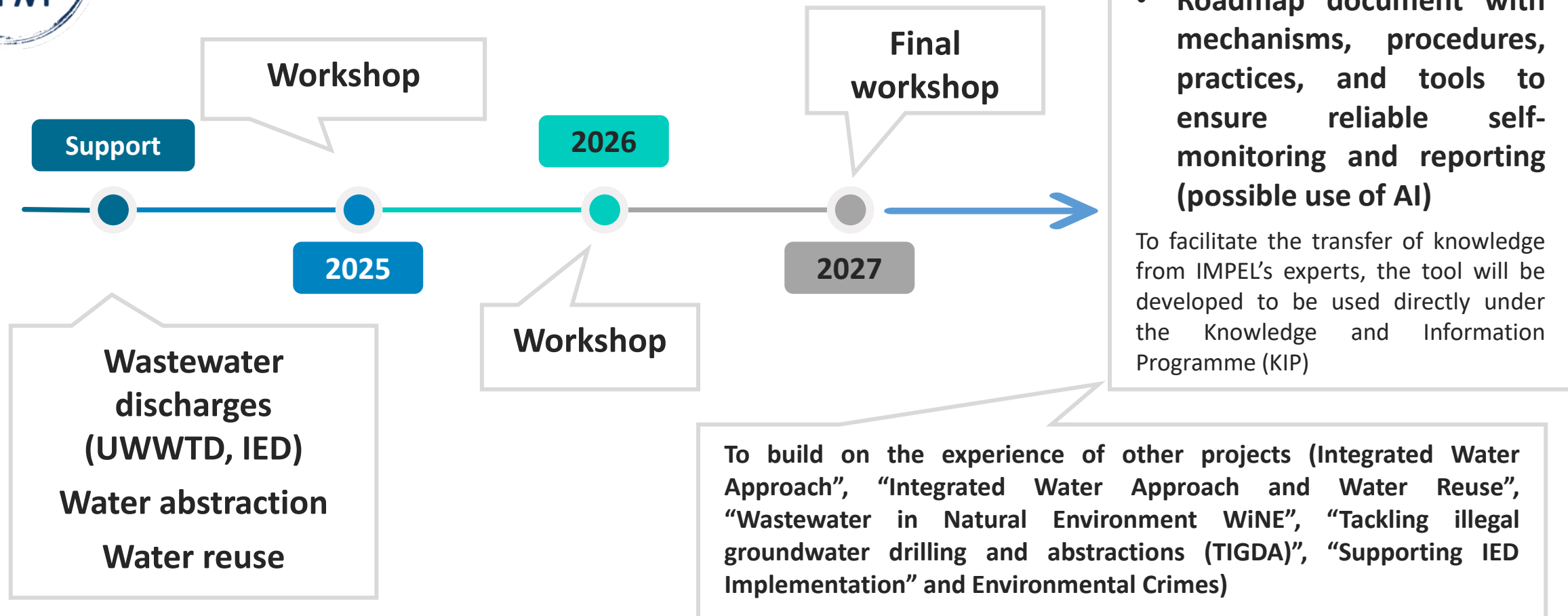
Analysis of the best practices for self-monitoring plans development, reporting, data assessment and possibilities on the use of IT tools



Roadmap document to define and/or improve SMWPs



Self Monitoring In Water Permits (SMWP)



Main deliverables over 3 years

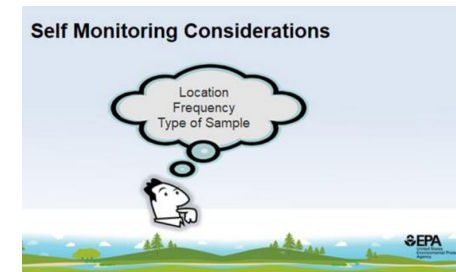
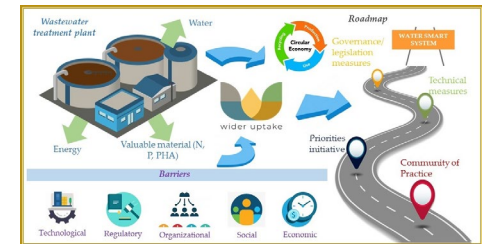
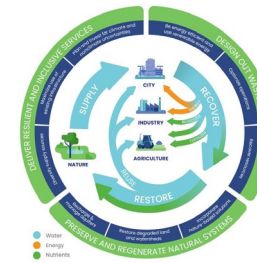


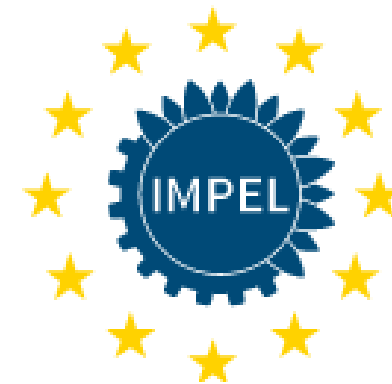
1) Report on the results of the questionnaire collecting all the information on self-monitoring practices

2) Questionnaire results integrated with the workshop results (using AI)

3) Roadmap to define and/or improve Self-monitoring Programs in Water Permits + Guidance

Parametri misurati						
Concentrazioni misurate in emissione						
Scarico	Parametro	Frequenza	UDM	Valori Misurati		Valore limite di Legge
				I SEMESTRE S123-00194	II SEMESTRE S123-00821	
S1	Alluminio	Semestrale	mg/L	<0.13	0.069	<1
	Arsenico	Semestrale	mg/L	<0.025	0.0096	<0.5
	Azoto ammoniacale (come NH4)	Semestrale	mg/L	<1.0	<1.0	<15
	Azoto nitrico (come N)	Semestrale	mg/L	<1	<1.0	<20
	Azoto nitroso (come N)	Semestrale	mg/L	<0.2	<0.2	<0.6
	Bario	Semestrale	mg/L	<0.13	0.0271	<20
	BOD5 (come O2)	Semestrale	mg/L	<5	<5	<40
	Boro	Semestrale	mg/L	1.81	5.7	<2 NOTA (1)
	Cadmio	Semestrale	mg/L	<0.005	<0.0050	<0.02
	Cianuri totali (come CN)	Semestrale	mg/L	<0.01	<0.01	<0.5
	Cloro attivo libero	Mensile	mg/L	0.1	0.11	<0.2
	Cloruri	Semestrale	mg/L	22300	22900	NOTA (2)
	COD (come O2)	Semestrale	mg/L	<10	<10	<180
	Colore	Semestrale	-	Assente	Assente	non percettibile con diluizione 1:20
	Cromo totale	Semestrale	mg/L	<0.025	0.0284	<2
	Cromo VI	Semestrale	mg/L	<0.01	<0.01	<0.2
	Escherichia coli	Semestrale	UFC/100mL	Microorganismi non presenti	Microorganismi non presenti	-
	Fenoli	Semestrale	mg/L	<0.1	<0.1	<0.5
	Ferro	Semestrale	mg/L	0.49	0.365	<2
	Fluoruri	Semestrale	mg/L	3.04	1.27	<6
	Fosforo totale (come P)	Semestrale	mg/L	<0.1	<0.01	<10
	Grassi e olii animali/vegetali	Semestrale	mg/L	<0.25	<0.25	<20
	Ibocarburi totali	Semestrale	mg/L	<0.25	<0.25	<5
	Manganese	Semestrale	mg/L	<0.13	0.00418	<2
	materiali grossolani	Semestrale	-	Assente	Assente	assenti
	Mercurio	Semestrale	mg/L	<0.0013	0.00092	<0.005
	Nichel	Semestrale	mg/L	<0.025	0.033	<2
	odore	Semestrale	-	1	1	non deve essere causa di molestie





Contact information:

- ✓ **For joining this project:** If you work for an IMPEL member organisation and would like to join the project or receive further information, **please contact the National Coordinator of your country and the Project Manager at geneve.farabegoli@isprambiente.it; anabela.rebelo@apambiente.pt**
- ✓ **For becoming a member of IMPEL:** If you are from an Environmental Authority or association of authorities that is based in a member state of the EU, a candidate country or another country applying Community law and would be interested in becoming a member of IMPEL, **please contact IMPEL Secretariat at info@impel.eu** for more information.
- ✓ **For all other interested parties:** please check out our new website for further information! www.impel.eu



Funded by the
European Union