



IMPEL Open Days



OPEN DAY
WATER & LAND

Wednesday 29 January
10:00 – 12:05 CET
Scan the QR code and
discover our projects 2025-27
www.impel.eu

OPEN DAY
CROSS CUTTING

Wednesday 5 February 10:00 – 12:15 CET
Scan the QR code and discover our
projects 2025-27
www.impel.eu

OPEN DAY
WASTE AND TRANSFRONTIER
SHIPMENT OF WASTE

Wednesday 12 February 10:00 – 12:00 CET
Scan the QR code and discover our
projects 2025-27
www.impel.eu

OPEN DAY
NATURE PROTECTION

Wednesday 19 February 10:00 – 11:30 CET
Scan the QR code and discover our
projects 2025-27
www.impel.eu

OPEN DAY
INDUSTRY & AIR

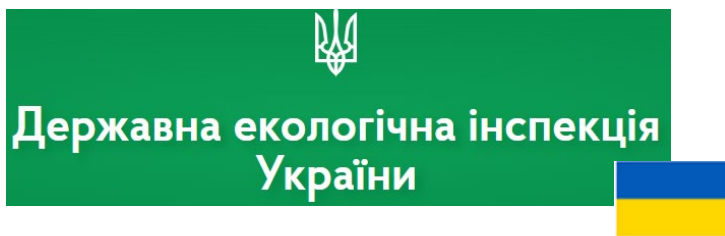
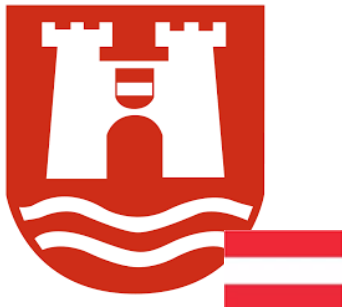
Wednesday 5 March 10:00 – 12:05 CET
Scan the QR code and discover our
projects 2025-27
www.impel.eu

www.impel.eu

Marco Falconi, Florije Kqiku, Rob Kramers

Network of regulators

- An international non-profit organisation of environmental authorities, based in Brussels, founded in 1992
- **38 Member countries, 57 Institutions** at the moment
- IMPEL's mission is ensuring **effective implementation and enforcement** of European environmental law by promoting professional collaboration, information and best-practice exchange between environmental regulators.



Albania



Austria



Belgium



Bulgaria



Croatia



Cyprus



Czech Republic



Denmark



Estonia



Finland



France



Germany



Greece



Hungary



Iceland



Ireland



Italy



Kosovo



Latvia



Lithuania



Luxembourg



Malta



Montenegro



Netherlands



North Macedonia



Norway



Poland



Portugal



Romania



Serbia



Slovak Republic



Slovenia



Spain



Sweden



Switzerland



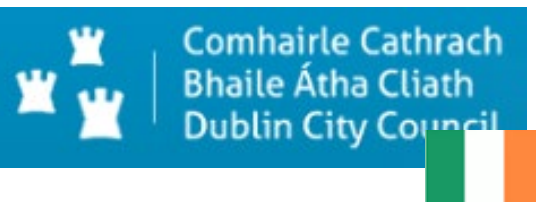
Turkey

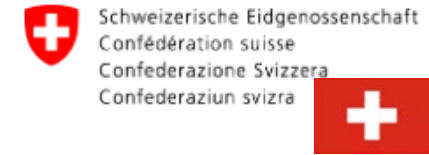
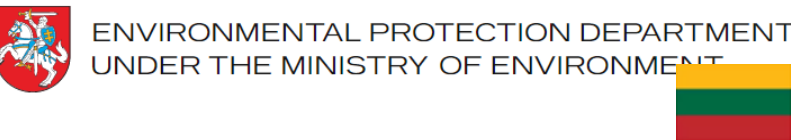


Ukraine



United Kingdom





How IMPEL helps

- **Helping countries get to compliance more quickly**
 - Sharing knowledge, good practices, peer reviews (IRI's), national peer reviews (NPRI)
- **Helping implementing organisations use their limited resources more effectively**
 - Producing technical guidances and tools, translating them in different languages, training with KIP
- **Facilitating communication between experts**
 - Questions & Answers in Basecamp with your peers of other countries, technical meetings, train the trainer
- **Informing policy with practical experience and expertise**

(06 Expert Team: Industry & Air) 🙋 Short inquiry regarding EU ETS

The client can see this message and all replies.

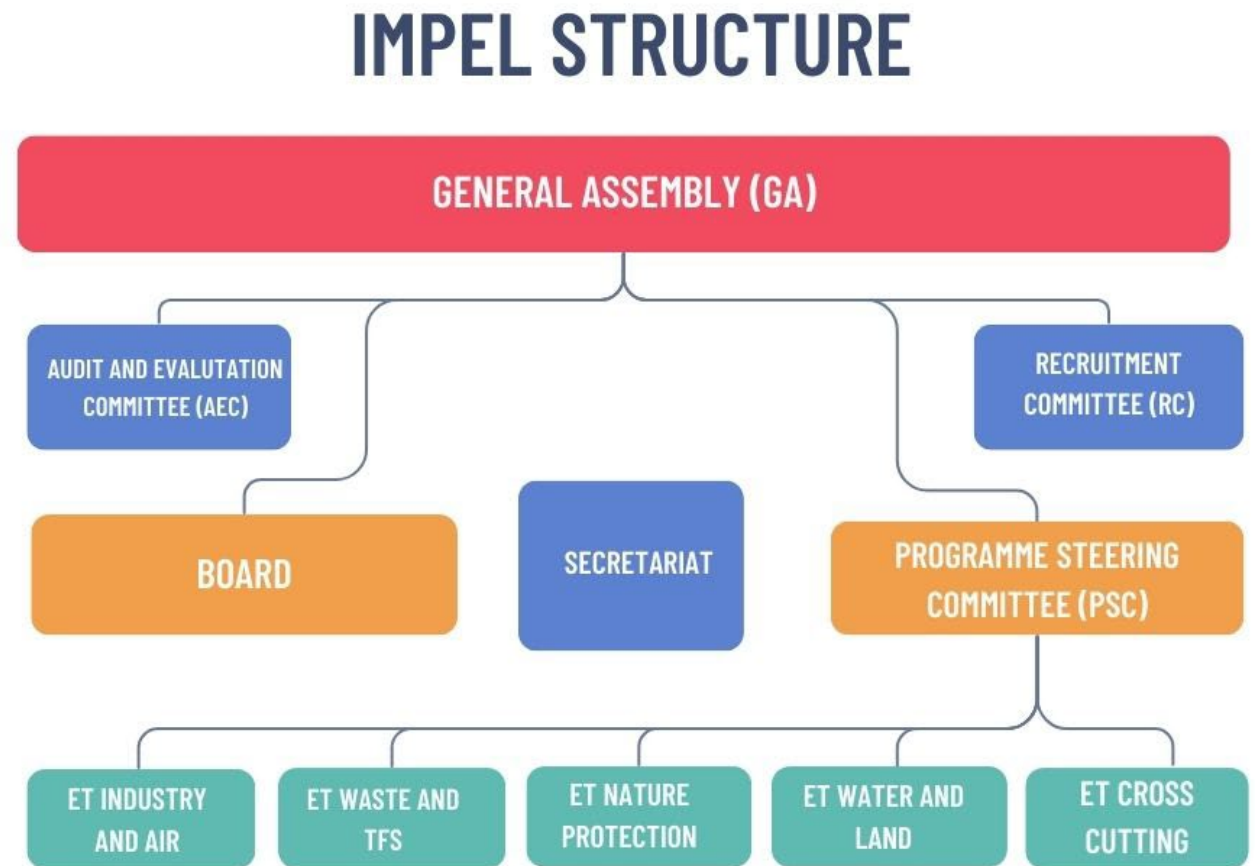
Dear I&A experts,

Short inquiry regarding EU ETS. Do you estimate emissions from aviation operations if the operator does not provide this information to the competent authority? If so, where do you obtain the information necessary to estimate it from? (i.e. regarding flights performed by air operators covered by the EU ETS, outside your airspace??)



Organisational structure and Financing

- **Funding from members**
(annual membership fees, financial donations)
- **EU Commission**
(Framework Partnership agreement, Operating and Action Grant agreements based on new LIFE Regulation; External projects)
- **Members' Experts' time**
(in-kind contributions, project and networking participation, posts of responsibility)
- Collaboration with other funding mechanisms to support commonly sponsored events



Advantages on becoming an IMPEL member

Membership of IMPEL is open to public authorities that implement and enforce environmental legislation.

- Extensive **networking opportunities** with other implementation and enforcement specialists
- Access to IMPEL Basecamp, that facilitates networking, interaction and **sharing of information between members**
- **Capacity building** in your organisation by offering opportunities to learn through projects, conferences and trainings.
- Taking part in project with a **paid place** (travel & accommodation)
- Taking part in **IMPEL structure** (General Assembly, Board, PSC, ETs, AEC, RC, project managers...)



Thank you!

info@impel.eu

(Will Fawcett, IMPEL Secretariat)

