



Criteria for the Assessment of the Environmental Damage (CAED)



Daniele Montanaro, Francesco Andreotti

(ISPRA – Italian Institute for the Environmental Protection and Research)

Cross-Cutting Tools & Approaches Expert Team

IMPEL Open Day - 05 February 2025



Funded by the
European Union

Scope of the CAED project

Environmental Liability Directive (ELD) 2004/35/CE



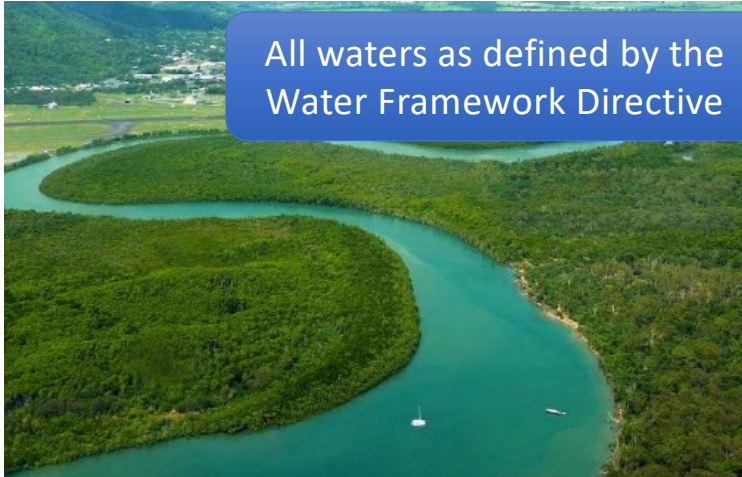
ENVIRONMENTAL DAMAGE

Any significant and measurable deterioration, direct or indirect, compared to the baseline condition of a natural resource or the utility provided by it

NATURAL RESOURCES



Species and habitat protected by the Habitat Directive and Birds Directive



All waters as defined by the Water Framework Directive



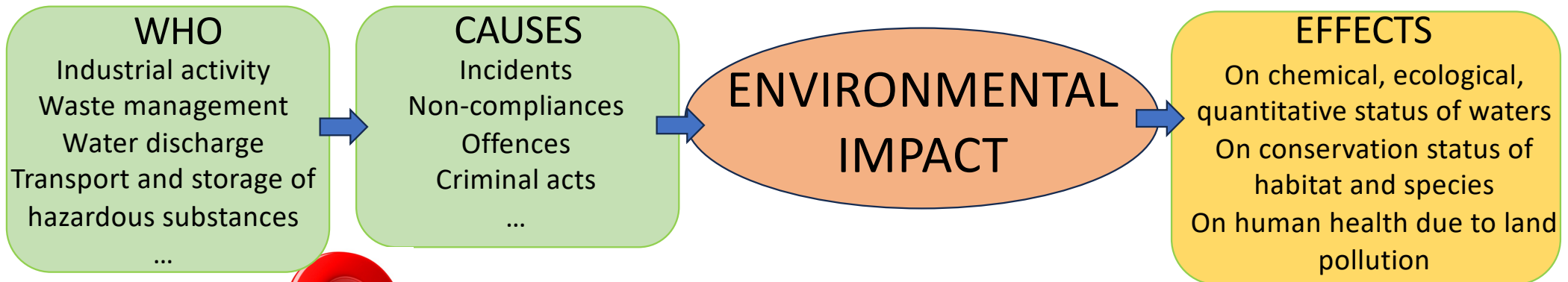
Land

Why this project is needed



BACKGROUND (EU Commission Studies, REFIT evaluation, ..)

- diverging interpretations of the ELD requirements
- poor effectiveness and efficiency of the ELD implementation in Member States
- ELD implementation requires deep knowledge of others EU Directives



DOES THE ELD APPLIES TO THIS CASE?

Aim of the project



- ❖ ELD IMPLEMENTATION REQUIRES COOPERATION AND COORDINATION AMONG VARIOUS PARTIES
 - ❖ MULTI-DISCIPLINARY EXPERTISE TO EVALUATE CAUSES AND EFFECTS
 - ❖ ASSESSING THE ENVIRONMENTAL DAMAGE AS SOON AS POSSIBLE



The CAED project aimed to provide criteria, methods, and useful tools to enhance competent authorities and practitioner's capability in promptly and effectively determining environmental damage

CAED project has been included in the ELD Multi-Annual Rolling Work Programme (MARWP) 2021-2024 of the EU Commission as one of the activities for capacity building

Main steps (2019-today)

➤ Know the background!

CAED Final Report (Report Impel 2019/18)

- Existing national guidelines or procedures
- Questionnaire-based survey to collect information, experience and issues in environmental damage ascertainment

➤ Defining methodology for the ascertainment based on SCREENING - CLUES finding - EVIDENCE finding

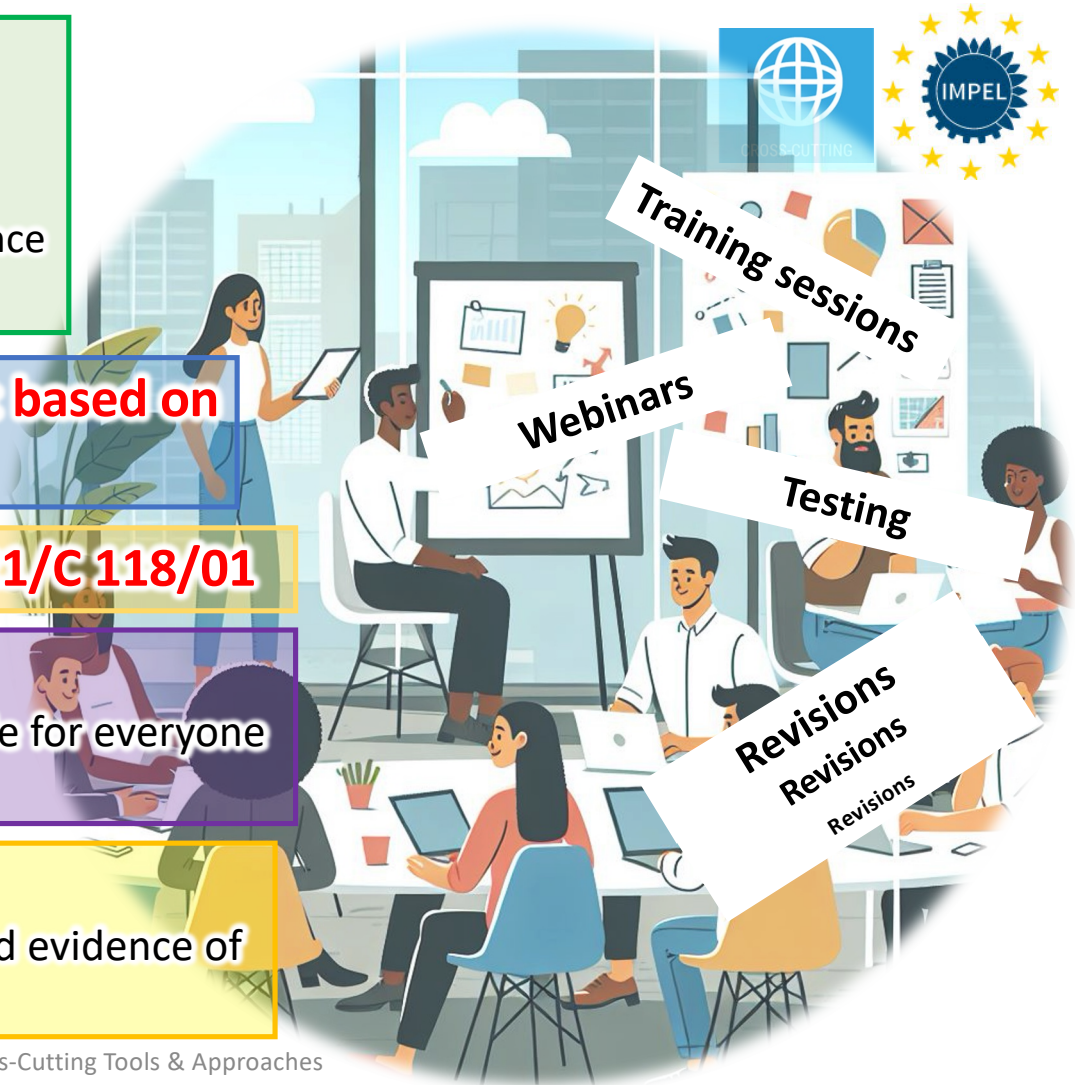
➤ Creating links with the EU Comm. Notice 2021/C 118/01

➤ CAED PRACTICAL GUIDE

Make the implementation of the ELD more understandable for everyone (definitions, diagrams, decision-making flow charts, ...)

➤ CAED PRACTICAL TABLES

A toolkit for screening of the cases and finding of clues and evidence of damage based on indicators and checklist

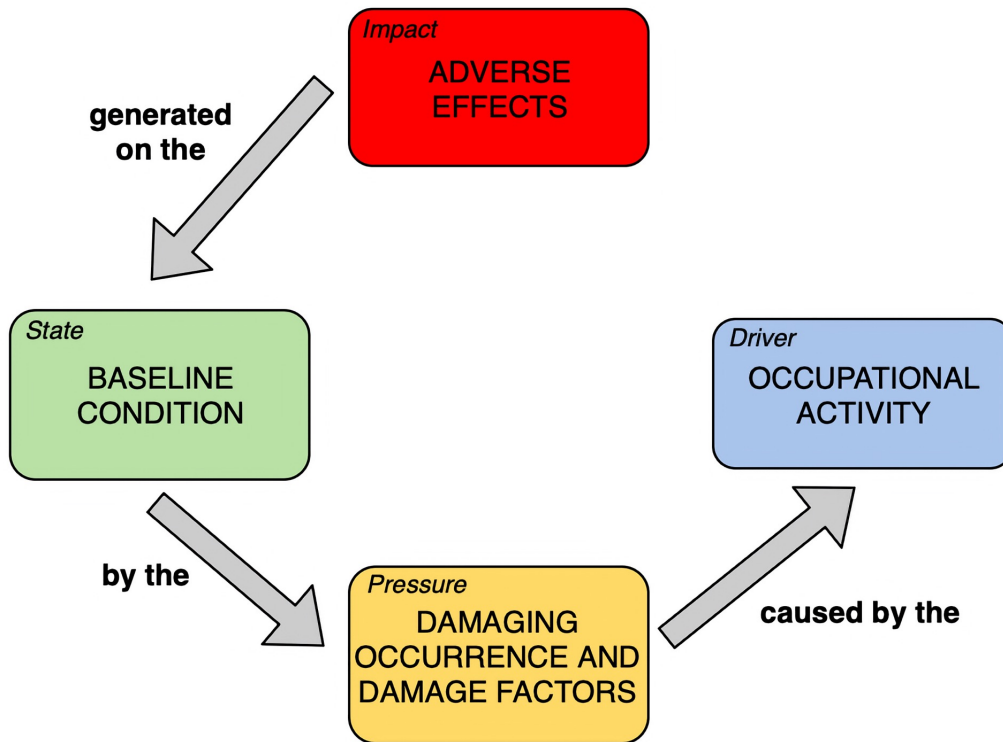


Methodology for damage ascertainment

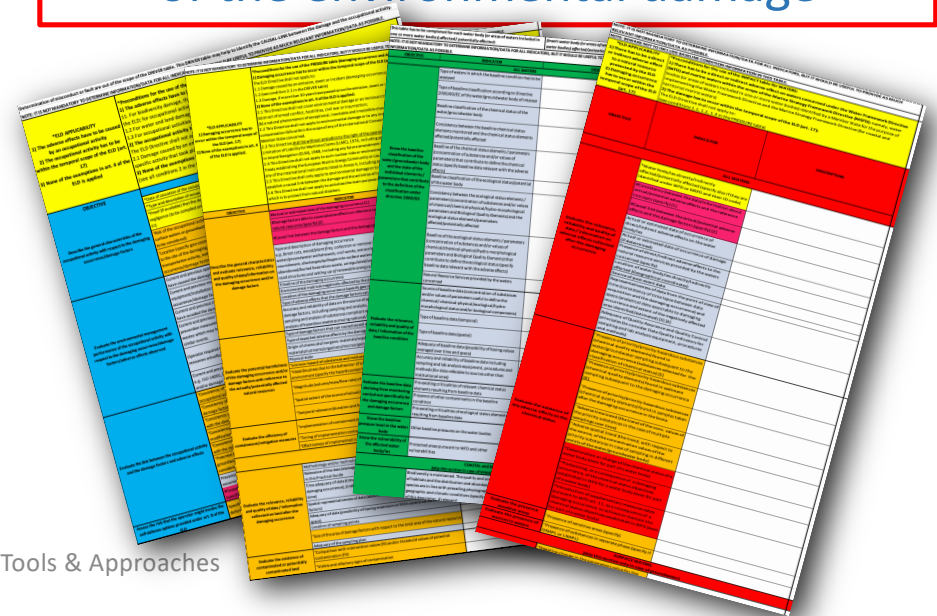


ISPD Model

based on the DPSIR model



PRACTICAL TABLES
List of indicators for each component of the DPSIR driving the users towards the identification of Clues/Evidences of the environmental damage





European Union Network
for the Implementation
and Enforcement of Environmental Law

Select Language

EN

[LOGIN](#)

[OUR NETWORK](#)

[TOPICS](#)

[LIBRARY](#)

[NEWS](#)

[Home](#) > [Cross-cutting tools & Topics Approaches](#) > [Environmental Damage & Liability](#) > [Criteria for the Assessment of the Environmental Damage \(CAED\)](#)



CROSS-CUTTING TOOLS & APPROACHES | ENVIRONMENTAL DAMAGE & LIABILITY



[GUIDANCE AND TOOLS](#)

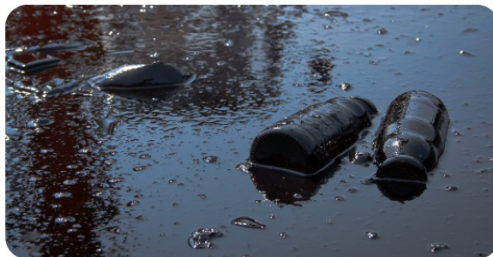


[LEARNING](#)



[PROJECTS](#)

Criteria for the Assessment of the Environmental Damage (CAED)



Year
2019

Status
Ongoing

Lead country and contact

Italy
[Francesco Andreotti](#)

References

[ToRs 2022-24/ CAED](#)

Tags

[ECD](#)

[ELD](#)

[Indicators/criteria](#)

[Methodology](#)

[Remediation](#)

NAVIGATION

[About](#)

[Project outputs](#)

[Reports](#)

[Guidance and tools](#)

[Learning](#)

[Project news](#)



Coming soon...

Training & Knowledge



CAED face to face training in the 3-days ELD Pilot Workshops of Eu. Comm - DG ENV E.4

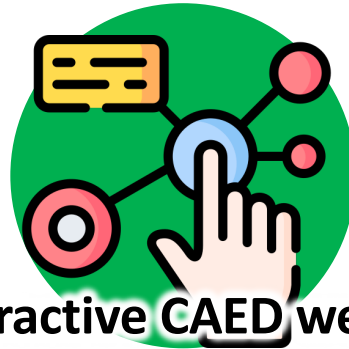
Half day will be covered by
CAED project members with
presentations and exercises.

ATHENS, October 2024 

BUCHAREST, November 2024 

RIGA, April 2025

Other Member States ...?



Interactive CAED webpages

Transform the CAED
Practical Guide in a user-
friendly website, packed
with diagrams and
interactive visuals that
make complex
information easy to
grasp!



CAED e-learning platform

On-line training, video
tutorials and test
sessions



Contact information:

- ✓ **For joining this project:** If you work for an IMPEL member organisation and would like to join the project or receive further information, **please contact the National Coordinator of your country and the Project Manager at francesco.andreotti@isprambiente.it; daniele.montanaro@isprambiente.it**
- ✓ **For becoming a member of IMPEL:** If you are from an Environmental Authority or association of authorities that is based in a member state of the EU, a candidate country or another country applying Community law and would be interested in becoming a member of IMPEL, **please contact IMPEL Secretariat at info@impel.eu** for more information.
- ✓ **For all other interested parties:** please check out our new website for further information!
www.impel.eu



Funded by the
European Union