

Waste Management & Circular Economy

Romano Ruggeri (Project Leader)

IMPEL Open Day - 12 February 2025



Funded by the
European Union

THE CONTEXT: CEAP



Contents



EUROPEAN COMMISSION

Brussels, 11.3.2020

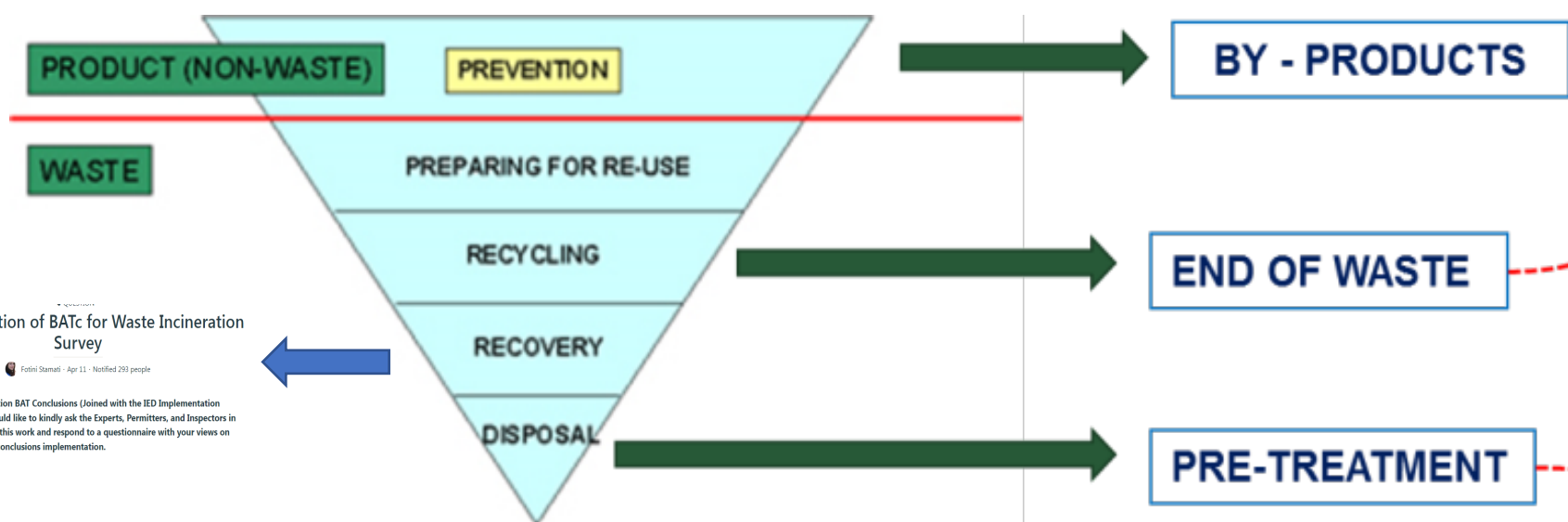
COM(2020) 98 final

**COMMUNICATION FROM THE COMMISSION TO THE EUROPEAN PARLIAMENT, THE COUNCIL,
THE EUROPEAN ECONOMIC AND SOCIAL COMMITTEE AND THE COMMITTEE OF THE REGIONS**

A new Circular Economy Action Plan

For a cleaner and more competitive Europe

1. INTRODUCTION
2. A Sustainable Product Policy Framework
 - 2.1. Designing sustainable products
 - 2.2. Empowering consumers and public buyers
 - 2.3. Circularity in production processes
3. Key Product Value Chains
 - 3.1. Electronics and ICT
 - 3.2. Batteries and vehicles
 - 3.3. Packaging
 - 3.4. Plastics
 - 3.5. Textiles
 - 3.6. Construction and buildings
 - 3.7. Food, water and nutrients
4. LESS WASTE, MORE VALUE
 - 4.1. Enhanced waste policy in support of waste prevention and circularity
 - 4.2. Enhancing circularity in a toxic-free environment
 - 4.3. Creating a well-functioning EU market for secondary raw materials
 - 4.4. Addressing waste exports from the EU
5. Making circularity work for people, regions and cities
6. CROSSCUTTING ACTIONS
 - 6.1. Circularity as a prerequisite for climate neutrality
 - 6.2. Getting the economics right
 - 6.3. Driving the transition through research, innovation and digitalisation
7. LEADING EFFORTS AT GLOBAL LEVEL
8. MONITORING PROGRESS
9. Conclusion



Implementation of BATc for Waste Incineration Survey
 Fotini Stamati - Apr 11 - Notified 293 people
 The WGS Waste incineration BAT Conclusions (Joined with the IED Implementation project) project team would like to kindly ask the Experts, Permittees, and Inspectors in IMPEL to please support this work and respond to a questionnaire with your views on Waste Incineration BAT-conclusions implementation.



TRAINING



WHAT WE HAVE DONE SO FAR (TOOLS)



- *Guidance on By-products*
- *IED&Circular economy Guidance*
- *Risk based inspection plan for waste recycling plants*
- *Waste incineration inspection checklist and self monitoring plan*



- Guidance on Circular Economy
- End of waste practical tools
- REACH & Circular economy Guidance
- Landfill Inspection Guidance
- Pretreatment of waste before landfilling
- Landfill Directive Implementation gaps



EOW DATABASE

1. This tool aims at creating the **structure of a voluntary database** to help permit writers, inspectors and operators to find information on end-of waste case-by-case decisions or resulting from self-assessment verification.
2. The suggested database, which is not mandatory, is one of the possible tools to answer to the following indications of the WFD 2018: Article 6: “*Member States may make information about **case-by-case decisions and about the results of verification** by competent authorities **publicly available** by electronic means*”.
3. Meeting with FEAD, DG Environment, OVAM: common database including national EoW database (survey in Basecamp)
4. IT company finalizing the conversion of the database

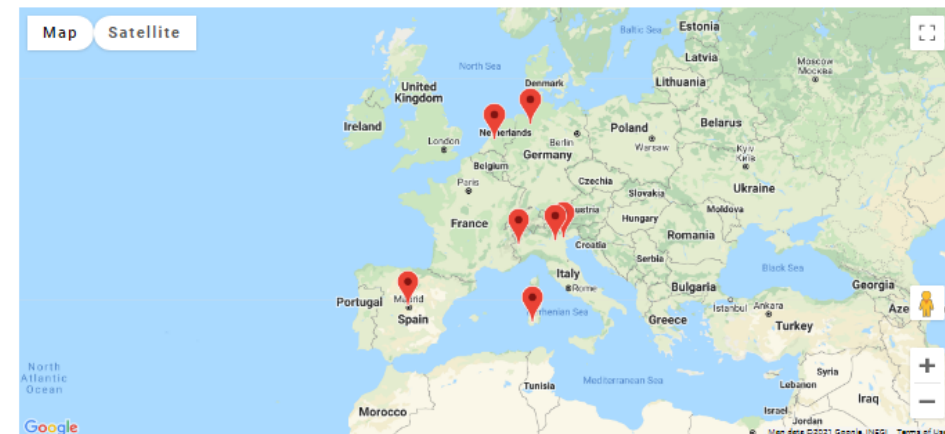
End-of-waste case-by-case decisions

This tool aims at creating the structure of a voluntary database to help permit writers, inspectors and operators to find information on end-of waste case-by-case decisions or resulting from self-assessment verification.

This database is an answer to the following indication of the Waste Framework Directive, Article 6:

“Member States may make information about case-by-case decisions and about the results of verification by competent authorities publicly available by electronic means”.

The database aims at promoting a regular exchange of information around case by case end-of-waste, in order to achieve a level playing field and homogenize technical and environmental standards across EU in those cases where EU and/or national regulation is missing.



Search

SUBMIT

× RESET

[Green compost, wood chips – Italy](#)

[Substrate materials for road surfaces – Italy](#)

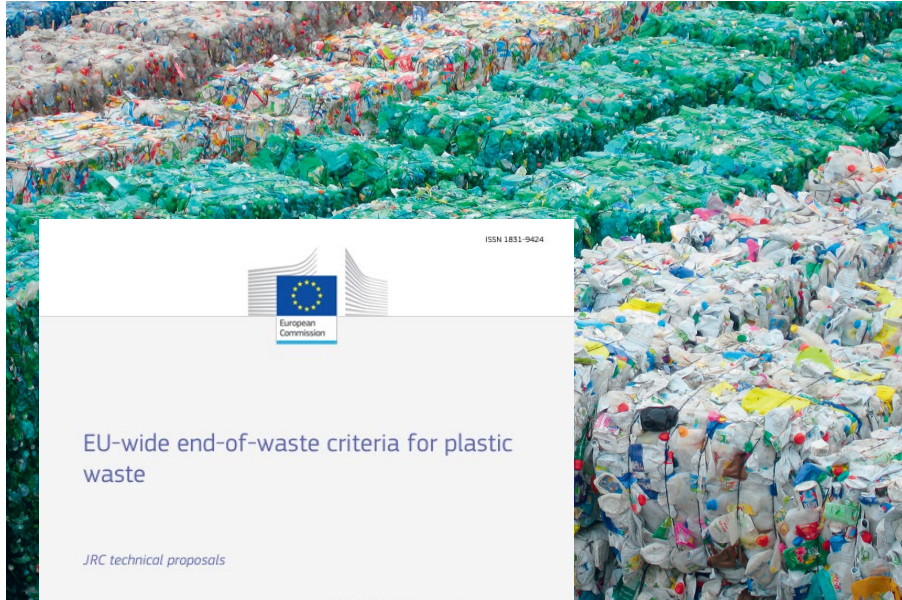
[paper fabrication – Spain](#)

TOPICS OF WMCE 2025



- ARTIFICIAL INTELLIGENCE ON WASTE
- RISK BASED INSPECTION PLAN
- PLASTIC EoW
- NEW BUSINESS MODELS (reuse ecc)
- TEXTILE EoW -
- ORGANIC EoW
- TRAINING PROGRAMME

PLASTIC EOW SUBGROUP



- Increase knowledge on plastic recycling technologies – site visits
- Check the current available EoW plastic criteria vs JRC proposal
- Check the proper implementation of the future EU plastic EoW criteria
- Knowledge exchange between Waste and TFS inspectors by means of joint activities
- Develop inspection checklist embedding the different steps of the plastic recycling process
- Gathering cases of illegal flows of plastic waste indicated as EoW.

ORGANIC EOW SUBGROUP



By 2024, under the [Waste Framework Directive](#) (2008/98/EC), EU countries will have to collect organic waste separately.



Brussels, 18.5.2022
SWD(2022) 230 final

COMMISSION STAFF WORKING DOCUMENT

IMPLEMENTING THE REPOWER EU ACTION PLAN: INVESTMENT NEEDS,
HYDROGEN ACCELERATOR AND ACHIEVING THE BIO-METHANE TARGETS

Accompanying the document

COMMUNICATION FROM THE COMMISSION TO THE EUROPEAN
PARLIAMENT, THE EUROPEAN COUNCIL, THE COUNCIL, THE EUROPEAN
ECONOMIC AND SOCIAL COMMITTEE AND THE COMMITTEE OF THE
REGIONS

REPowerEU Plan

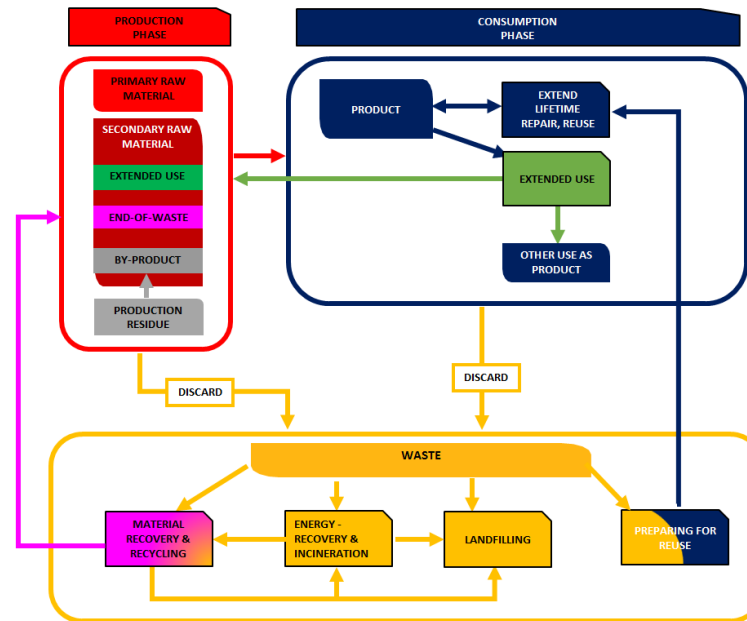
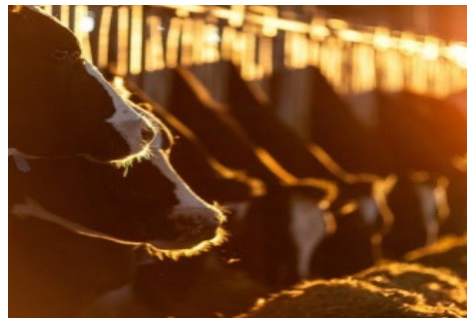
- Mapping best practices on organic waste recycling
- Gathering information on EoW criteria for compost and digestate
- Mapping technologies used for organic treatment: composting, anaerobic digestion, biomethane production, energy from biogas
- Analysis of the critical points of the system
- Site visits at organic recycling installations
- Develop an inspection checklist at different recycling installations
- Critical environmental aspects of the different recycling technologies: tips for permit writers

TEXTILE EOW SUBGROUP



- Discuss the issues around textiles and the abuse of moving waste textiles without the correct documentation
- Collaboration with ENFORCE, UNITAR and UNODC on textile projects as textiles
- Presentations and guidance that can be provided to third parties outlining the requirements
- Mapping textile waste prevention, preparing for re-use and recycling approaches in MS following the mandatory requirement of separate collections.
- Mapping recycling infrastructure and technologies available in MS.
- Mapping separate collections and EPR system in place.
- Joint inspections between WFD and TFS inspectors
- Collation of members positions and requirements to demonstrate end of waste compliance

PREVENTION OF WASTE NEW BUSINESS MODELS



- Introduce the topic of discard and new circular economy business models.
- Provide general explanation on when a material is not discarded but reused or further used.
- What conditions have to be met for reuse and for extended use
- Explain distinction between extended use and reuse
- Explain distinction between reuse and preparing for reuse
- Procedures that can be followed (prior approval or via operator self-assessment / enforcement)
- Burden of proof

SUBGROUP RISK BASED WASTE INSPECTION PLAN



**PRIORITIZE INSPECTIONS
RISK ANALYSIS**



- ▶ Train organizations on how to set up a risk based Plan of inspections at waste recycling installations. Use the issued Guidance.
- ▶ Homogenise risk assessment criteria throughout Member States.
- ▶ Optimize the use of resources and direct them to the most critical activities.
- ▶ Collect different sets of criteria to be used in the risk assessment.
- ▶ Liaise with other inspection authorities with competences on products and waste legislation (REACH, TFS ecc.).

ARTIFICIAL INTELLIGENCE IN WASTE MANAGEMENT



- ▶ Desk study on AI: bibliographical research
- ▶ Survey to gather existing case studies and projects of AI use in waste management
- ▶ Investigate the areas of waste management which could benefit of the use of AI
- ▶ Investigate the criminal use of AI in waste management
- ▶ Dissemination of results in a workshop

TRAINING ON WASTE MANAGEMENT & CE



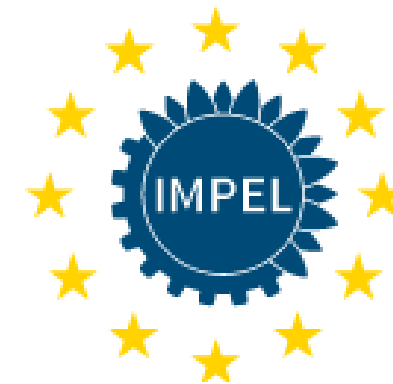
- ▶ Implementation Challenge report on Waste Management and Circular Economy
- ▶ Knowledge Exchange Programme
- ▶ Study tours final reports
- ▶ Evaluation report

WHO WE ARE LOOKING FOR



CORE TEAM / ACTIVE MEMBERS

- ▶ Experts in EoW (different sectors)
- ▶ Experts in AI for waste management
- ▶ Experts in new business models
- ▶ Administrators of the EoW database
- ▶ Trainees



Contact information:

- ✓ **For joining this project:** If you work for an IMPEL member organisation and would like to join the project or receive further information, **please contact your National Coordinator and the Project Manager at rruggeri@impel.eu**
- ✓ **For becoming a member of IMPEL:** If you are from an Environmental Authority or association of authorities that is based in a member state of the EU, a candidate country or another country applying Community law and would be interested in becoming a member of IMPEL, **please contact IMPEL Secretariat at info@impel.eu** for more information.
- ✓ **For all other interested parties:** please check out our new website for further information! **www.impel.eu**



Funded by the
European Union