



SUNY Office of Library and Information Services
May 2023 Quarterly Update



Agenda

- **Introductions and Updates from Kim Scalzo**, *Interim Senior Associate Provost for Digital Innovation and Academic Services*
- **SUNY Office of Library and Information Services:**
 - Updates and Strategic Plan
 - Research Data Management
 - OER/ Professional Development
 - SUNY Library Services
 - Resource Management
 - Collections



Hello!

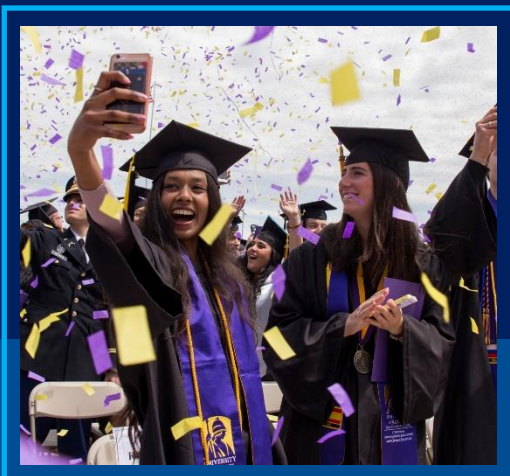
- **Catherine Stollar Peters** – SUNY OLIS Associate Director of Assessment and Data Analysis
- **Cori Wilhelm** – SUNY Libraries Program Manager
- **Tim Jackson** – SUNY SLS Resource Sharing Program Manager
- **Maureen Clements** - SUNY Library Services Associate Director

<https://oer.suny.edu>

<https://slcny.libguides.com/olis>



Chancellor's Priorities



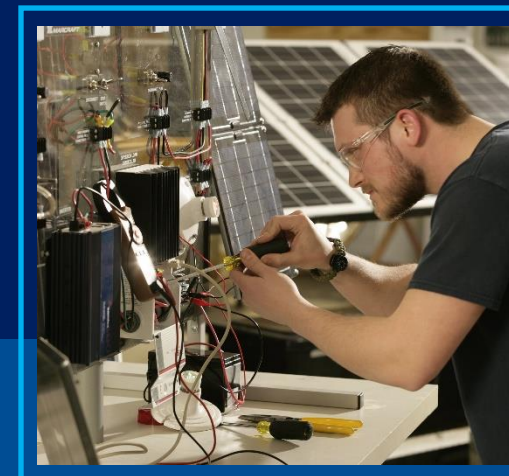
**Student
Success**



**Diversity,
Equity,
Inclusion**



**Research and
Scholarship**



**Economic
Development
and Upward
Mobility**



Caution: Textbook Publishers and “Inclusive Access” Strategies

“Inclusive Access” is a sales model that adds digital course content to students’ tuition and

While Inclusive Access is intended to address high textbook costs and challenges for students and the higher education community deserves to understand the facts.



<http://inclusiveaccess.org>

<https://tinyurl.com/FCCcinclusiveaccess>

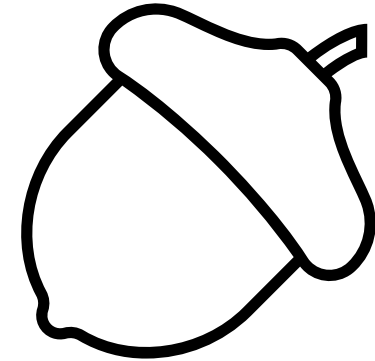


SUNY Office of Library and Information Services



Growth and change at OLIS

- Transition from SLC Board governance to OLIS Advisory Board structure
- Updated mission statement
- Three-year strategic plan



<https://slcnyc.libguides.com/olis>



OLIS Advisory Board Updates

- Current activities
 - Advisory Board administration planning
 - Strategic plan reporting
 - Future-focused, forward-thinking perspective
- Advanced agenda to share and gather questions/feedback with constituents
- Quarterly meetings (September, December)
- Updates to website
 - Mission statement
 - Contact the Advisory Board and feedback form

https://slcnyc.libguides.com/olis/advisory_board



OLIS Strategic Plan 2023-2026

**Data-
informed
Decision
Making**


**Partner with
Libraries and
Institutions
Navigating
Complex
Change**

**Foster
Networks,
Collaboration,
and Campus
Faculty and
Staff
Development**

**Support
Student and
Faculty Access**



OLIS Strategic Planning

 <p>OLIS Foundations 2023-2026</p>	<p>SUNY Vision</p> <p>Student Success DEI Research & Scholarship Economic Development & Upward Mobility</p>	<p>SUNY OLIS Vision</p> <p>Helping SUNY libraries and affordable learning support programs maintain excellence, navigate change, and serve as an incubator to foster innovation and creative solutions.</p>	<p>SUNY OLIS Mission</p> <p>OLIS strives to support excellence and innovation in libraries and affordable learning programs by building collaborative learning networks, developing efficient shared services, growing, and sharing campus staff expertise, and enhancing system-wide best practices.</p>	<p>SUNY Library Services Serves</p> <ul style="list-style-type: none"> • Campus library and information service providers (library directors, faculty, and staff) • Campus library and information service users (faculty and students) • SUNY Administration (system and campus administrators)
<p>Themes</p>	<p>Data-informed Decision Making</p>	<p>Partner with Libraries and Institutions Navigating Complex Change</p>	<p>Foster Networks, Collaboration, and Campus Faculty and Staff Development</p>	<p>Support Student and Faculty Access</p>
<p>Goals*</p>	<p>A. Develop data-driven strategies to sustain and grow OLIS programs overall and within specific functional areas. B. Build Programs to collaboratively share assessment and evaluation best practices. C. Create and enhance practical data-gathering tools and offerings.</p>	<p>A. Identify key areas for service transformation within libraries and create scaffolding to support these transformations. B. Grow Open Educational Resources Services Offerings. C. Collaboratively grow new and established library-related services to maximize efficiencies of scale. D. Build engagement network of Advisory Boards, Communities of Practice and Task Forces whose input OLIS can draw upon for strategic direction.</p>	<p>A. Leverage existing relationships with campuses to identify strengths and expertise that can be applied more broadly across the SUNY system.</p>	<p>A. Empower students and faculty by providing access to resources and professional development opportunities that can improve teaching, learning, research, and advancement.</p>
<p>Operational Metrics</p>	<p>(OLIS Program Metrics) Design annual success metrics for OLIS functional areas (LSP support, IR, Resource Sharing, Collections, RDM) # of students, # of faculty and staff, # of campuses served total # of students, # of faculty and staff, # of campuses served in each functional area \$ saved in OLIS functional areas (Campus Metrics) Build Assessment plan with achievable metrics</p>	<p>Build functional Advisory Boards and CoPs # of participant interactions with communities of practice # of and % of campuses engaged with communities of practice # of listserv members Survey CoPs on collaborative work and satisfaction SWOT analysis of SLS service offerings (compare to perceived campus need) # of extended support agreements \$ saved by extended support agreements # of campuses participating in opt-in contracts \$ saved by campuses participating in opt-in contracts # of SUNY ORCID marketing and support offerings</p>	<p># of campus staff onboarding sessions and onboarding participants, average length of sessions Capture satisfaction survey data # of updated SDR and SOAR policies # of SDR total items # of SOAR total items SDR and SOAR usage analytics # of Leadership certificates # of attendees at Leadership and Management trainings Capture needs and satisfaction survey data</p>	<p># of providers in Librarian role in DLE (per campus) # of students served by librarians in DLE Change in DLE provided information services # of Professional development offerings # of Professional development engagements # of campuses integrated into SUNY consortia instance of Dryad # of Dryad trainings/deposits # of SUNY Dissertations and Thesis aggregation # of student works highlighted in improved portal</p>
<p>High Level Metrics</p>	<p>What does success look like for users, providers, administration?</p> <p>Document OLIS and SLS activities Facilitating campus work in assessment through production of practical tools Highlight best practices on capturing student success metrics and impact studies of library services on campuses Demonstrate how changing Information Literacy Gen Ed Core Competencies shaped student performance</p>		<p>What metrics demonstrate success?</p> <p>OLIS and SLS annual success metrics comparison (increase and decrease) Achievement of Goals (establishing communication channels, CoP, toolkits, etc.) Successful student metrics (grades, time to graduation, D/F/W, enrollment) on campus related to campus library activities</p>	

*additional strategic activities for each goal on page 2

<https://slcny.libguides.com/olis>



OLIS Planning Roadmap

	A	B	C	E	F	G
	Responsibility	Goal Year	Priority	Progress (Red-Green scale)	Notes	
1	OLIS Strategic Plan - link to 2023 Plan					4/28/2023
2	1. Data-Informed Decision Making					
3	A. Develop data-driven strategies to sustain and grow OLIS programs overall and within specific functional areas.					
4	i. Design annual success metrics for existing and new OLIS functional areas.	OLIS	2023	10	Annual Report In Progress	
5	ii. Moved to SOS sheet					
6	iii. Expand collections services to analyze local campus collections, software subscriptions, and budget reviews.	SLS	2024			
7	B. Build Programs to collaboratively share assessment and evaluation best practices					
8	i. Create a community of practice to raise awareness about national trends in library-related, data assessment and analysis.	SLS	2024 Medium	5	Create Assessment Plan	
9	ii. Build consensus across SUNY libraries to identify key data points for analysis and assessment.	SLS	2024 Medium			
10	iii. Develop best practices for data-gathering related to library services.	SLS	2024 Medium			
11	iv. Gather strategic planning documents, mission statements, and vision statements from libraries across SUNY.	SLS	2024 Medium			
12	v. Leverage data from existing LSP and other readily available sources.	SLS	2024 Medium			
13	vi. Create assessment and evaluation best-practices toolkit(s) and repository.	SLS	2024 Medium			
14	vii. Construct library support templates for accreditation reviews	SLS	2024 Medium			
15	C. Create and enhance practical data-gathering tools and offerings	SLS, SOS				
16	i. Moved to SOS sheet	SLS, SOS				
17	ii. Moved to SOS sheet	SLS, SOS				
18	2. Partner in Navigating Complex Change					
19	A. Identify key areas for service transformation within libraries and create scaffolding to support these transformations.	OLIS				
20	i. Highlight and share best practices that demonstrate how libraries contribute to student success.	OLIS	Ongoing High	5	1. Request or develop student success outcome examples	
21	ii. Partner with the Office of Research Innovation and Economic Development (ORIED) to support and fund research activities across campuses.	OLIS	2023 High	25	1. Participate in pilots and ORIED activities 2. Support ORCID integration projects as possible 3. Integrate ORCID awareness into OLIS/SLS projects	
22	iii. Develop consulting and support services for libraries facing resource constraints or navigating major organizational changes.	SLS	Ongoing/High	15	1. Review outcomes and develop services that align with needs 2. Provide services 3. Assess services and revise as needed 4. Continue open communication channels with library directors	Currently working with Cayuga!
23	iv. Define areas of strength and areas to improve across library systems.	SLS	2024/Ong Medium			
24	B. Moved to SOS sheet	SOS				
25	C. Collaboratively grow new and established library-related services to maximize efficiencies of scale.					
26	i. Analyze cataloging needs, staffing levels, and staffing plans for cataloging and metadata management at campuses.	SLS	2023 High	5	1. Form cataloging team within SLS to assess needs across SUNY. 2. Implement / grow cataloging services based on needs assessment.	
27	ii. Identify functional areas within student support services that may benefit from greater system-wide collaboration such as reference and information literacy.	OLIS	2023 High	5	1. Repository for Info Lit documentation/practices 2. Partner with SILC to market best practices 3. Curate examples of campus Info Lit best practices	
28	iii. Create new programs to broaden OLIS support offerings across non-traditional areas such as instruction and reference.	OLIS	ongoing			
29	iv. Grow portfolio of shared collections agreements and programs for all-SUNY content	SLS	2024			
	v. Refine programs for campus relationship management, regardless of support agreement					



OLIS by the Numbers

1 million +
SDR/SOAR downloads in
22/23

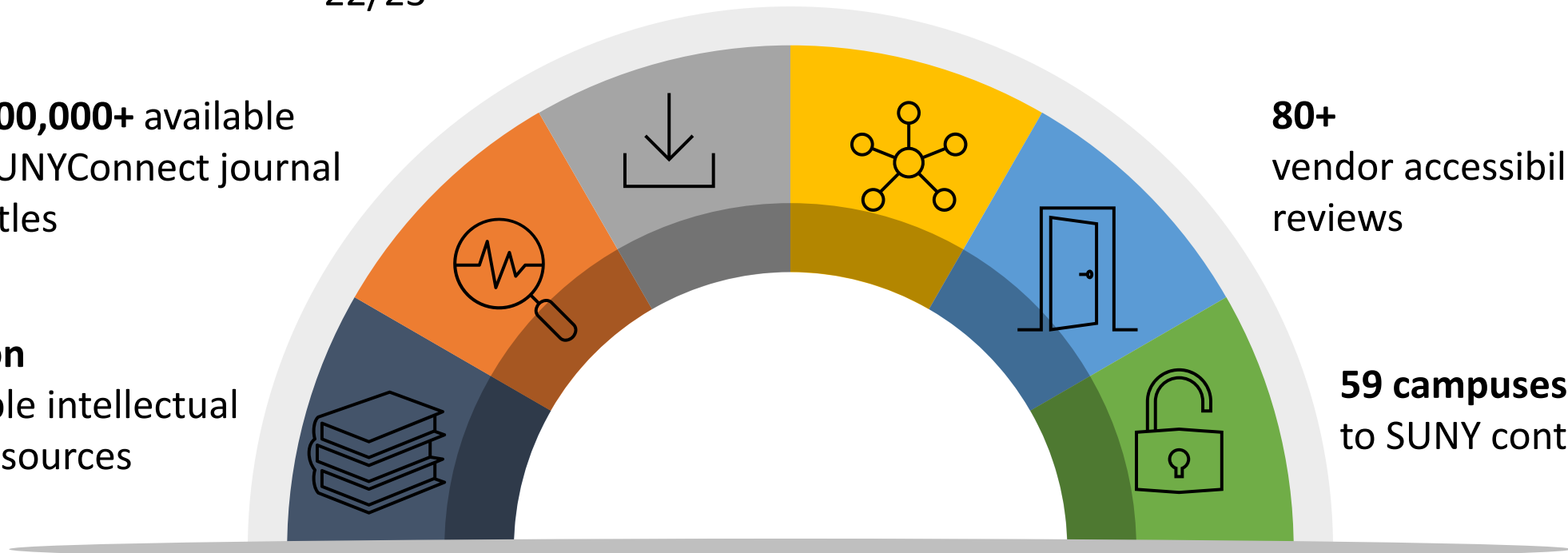
20,000 books & 2,500 ILL
articles shared in 22/23

200,000+ available
SUNYConnect journal
titles

80+
vendor accessibility
reviews

5 million
accessible intellectual
print resources

59 campuses opting-in
to SUNY contracts





SUNY Library Services: Campus Savings



+



+



=



\$1.3 million (systems
and resource sharing)

\$5.95 million
(collections)

\$430,000 (support)

\$7.7 million in savings



Communications Updates & Reminders

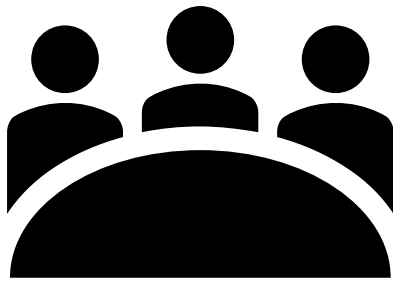
- SUNY library listserv general updates
- Basecamp (Alma / LSP)
- Website and Blog general updates
- Quarterly OLIS updates (scheduled through December)
- Annual report



<https://slcnyc.libguides.com/sls/communication>



Communities of Practice Updates



- **Library Leaders CoP** (*SUNY Library Directors meeting*)
 - June 1
- **Scholarly Communications CoP**
 - May 18 from 10:00 am – 11:00 am
 - ORCID Connections and Implementation at SUNY
- **OER Leads**
 - Fall meeting dates set
 - First meeting September 14



FACT2

Leveraging the DLE Task Group

- Goal to foster sharing within the Learning Object Repository (LOR) of Brightspace Digital Learning Environment
- Led by Katie Ghidiu (Monroe CC) and John Kane (Oswego)
- OLIS participation
 - Connecting SOAR, SDR, and OER initiatives with LOR potential
 - Providing guidance on metadata and submission processes

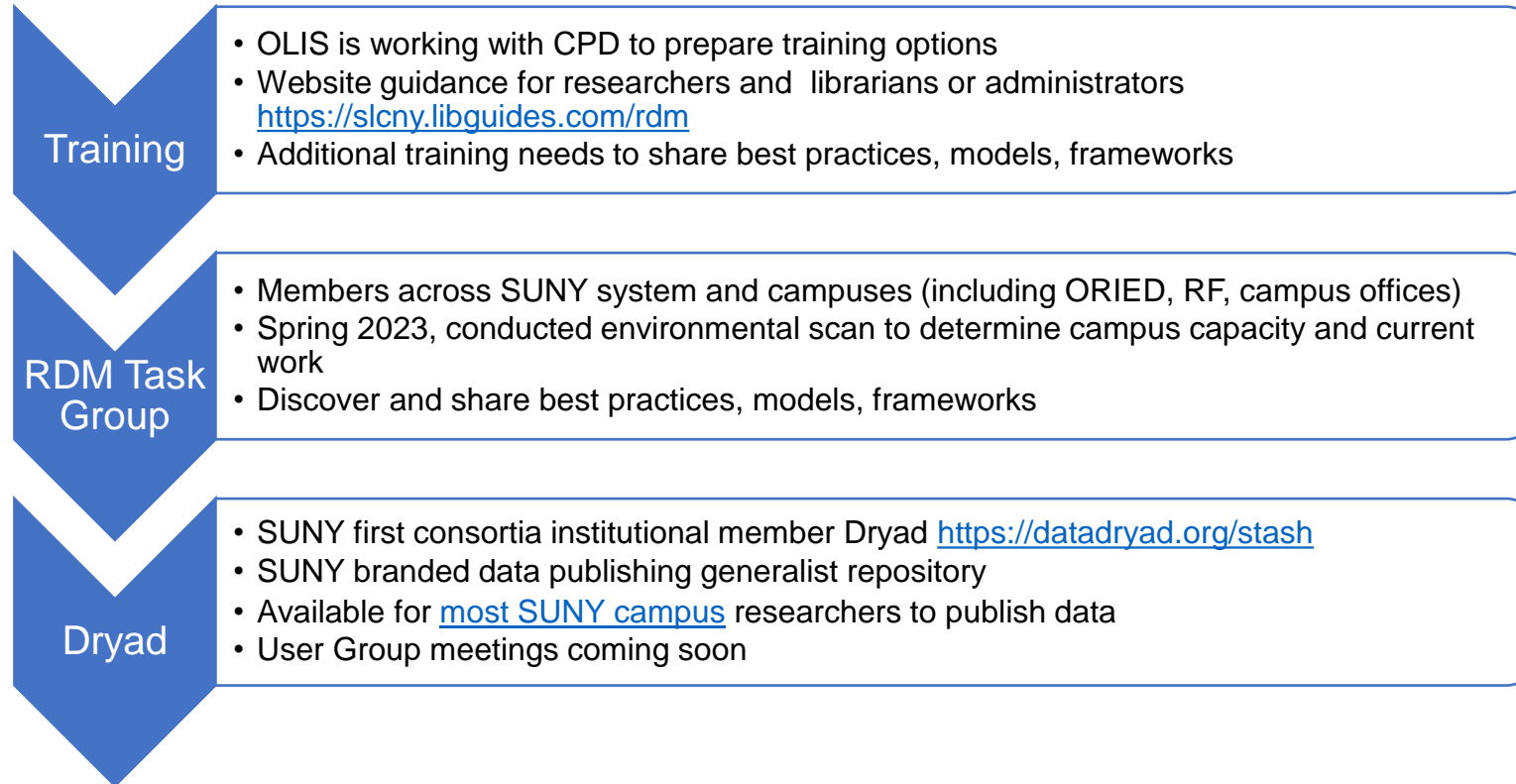




Research Data Management Activities within OLIS



Research Data Management





Explore data | Search

Who we are | What we do | Join us | Help | Datasets | Logout

Describe dataset Upload files Review and submit

Describe your dataset

Preliminary information

My data is related to:

- a manuscript in progress a published article other or not applicable



Explore data | Search

Who we are | What we do | Join us | Help | Datasets | Logout

Journal name Manuscript number APPS-D-17-00113 Import Manuscript Metadata

Dataset: Basic information

Dataset title

Author(s) Catherine Stollar Peters State University of New York

To configure access to Dryad for your campus researchers please send a ticket to: slcny@info.libanswers.com

Data from: Bats, primates, and the evolutionary origins and diversification of mammalian gammaherpesviruses

Escalera-Zamudio, Marina, Leibniz Institute for Zoo and Wildlife Research
Rojas-Anaya, Edith, Centro Nacional de Investigación Disciplinaria en Microbiología Animal—INIFAP, Mexico City, Mexico
Kolokotronis, Sergios-Orestis, SUNY Downstate Medical Center
Taboada, Blanca, National Autonomous University of Mexico
Loza-Rubio, Elizabeth, Centro Nacional de Investigación Disciplinaria en Microbiología Animal—INIFAP, Mexico City, Mexico
Méndez-Ojeda, María L., Universidad Veracruzana, Freie Universität Berlin
Arias, Carlos F., National Autonomous University of Mexico
Osterrieder, Nikolaus, Universidad Veracruzana, Freie Universität Berlin
Greenwood, Alex D., Leibniz Institute for Zoo and Wildlife Research
Publication date: October 20, 2017
Publisher: Dryad
https://doi.org/10.5061/dryad.sg0k6

Data files Download dataset October 20, 2017

Related works Article https://doi.org/10.1128/mbio.01425-16

Share social media icons

Metrics 205 views 16 downloads 1 citations

Citation Escalera-Zamudio, Marina et al. (2017), Data from: Bats, primates, and the evolutionary origins and diversification of mammalian gammaherpesviruses, Dryad, Dataset, https://doi.org/10.5061/dryad.sg0k6

Abstract



ORCID

- **ORCID Task Force (SUNY System)**
- **Summer SUNY ORIED and RF researcher ORCID workshops** for Doctorals and Comprehensives
 - NSPM-33 persistent identifier recommendations likely becoming required in future years
 - SUNY coordinated large scale grants depend on accurate researcher data
 - ORCID is one way to harness connections between grant applications and publication records



OER Services, Professional Development, and Engagement Updates



SUNY OER Impact Grants Program

Grants awarded to support advancement of OER across the system

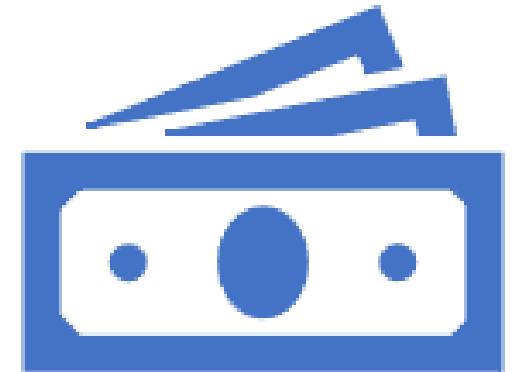
54 grant proposals received from 29 campuses

Examples of projects:

- Large-scale adoptions of OER for high-enrollment courses
- OER creation (i.e., textbooks, adaptive courses, and ancillary materials)
- Professional development supporting OER and open pedagogy

Grants will be announced May 30, 2023

More information: oer.suny.edu/2023grants





Partnership Grants

DIGITAL PROMISE



- With Gates Foundation
- Focus on making Statistics courseware more inclusive and equitable

GENERAL, ORGANIC AND BIOCHEM



- With Carnegie Mellon's OLI
- Brings together a community of GOB faculty via a fellows program to develop GOB materials and refine their use in the classroom

COMMUNITY-ENGAGED COURSEWARE FOR STEM SUCCESS (CCSS)

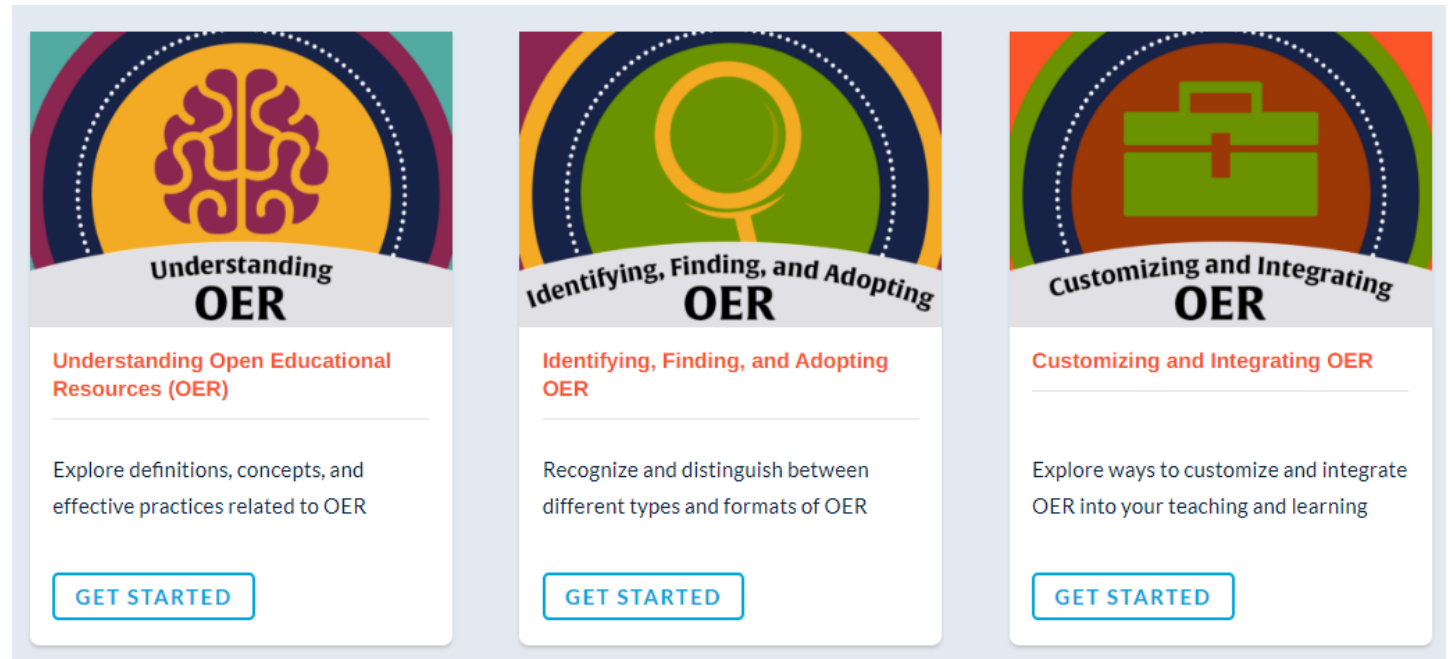


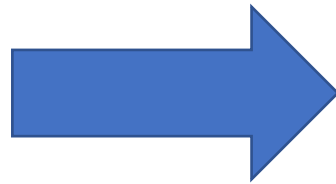
- With Carnegie Mellon's OLI
- Use data-driven results to improve outcomes for STEM learners at community colleges
- Emphasis on traditionally underserved students



SUNY OER Training Courses

- Understanding Open Educational Resources (OER)
- Identifying, Finding, and Adopting OER
- Customizing and Integrating OER
- Creating, Licensing and Publishing OER
- Sharing and Promoting OER on Your Campus
- Open Pedagogy Master Class





1

Join a virtual community

connect with peers

2

Explore effective teaching practices

build on strengths and try new ideas

3

Reflect & share

purposeful thinking and feedback about teaching

4

Deepen impact

improve teaching to help all students succeed



Faculty Participation: 2020-2023

800 faculty from 58 institutions

Circle Theme	Total Faculty
Active Learning	205
Belonging & Inclusive Teaching	199
Evidence based Teaching	94
Online Teaching Foundation	73
Teaching with OER & OEP	144
Success Accelerator: Waymaker	19
Success Accelerator: OHM	30
Course Design for Student Success	36
Total Completing Programs	800

Institution	Participants	Institution	Participants
Adirondack	16	Jamestown	7
Albany	21	Jefferson	1
Alfred	11	Maritime	3
Binghamton	21	Mohawk Valley	9
Brockport	22	Monroe	20
Broome	4	Morrisville	13
Buffalo State	28	Nassau	38
Canton	8	New Paltz	14
Cayuga	7	Niagara	6
Clinton	1	North Country	6
Cobleskill	4	Old Westbury	22
Columbia-Greene	1	Oneonta	19
Corning	6	Onondaga	6
Cortland	12	Orange	16
Delhi	19	Oswego	18
Downstate	7	Plattsburgh	7
Dutchess	11	Poly	24
Empire State	36	Potsdam	6
ESF	3	Purchase	3
Erie	13	Rockland	87
Farmingdale	8	Schenectady	11
FIT	16	Stony Brook	18
Finger Lakes	4	Suffolk	23
Fredonia	13	Sullivan	7
Fulton-Montgomery	3	Tompkins Cortland	10
Genesee	8	Ulster	3
Geneseo	13	University at Buffalo	39
Herkimer	3	Upstate	3
Hudson Valley	21	Westchester	24



Library Professional Development Needs Survey

<https://www.surveymonkey.com/r/OLIS-PD>

- Intended for all SUNY library directors, librarians, and professional staff
- Please complete by **May 26, 2023**





Library Leadership & Management Certificate Program

(numbers as of 5/12, last course still being added)

- **31** participants
- **67** successfully completed courses
- **11** participants earned the Library Leadership and Management Certificate *(successfully completed 3 courses)*
- Plans to run the courses again for 2023-24 academic year



SLS Updates



Empire Library Delivery Update

- ESLN sent final pricing to library directors on April 27
 - 5 day service: \$8,160 per year
 - 4 day service: \$6,740 per year
 - 3 day service: \$5,320 per year
 - 2 day service: \$3,900 per year
- Membership agreements also sent to library directors on April 27
 - Signed membership agreements due **Friday, May 19**
- SLS and ESLN have made a billing arrangement for campuses with September-August fiscal year
 - Details about September-August FY campuses sent via email on May 12



Empire Library Delivery Update

- Majority of SUNY libraries are reducing ELD service
 - 5 day service – 14 campuses
 - 4 day service – 5 campuses
 - 3 day service – 23 campuses
 - 2 day service – 8 campuses
 - 4 campuses receiving ELD service via RRLC, 2 campuses receiving service via Syracuse University, and 4 campuses dropped the service
- SLS working with ASRS working group and Shared Courier Task Force on reconfiguring resource sharing rotas
 - Next meeting is May 16
 - Plan to implement new rotas in late May or early June
 - Will evaluate new rotas in mid-August and modify them if necessary



Resource Sharing Update

- SLS has been working with ConnectNY on an Alma resource sharing partnership
 - Canisius College was added to our rotas in September
 - Plan to add Vassar and West Point to our rotas in late May or early June
 - Plan to add Siena College and Marist College later this summer
- SLS also working to expand our resource sharing partnership with St. John Fisher University
- Nazareth College is dropping ELD, so campuses will be given opportunity to remove them from their rotas



Collections

- OGS contracts
 - New vendors, Sage & Wiley
 - <https://online.ogs.ny.gov/purchase/spg/awards/2007023260CAN.HTM>
- Additional OGS review for the following:
 - \$200,000+ for OGS invoices
 - \$75,000+ for SUNY Contracts
- Ebook Task Group
 - Revising timeline
 - Procurement questions
 - Continue to review models and vendors on OGS



Collections

- Artstor contract still in legal negotiations
- JSTOR new fee model – we are working with our procurement team to amend our current contract so that we can pay via the recharge for the new fee model
- Future JSTOR/Artstor contract





Ex Libris / ELUNA updates

- Low number of tickets with ExLibris
- Support meeting, May 17th
- David Schuster voted onto ELUNA steering committee
- Michelle Eichelberger & Nancy Babb on Primo VE Working Group
- ELUNA Conference May 10-12, Congrats to our SUNY Presenters





OCLC Updates

- Small Library and WorldCat Visibility subscriptions.
 - Reach out to Andy Bush at busha@oclc.org
 - SUNY contract # CM03799
- EZProxy reduced price for hosted services– no implementation fees.
 - Reach out to Scott Hojnacki: hojnacks@oclc.org
- Retiring Cat Express April 2024. We'll work with those schools who have subscription





Open Athens

- Open Athens SSO authentication system
- EBSCO implementation
- 20% discount if five SUNY schools subscribe
- Sign-up extended to June 1 – PIA process
- Reach out to Nancy Grimaldi or Kristi McElroy
 - Ngrimaldi@ebSCO.com
 - KMcElroy@ebSCO.com



EBSCO



Conferences & Updates

- CIT – Conference on Instruction and Technology at SUNY Oswego
 - May 23 – May 26
- SUNYLA at SUNY Maritime
 - June 14 – June 16
- Welcome Marcy Strong – our new Metadata Coordinator and Support Specialist



Contact us:

Olis@suny.edu

slcny@info.libanswers.com

<https://oer.suny.edu>

<https://slcny.libguides.com/olis>