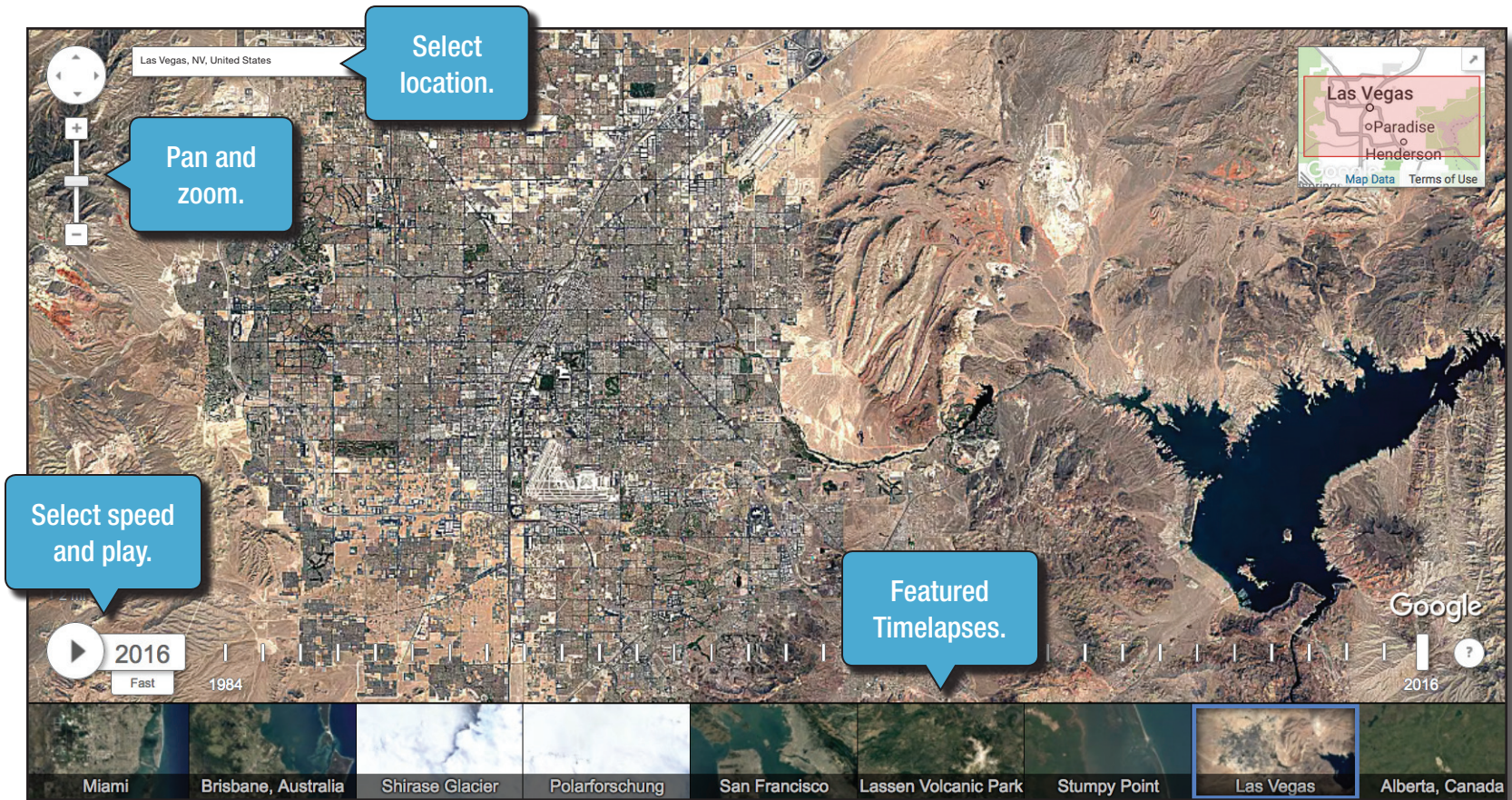


Google Earth Engine: Timelapses

<https://earthengine.google.com/timelapse>

Global, zoomable video that lets you see how the Earth has changed over 32 years (1984–2016). The majority of the images come from Landsat, a joint USGS/NASA program.



Explore changing landscapes: Find an area of interest and play the Google Timelapse video (*note that you can pause and slow down the video*).

- Describe patterns and colors that you observe.
- How has an area changed? Remained the same?
- What might have caused changes?
- How do you think this area will change or stay the same in the future?
- Did you find an interesting location?

*Click the link under the Timelapse image to: [Share or Embed](#)



You don't have to work for NASA to help explore Earth. Become a GLOBE Observer citizen scientist and support NASA missions.

Learn more at • observer.globe.gov

The Institute for Global Environmental Strategies (IGES) created this infographic under NASA award NNX16AE28A: NASA Earth Science Education Collaborative. Any opinions, findings, and conclusions or recommendations expressed in this material are IGES's and do not necessarily reflect the views of NASA. IMAGE CREDIT: Las Vegas and Lake Mead, Landsat, USGS/NASA.