



---

ADVANCING INTEGRATED HEALTHCARE

# Welcome

*Care Transformation Collaborative of Rhode Island*

*Patricia Flanagan, MD, FAAP, PCMH Kids Co-chair*

*Elizabeth Lange, MD, FAAP, PCMH Kids Co-chair*

**Improving Child Health in RI Meeting | July 11, 2024**

# Agenda

<b>Topic</b> <i>Presenter(s)</i>	<b>Duration</b>
<b>Welcome &amp; Opening Remarks</b> <i>Pat Flanagan, MD, FAAP, PCMH Kids Co-chairs and  Beth Lange, MD, FAAP, PCMH Kids Co-chairs</i>	5 minutes
<b>Asthma Update &amp; Student Health Records – HIPPA and FERPA Guidance</b> <i>Gregory Fox, MD, FAAP</i>	10 minutes
<b>RISE-PC: Reaching Integration and Supporting Excellence in Primary Care</b> <i>Liz Cantor, PhD</i>	30 minutes
<b>Update on Legislative Efforts</b> <i>Debra Hurwitz, Executive Director, CTC-RI</i>	10 minutes
<b>Discussion &amp; Next Steps</b> <i>Pat Flanagan and Beth Lange, PCMH Kids Co-chairs</i>	5 minutes

# Asthma Quality Improvement Project



Gregory Fox, MD, FAAP

- Established relationships, workflows, and communication between pediatric practices and school nurse teachers (SNT)
- Improved [asthma action plan](#)
- Provisioned educational materials and asthma supplies for use by both pediatric practices and SNT for improved management of asthma
- Common awareness of FERPA regulations - [Joint Guidance on the Application of the Family Educational Rights and Privacy Act \(FERPA\) And the Health Insurance Portability and Accountability Act of 1996 \(HIPAA\) To Student Health Records](#)
- Sustainability – pediatric practices and SNT will continue with improvements



---

ADVANCING INTEGRATED HEALTHCARE

## RISE-PC

# Reaching Integration and Supporting Excellence in Primary Care Developed by CTC-RI's IBH team

**Presenter: Liz Cantor, PhD**

*Care Transformation Collaborative of RI*

# RISE-PC

- What is it?
  - ❖ It's a competency framework that establishes expectations for practices to be considered for IBH designation by OHIC; similar but different from NCQA Distinction in IBH
- Our Goal
  - ❖ To balance **fidelity** to an IBH model with **practicality**. The expectations are intended to be **meaningful**, to lead to **better care** and practice, and to feel to practices as **achievable** improvements that are **worth making**

## IBH Competencies – Quick Reference

### A. Organizational and Leadership Support for IBH

### B. Population Health Approach

*B1 BH Screening (adult and pediatric)*

*B2 Health Equity*

### C. Team-Based Care

*C1 Qualified BH Clinician on site*

*C2 Structured communication between the IBHC(s) and the medical team*

*C3 Access to psychiatry and medication management consultation*

### D. Access to Care

*D1 Internal access to BH services*

*D2 Access to external resources and BH services*

### E. Measurement

*E1 Monitoring screening rates*

*E2 Monitoring patient and population health outcomes*

### F. Training in IBH

*F1 New Staff are trained on IBH model*

*F2 The practice provides and supports ongoing staff training relevant to IBH*

*F3 Patients are educated and informed about the IBH model*

**These competencies  
are widely used and  
supported in the  
literature as important  
to IBH success**

# RISE-PC

- All Competencies include
  - A description/rationale
  - Criteria for Not Established, Partially Established, Established
  - Evidence required for each
- Scoring/threshold for “passing” – still being discussed
  - nothing is optional, but some number of Partially Established criteria will be allowed
- Added optional Open Response at the end

Let's look at the [framework document](#)

# Feedback please

- Does this framework seem doable?
- Does it take pediatric/family medicine differences into account?
- Would achieving these competencies lead to a high level IBH program and deliver better care to your patients?
- What are the strengths? Concerns?
- Other comments?





---

ADVANCING INTEGRATED HEALTHCARE

# Task Force on Primary Care Provider Workforce

Legislative Update

Debra Hurwitz, MBA, BSN, RN

CTC-RI Executive Director

*Care Transformation Collaborative of RI*

# Legislative Update

## **S2716/H7902 Clinical Training & Curriculum full funding \$2.7M**

- Establish Office of Primary Care Training at RIDOH
- Funding for Clinical Training Sites
- Standardized Advanced Primary Care Curriculum focused on team-based care

## **S2717/H7903 Primary Care Scholarship**

- \$500,000 funding to increase The Wavemaker Fellowship reserving this amount of money for awards to primary care medical doctors, nurse practitioners and physician assistants.
- Funds are moveable

## **S2867/H8078 Ladders to Licensure \$750,000**

- Funding to create employer/educational partnerships to create career advancement pathways to strengthen and diversify the healthcare workforce



# Discussion and Next Steps

# Nurse Care Manager/Care Coordinator Glearn Training

- Call for applications due July 26, 2024
- Apply here: <https://www.surveymonkey.com/r/ZJ69J6W>
- Accepting up to 25 Nurse Care Managers/Care Coordinators
- Contact *person for questions: Michelle Mooney, MPA, Project Coordinator* [mmooney@ctc-ri.org](mailto:mmooney@ctc-ri.org)

# MomsPRN ECHO®

## Two options for participation

1. Full participation ECHO® (only): Participate in at least six out of eight sessions and be willing to present a case study (includes up to 20 - \$250.00 stipend payments; see registration for details).
2. Flexible participation: Attend individual ECHO® sessions with no commitment to sharing a case (no incentive payment).

Register [here](#) by:  
August 22, 2024

Date	Topic	Speaker
Sept 17, 2024	Understanding the needs of birth people with substance use disorder	Margo Katz
Oct 15, 2024	Trauma informed care (including cultural considerations and implicit bias)	Carrie Griffin, MD
Nov 19, 2024	Behavioral Health Screening conversations and referral to treatment (including cultural considerations)	Wilmaris Sotoramos, LICSW
Dec 17, 2024	Perinatal Anxiety and Obsessive-Compulsive Disorder (OCD)	Zobeida Diaz, MD, MS
Jan 21, 2025	Cannabis- what's the evidence and having the conversation	Mara Coyle, MD
Feb 18, 2025	Engaging with Doulas- Empowering birthing people	Quatia Osorio, BS-HSM, BSBA, SPM
March 18 2025	DCYF	TBD
April 15, 2025	Using Interpreter Services	Libertad Flores, MD

All ECHO sessions are noon-1PM

# PLEASE REGISTER

## PCP Specialist Forum

Registration link:

<https://ctc-ri.zoom.us/meeting/register/tZUqdeCqrT0sGN0bQMf5VdMBLCx9PRh0zI2F#/registration>

### SAVE THE DATE

Friday, September 13th, 2024

#### PCP Specialist Forum

7:30 - 9:00 AM

Virtually on Zoom

#### Improved Patient Care and Lower Costs Through Better Primary Care-Specialist Alignment

Please join our discussion on improving collaboration and communication between primary care and specialty groups across systems of care in Rhode Island.

#### Learn about and Discuss:

- The successful e-consults and e-referrals program covered by most payers
- Efforts to improve PCP-specialist alignment that increase high value visits and reduced costs
- Progress on a state-wide, EHR agnostic e-consult solution

Help make this a meaningful discussion by joining and bring a colleague too!



Co-sponsored by CTC-RI, Lifespan, Care New England/Integra, BCBSRI, UHC, Tufts/Point 32, RIBGH

PLEASE REGISTER

## CTC-RI Annual Conference

Registration link:

<https://lu.ma/CTCRIConference2024>

# “INVESTING IN PRIMARY CARE & HEALTH EQUITY”

Oct 31, 2024  
7:00AM –  
3:30PM EST

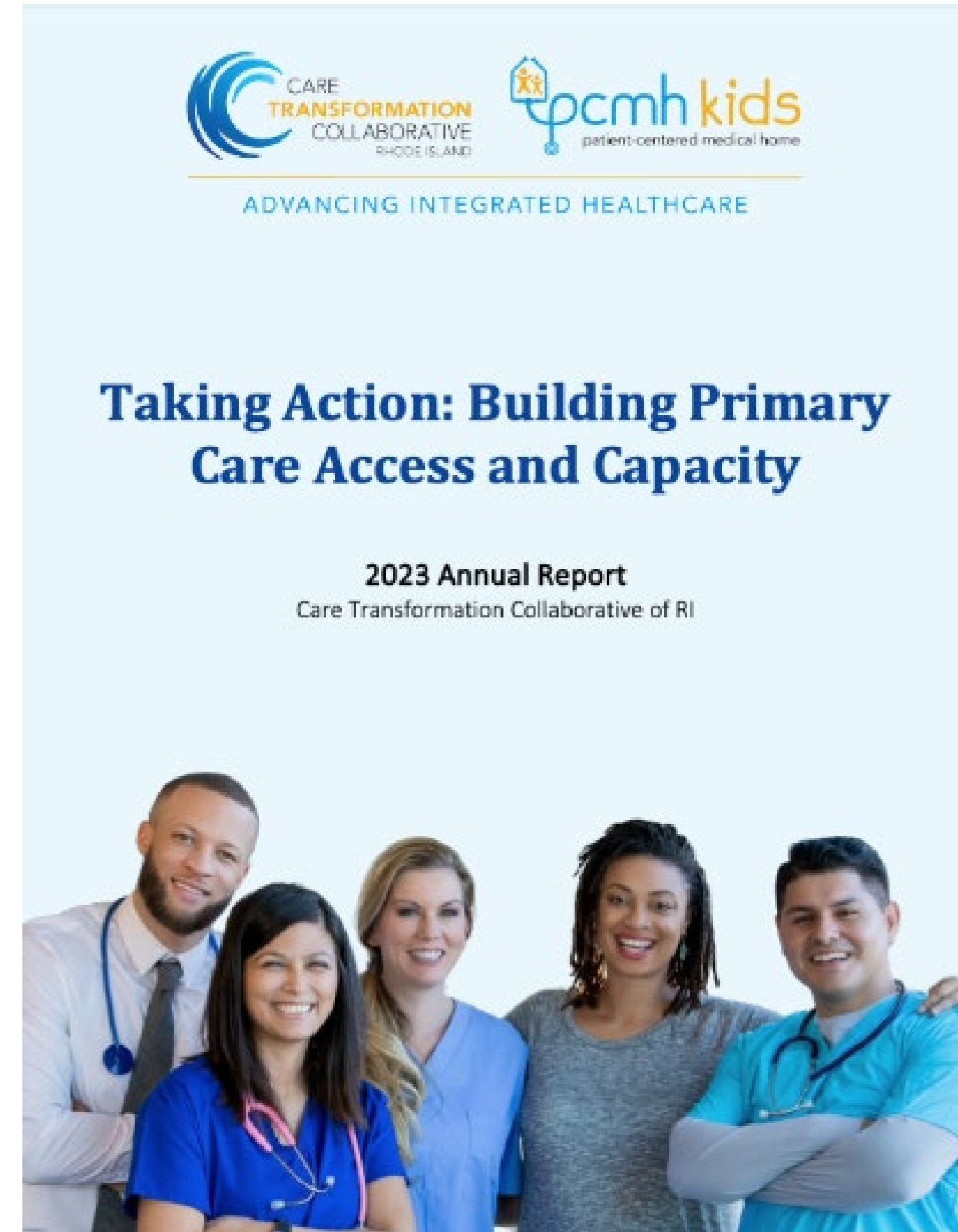
Crowne Plaza

801 Greenwich Ave,  
Warwick, RI 02886

# CTC-RI Annual Report

Report link:

[2023 Annual Report](#)







# Friendly Reminders of Upcoming Meetings...

Date	Meeting
July 16th	Best Practices in Team-Based Care, 8:00-9:00AM, <b>Please register:</b> <a href="https://ctc-ri.zoom.us/meeting/register/tZYvceuuqT8tHtFdfY32d0cQkWEb-h2homMT">https://ctc-ri.zoom.us/meeting/register/tZYvceuuqT8tHtFdfY32d0cQkWEb-h2homMT</a> <i>CME credits available</i>
July 19th	Clinical Strategy Committee Meeting, 7:30-9:00AM <a href="https://ctc-ri.zoom.us/j/81705854618?pwd=R0V5RmtTbEJFL3Faem1UcnlsWTl2Zz09">https://ctc-ri.zoom.us/j/81705854618?pwd=R0V5RmtTbEJFL3Faem1UcnlsWTl2Zz09</a> Meeting ID: 817 0585 4618; Passcode: 646876; One tap mobile: +16468769923,,81705854618# <i>CME credits available</i>
August 1st & September 5th	Virtual Coffee Break with Pat & Beth, 7:30-8:00AM <a href="https://ctc-ri.zoom.us/j/95963024930?pwd=NHMzOGVZdEkzdTQyVk0yZE9CWl80dz09">https://ctc-ri.zoom.us/j/95963024930?pwd=NHMzOGVZdEkzdTQyVk0yZE9CWl80dz09</a> Meeting ID: 959 6302 4930; Passcode: 646876; One tap mobile: 6468769923,,95963024930#,,,,,,0#,,646876#

