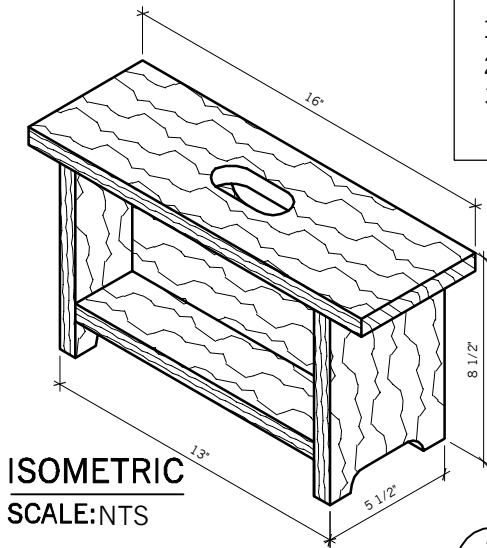


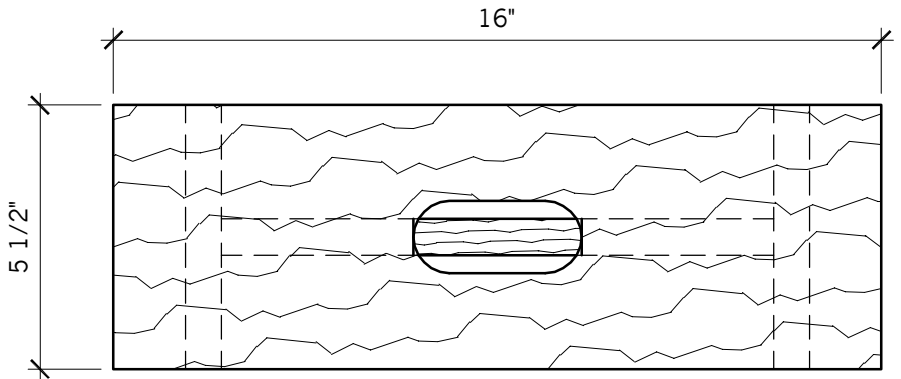
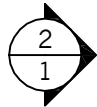
GENERAL INSTRUCTIONS

- 1.) Cut & pre-drill for clearance and pilot holes
 - 2.) Countersink and assemble with glue & 1 3/4" screws
 - 3.) After assembly ease all sharp edges and corners
- ALL DIMENSIONS HAVE A 1/32" ± TOLERANCE

CONTESTANT # _____

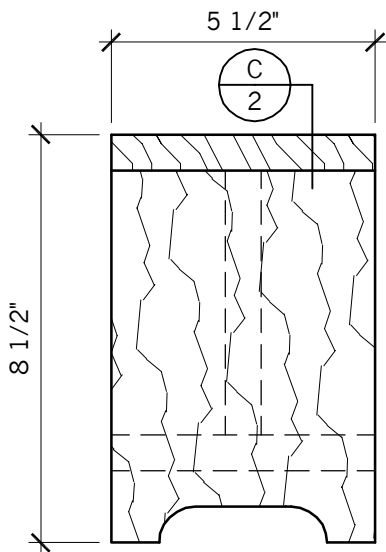


ISOMETRIC
SCALE: NTS



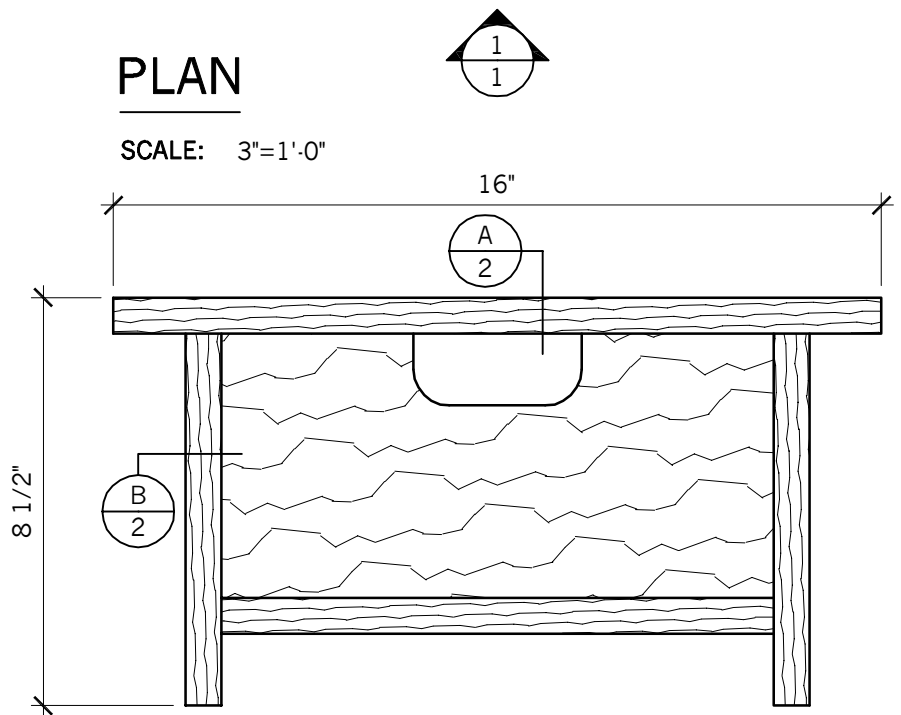
PLAN

SCALE: 3"=1'-0"



2 ELEVATION

SCALE: 3"=1'-0"



1 ELEVATION

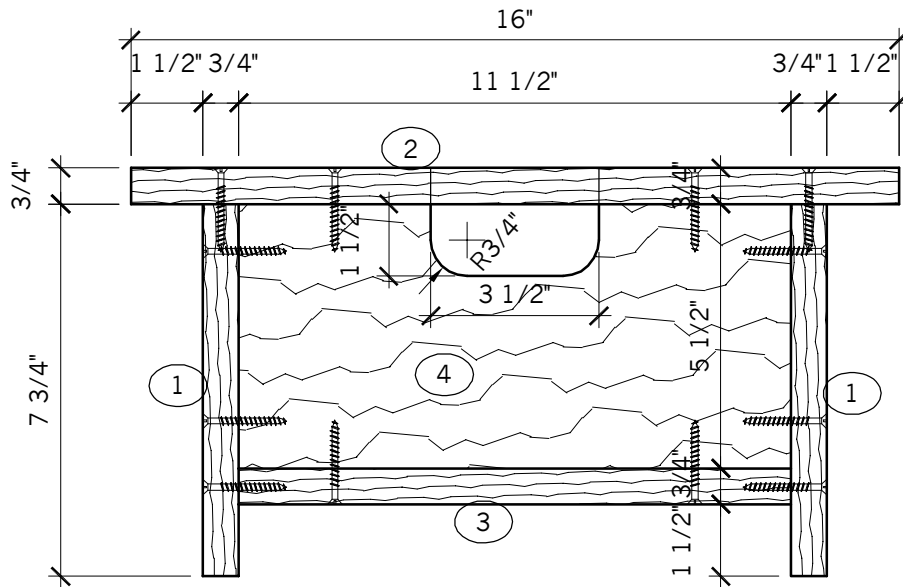
SCALE: 3"=1'-0"



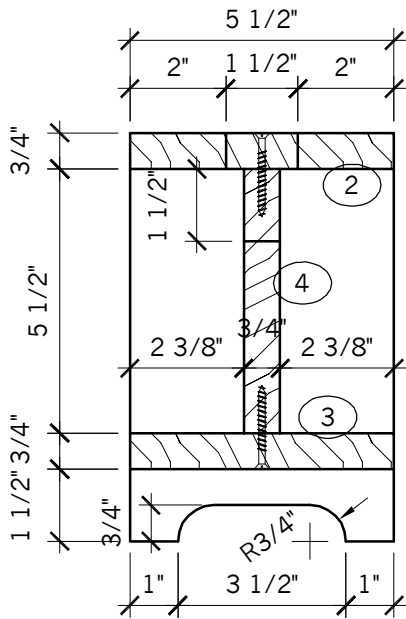
INTRO WOODWORKING
FOOT STOOL
CALIFORNIA REGIONAL

DATE: 2023	JOB #: IW
DRAWN BY: sm	SCALE: 3"=1'-0"
DWG. NO. 1	

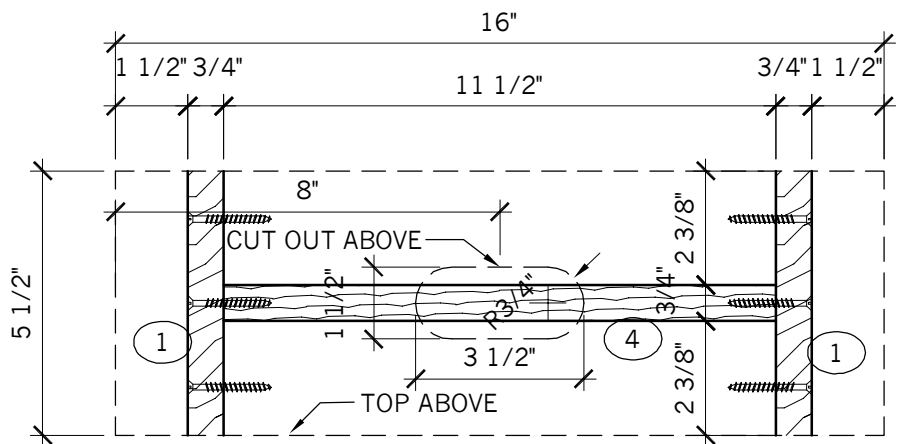
CONTESTANT #



C LONGIT SECTION
SCALE: 1 1/2"=1'-0"



A VERT SECTION
SCALE: 1 1/2"=1'-0"



B PLAN SECTION
SCALE: 1 1/2"=1'-0"



INTRO WOODWORKING
SECTIONS
CALIFORNIA REGIONAL

DATE: 2023	JOB #: IW
DRAWN BY: sm	SCALE: 3"=1'-0"

DWG. NO.
2

BILL OF MATERIALS

#	QTY	DESCRIPTION	MATERIAL	THICKNESS	WIDTH	LENGTH	NOTES
1		Sides	Solid Stock	$\frac{3}{4}$ "	$5 \frac{1}{2}$ "		
2		Top	Solid Stock	$\frac{3}{4}$ "			
3	1	Bottom	Solid Stock		$5 \frac{1}{2}$ "		Groove for back
4		Divider	Solid Stock	$\frac{3}{4}$ "			Drill hole for knob
5							
6							
7							
8							
9							
10							

NOTES:

BILL OF MATERIAL INSTRUCTIONS

In this phase of the competition you will have to look at Sheets 1 & 2.

You will have to calculate some dimensions while others are given.

This portion of the competition is worth 85 of 1000 points.

ALL DIMENSIONS HAVE A $\pm \frac{1}{32}$ " TOLERANCE

12/28/2022

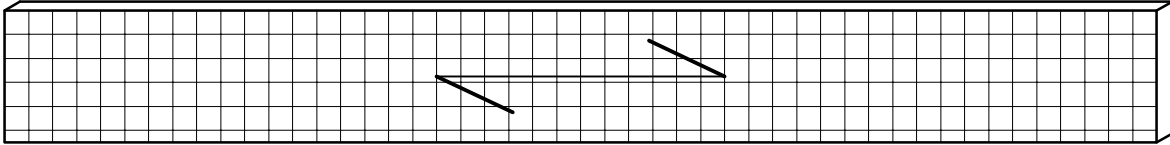
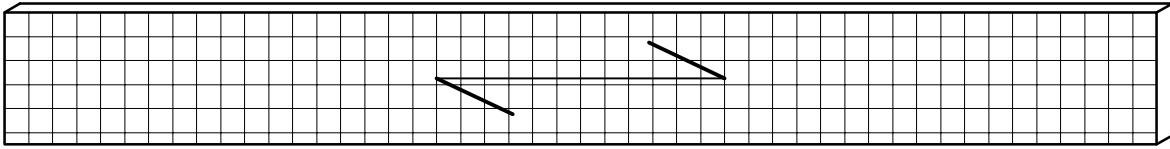


INTRO WOODWORKING

BILL OF MATERIALS CALIFORNIA REGIONAL

DATE: 2023	JOB #: IW
DRAWN BY: sm	SCALE: NTS
DWG. NO. 3	

CONTESTANT #



-YOU WILL RECEIVE ONE PIECE OF SOLID STOCK
1 @ $\frac{3}{4}$ " x $5\frac{1}{2}$ " \pm x 96" \pm (CUT IN HALF)

MATERIAL LAYOUT INSTRUCTIONS

Once you've completed your Bill of Materials, lay out your parts on the corresponding material by drawing a line vertically and/or horizontally to represent the part. Hint: Label your part with Item #, Description or Size; sketch any details the part may have. This portion of the competition is worth 150 of 1000 points. Note: Each square is scaled to 1" Squared.



INTRO WOODWORKING
MATERIAL LAYOUT
CALIFORNIA REGIONAL

DATE:	2023	JOB #:	IW
DRAWN BY:	sm	SCALE:	3"=1'-0"
DWG. NO.	4		