



BURNETT MARY

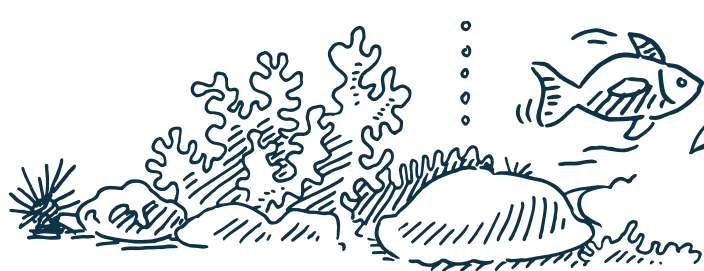
ENHANCED EXTENSION COORDINATION

| Summary



FUNDED THROUGH THE QUEENSLAND GOVERNMENT
REEF WATER QUALITY PROGRAM

ENHANCED EXTENSION COORDINATION IN GBR PROJECT



**THIS PROJECT
SUPPORTS PRODUCERS
TO ACHIEVE REEF 2050 WATER
QUALITY TARGETS**

The **Enhanced Extension Coordination in GBR Project** is operating in six GBR Natural Resource Management regions in Queensland. The Burnett Mary Regional Extension Coordinator is delivering the project in partnership with the cane, grazing, horticulture and grains industries to improve extension services throughout the Burnett Mary Region.

SOME KEY PROJECT OUTCOMES:



- Enhanced communication, coordination and planning
- A Community of Practice to coordinate extension delivery
- A framework to co-design and implement effective collaboration
- Empowering local decision making
- Improving extension officers' skills and capacity
- New ways of working together

BENEFITS...

FOR PRODUCERS:

- ✓ Enhanced delivery of extension services
- ✓ More coordinated and effective support for producers
- ✓ Better access to improved information and highly skilled extension officers
- ✓ Opportunities for Peer to Peer producer groups



Did you know that funds have already supported 13 projects in the Burnett Mary Region relating to cane, grazing, horticulture and grains

FOR EXTENSION STAFF:

- ✓ Connection to regional extension networks
- ✓ Up-to-date information on project work, funding programs and opportunities to collaborate with colleagues
- ✓ Opportunities to be part of decision-making and coordinated program design
- ✓ Access to training and professional development opportunities and specialised expertise

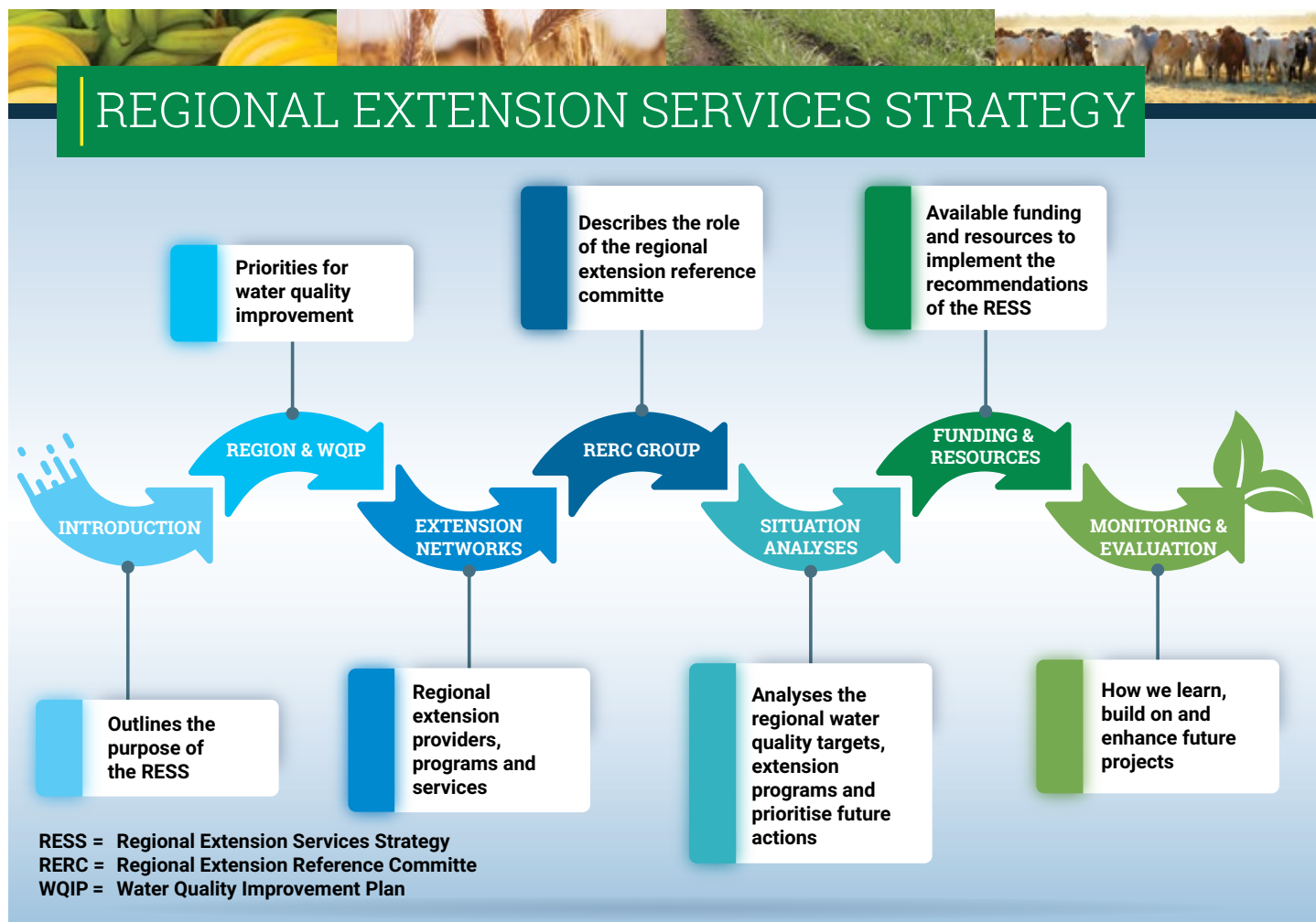


Did you know funds have supported eight workshops for Extension Officers including Soil Health and Behavioural Science in Practice Change

REGIONAL EXTENSION SERVICES STRATEGY

The Burnett Mary Regional Extension Services Strategy (BMRESS) was developed to improve coordination and collaboration in the Burnett Mary extension network and target the delivery of extension advice to the needs of producers in the region.

A collaborative approach across industries will ensure that producers can easily access information, technology and technical support throughout the entire region. This will enable them to make informed decisions around optimal farming practices to improve water quality and profitability.



THE BURNETT MARY CROSS INDUSTRY NETWORK

The Burnett Mary region is very diverse and includes grazing, cane, horticulture and grains industries. Producers throughout the region have access to a wide range of extension providers including industry organisations, private consultants, agri-businesses, NRM organisations and government agencies. The Burnett Mary Cross Industry Networking (CIN) forums provide the platform for a collaborative and coordinated approach to extension in the region

as well as professional development for extension practitioners.

The Regional Extension Coordinator coordinates regular CIN forums throughout the region. They are attended by a range of partner organisations that either provide extension advice or manage water quality projects.

BURNETT MARY REGIONAL EXTENSION REFERENCE COMMITTEE

- Canegrowers Isis
- Department of Agriculture and Fisheries
- Burnett Mary Regional Group
- Burnett Catchment Carer Association
- Burnett Inland Economic Development Organisation
- Sugar Research Australia
- Growcom

PROJECTS FUNDED IN THE BURNETT MARY

All decisions on projects are made through representatives of the Burnett Mary Regional Extension Reference Committee.

PROJECT HIGHLIGHTS SO FAR:

- ✓ Supporting the use of new technology and the analysis of proactive management changes in the cane industry
- ✓ Supporting group extension activities including the Young Farmers Forum; North and South Burnett Ag Networks and Best Practice Grazing and Cropping in the inland Burnett
- ✓ Access and links to innovative practices, ideas and technology from other regions and industries
- ✓ Supporting existing and new Peer to Peer producer groups to build their knowledge and skills



Producers inspecting pecan plantation near Munduberra at a field day hosted by the Central Burnett Landcare Group.

SOIL CONSERVATION TRAINING AND MENTORING

This project targets a significant gap in extensions services highlighted in the BMRESS. It will build the technical expertise and skills of existing extension practitioners through the provision of an intensive three-day Soil Conservation Training Course. The training program will be delivered through a combination of classroom and site-work in soil conservation surveying and planning, and soil conservation design.



To find out more about the Burnett Mary Regional Extension Services Strategy and extension networks, please contact Wendy Thorsborne, the Burnett Mary Regional Extension Coordinator with the Burnett Mary Regional Group at Wondai.
Wendy.Thorsborne@bmr.org.au or phone 0474 879 935.

This program is funded by the Queensland Government Reef Water Quality Program and delivered by the Department of Agriculture and Fisheries with partner organisations: Cape York NRM, Terrain NRM, NQ Dry Tropics, Fitzroy Basin Association and Burnett Mary Regional Group.

