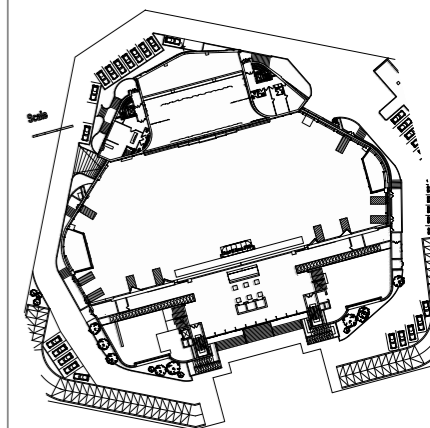




THE AGENDA VENUES MANAGEMENT FZ LLC  
 PO BOX 500820  
 TEL: +971 (0)4 580 9159  
 DISRUPTORS@THEAGENDA.COM  
 THEAGENDA.COM

**KEY PLAN / NOTES**



PLOT #	MAKANI #
A-013-001	15248-77351

**GENERAL NOTES**

- THESE DRAWINGS AND SPECIFICATIONS ONLY INDICATE DESIGN INTENT, THUS DISCLAIMING ANY LIABILITY WITH RESPECT TO ARCHITECTURAL OR ENGINEERING RESPONSIBILITY.
- THESE DRAWINGS ARE THE EXCLUSIVE PROPERTY OF THE AGENDA AND CANNOT BE USED, COPIED OR REPRODUCED, IN WHOLE OR IN PART, WITHOUT WRITTEN PERMISSION.
- THE CONTRACTOR MUST VERIFY ALL DIMENSIONS WHICH APPEAR ON THE PLANS PRIOR TO STARTING WORK.
- THE AGENDA MUST BE ADVISED OF ALL ERRORS, OMISSIONS OR DISCREPANCIES BETWEEN THESE DOCUMENTS AND THOSE OF OTHER PROFESSIONALS.

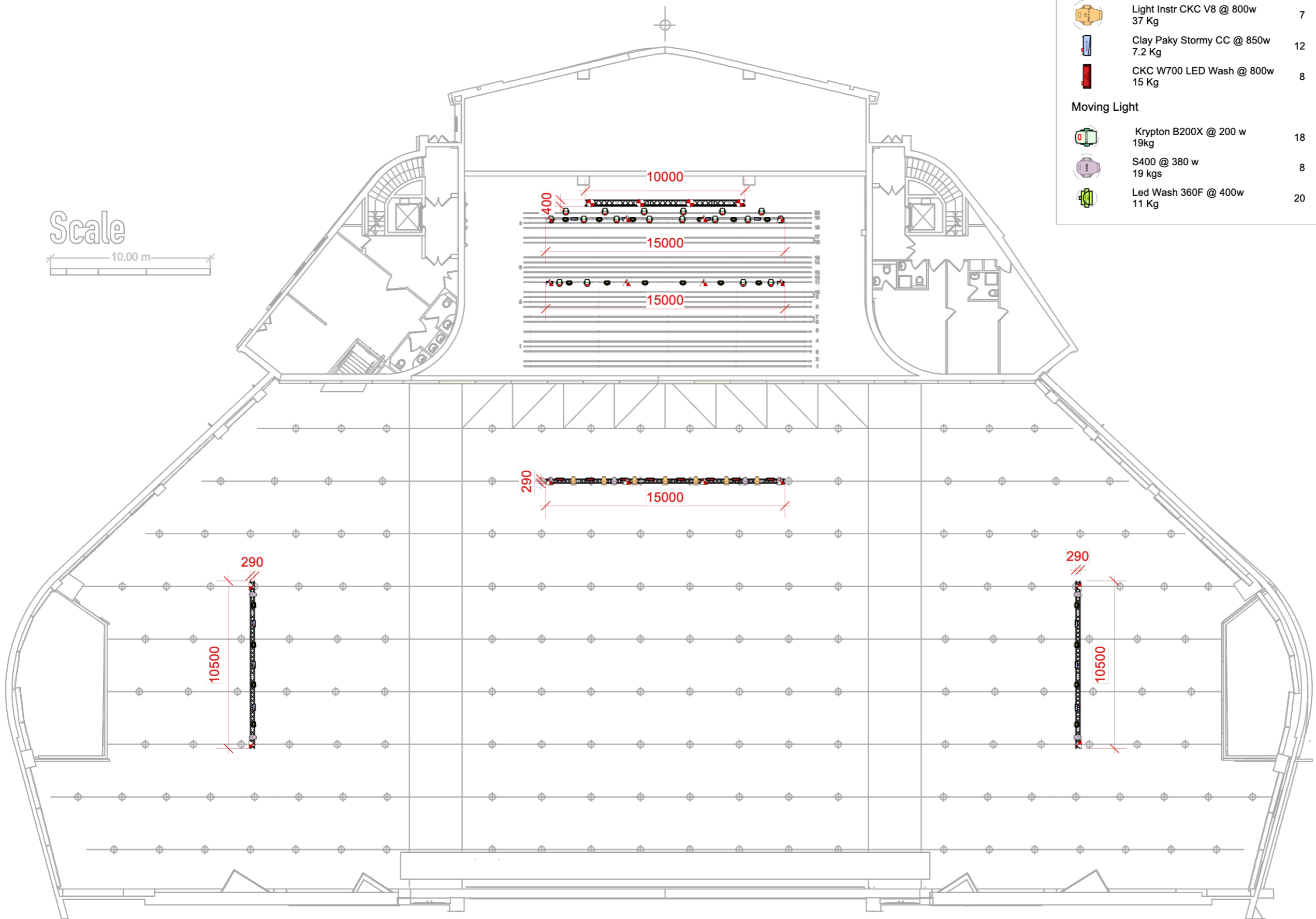
**DRAWING SPECIFIC NOTES**

**TITLE**  
 THE AGENDA  
 Complete Plot Overview

DRAWING #	DRAWN BY	APPROVED BY
DATE	SCALE	REVISION
23/09/2023		1

**LEGENDS**

Light		
	Light Instr CKC V8 @ 800w 37 Kg	7
	Clay Paky Stormy CC @ 850w 7.2 Kg	12
	CKC W700 LED Wash @ 800w 15 Kg	8
Moving Light		
	Krypton B200X @ 200 w 19kg	18
	S400 @ 380 w 19 kgs	8
	Led Wash 360F @ 400w 11 Kg	20

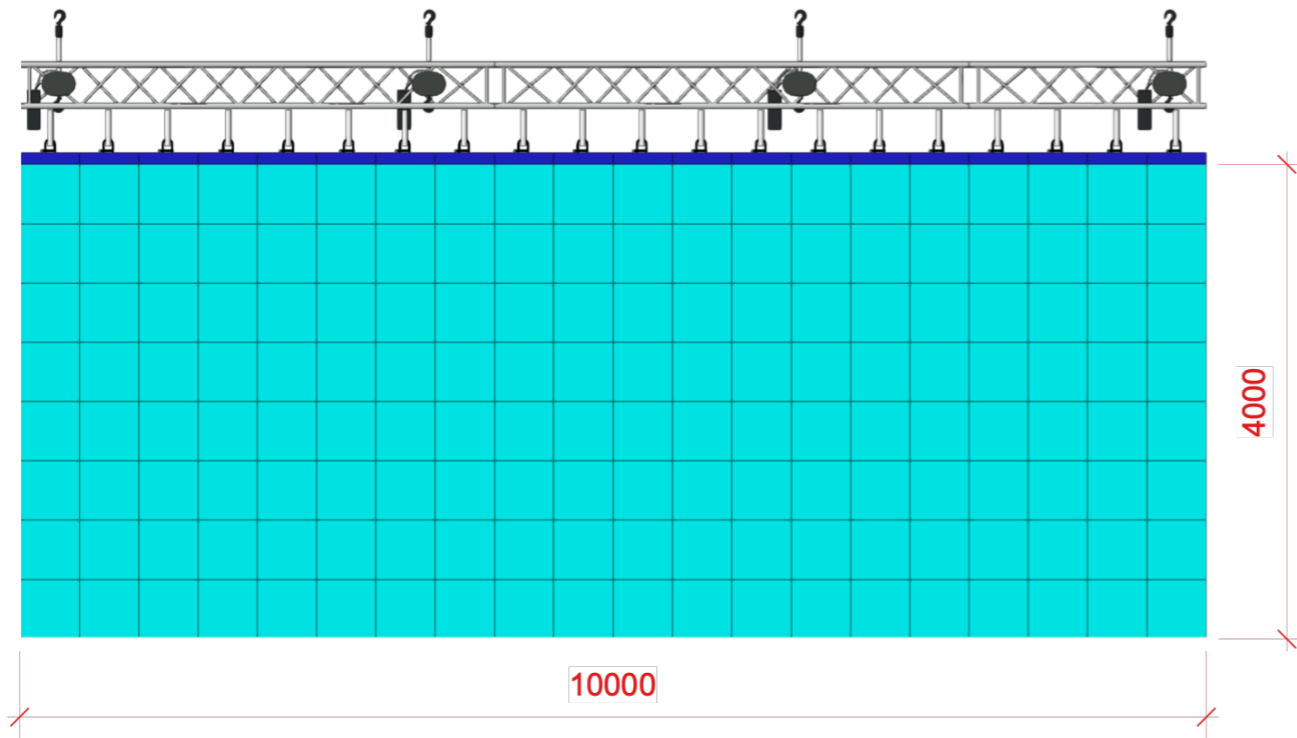
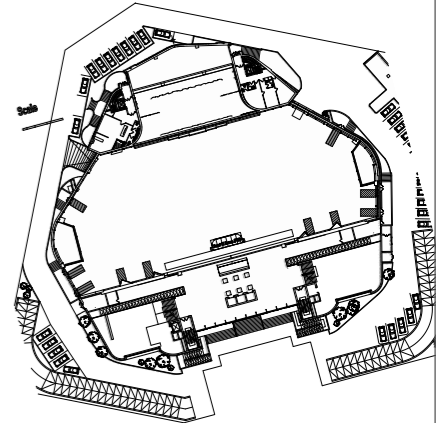


All points to be verified by riggers for accuracy prior to sign-off and build.

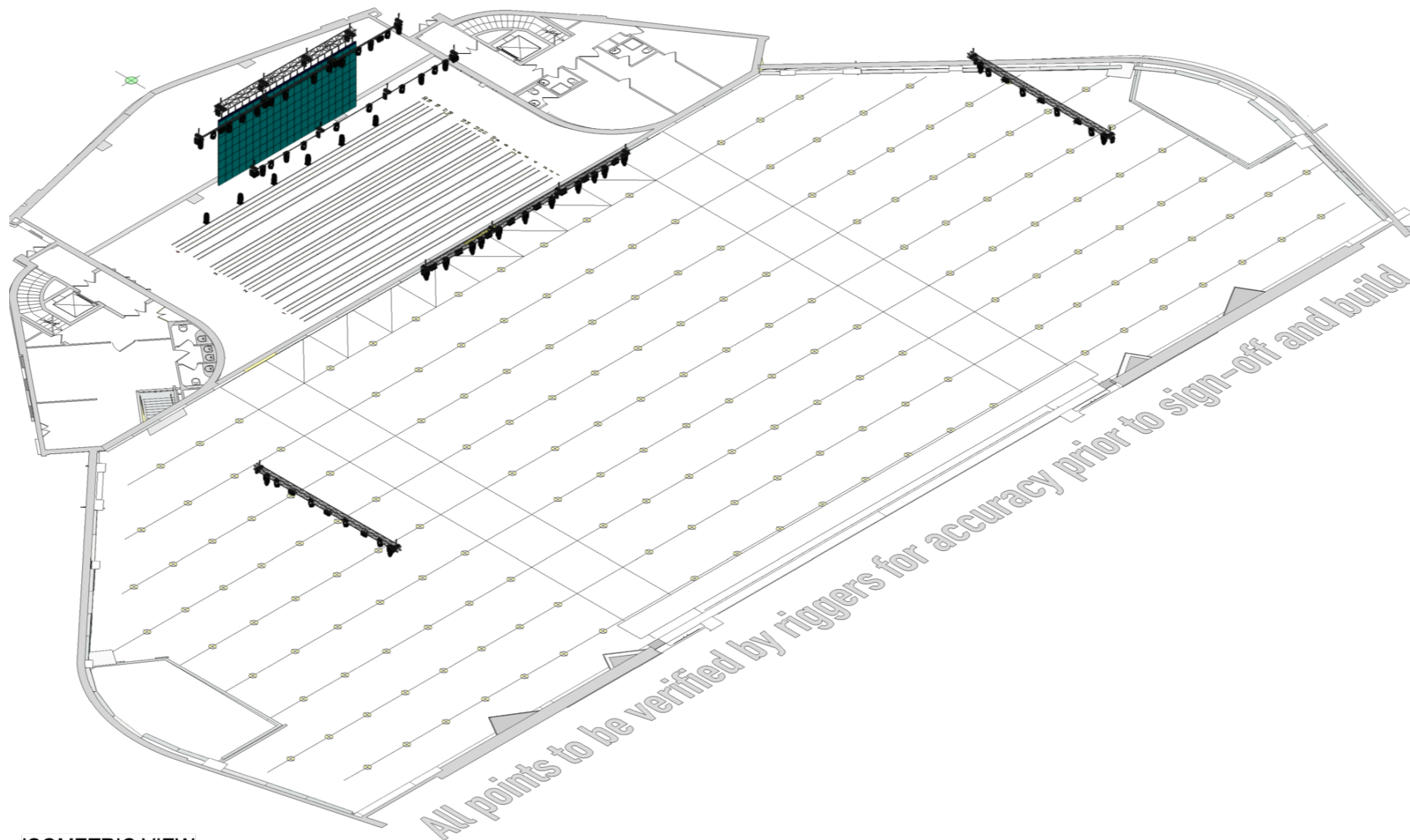


THE AGENDA VENUES MANAGEMENT FZ LLC  
 PO BOX 500820  
 TEL: +971 (0)4 580 9159  
 DISRUPTORS@THEAGENDA.COM  
 THEAGENDA.COM

**KEY PLAN / NOTES**



FRONT VIEW (LED SCREEN)



ISOMETRIC VIEW

*All points to be verified by riggers for accuracy prior to sign-off and build.*

PLOT #	MAKANI #
A-013-001	15248-77351

**GENERAL NOTES**

- THESE DRAWINGS AND SPECIFICATIONS ONLY INDICATE DESIGN INTENT, THUS DISCLAIMING ANY LIABILITY WITH RESPECT TO ARCHITECTURAL OR ENGINEERING RESPONSIBILITY.
- THESE DRAWINGS ARE THE EXCLUSIVE PROPERTY OF THE AGENDA AND CANNOT BE USED, COPIED OR REPRODUCED, IN WHOLE OR IN PART, WITHOUT WRITTEN PERMISSION.
- THE CONTRACTOR MUST VERIFY ALL DIMENSIONS WHICH APPEAR ON THE PLANS PRIOR TO STARTING WORK.
- THE AGENDA MUST BE ADVISED OF ALL ERRORS, OMISSIONS OR DISCREPANCIES BETWEEN THESE DOCUMENTS AND THOSE OF OTHER PROFESSIONALS.

**DRAWING SPECIFIC NOTES**

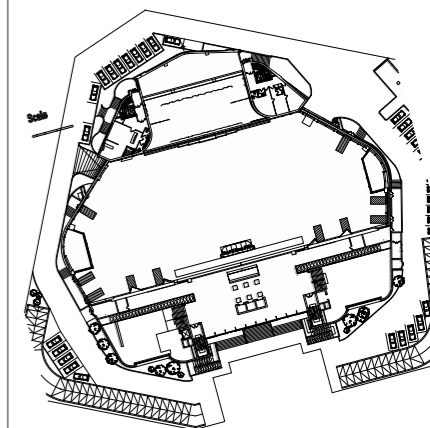
**TITLE**  
 THE AGENDA  
 Video Details

DRAWING #	DRAWN BY	APPROVED BY
DATE	SCALE	REVISION
23/09/2023		1



THE AGENDA VENUES MANAGEMENT FZ LLC  
 PO BOX 500820  
 TEL: +971 (0)4 580 9159  
 DISRUPTORS@THEAGENDA.COM  
 THEAGENDA.COM

KEY PLAN / NOTES



PLOT #	MAKANI #
A-013-001	15248-77351

GENERAL NOTES

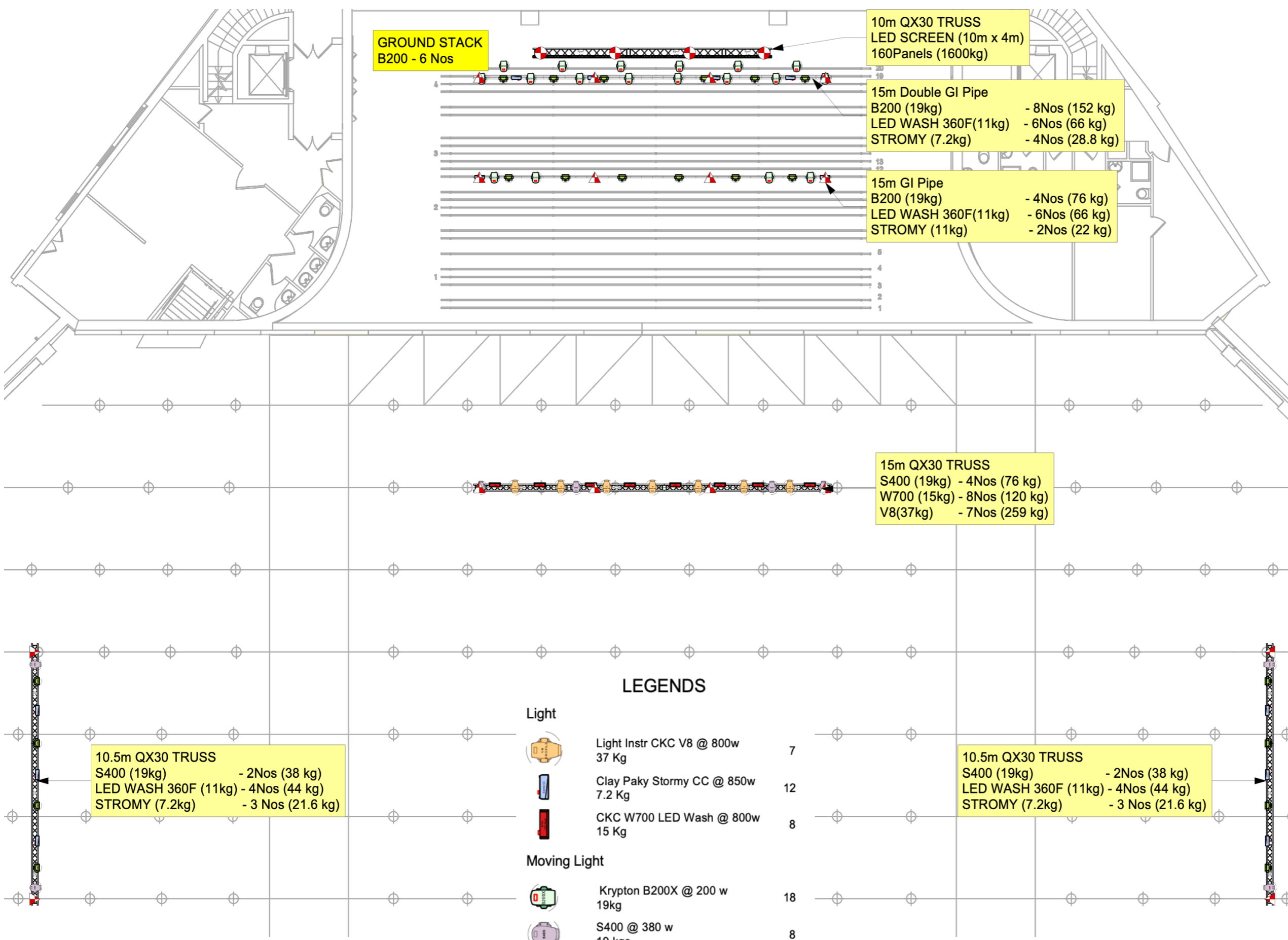
- THESE DRAWINGS AND SPECIFICATIONS ONLY INDICATE DESIGN INTENT, THUS DISCLAIMING ANY LIABILITY WITH RESPECT TO ARCHITECTURAL OR ENGINEERING RESPONSIBILITY.
- THESE DRAWINGS ARE THE EXCLUSIVE PROPERTY OF THE AGENDA AND CANNOT BE USED, COPIED OR REPRODUCED, IN WHOLE OR IN PART, WITHOUT WRITTEN PERMISSION.
- THE CONTRACTOR MUST VERIFY ALL DIMENSIONS WHICH APPEAR ON THE PLANS PRIOR TO STARTING WORK.
- THE AGENDA MUST BE ADVISED OF ALL ERRORS, OMISSIONS OR DISCREPANCIES BETWEEN THESE DOCUMENTS AND THOSE OF OTHER PROFESSIONALS.

DRAWING SPECIFIC NOTES

TITLE

THE AGENDA  
 Lighting & Truss

DRAWING #	DRAWN BY	APPROVED BY
DATE	SCALE	REVISION
23/09/2023		1



LEGENDS

- Light**
- Light Instr CKC V8 @ 800w 37 Kg 7
  - Clay Paky Stormy CC @ 850w 7.2 Kg 12
  - CKC W700 LED Wash @ 800w 15 Kg 8
- Moving Light**
- Krypton B200X @ 200 w 19kg 18
  - S400 @ 380 w 19 kgs 8
  - Led Wash 360F @ 400w 11 Kg 20